

- | | |
|-------------------------------|---------------------------|
| 1-) Steel Cover | 7-) Pressure Relief Valve |
| 2-) Heat-resistant Handle | 8-) Water reservoir |
| 3-) Upper Steel Body | 9-) Power cable |
| 4-) Filter | 10-) Plastic body |
| 5-) leakproof silicone gasket | 11-) On-off switch |
| 6-) coffee container (Funnel) | |

Please read this guide first!

Dear Customer,

We would like to thank you for choosing Beebird Electric Coffee Maker. We aim for our high-quality product to provide you with the best performance. To achieve this, please read this entire guide and the other provided documents carefully before using the product and keep them as a reference. If you pass the product on to someone else, be sure to provide the user manual as well. Please follow the instructions, taking into account all the information and warnings provided in the user manual.

Meaning of Symbols

In various parts of this user manual, the following symbols have been used.



NOTE!

Provides important and helpful information in the user manual.



WARNING: Warnings about dangerous situations related to personal and property safety.



Safe for contact with food.



If you encounter any issues with the device, please contact authorized service centers. Avoid attempting to repair the device on your own. Unauthorized repairs performed on the device by individuals, even if it's within the expiration date, will automatically void the warranty.

IMPORTANT: WHEN USING ELECTRICAL APPLIANCES, ALWAYS ADHERE TO BASIC SAFETY PRECAUTIONS, INCLUDING THE FOLLOWING.

- These instructions are an integral part of the product and should be retained throughout the entire lifespan of the product, and the documents should be provided to subsequent owners of the product.



NOTE!

Read the safety rules and operating instructions as written in the user manual carefully. Keep this user manual for future use.

Warning: This coffee machine requires a heat source to operate and generates pressure. Failure to follow the instructions may result in the risk of burns or the coffee machine exploding.

-Before each use, ensure that the coffee machine is not damaged and that all parts are complete. Additionally, check that the valve, funnel, gasket, and filter plate are intact and properly placed. In case of doubt, contact the seller or manufacturer. Before using, remove all packaging materials and warnings from the coffee machine.

-Do not allow the electric cable to come into contact with the metal parts of the machine while the coffee machine is in operation.

-The power cord of this device should not be replaced by the user; this process requires special tools. In case of damage, contact only an authorized service center appointed by the manufacturer to avoid any risks.

-This device is not intended for use by individuals with limited physical, sensory, or mental abilities, or those lacking experience and knowledge (including children). Keep it out of the reach of children.

-Due to their potential hazard, packaging materials (bags, polystyrene foam, etc.) should not be left where children can access them.

-Do not touch the hot surface of the coffee machine. Surfaces become hot; do not touch hot surfaces while using the device. Use buttons or handles.

-Never use the coffee machine in the heating unit without water.

-The coffee machine is designed to be used only with water and ground coffee. Do not use other products (e.g., barley, cocoa, coffee extracts, tea, etc.).

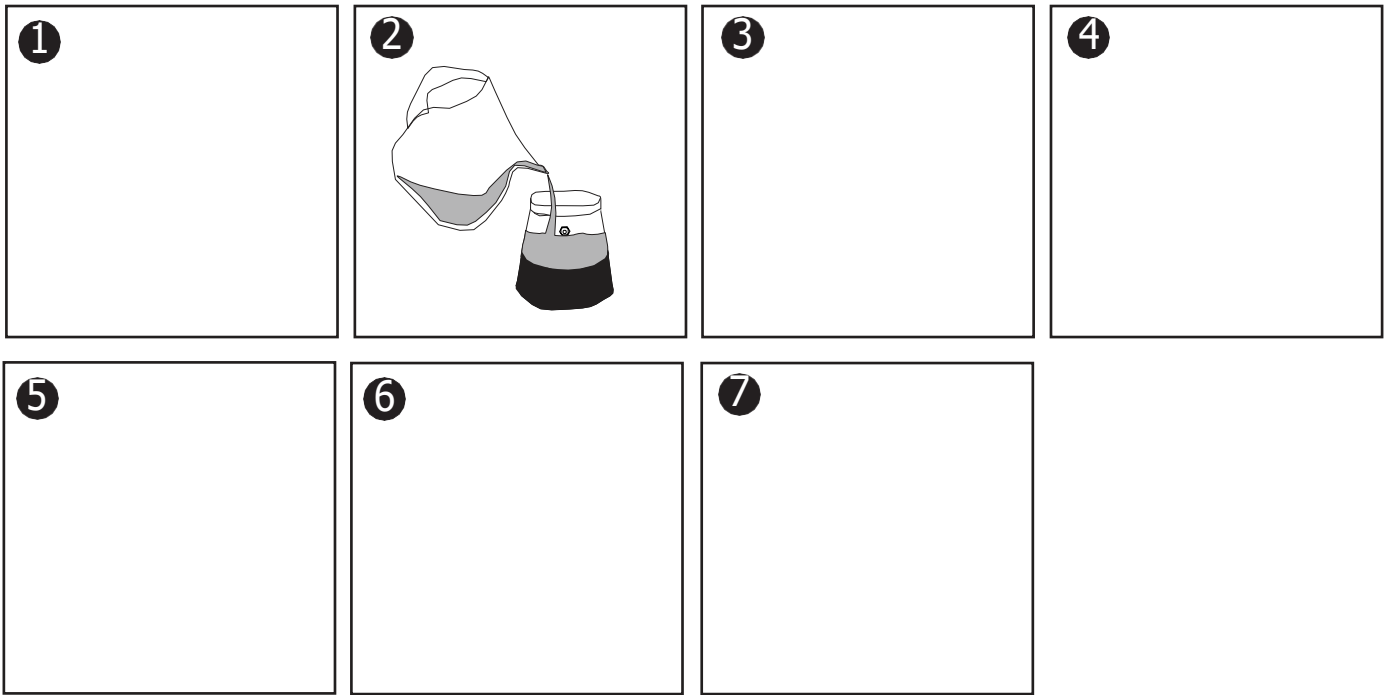
-Make sure that steam is not directed towards the user. Do not use the device for purposes other than its intended use.

-To disconnect the device, set any control to the "off" position and then unplug it from the wall socket.

-Close the lid of the coffee machine during use.

-During cleaning, never immerse the base and the boiler in water; it is an electrical appliance. Do not use the product in case of malfunction, and contact the seller or the manufacturer.

-After use, wait for the coffee machine to cool down before opening it. Choose only original Beebird spare parts that are suitable for the model used.

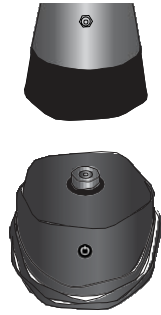
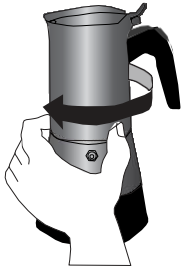
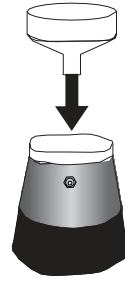
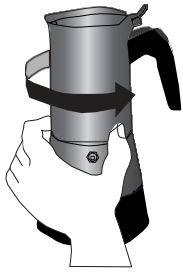


Do not compress ground coffee.



WARNING: Do not use any other liquids in the heater or upper compartment; the coffee machine is designed for use with water only.

- 1-) While holding the boiler with one hand, use your other hand to remove the container by turning it counterclockwise. (Figure 1)
- 2-) Remove the filter, and fill the boiler with clean water until it reaches the safety valve (there is a mark inside the boiler) without exceeding it. (Figure 2)
- 3-) Place the coffee container (Funnel) onto the boiler. (Figure 3)
- 4-) Fill the coffee container (Funnel) with ground coffee. Fill it gradually to avoid spilling ground coffee. (Figure 4)
- 5-) Tighten the coffee machine securely. Hold the boiler with one hand and turn the container clockwise with your other hand. (Figure 5)
- 6-) Place the coffee machine onto the base. (Figure 6)
- 7-) Press the On/Off button. (Figure 7)



CLEANING AND MAINTENANCE

Always unplug the device and wait for it to cool down completely before performing any cleaning and maintenance.

After use, wash with lukewarm water that does not contain detergents or abrasive materials (DO NOT WASH IN A DISHWASHER).

Regularly check that the holes in the filter plate are not clogged. If they are blocked, use a brush or a needle with fine bristles to clear the holes.

Replace the gasket if it is worn. It is recommended to replace it at least once a year.

Periodically inspect the internal components for wear or damage and replace them with original Beebird spare parts suitable for the model used in case of any issues.

TIPS

When using the coffee machine for the first time, thoroughly wash it with water and fill it with water only, without coffee. The best coffee flavor will develop after the first 3 brews.

Ensure that the safety valve is not facing the user.

To maintain its qualities over time, wash by hand without using detergent and abrasive sponges.

Use ground coffee suitable for Moka, and never use finely ground coffee (e.g., Turkish coffee). Never press down on the funnel to compact the coffee. Stir the coffee before pouring it into cups.

Store each part of the coffee machine completely dry and with the lid open. Replace the gasket if it is worn. It is recommended to replace it at least once a year.

Do not tap the funnel to remove the coffee, as it can damage the coffee or deform it, jeopardizing a proper seal.



Welcome back! Please login

A rounded rectangular input field with a thin black border. On the left side, there is a small icon of an envelope. The text 'E-mail address' is displayed inside the field.A rounded rectangular input field with a thin black border. On the left side, there is a small icon of a padlock. On the right side, there is a small icon of an eye with a slash through it, indicating a password field. The text 'Create a password' is displayed inside the field.

[Forgot my password](#)

A solid red rounded rectangular button with the word 'Login' centered in white text.

Don't you have an account? [Create Account](#)

_____ Or _____


A rounded rectangular button with a thin black border. On the left side, there is a small black Apple logo. To its right, the text 'Continue with Apple' is displayed.A rounded rectangular button with a thin black border. On the left side, there is a small multi-colored Google 'G' logo. To its right, the text 'Continue with Google' is displayed.


[Continue as a Guest](#)

My devices



Coffee



Home Pot 



My devices



Profil





How do you want to call you device?
The name you provided fort he device
will be used when communicating
with Alexa or Google assistant the
future.

Maya's Caferesso

Next

Select Wi - Fi Network and enter password.

 SUPERONLINE_WIFI 

 Password 

Back

Next



Let's create your Beebird account

A rounded rectangular input field with a thin black border. On the left side, there is a small grey icon of a person. The text 'Your Name' is centered in the field.A rounded rectangular input field with a thin black border. On the left side, there is a small grey icon of an envelope. The text 'E-mail address' is centered in the field.A rounded rectangular input field with a thin black border. On the left side, there is a small grey icon of a padlock. On the right side, there is a small grey icon of an eye with a slash through it. The text 'Create a password' is centered in the field.A rounded rectangular input field with a thin black border. On the left side, there is a small grey icon of a padlock. On the right side, there is a small grey icon of an eye with a slash through it. The text 'Confirm password' is centered in the field.

I have read and accepted the [Membership Agreement](#) and the [KVKK Information Text](#).

Create Account

Already have an account? [Login](#)

← Moka Pot



Device is connecting



5	37
6	38
7	39
8	40
9	41
10	42
11	43
12	44

Set