

AXIAL, CENTRIFUGAL & MIXED FLOW INLINE FANS



**VENTS-US OFFERS THE MOST
COST-EFFECTIVE AND EFFICIENT SOLUTIONS
FOR INLINE VENTILATION**



DESCRIPTION

The richest product variety for inline ventilation offered by one supplier makes it easy to search and select the required products with respect to each individual project requirements.

The inline fans are designed to provide supply and exhaust ventilation for residential and commercial premises with limited space.



SOLUTION FOR:

- Bathrooms
- Kitchens
- Apartments
- Offices
- Libraries
- Education facilities
- Pools
- Stores
- Bars
- Restaurants
- Public institutions
- Galleries
- Manufacturing facilities
- And more



FEATURES:


- High performance
- Low noise
- Energy efficiency
- Compact size
- Wide variety sizes
- Installation at any angle
- Easy mounting, electric connection and servicing;
- Great variety of fans for ventilation in various premises.


VENTS-US INLINE ROUND DUCT PRODUCTS

TURBO TUBE SERIES

Combine the features and benefits of both axial and centrifugal fans.



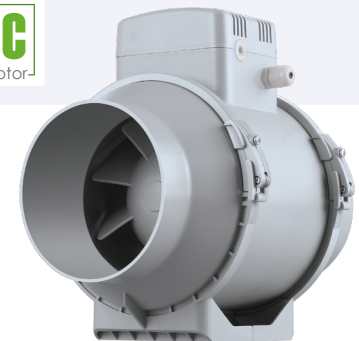
 Air flow capacity: up to **1069** CFM

 Duct compatibility: **4", 5", 6", 8", 10", 12 3/8"**

- Motor: Single-phase asynchronous two-speed motor with thermal protection
- Ideal for premises with high humidity level
- Lightweight, durable and UV resistant plastic case (UL94 certified plastic)

TURBO TUBE EC SERIES

One of the most energy efficient fan series.



 Air flow capacity: up to **745** CFM

 Duct compatibility: **4", 5", 6", 8", 10"**

- Motor: High-efficient electronically commutated direct current motors combined with mixed-flow impellers.
- Ideal for premises with high humidity level
- Lightweight, durable and UV resistant plastic case (UL94 certified plastic)

TURBO TUBE SILENT

New inline mixed flow fans with super low noise level and excellent aerodynamics.



 Air flow capacity: up to **317** CFM

 Duct compatibility: **4", 5", 6"**

- Motor: Single-phase asynchronous two-speed motor with thermal protection
- Ideal for premises with high humidity level
- Lightweight, durable and UV resistant plastic case (UL94 certified plastic)

TURBO TUBE PRO

New inline mixed flow powerful and high pressure fans.



 Air flow capacity: up to **372** CFM

 Duct compatibility: **4", 5", 6"**


- Motor: Single-phase asynchronous two-speed motor with thermal protection
- Ideal for premises with high humidity level
- Lightweight, durable and UV resistant plastic case (UL94 certified plastic)


VENTS-US INLINE ROUND DUCT PRODUCTS

TURBO TUBE SILENT M

New inline mixed flow powerful, high pressure and low noise fans.



 Air flow capacity: up to **1050 CFM**

 Duct compatibility: **4", 5", 6", 8", 10", 12 3/8"**

- Motor: Single-phase asynchronous two-speed motor with thermal protection
- Lightweight, durable and UV resistant plastic case (UL94 certified plastic)

VK SERIES

Inline centrifugal round duct fans.



 Air flow capacity: up to **871 CFM**

 Duct compatibility: **4", 5", 6", 8", 10", 12 3/8"**

- Motor: Quiet external rotor motor with thermal protection
- Ideal for long duct runs
- High quality UV resistant plastic case (UL94 certified plastic).

VK EC SERIES

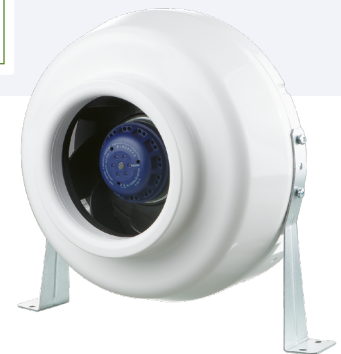
For high static pressure application.



 Air flow capacity: up to **817 CFM**

 Duct compatibility: **4", 5", 6", 8", 10", 12 3/8"**


- Motor: High-efficient electronically commutated direct current motors with backward curved blades
- Ideal for long duct runs
- High quality UV resistant plastic case (UL94 certified plastic).



VKM SERIES

Inline centrifugal round duct fans.

 Air flow capacity: up to **3696 CFM**

 Duct compatibility: **4", 5", 6", 8", 10", 12 3/8", 13 7/8", 15 11/16", 17 5/8"**

- Motor: Energy-efficient single-phase motor with external rotor and thermal protection with automatic restart
- Ideal for long or complex duct runs
- Steel polymer coated case



VENTS-US INLINE ROUND DUCT PRODUCTS

VKM EC SERIES

Inline centrifugal duct fans



- Air flow capacity: up to **801 CFM**
- Duct compatibility: **4", 5", 6", 8", 10", 12 3/8"**

- Motor: High-efficient electronically commutated direct current motors with backward curved blades
- Ideal for long or complex duct runs
- The housing is made of steel with polymer coating.

VKP SERIES

Inline centrifugal round duct fans.



- Air flow capacity: up to **360 CFM**
- Duct compatibility: **4", 5", 6"**

- Motor: Reliable energy efficient motor with thermal protection
- Ideal for under drop ceilings
- The fan's housing is made of steel with zinc phosphate treatment and polymeric coating

VKOM SERIES

Inline axial round duct fans.



- Air flow capacity: up to **262 CFM**
- Duct compatibility: **6", 8"**

- Motor: External rotor motor on ball bearings with thermal protection ensures long life of the fans.
- Fan's body is made of steel with polymeric coating, while the impeller is made of aluminum.

Tel: 1-888-640-0925 sales@ventsus.com
513-583-5786 400 Murray Road,
Fax: 513-268-4597 Cincinnati, OH 45217

