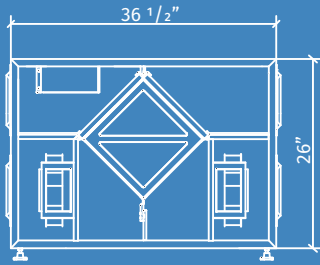


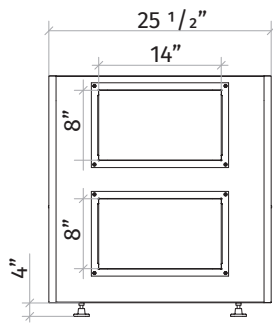
AIRLITE ERV

Energy recovery ventilators for commercial applications

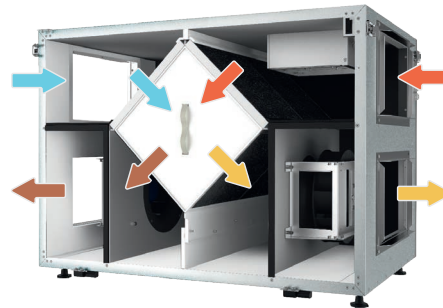


ERV 5
ERV 8
ERV 13
ERV 17
ERV 25

AIRLITE energy recovery ventilators are available in five sizes with one, two or three fans in array on both supply and exhaust sides. Units are specially designed for commercial applications.



ERV 5, ERV 8



CASING

Steel casing is covered with high quality multilayer aluminium and zinc alloy to prevent corrosion. The casing is equipped with a switch to turn the ventilator off when the service panel is opened. Service access from both left and right side. For outdoor installation the roof is necessary (optional).

ENERGY RECOVERY CORE

Unique enthalpy heat exchanger provides high-efficient heat & humidity recovery. No drain pan required.

FANS

The unit is equipped with supply and exhaust centrifugal fans with backward curved blades and built-in thermal overheating protection with automatic restart. The electric motors and impellers are dynamically balanced.

DEFROST SYSTEM

Fan stop defrost system is activated when the outdoor temperature falls below 23° F (-5° C).

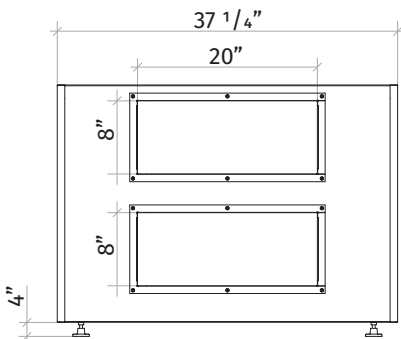
FILTER

Washable MERV 6 air filters in exhaust and supply air streams. Filters MERV 8, MERV 13 optional.

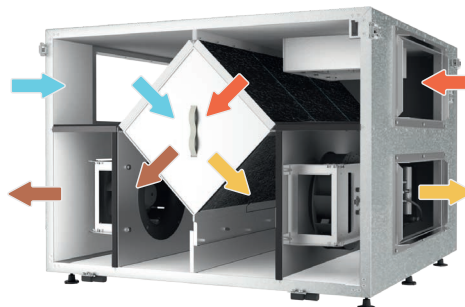
CONTROL

The unit incorporates an integrated automation and control system with following functions:

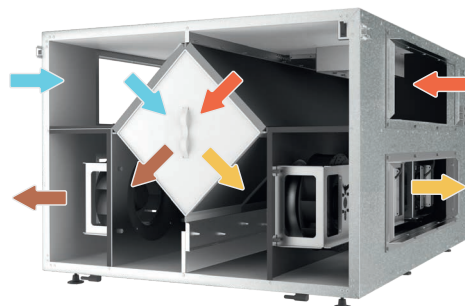
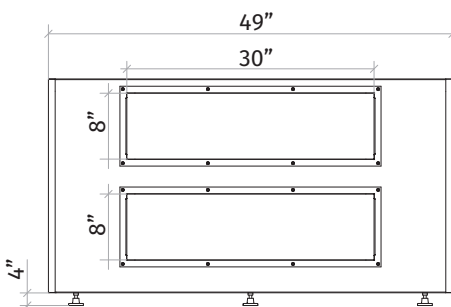
- Operation mode switch.
- Airflow balancing by supply and exhaust fan independent speed adjustment.
- Automatic recovery core frost protection.
- External control device connection.



ERV 13, ERV 17

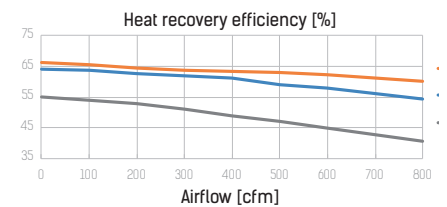
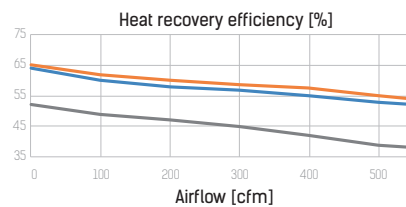
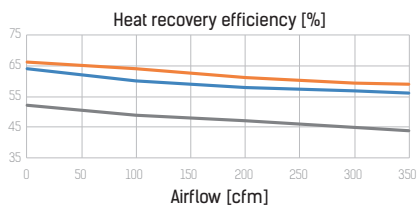
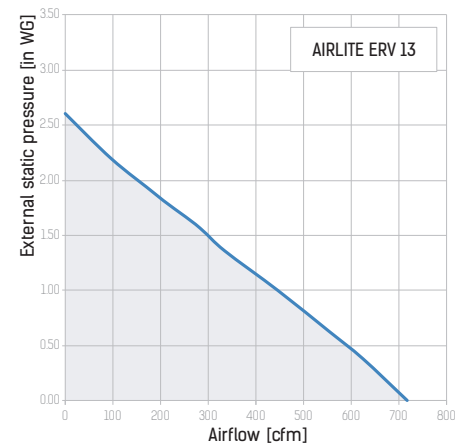
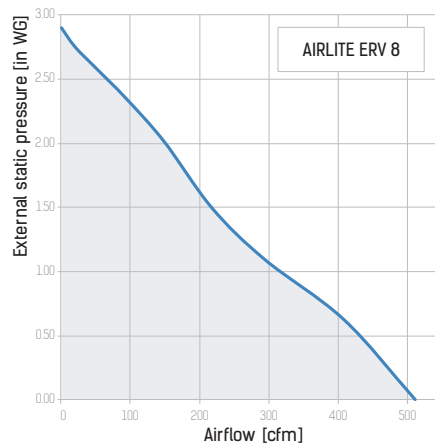
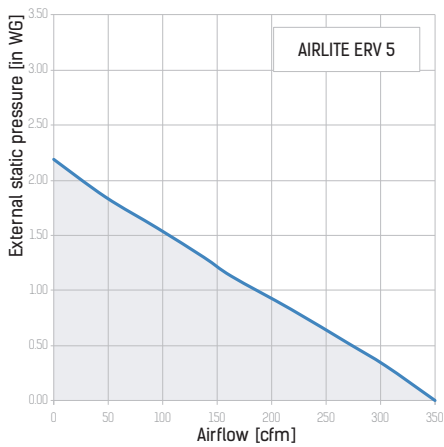


ERV 25



TECHNICAL DATA

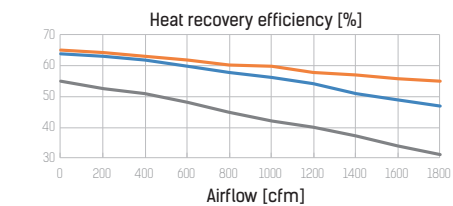
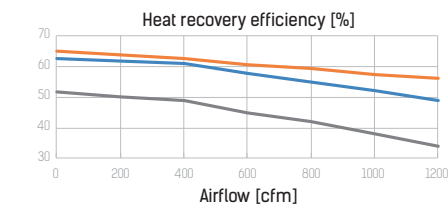
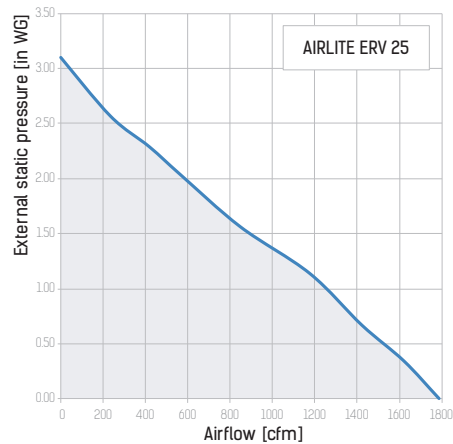
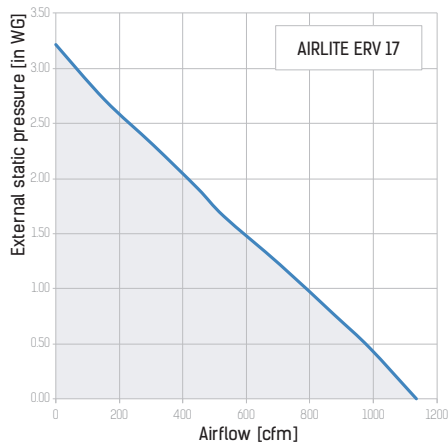
Parameters	AIRLITE ERV 5	AIRLITE ERV 8	AIRLITE ERV 13
Voltage [V / 60 Hz]	1 ~ 120	1 ~ 120	1 ~ 120
Unit power [W]	460	640	880
Unit current [A]	3.8	5.4	7.4
Minimum circuit Amps [MCA]	4.8	6.8	9.3
Maximum over current protection [MOP]	6.2	8.8	9.8
Sensible effectiveness @ max airflow [%]	66	54	63
Air flow @ ESP 0.4" WG [cfm]	300	450	610
Air flow max [cfm]	350	510	700
Transported air temperature [F]	-35 up to +140	-35 up to +140	-35 up to +140
Outer skin casing material	21 gauge galvanized steel	21 gauge galvanized steel	21 gauge galvanized steel
Insulation	1" mineral wool	1" mineral wool	1" mineral wool
Connected air duct size [in]	8x14	8x14	8x20



- Sensible winter & summer
- Winter total
- Summer total

TECHNICAL DATA

Parameters	AIRLITE ERV 17	AIRLITE ERV 25
Voltage [V / 60 Hz]	1 ~ 120	1 ~ 120
Unit power [W]	1330	2010
Unit current [A]	11.1	16.9
Minimum circuit Amps [MCA]	13.9	21.2
Maximum over current protection [MOP]	14.6	20.5
Sensible effectiveness @ max airflow [%]	56	55
Air flow @ ESP 0.4" WG [cfm]	1000	1600
Air flow max [cfm]	1135	1785
Transported air temperature [F]	-35 up to +140	-35 up to +140
Outer skin casing material	21 gauge galvanized steel	21 gauge galvanized steel
Insulation	1" mineral wool	1" mineral wool
Connected air duct size [in]	8x20	8x30



— Sensible winter & summer
— Winter total
— Summer total



VENTS-US reserves the rights to modify any of its products' features, designs, components and specifications at any time and without notice to maintain the development and quality of manufactured goods.