

CASING

Steel casing is covered with high quality multilayer aluminium and zinc alloy to prevent corrosion. The casing is equipped with a switch to turn the ventilator off when the service panel is opened. Service access from both left and right side.

HEAT RECOVERY CORE

Unique plate heat exchanger is made of aluminium and designed for high-efficient heat recovery. The stainless steel drain pan is located on the inlet and outlet sides.

FANS

The unit is equipped with supply and exhaust centrifugal fans with backward curved blades and built-in thermal overheating protection with automatic restart. The electric motors and impellers are dynamically balanced.

DEFROST SYSTEM

Fan stop defrost system is activated when the outdoor temperature falls below 23° F (-5° C).

FILTER

Washable MERV 6 air filters in exhaust and supply air streams.

CONTROL

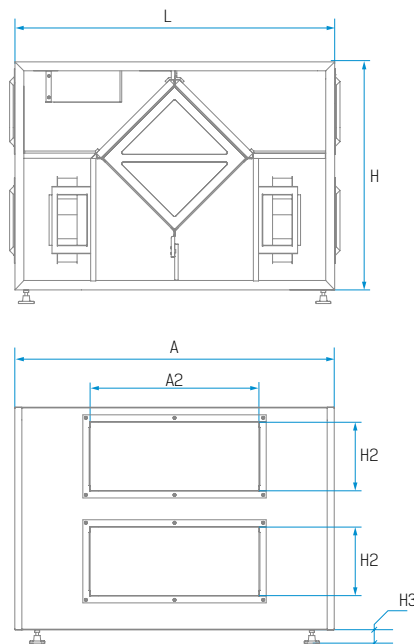
The unit incorporates an integrated automation and control system with following functions:

- Operation mode switch.
- Airflow balancing by supply and exhaust fan independent speed adjustment.
- Automatic recovery core frost protection.
- External control device connection.



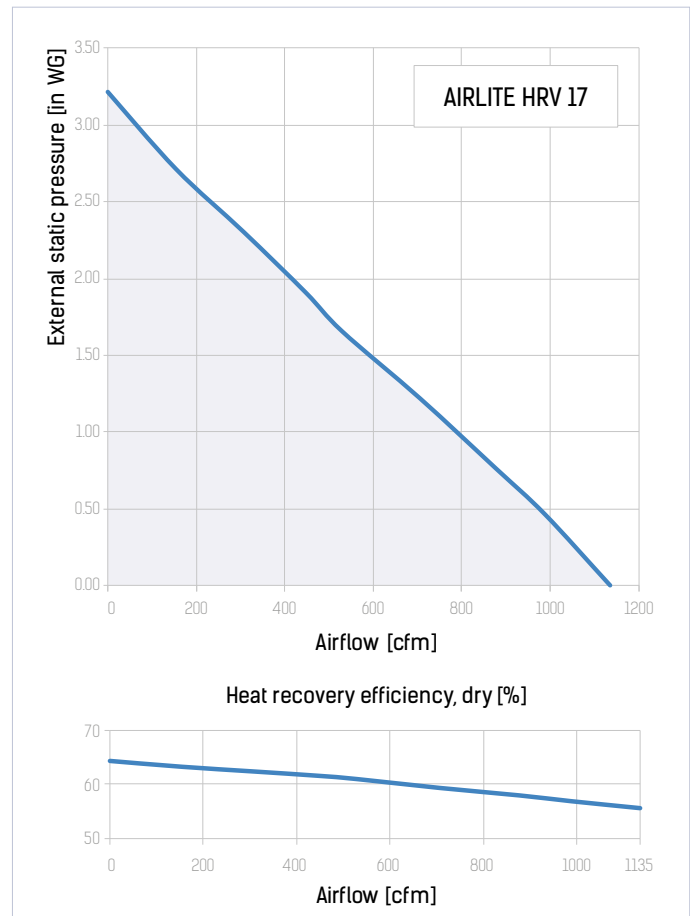
DIMENSIONS

Measurements [in]					
A	A2	H	H2	H3	L
37 1/4"	20"	26"	8"	4"	36 1/2"



TECHNICAL DATA

Parameters	AIRLITE HRV 17
Voltage [V / 60 Hz]	1 ~ 120
Unit power [W]	1330
Unit current [A]	11.1
Sensible effectiveness @ max airflow [%]	56
Air flow @ ESP 0.4" WG [cfm]	1000
Air flow max [cfm]	1135
Transported air temperature [°F]	-35 up to +140
Outer skin casing material	21 gauge galvanized steel
Insulation	1" mineral wool
Connected air duct size [in]	8×20



MODEL	QUANTITY	COMMENTS	PROJECT
			location:
			architect:
			engineer:
			contractor:
			submitted by:

Tel: 888-640-0925 Sales@ventsus.com
 513-348-3853 VentsUS.com
 Fax: 513-268-4597 11013 Kenwood Road,
 Cincinnati, Ohio 45242

