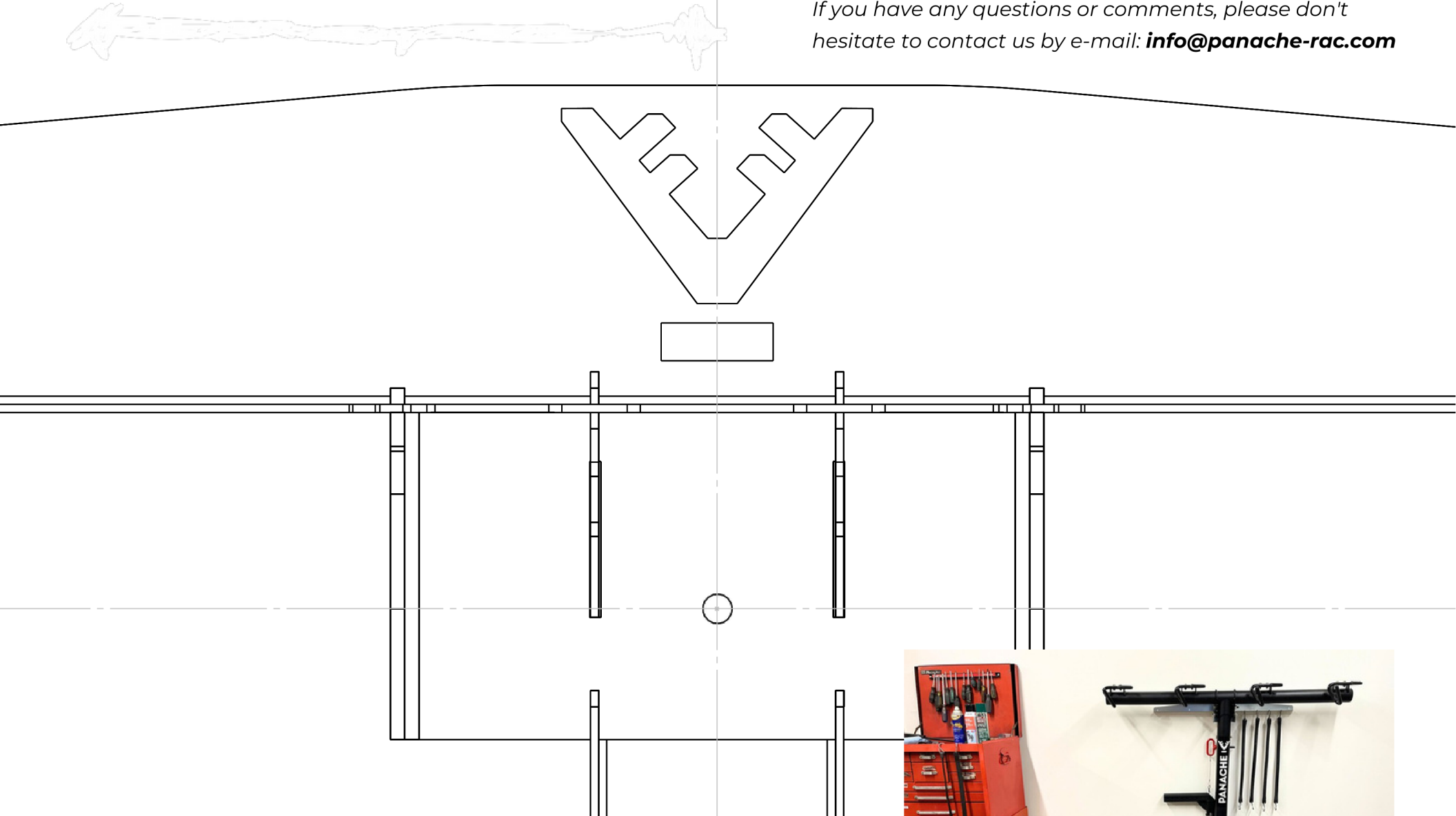


If you have any questions or comments, please don't hesitate to contact us by e-mail: info@panache-rac.com

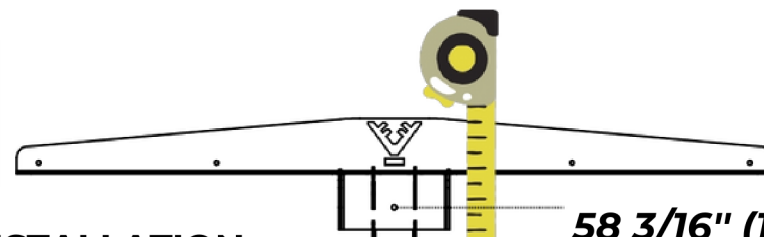
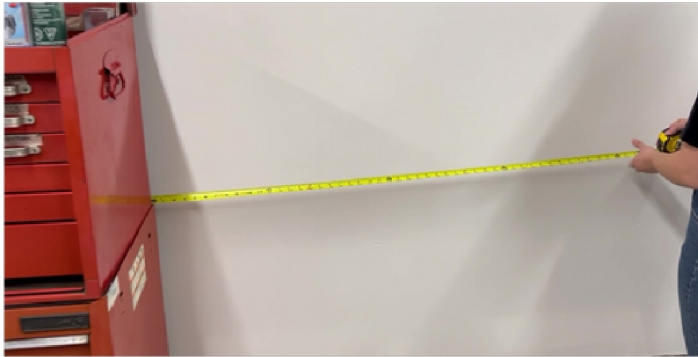


 **RAKARACK**



MATERIALS REQUIRED FOR INSTALLATION

- The RACKARACK
- (4 pieces + 1 long screw + 8 short screws + 9 wing nuts + 2 shoulder rings + 2 plastic stops)
- Tape measure
- Spirit level
- Pencil Square
- screwdriver
- Drill with 1/8" (3.2 mm) and 5/16" (7.9 mm) drill bits
- Hammer
- 2 3/4" (19.1 mm) wrenches



58 3/16" (147.8 CM)

1. POSITIONING

When installing, make sure you have assembled the RAKARACK according to the instructions given (page 2) and that it is firmly supported on the floor, thus ensuring maximum load-bearing capacity. It is essential to take this precaution to prevent any risk of tipping or material damage.

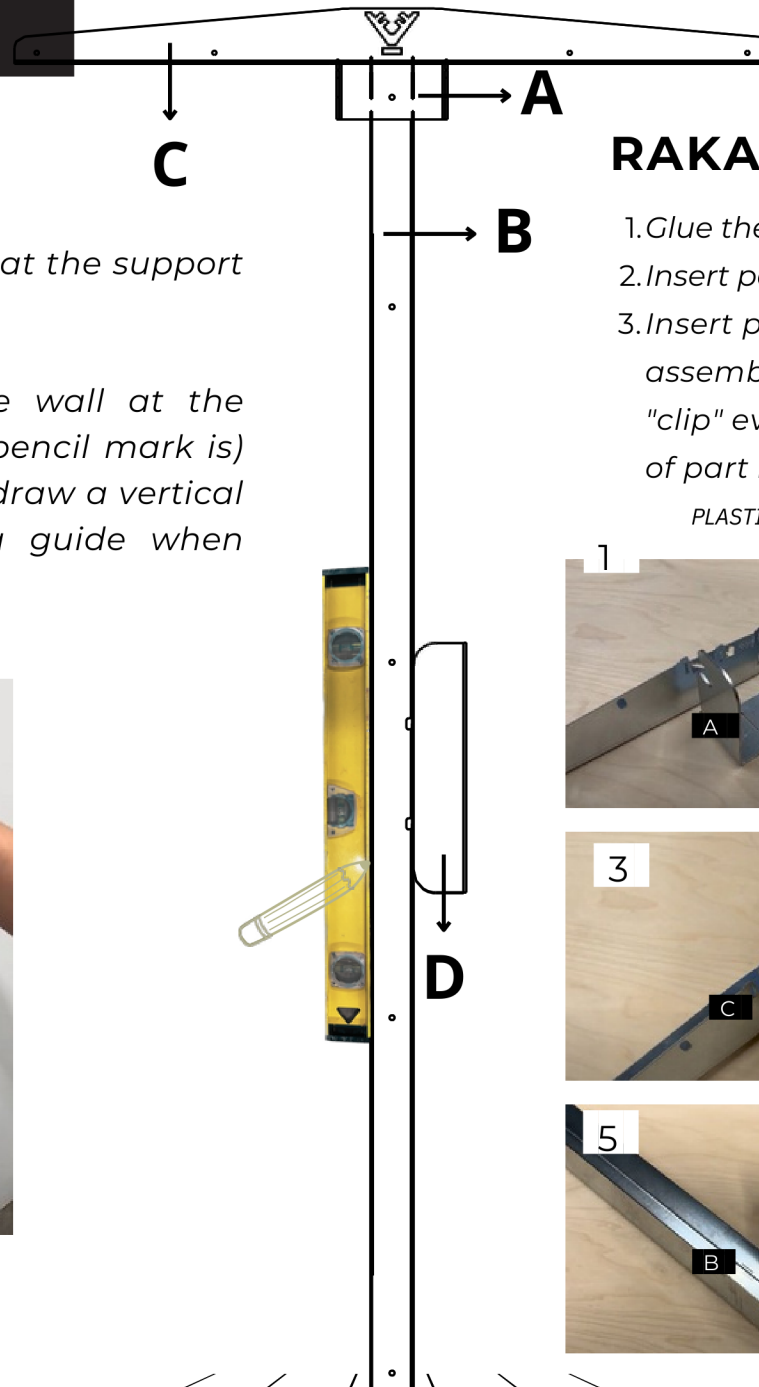
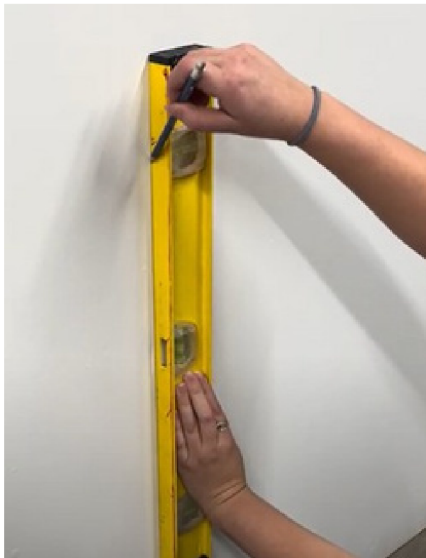
In addition, make sure you have the required clearance using a tape measure. Once you've measured the distances, mark them with a pencil (50" (127 cm) minimum suggested on each side and 58 3/16" (47.8 cm) clearance from the ground).

50" (127 CM)

2. LEVEL

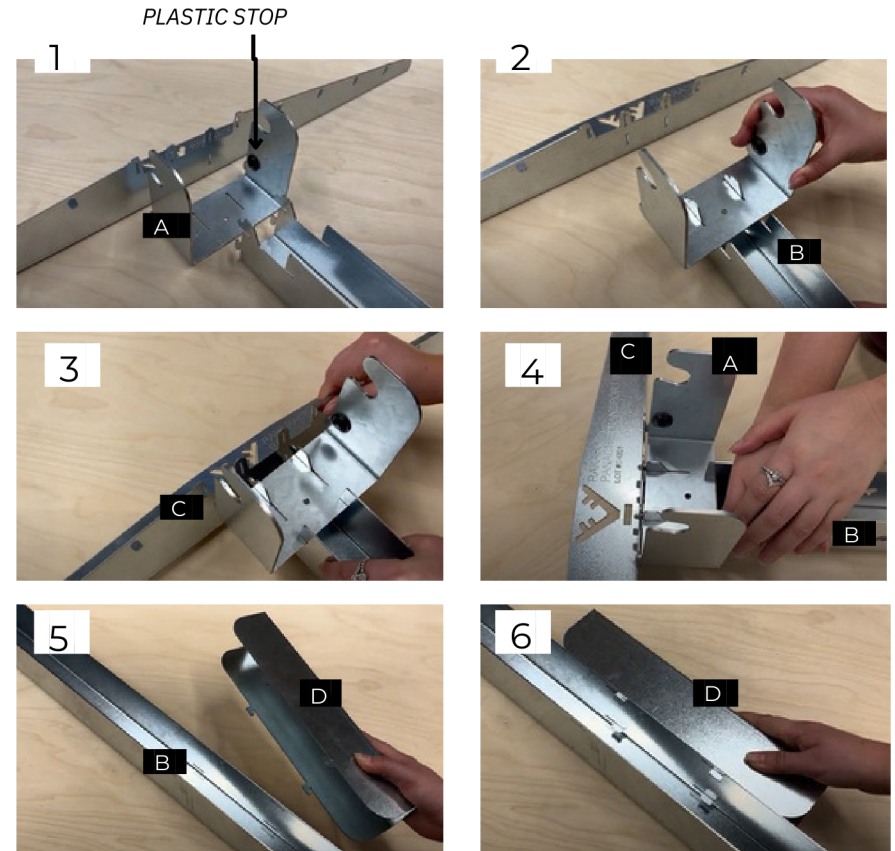
Use a spirit level to ensure that the support is perfectly horizontal.

Place the level against the wall at the chosen location (where the pencil mark is) and use the pencil again to draw a vertical line (which will serve as a guide when installing the RACKARACK).



RAKARACK ASSEMBLY

1. Glue the 2 plastic stops to the sides of part **A**.
2. Insert part **A** into part **B** and push down.
3. Insert part **C** with the other 2 parts already assembled (**A** and **B**). Push with both hands to "clip" everything together. Insert part **D** on the side of part **B**.



3.MAIN FASTENER

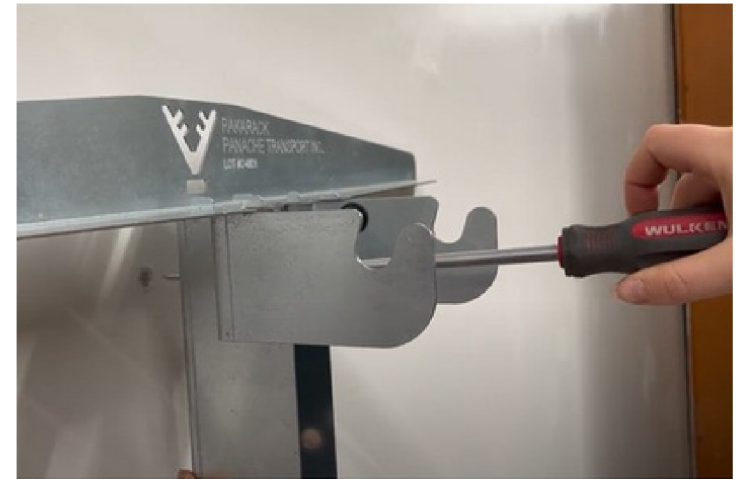
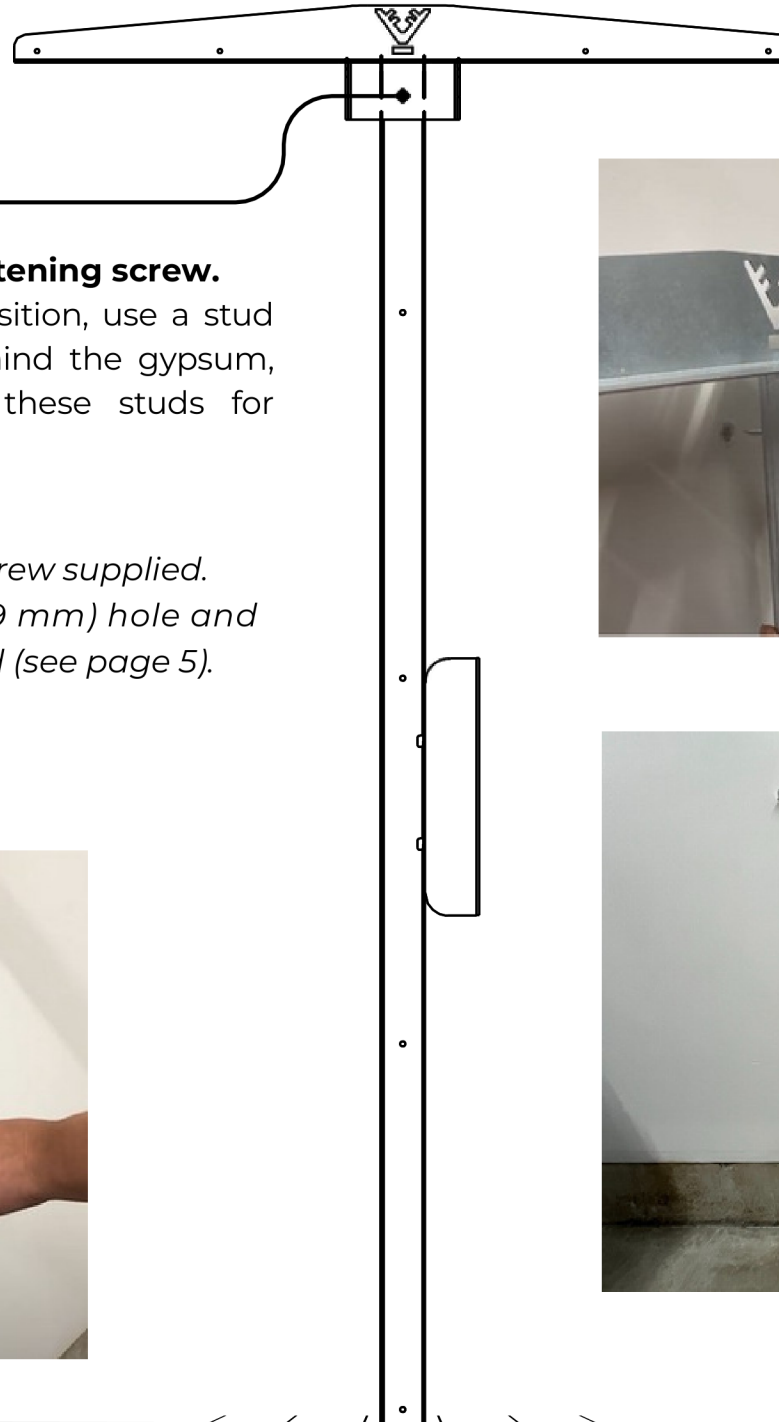
Ideally, find a stud for the main fastening screw.

If you're unsure of the wall's composition, use a stud finder to locate the wood laths behind the gypsum, and attach the wall bracket to these studs for maximum stability.

Drill a) hole 1/8" (3.2 mm

If directly in wood: install the long screw supplied.

If in gypsum: drill another 5/16" (7.9 mm) hole and install the winged ANCHOR supplied (see page 5).

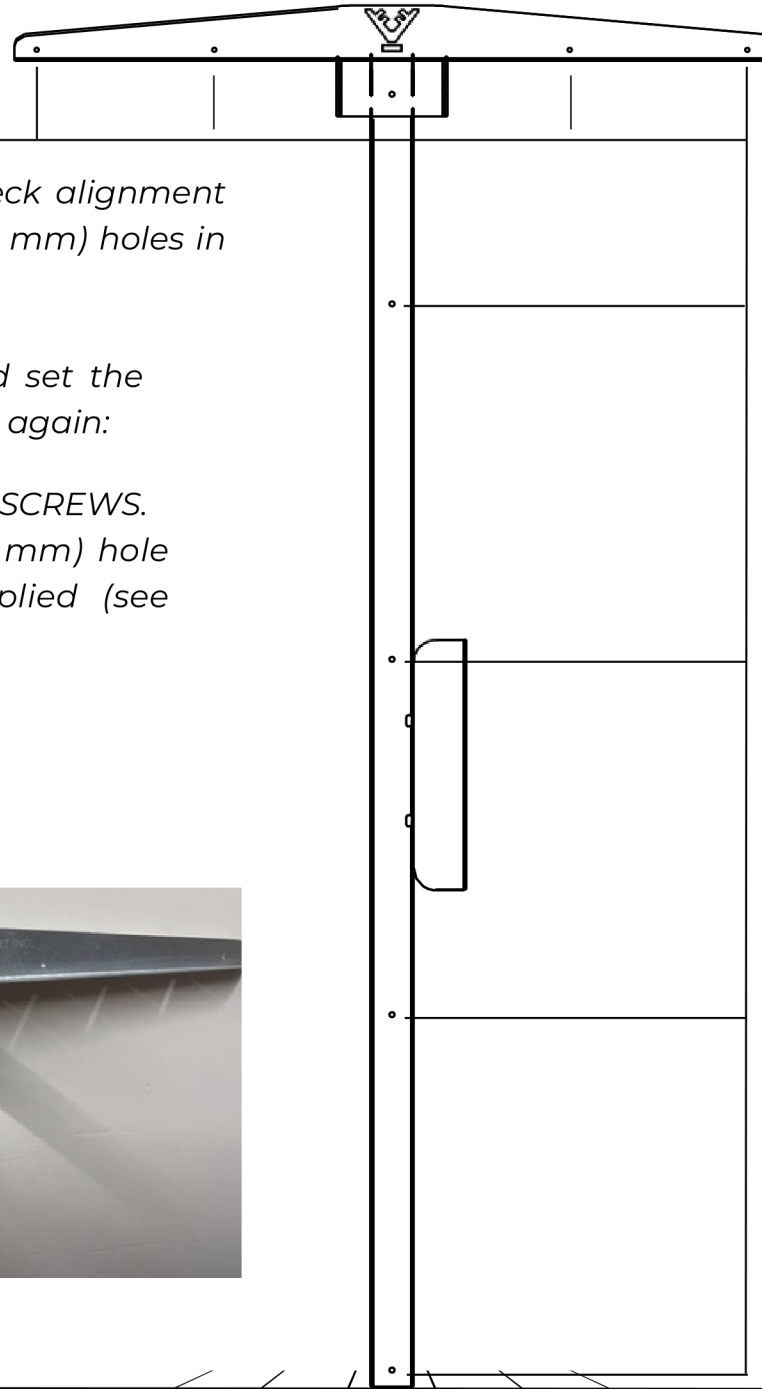


4. SECONDARY FASTENERS

Once the RAKARACK is in place, check alignment again (using a level) and drill 1/8" (3.2 mm) holes in all secondary fasteners.

Then unscrew the main bracket and set the RAKARACK aside to follow these steps again:

If directly in wood: install the supplied SCREWS.
If in gypsum: drill another 5/16" (7.9 mm) hole and fit the winged ANCHOR supplied (see page 5).

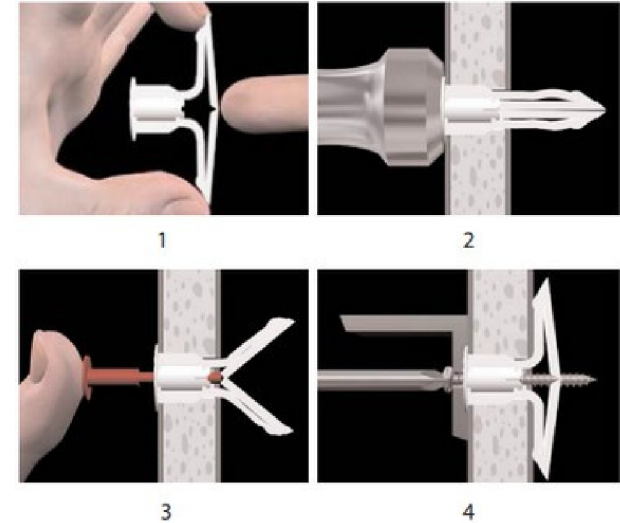
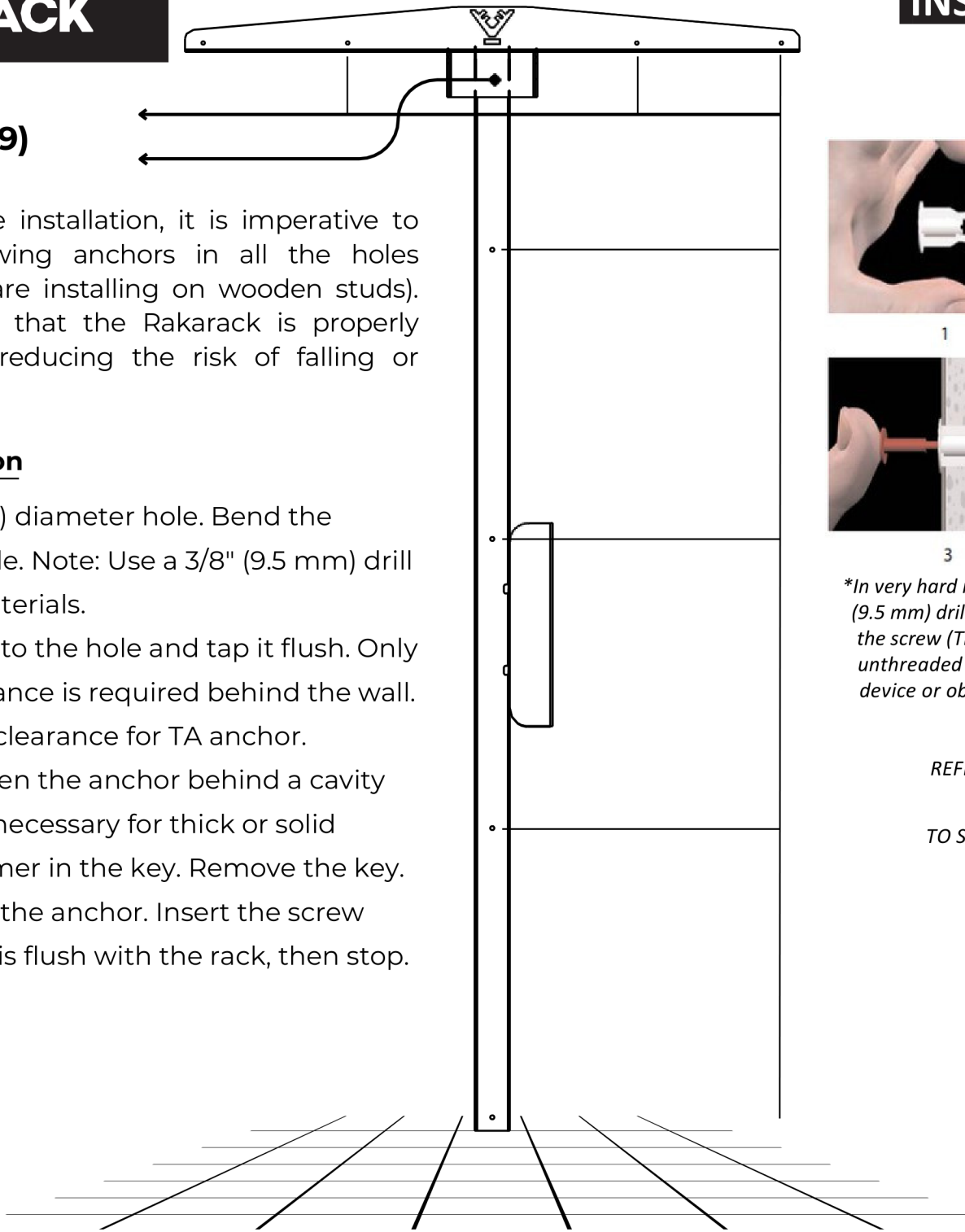


WING ANCHORS (9)

For a solid and secure installation, it is imperative to install the supplied wing anchors in all the holes provided (unless you are installing on wooden studs). These anchors ensure that the Rakarack is properly secured to the wall, reducing the risk of falling or becoming unstable.

Installation information

1. Drill a 5/16" (7.9 mm) diameter hole. Bend the anchor in the middle. Note: Use a 3/8" (9.5 mm) drill bit for very hard materials.
2. Insert the anchor into the hole and tap it flush. Only 3/4" (19.1 mm) clearance is required behind the wall. Only 1/2" (12.7 mm) clearance for TA anchor.
3. Insert the key to open the anchor behind a cavity wall or ceiling (not necessary for thick or solid walls). Do not hammer in the key. Remove the key.
4. Place the rack over the anchor. Insert the screw and tighten until it is flush with the rack, then stop. Do not overtighten.



**In very hard materials, such as ceramic, use a 3/8" (9.5 mm) drill bit. Note: Only the threaded part of the screw (TL) should be in the anchor itself; any unthreaded part of the screw (S) may be in the device or object to be anchored, but not in the anchor.*

REFERENCE: www.toggler.com

TO SEE THE DETAILED SHEET :



SHOULDER BUSHINGS

To be able to install your Panache rack on the RAKARACK, it is imperative to fit the shoulder bushings supplied.

Installation information

1. Unscrew the bolt nut (bottom one) using a 3/4" (19.1 mm) wrench.
2. Remove nut and bolt
3. Insert the 1st shoulder ring on the bolt. *Make sure the flat side (larger diameter) faces inwards.
4. Re-insert the bolt through the head and mast of your Panache rack.
5. Insert the 2nd shoulder ring on the bolt (*flat side inwards).
6. Place the nut on the bolt. Use a wrench or wrench to tighten the nut so that it makes contact with the shoulder rings.

Be sure not to overtighten to avoid damaging the threads.

WARNING

Intended use

The Rakarack is designed specifically for hanging Panache Racks and is not intended for use as a ladder, step or similar support. We remind you that using the Rakarack for purposes other than those for which it is intended may result in serious injury or damage to property.

Liability

Please note that we cannot be held responsible for any injury or accident occurring during installation of the Rakarack. It is your responsibility to install the product in accordance with the instructions provided and take the necessary precautions to avoid any dangerous situation.

