

KEY SYSTEMS

2-TAG SYSTEM

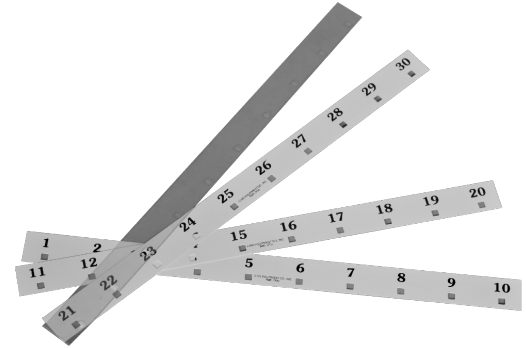


No. 508-A Security Key Tag

NUMBERED SECURITY KEY TAGS

This tag has an open brass link. It is made from 3/64" vulcanized fibre and is 1 1/4" octagonal shape. Words are dye stamped. Numbers are dye stamped and filled. Keys are attached instantly and locked securely to the tag with No. 517 Link Sealing Pliers.

PLEASE NOTE: NUMBERED OR BLANK #508-A TAGS ARE FURNISHED IN RED FIBRE UNLESS OTHERWISE SPECIFIED.



KEY HOOK LABELS AND LABEL SHIELDS

Key Hook Label No. 530 with Vinyl Label Shield No. 530-B

KEY RECEIPT CARDS

The receipt card is hung on the key hook under the keys and contains key and lock information. One receipt card is furnished for each hook.

NUMBERED DUPLICATE TAGS

These tags are made of 3/64" vulcanized fibre, 1 1/8" oval shaped. Numbers are dye stamped and filled. Tags have a nickel plated snap-on link.

No. 504 Duplicate Key Tag



KEY RECEIPT
Hang on Hook

No. _____

Keys R'c'd _____

Date _____

Signature _____

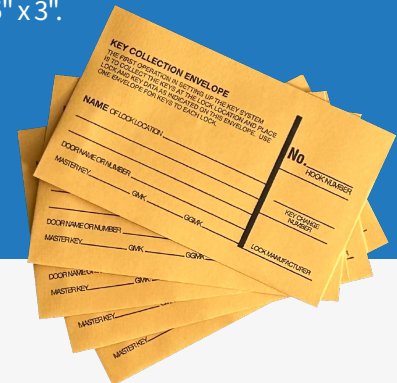
Other Side for Lock Name and Key series Nos.



No. 517 Link Sealing Pliers

KEY COLLECTION ENVELOPE NO. 535-A

This envelope is used for collecting keys. One envelope is used for the keys to each lock. Envelope is 5" x 3".



BOOK INDEX NO. 511-B

The vinyl binder holds sheets with a capacity of 75 entries each. Index sheets are complete with printed headings.

- No. 511 B-1 Numerical Index Printed in Red
- No. 511 B-2 Alphabetical Index Printed in Green
- No. 511 B-3 Key Change Number Index Printed in Blue



SECURELY IDENTIFY, ORGANIZE AND TRACK KEY ACCESS ...

1-TAG SYSTEM

The Lund 1-Tag System is efficient and easy to install. One set of numbered tags are included with snap links, as well as receipt cards, key collection envelopes, and three way index cards.

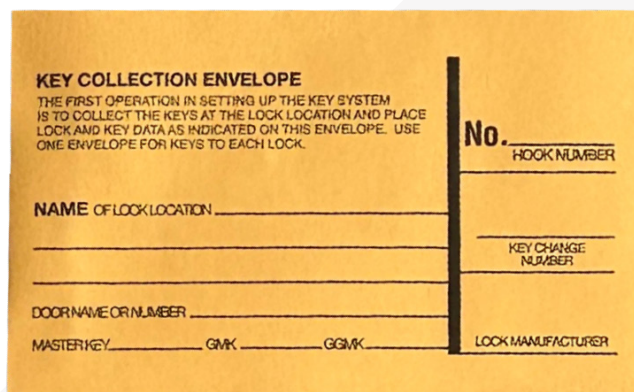


No. 507 Tag

NUMBERED KEY TAGS WITH SNAP ON LINKS

These tags are made of vulcanized fibre, 3/64" thick. Words are dye stamped. Numbers are dye stamped and filled.

PLEASE NOTE: NUMBERED OR BLANK #507 TAGS ARE FURNISHED IN RED FIBRE UNLESS OTHERWISE SPECIFIED. LINKS ARE INCLUDED.



KEY COLLECTION ENVELOPE No. 535-A

This envelope is used for collecting keys. One envelope is used for the keys to each lock. Envelope is 5" X 3".



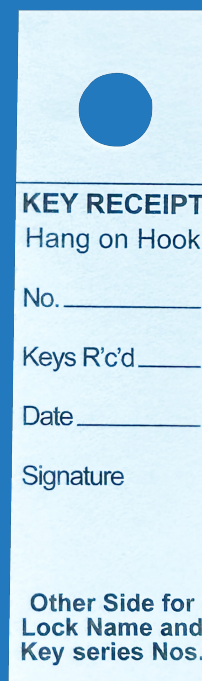
INDEX CARDS

- No. 511-1 Numerical Index Card. Printed in Red. Capacity for 56 entries.
- No. 511-2 Alphabetical Index Card. Printed in Green. Capacity for 112 entries.
- No. 511-3 Key Change Number Index Card. Printed in Blue. Capacity for 112 entries.
- Option: Book Index #511-B may be furnished in place of Index Cards at an extra charge.

KEY RECEIPT CARDS

The Receipt card is hung on the key hook under the keys and contains key and lock information. One receipt card is furnished for each key hook.

No. 513 Key Receipt Card



KEY RECEIPT
Hang on Hook

No. _____

Keys R'c'd _____

Date _____

Signature _____

Other Side for Lock Name and Key series Nos.

DELUXE WALL CABINETS

MANAGE KEY ACCESS SECURITY FROM SMALL RESIDENTIAL TO LARGE INDUSTRIAL INSTITUTIONS ...

Single door wall mounts are among Lund Equipment's best selling key cabinets. These high quality, versatile cabinets are a great solution for companies looking to secure 30 to 700 standard keys. Cabinets are welded and made from 18 gauge steel with a Lund grey powder coated finish. Doors have plated cylinder locks and continuous piano hinges, while other lock options are available upon request.

2-TAG KEY SYSTEMS



DIMENSIONS: 17 3/4" W X 11" H X 2 1/2" D

KEY CAPACITY	MODEL
30	1200
60	1201
90	1201-A
120	1201-B

KEY CAPACITY	MODEL
130	1202
160	1203
200	1203-A
250	1204
300	1204-A



DIMENSIONS: 17 3/4" W X 25" H X 2 1/2" D

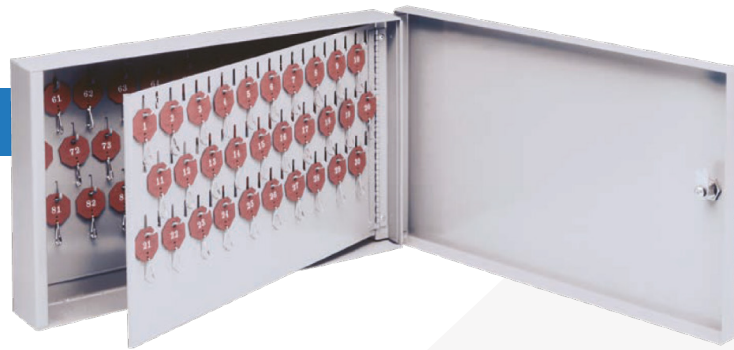


DIMENSIONS: 19 3/4" W X 25" H X 5" D

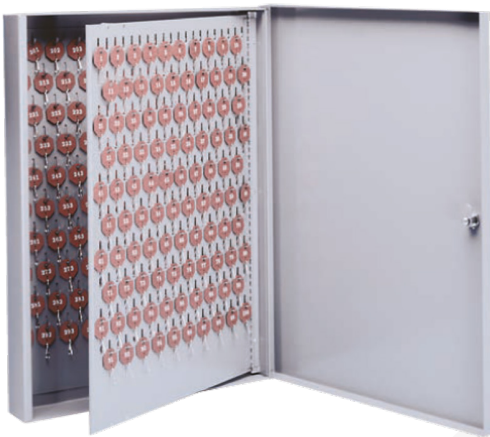
KEY CAPACITY	MODEL
350	1205
400	1205-A
450	1205-AA
500	1205-B
600	1205-C
700	1205-D

1-TAG KEY SYSTEMS

KEY CAPACITY	MODEL
30	C-30
60	C-60
90	C-90
120	C-120



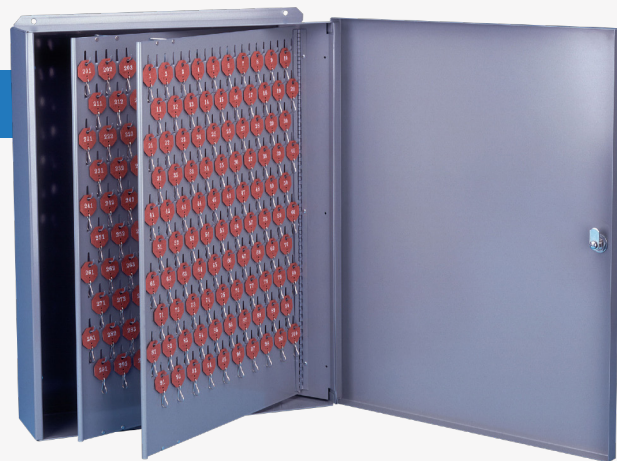
DIMENSIONS: 17 3/4" W X 11" H X 2 1/2" D



DIMENSIONS: 17 3/4" W X 25" H X 2 1/2" D

KEY CAPACITY	MODEL
130	C-130
160	C-160
200	C-200
250	C-250
300	C-300

KEY CAPACITY	MODEL
350	C-350
400	C-400
450	C-450
500	C-500
600	C-600
700	C-700



DIMENSIONS: 19 3/4" W X 25" H X 5" D

CUSTOMIZATIONS AVAILABLE FOR SINGLE DOOR WALL MOUNTS:

- Dual lock options available with most cabinets.
- Add an index pocket for extra organization. (Mounts inside of cabinet door.)
- Additional panels can be added to grow with your cabinet needs.
- See pages 23-24 for panel and lock options.



Shown above: Index Pocket

FLOOR MODEL CABINETS

CUSTOMIZABLE TO YOUR SPECIFIC APPLICATION ...



OVERALL CABINET DIMENSIONS:

24" W X 78" H X 18" D

BOTTOM STORAGE COMPARTMENT DIMENSIONS:

23 7/8" W X 19" H X 17" D

SMALL PARTS DRAWER UNIT DIMENSIONS:

17 1/4" W X 10 7/8" H X 11 5/8" D

The small parts unit can be installed for an extra charge. 18 dividers are provided for individual compartments.

Lund floor model key cabinets come furnished with a 2-Tag System, 1-Tag System, or No Tag System. The cabinet is made from 18 gauge steel with 20 gauge panels and a 3-point locking device. Standard numbering is available consecutively up to four digits. Standard 1/2" hooks on most floor cabinets.

Other variations are available upon request, including long hooks for holding 6 keys, and wider spacing. See page 17-18 for mote details.

Add extra storage to your floor model...



2-TAG SYSTEM

Cabinets furnished complete with 2-Tag Key System. Hook labels and tags are numbered consecutively from 1 and up. This system includes a book index to help keep your keys organized. Most floor model cabinets are expandable up to 2280. See page 5 to view included items in Lund's 2-Tag System.

KEY CAPACITY	MODEL
760	1206
1140	1208
1520	1210
1900	1211
2280	1212



1-TAG SYSTEM

Cabinets furnished complete with 1-Tag Key System, tags numbered consecutively from 1 and up. This system includes a book index to help keep your keys organized. This floor model is expandable to 2280 keys. See page 6 to view items included in Lund's 1-Tag System.

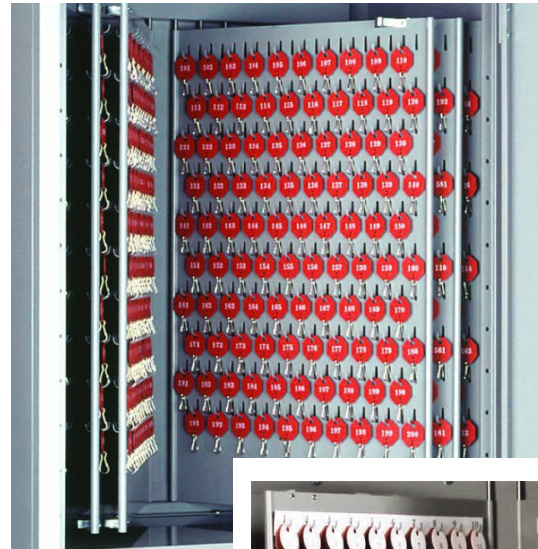
KEY CAPACITY	MODEL
760	C-1206
1140	C-1208
1520	C-1210
1900	C-1211
2280	C-1212



FLOOR MODEL CABINETS

FLOOR CABINETS 2500 SERIES

Lund Utility Combination floor model key cabinets come furnished with the complete 2-Tag System, 1-Tag System or No Tag System. The 2500 series houses 1200-2000 hooks with the capability of holding 3-4 standard keys per hook. The cabinet is made from 18 gauge steel, with 20 gauge panels and a 3 point locking device.



KEY CAPACITY	2-TAG MODEL	1-TAG MODEL	NO TAG MODEL
1200	2502	C-2502	2502-NS
1600	2503	C-2503	2503-NS
2000	2504	C-2504	2504-NS

FLOOR CABINETS D SERIES LONG LOOK

Lund D-Line floor model key cabinets come furnished with labels and shields. The D-Line cabinet houses 760-1520 hooks with the capability of holding up to six standard keys per hook. The cabinet is made from 18 gauge steel, with 20 gauge panels and a 3 point locking device.

With this cabinet, no key tags are used. Keys are hung directly on the key hooks. Panels have long 5/8" L-shaped hooks. Up to 6 duplicate keys or key blanks can be hung on each hook.

- No. D-760 - 760 Key Hooks
- No. D-1140 - 1140 Key Hooks
- No. D-1520 - 1520 Key Hooks

Furnished with standard numbered or blank labels and shields.

NOTE: Lund's 9 drawer unit and extra shelves can be purchased at an additional cost. See page 9 for image.



KEY CAPACITY	MODEL
760	D-760
1140	D-1140
1520	D-1520



DOUBLE DOOR / RECESSED CABINETS

DOUBLE DOOR SECURITY WITH ADDED CONVENIENCE ... MOUNTS DIRECTLY TO THE WALL OR TABLE TOP VERSION IS AVAILABLE.

These cabinets can be mounted on the wall or placed on a table, counter or desktop. They come equipped with holes for wall mounting. Steel base option (extra) available when ordering a new cabinet or if converting an existing 1800 model cabinet to table, counter, or desktop.

Lund 1800 double door key cabinets come furnished with the complete 2-Tag System; 1-Tag or No Tag Systems are available upon request. The 1800 series houses 700-1200 hooks with the capability of holding 3-4 standard keys per hook. The cabinet is made from 18 gauge steel, with 20 gauge panels and a 3 point locking device.

Other variations available including cabinets to house up to 360 automotive fobs or 300 core envelopes.



KEY CAPACITY	2-TAG MODEL	1-TAG MODEL
700	1802	C-1802
800	1803	C-1803
900	1804	C-1804
1000	1805	C-1805
1100	1806	C-1806
1200	1807	C-1807

DOUBLE DOOR CABINET DIMENSIONS:
23" W X 29 3/4" H X 8 3/4" D

CABINETS CAPACITY:
Up To 1200 Hooks

CABINET BASE 1800-B*

CABINET DIMENSIONS WITH BASE:
24" W X 2 1/4" H X 13" D

*Base (featured here) available at an additional cost.



LUND RECESSED “IN WALL” CABINET

- Flush front.
- No exposed bolts or rivets.
- Lund grey powder finish.
- Hinged key panels and doors have continuous piano type hinges.
- 11 gauge door and flange.



DIMENSIONS OF WALL OPENING

SMALL

- 18 ½” W X 12” H X 2 ½” D
- Standard 30 Key Capacity
- Cabinets can be expanded to 90

MEDIUM

- 18 ½” W X 25” H X 2 ½” D
- Standard 160 Key Capacity
- Cabinets can be expanded to 300

LARGE

- 20 ½ ” W X 25” H X 5 ¼” D
- Standard 400 Key Capacity
- Cabinets can be expanded to 700



	KEY CAPACITY	2-TAG MODEL	1-TAG MODEL
SMALL	30	1300	C1300
	60	1301	C1301
	90	1301-A	C1301-A
MEDIUM	160	1303	C1303
	200	1303-A	C1303-A
	250	1304	C1304
	300	1304-A	C1304-A
LARGE	400	1305-A	C1305-A
	500	1305-B	C1305-B
	600	1305-C	C1305-C
	700	1305-D	C1305-D

DRAWER CABINETS

DRAWER CABINETS PROVIDE EASE OF USE AND ORGANIZATION WHILE SECURELY HOUSING LARGE QUANTITIES OF KEYS.

Drawers operate on full ball bearing suspension and are under general automatic lock control. Cabinets can be expanded by adding additional panels. Drawer Cabinets can be ordered in 2-Tag, 1-Tag or No Tag Systems.

8 DRAWER CABINET – 2000-2400 HOOKS

- 18 1/8" W X 52" H X 28 3/4" D
- Each panel has 10 hooks
- 30 maximum panels per drawer

KEY CAPACITY	2-TAG MODEL	1-TAG MODEL
2000	2803	C-2803
2100	2804	C-2804
2400	2805	C-2805



6 DRAWER CABINET – 1200-1800 HOOKS

- 18 1/8" W X 39 3/16" H X 28 3/4" D
- Each panel has 10 hooks
- 30 maximum panels per drawer

KEY CAPACITY	2-TAG MODEL	1-TAG MODEL
1200	2603	C-2603
1400	2604	C-2604
1600	2605	C-2605
1800	2606	C-2606



4 DRAWER CABINET - 1610-3312 HOOKS

- Standard dimensions: 15¼" W X 52" H X 28¼" D
- Supersize dimensions: 19" W X 52¼" H X 28½" D
- Each standard panel has 23 hooks (supersize panels have 30 hooks)
- 36 maximum panels per drawer

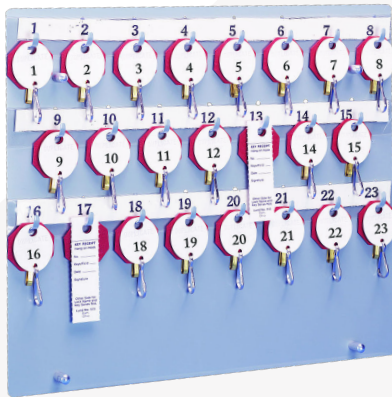
Supersize options

KEY CAPACITY	2-TAG MODEL	1-TAG MODEL
1610	1403	C-1403
2001	1404	C-1404
2507	1405	C-1405
3312	1406	C-1406
3600	1407	C-1407
3900	1408	C-1408
4320	1409	C-1409

DRAWER CABINET EXPANSION PANELS

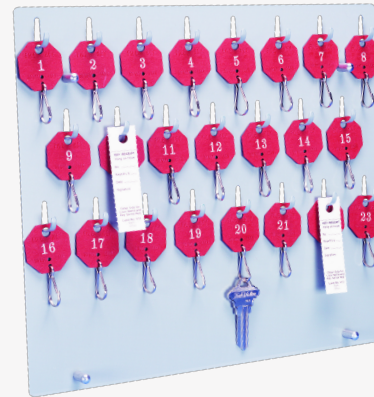
NO. DR-23-T2

4 DRAWER KEY PANELS FOR 2-TAG KEY SYSTEM



NO. DR-23-T1

4 DRAWER KEY PANELS WITH 1-TAG KEY SYSTEM



NO. 68 6 AND 8 DRAWER KEY PANEL



FLEET AUTOMOTIVE CABINETS

FITS KEY FOBS

Lund offers a complete line of automotive cabinets to secure and organize all of your key fob requirements.

FIXED PANEL WALL MOUNT AUTO CABINETS

Dimensions: 17 3/4" W X 25" H X 3" D

3 1/2" Row to Row Staggered

KEY CAPACITY	MODEL
60	551-F-3-60
120	551-F-3-120
180	551-F-3-180

FIXED PANEL EXPANSIONS

60	60-F
120	120-F

5" DEEP FIXED PANEL CABINETS

Dimensions: 19 3/4" W X 25" H X 5" D

4 1/2" In-line rows

200 - 4 1/2" In-line rows (Long Hook)	556-F-5-200
240 - 3 1/2" In-line rows	556-F-5-240



REMOVABLE PANEL WALL MOUNT AUTO CABINETS

Dimensions: 19 3/4" W X 25" H X 5" D

KEY CAPACITY	MODEL
60	556-RE-5-60
120	556-RE-5-120
180	556-RE-5-180
240	556-RE-5-240

REMOVABLE PANEL EXPANSION

60-H-RE



AUTO SPECIAL CABINETS

The Lund 2504 Auto Special floor model is ideal for a large number of auto/fleet keys. This cabinet comes furnished with numbered or blank labels and shields. Our 2504 Special houses up to 1200 hooks, with up to 20 removable panels. A bottom storage compartment is ideal for small a parts cabinet. Cabinet is made from 18 gauge steel, with 20 gauge panels and a 3 point locking device.

Other variations are available upon request, including options with different panels or additional shelves. If looking to hang multiple large/bulky key fobs, please see our D-Line Special.

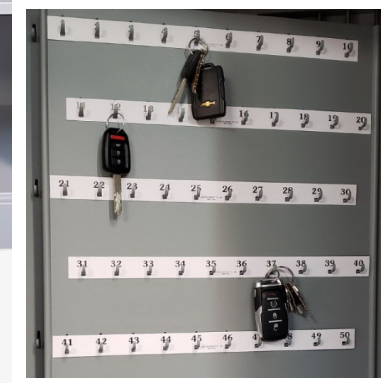
CABINET DIMENSIONS:

24" W X 78" H X 18" D

BOTTOM STORAGE DIMENSIONS:

23" W X 13" H X 17" D

3 1/2" staggered rows



KEY CAPACITY	MODEL
600	2504-SPEC-AUTO-600
1200	2504-SPEC-AUTO-1200



**4 1/2" Row
To Row
Staggered**

D-LINE SPECIAL

The Lund Special D-Line floor model is ideal for a large number of auto/fleet keys. This cabinet comes furnished with numbered or blank labels and shields. The D-Line Special houses up to 800 long L-shaped hooks. Extra row-to-row spacing with larger stoppers between panels to accommodate bulky key fobs. Cabinet is made from 18 gauge steel, with 20 gauge panels and a 3 point locking device.

CABINET DIMENSIONS:

24" W X 78" H X 18" D

BOTTOM STORAGE DIMENSIONS:

23" W X 19" H X 17" D

KEY CAPACITY	MODEL
400	D-Line Auto-400
600	D-Line Auto-600
800	D-Line Auto-800

SMALL BUSINESS/RESIDENTIAL

KEEP YOUR PERSONAL KEYS SAFE WITH LUND'S KEYS STORAGE SOLUTIONS ...

Needing to keep your personal keys safe? Lund's key storage solutions can help keep your car, boat, and RV keys safe and secure.



MINI KEY CABINET

DIMENSIONS: 8 3/4" W X 11" H X 1 1/2" D



DELUXE CABINET WITH 2-TAG KEY SYSTEM

KEY CAPACITY	MODEL
10	10
20	20

DELUXE CABINET WITH 1-TAG KEY SYSTEM

KEY CAPACITY	MODEL
10	C-10
20	C-20

BIG HEAD KEY CABINET FOR HOTELS - MOTELS - SENIOR CENTERS

These key cabinets make it easier to store and control big head keys. Constructed of 18 gauge steel with welded construction. All cabinets come with a lock and 2 keys.



Shown: BH-551-140-3

	KEY CAPACITY	MODEL
SM	40	BH-570-40-3
	60	BH-570-60-3
MED	140	BH-551-140-3
	210	BH-551-210-3
LG	350	BH-556-350-5

PORTABLE KEY CASE

Secure Your Keys On The Go



DIMENSIONS: 12 ¼" W X 5" H X 8 ¼" D

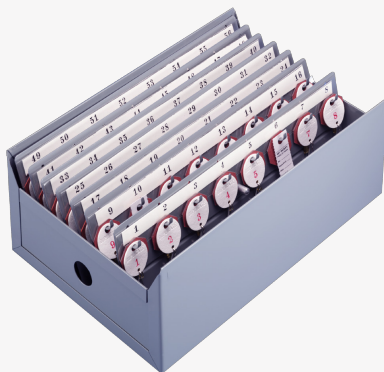
Lund portable key case comes furnished with a 2-Tag System, 1-Tag System, or No Tag System. The durable key case houses 56 hooks with the capability of holding 3-4 standard keys per hook. This case is made of 18 gauge steel, with 20 gauge panels.

Case comes equipped with a hinged cover, latch, and carrying handle.

KEY CAPACITY	2-TAG MODEL	1-TAG MODEL
56	CH562	CH561

PORTABLE KEY TRAYS

DIMENSIONS: 12" W X 4 ¾" H X 8" D



Lund portable key trays come furnished with a 2-Tag System, 1-Tag System, or No Tag System. The key tray houses 56 hooks with the capability of holding 3-4 standard keys per hook.

Trays are perfect for offices, schools, churches, or garages. Tray easily fits inside a drawer cabinet or desk.

KEY CAPACITY	2-TAG MODEL	1-TAG MODEL
56	1900	1901

SPECIALTY CABINETS

CORE LOCK CABINETS

Store lock cores easily in heavy vinyl envelopes. Formed of reinforced vinyl with clear window for easy visibility. Equipped with brass grommets for top hanging on hooks of cabinets. Standard capacity is 20, 50, 75, 100, and 125. Larger capacities also available in an 1800 cabinet.

DIMENSIONS:

SM - 17 3/4" W X 11" H X 3" D

MED - 17 3/4" W X 25" H X 3" D

LG - 19 3/4" W X 25" H X 5" D

	CAPACITY	MODEL
SM	20	CE-570-20-3
	30	CE-570-30-3
MED	50	CE-551-50-3
	75	CE-551-75-3
LG	100	CE-556-100-5
	125	CE-556-125-5



Shown: CE-570-20-3



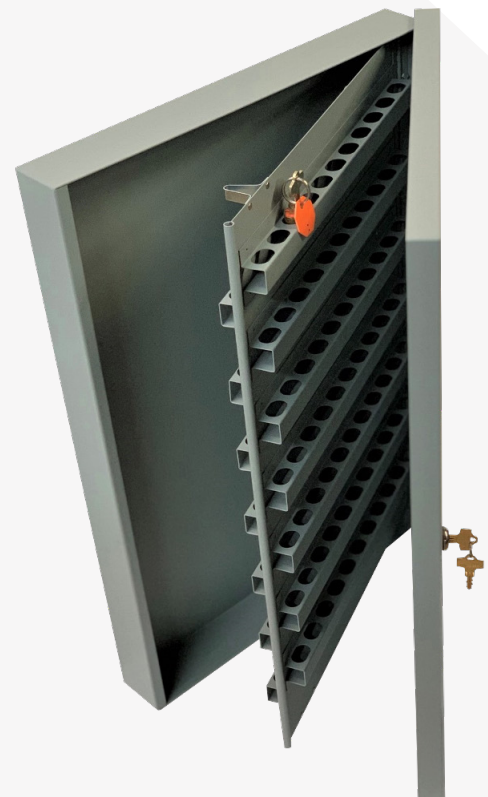
VINYL CORE ENVELOPES

DIMENSIONS: 4 1/4" H X 2 3/4" W

CORE LOCK CABINET

Storing large capacities of removable and interchangeable cores now made easy. Panels are equipped with oval shaped slots for accommodating a wider range of cores. Available in both single and double door options listed below.

	CAPACITY	MODEL
MED	154	CORE-551-154-3
LG	308	CORE-556-308-5
DOUBLE DOOR	462	CORE-1800-462-8
	616	CORE-1800-616-8
	770	CORE-1800-770-8



NEW PRODUCT – VALET

Cabinets made in America with 14 gauge U.S. steel. Movable stand with weather resistant black powder coat finish.

- 20 gauge interior hook racks
- 11 gauge uprights

DIMENSIONS: 24” W x 18” D x 78” H (with stand)

CAPACITY	MODEL
50	VAL-50
100	VAL-100
150	VAL-150
200	VAL -200



DON'T SEE WHAT YOU ARE LOOKING FOR? ...

LUND CAN BUILD A CUSTOM CABINET TO MEET YOUR SPECIFIC NEEDS.

FEATURED CUSTOM KEY CABINETS - The professionals at Lund Equipment are always happy to construct custom cabinets designed to meet your individual needs. We need some information from you to provide you with a quote and the dimensions for your cabinets. When reaching out to our professionals, please specify the following information so we can quickly provide the perfect cabinet design:

What kinds of keys are you hanging?

- Standard Keys
 Key Fobs
 Prison Keys
 Auto Keys
 Extra Long Keys

How many keys (minimum - maximum) will you need to store?

- Under 30
 31-120
 121-300
 301-700
 701+

How do you plan on hanging the keys?

- Key Tag
 Directly on Hook
 Key Ring

If on key ring, how many keys per ring? _____

Do you need to hang duplicate keys?

Where will cabinets be located?

- Wall
 Table Top
 Drawer
 Free Standing Floor Model

**SPECIAL
ORDERS**

Building a quality custom cabinet takes time. We want to make sure we do it right. Please allow extra time for us to custom build a unique cabinet to meet your specifications.

PANELS AND LOCKS

LUND WALL PANELS ARE DESIGNED FOR BUILDING CONTRACTORS, INDUSTRIAL PLANTS, OFFICES, OR HOMES WHERE SIMPLE KEY STORAGE IS DESIRED.

Lund Equipment has a full range of panels. Panels are made of 20 gauge steel with a light grey powder coat finish. Included are blank C-1507 tags with nickel plated links.



NO 521 WALL PANEL

Dimensions: 15 5/8" W X 23" H

Capacity: 100 Key Hooks

The 521 wall panel is a very popular option with many building contractors. These panels have 100 hooks with the capability of holding 3-4 standard keys per hook. They come furnished with our blank vinyl C-1507 white octagonal key tags, which makes them ideal for "do it yourself" marking.

NO. 520 WALL PANEL

DIMENSIONS: 11 3/4" W X 10" H

CAPACITY: 23 Key Hooks

The 520 wall panel is a very popular option with many building contractors. These panels have 23 hooks with the capability of holding 3-4 standard keys per hook. They come furnished with our blank vinyl C-1507 white octagonal key tags, which make them ideal for "do it yourself" marking.



KEY CAPACITY	MODEL	DIMENSIONS
23	W-520	11 3/4 W X 10 H
100	W-521	15 5/8 W X 23 H
30	W-30	15 5/8 W X 9 1/8 H
30	W-30-PO	11 3/4 W X 17 H
60	W-60	15 5/8 W X 23 H
70	W-70	15 5/8 W X 23 H

CHOOSE THE RIGHT LOCK FOR YOUR CABINET NEEDS ...

Wall cabinets come standard with a cam lock. Customizing your Lund Key Cabinet is easy with Lund's extensive assortment of locks. Talk to one of our friendly reps about modifying your cabinet.

- Standard Cam Lock (keyed alike or keyed different)
- Digital Locks
- Removable Core Cylinder Housing installed (core not included)
- Dual Lock Option
- Keyless Slam Lock (with or without audit trail)
- Tubular Lock



ACCESSORIES

CUSTOMIZE OR UPGRADE YOUR LUND EQUIPMENT CABINET WITH ONE OF THESE ACCESSORIES.



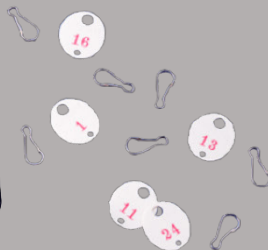
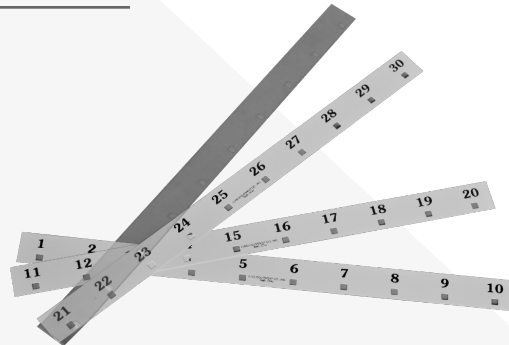
BOOK INDEX NO. 511-B

The book index has a vinyl binder cover and triple index sheets. Index sheets are complete with printed headings. Both sides of sheets are used. 75 entries per page. Extra index sheets can be purchased separately.

- No. 511 B-1 Numerical Index Printed in Red
- No. 511 B-2 Alphabetical Index Printed in Green
- No. 511 B-3 Key Change Number Index Printed in Blue

KEY HOOK LABELS AND SHIELDS

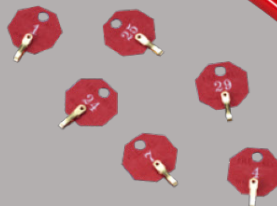
Key Hook Label No. 530 With Shield No. 530-B



KEY RECEIPT
Hang on Hook

No. _____
Keys Rec'd _____
Date _____
Signature _____

Other Side for
Lock Name and
Key series Nos.
Lund No 513
Bath,
Ohio



No. 535-A KEY COLLECTION ENVELOPE
THE FIRST OPERATION IN SETTING UP THE LUND KEY SYSTEM IS TO COLLECT THE KEYS AT THE LOCK LOCATION AND PLACE LOCK AND KEY DATA AS INDICATED ON THIS ENVELOPE. USE ONE ENVELOPE FOR KEYS TO EACH LOCK.

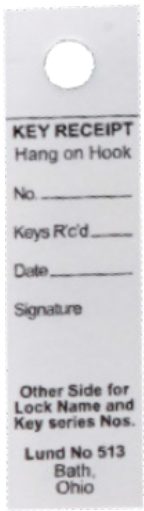
No. _____
HOOK NUMBER

NAME OF LOCK LOCATION _____
KEY CHANGE NUMBER _____

DOOR NAME OR NUMBER _____
LOCK MANUFACTURER _____

MASTER KEY _____ GMK _____ GGK _____

LUND EQUIPMENT CO., INC. — BATH, OHIO 44210



KEY RECEIPT CARDS

The Receipt card is hung on the key hook under the keys and contains key and lock information. One receipt card is furnished for each key hook.

No. 513 Key Receipt Card



INDEX CARDS

- No. 511-1 Numerical Index Card. Printed in Red. Capacity 56 keys.
- No. 511-2 Alphabetical Index Card. Printed in Green. Capacity 112 keys.
- No. 511-3 Key Change Number Index Card. Printed in Blue. Capacity 112 keys.
- Option: Book Index #511-B may be furnished in place of Index Cards at an extra charge.

SPECIAL KEY TAGS



C-1507

VINYL BLANK TAG

- A low cost temporary tag.
- Both sides of tag have a satin surface for do-it-yourself writing, rubber stamping, and other methods of marking.
- Includes nickel plated snap on links.

NUMBERING NOT AVAILABLE.



PLASTIC COLOR TAGS

Used for color coding floors, rooms, apartments, and building. Made of plastic. Numbers only. Numbers are hot stamped in contrasting colors. Octagonal and oval tags are available.

MULTIPLE COLORS AVAILABLE:
Choose from red, blue, white, yellow, orange, green and others.

LINKS INCLUDED.



BRASS AND ALUMINUM TAGS

Available as follows:

1. Die Stamped Only
2. Die Stamped and Black Filled
3. Completely Blank



BEAD KEY CHAINS

Available in 4" brass sparkle and standard 12" nickel plated bead chains.



SPLIT KEY RINGS

Tempered spring steel, nickel plated rings.

DIMENSIONS: 7/8", 1", 1 1/2", 2" diameter