



GIA
GEM TRADE LABORATORY

New York Headquarters
580 Fifth Avenue | New York, NY 10036-4794
T: 212-221-5858 | F: 212-575-3095

Carlsbad
5355 Armada Drive | Carlsbad, CA 92008-4699
T: 760-603-4500 | F: 760-603-1814

DIAMOND GRADING REPORT

GIA REPORT 13757516

October 13, 2004

Shape and Cutting Style EMERALD CUT
Measurements 9.49 x 6.85 x 4.91 mm
Weight 3.01 carat

Proportions

Depth 71.7 %
Table 67 %
Girdle MEDIUM TO SLIGHTLY THICK
Culet NONE

Finish

Polish GOOD
Symmetry GOOD

Clarity Grade VS1
Color Grade E
Fluorescence NONE

Comments:

Pinpoints are not shown.
Surface graining is not shown.



173794101

This Report is not a guarantee, valuation or appraisal. This Report contains only the characteristics of the diamond described herein after it has been graded, tested, examined and analyzed by GIA Gem Trade Laboratory under 10X magnification, and/or has been inscribed, using the techniques and equipment available to GIA Gem Trade Laboratory at the time of the examination and/or at the time of being inscribed, including fully corrected triplet loupe and binocular microscope, master color comparison diamonds, standardized viewing environment and light source, electronic carat balance, synthetic diamond screening device, high intensity short wave fluorescence imaging system, short wave ultraviolet transmission detection system, optical measuring device, micro laser inscribing device, ProportionScope®, ultraviolet lamps, millimeter gauge, and ancillary instruments as necessary. Red symbols denote internal characteristics (inclusions). Green or black symbols denote external characteristics (blemishes). Diagram is an approximate representation of the diamond, and symbols shown indicate type, position, and approximate size of clarity characteristics. All clarity characteristics may not be shown. Details of finish are not shown. The recipient of this Report may wish to consult a credentialed Jeweler or Gemologist about the importance and interrelationship of cut, color, clarity and carat weight.

GIA
CLARITY
SCALE

FLAWLESS
INTERNALLY
FLAWLESS

VVS₁

VVS₂

VS₁

VS₂

SI₁

SI₂

I₁

I₂

I₃

VERY VERY
SLIGHTLY
INCLUDED

VERY SLIGHTLY
INCLUDED

SLIGHTLY INCLUDED

INCLUDED

COLORLESS

NEAR COLORLESS

FAINT

VERY LIGHT

LIGHT

GIA
COLOR
SCALE

D

E

F

G

H

I

J

K

L

M

N

O

P

Q

R

S

T

U

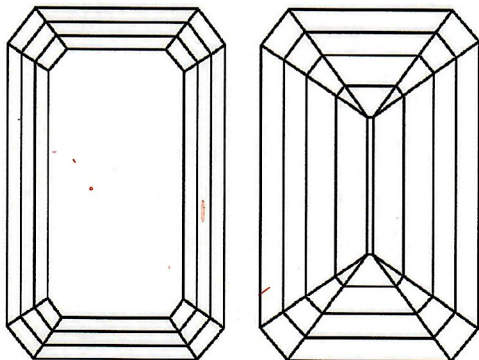
V

W

X

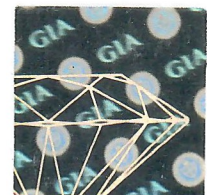
Y

Z



KEY TO SYMBOLS

- Crystal
- ~ Feather
- Cloud
- \\ Needle



IMPORTANT DOCUMENT, STORE SAFELY

The security features in this document, including the hologram, security screen, microprint lines and chemical sensitivity, in addition to those not listed, exceed document security industry guidelines.

NOTICE: IMPORTANT LIMITATIONS ON BACK
COPYRIGHT ©2000 GEMOLOGICAL INSTITUTE OF AMERICA, INC.