



AlgoLaser

WiFi Configuration Tool Manual

Contents

1. Introduction	1
2. Operational Environment	1
2.1 Hardware Requirements	1
2.2 Software Requirements	1
2.3 Supported Engraver Models	1
3. Download	1
3.1 Download from algolaser.cn	1
3.2 Download from algolaser.com	2
4. Quick Start Guide	2
4.1 Before you start	2
4.2 Connect Devices	2
4.3 Configure WiFi	3
4.4 Assign IP	3
4.5 Copy IP	5
5. Function Introduction	7
5.1 Connect Devices	7
5.2 Configure WiFi	8
5.3 Assign IP	8
5.4 Obtain Device IP	9

5.5 Output Information Area	9
5.6 Help Area	9

1. Introduction

The AlgoLaser WiFi configuration Tool is a comprehensive desktop software that integrates functions such as device connectivity, WiFi configuration, dynamic IP allocation, setting static IP, and obtaining Device IP. This user manual provides instructions on device connectivity, WiFi configuration, dynamic IP allocation, setting static IP, and acquiring Device IP, facilitating user-friendly operation.

2. Operational Environment

2.1 Hardware Requirements

A standard PC with a full configuration

2.2 Software Requirements

Windows 10 or later

2.3 Supported Engraver Models

AlgoLaser Alpha、AlgoLaser DIY KIT、AlgoLaser Alpha ETK、AlgoLaser DIY KIT ETK

3. Download

3.1 Download from the official AlgoLaser website.

Link: <https://algolaser.cn/download/>

QR Code:



3.2 Download from the international official AlgoLaser website

Download from the international official AlgoLaser website [Support] -> [Configuration Tools Download]


Link: <https://algolaser.com/pages/support>

4. Quick Start Guide

4.1 Before you start

1. Power on the device by supplying electricity and long-pressing the device's power button. Then, connect the device to the computer using a USB cable.
2. Install the software and open it.

4.2 Connect Device

To connect the device, open the software and it will automatically recognize the device's serial port. Click 'Connect' (Figure 1). If the connection is successful, a pop-up box will confirm it and the 'Terminal' area will display the successful connection information. If the connection fails, a pop-up box will indicate the failure and the 'Terminal' area will display the corresponding information. To retry, click  'Refresh' and then 'Connect'.

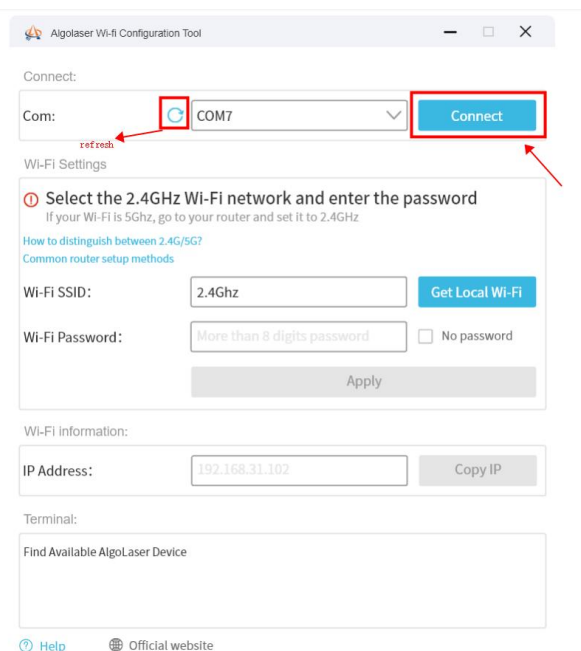


Figure 1

4.3 Configure WiFi

Once the device is connected successfully, if the computer is already linked to a WiFi network, click the "Get Local Wi-Fi" button to automatically retrieve and populate the computer's WiFi name into the "Wi-Fi SSID" input box. Then, input the password into the "Wi-Fi password" input box. If there's no password, select "No password". Afterward, click "Apply" to initiate the network configuration (refer to Figure 2). A successful configuration will prompt a pop-up box indicating "Network Configuration Successful" and display the connection success information in the "Terminal" area. In case of a configuration failure, a pop-up box will appear stating "Network Configuration Failed" and corresponding failure information will be displayed in the "Terminal" area. Ensure the accuracy of the WiFi name, password, and that it's operating on a 2.4G network before attempting the configuration process again.

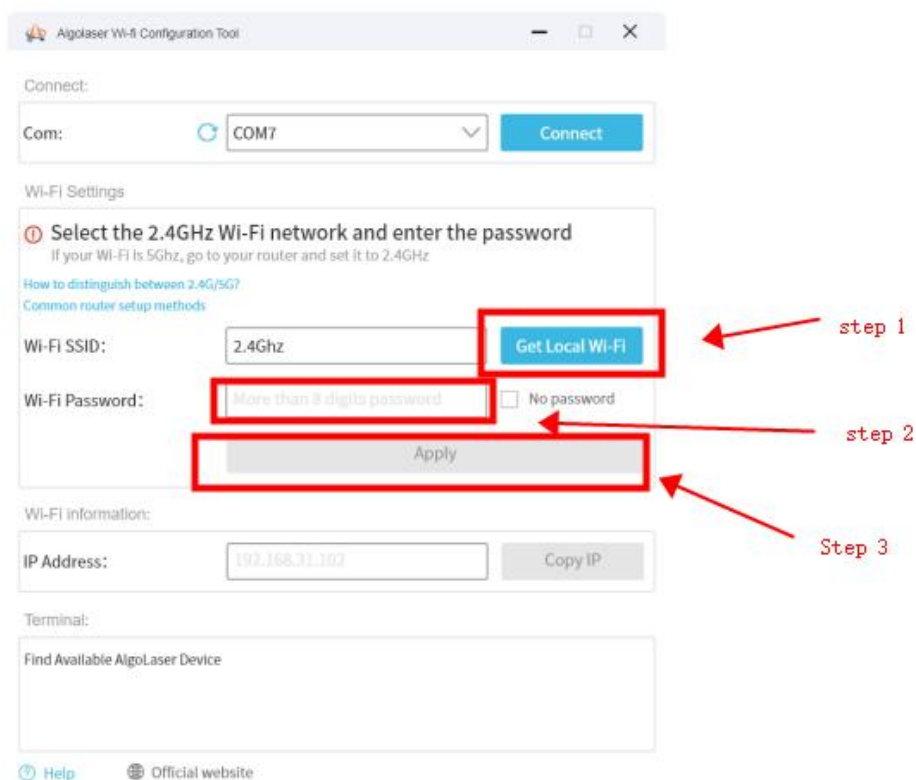


Figure 2

4.4 Assign IP

Provide both dynamic and static IP configuration. The default configuration is dynamic, but static IP can also be set.

4.4.1 Dynamic IP Assignment

After successful network configuration, an IP configuration dialog will appear, with dynamic configuration set as the default. Click the "OK" button to assign an IP address to the Device (refer to Figure 3). Upon successful configuration, a dialog box will prompt "Dynamic IP Configuration Successful."

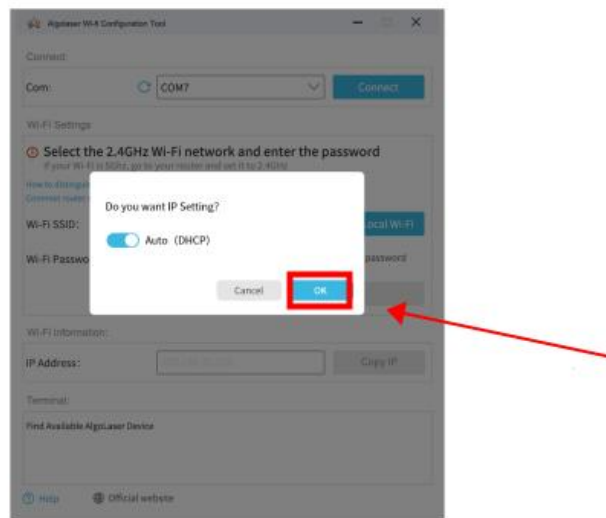



Figure 3

4.4.2 Static IP Assignment:

Click  to switch to the manual IP settings interface (Figure 4), after successful configuration, a pop-up box will appear, indicating that the static IP has been assigned successfully.

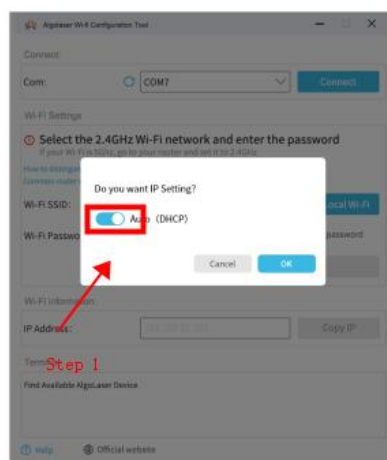


Figure 4

To assign a static IP to the Device, follow these steps: enter the DHCP, IP Mask, and IP Gateway, and click the 'OK' button (Refer to Figure 5). After completing these steps, manually reboot the device.

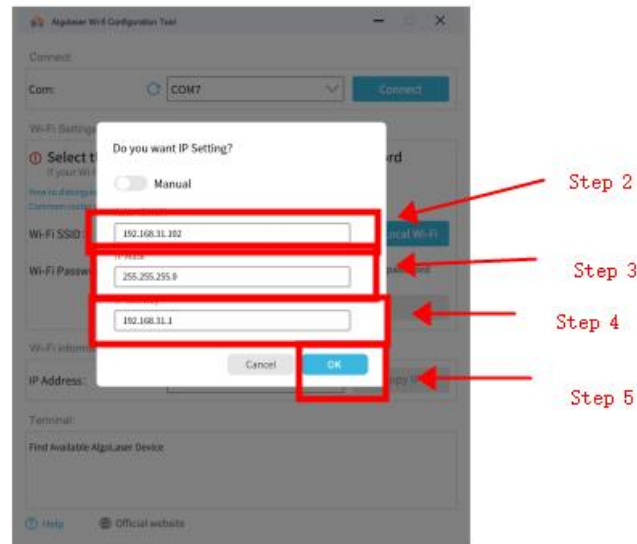


Figure 5

4.5 Copy IP

After successfully setting the IP address, it will be automatically filled in the 'IP Address' input box. Click the 'Copy IP' button to copy the address to the clipboard (refer to Figure 6) and a prompt will appear saying 'IP has been copied'. You can then paste it elsewhere.

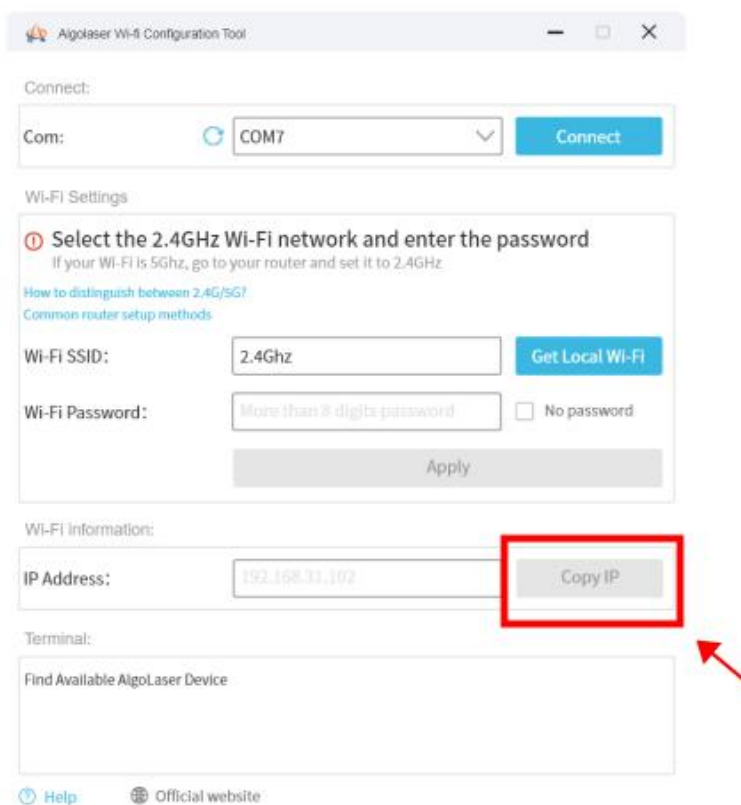


Figure 6

5. Function Introduction

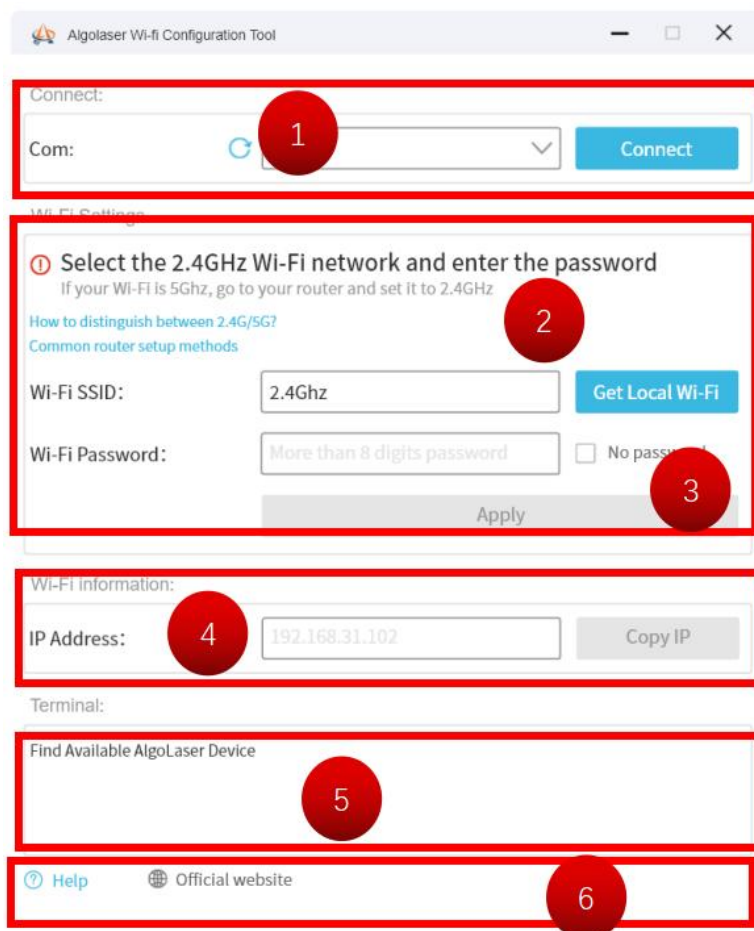




Figure 7

5.1 Connect Devices

Upon opening this tool, it will automatically scan the list of connected serial ports. The current serial port that is being used will be displayed in the list box. To view all connected serial ports, click on the drop-down arrow . Select the Device's serial port and click on the 'Connect' button. If the connection fails, a prompt will appear. If the connection is successful, a prompt will appear indicating the successful connection. If you have not yet connected the serial cable to the computer and the Device, click on the list of serial ports  to scan the list of connected serial ports again.

5.2 Configure WiFi

5.2.1 The WiFi must be of the 2.4G, not 5G.

5.2.2 To obtain the name of the WiFi network your computer is currently connected to, click 'Get Local Wi-Fi'. The input box will be automatically filled.

5.2.3 If the computer is not connected to Wi-Fi, manually enter the Wi-Fi SSID.

5.2.4 Manually enter the corresponding WiFi password or check No Password

5.2.5 To configure the network, enter the WiFi name and password, then click 'Apply'. If the log bar shows a failure, please retry or check the password for accuracy.

5.3 Assign IP

After the connection is established and the configuration of WiFi is completed, an IP Settings dialog box appears automatically for static IP and DHCP setup.

5.3.1 Dynamic IP Assignment

Upon successful connection to the device and Wi-Fi configuration, a pop-up window for IP setup will be displayed. Clicking 'OK' will dynamically assign an IP address to the device by default, as shown in Figure 8.

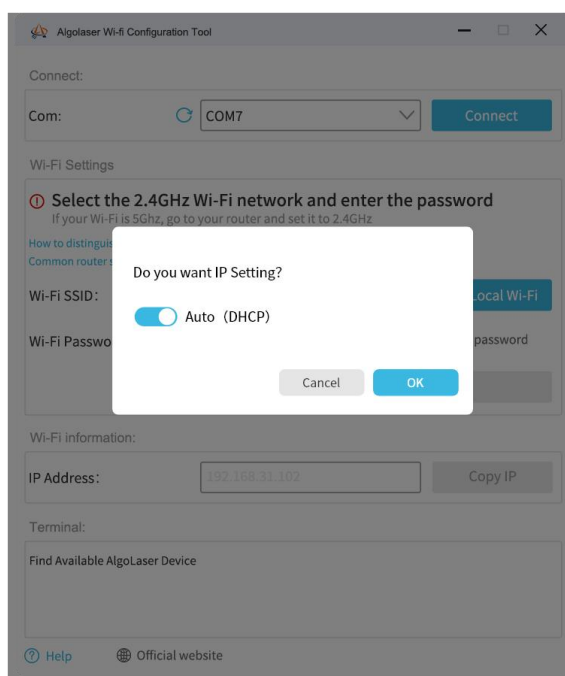


Figure 8

5.3.2 Static IP Assignment

After successful connection to the device and Wi-Fi configuration, a pop-up window for IP settings will be displayed. You will need to manually enter the correct IP address, IP mask, and IP gateway, then click 'OK'. You need to manually reboot the device before assigning the static IP (see Figure 9).

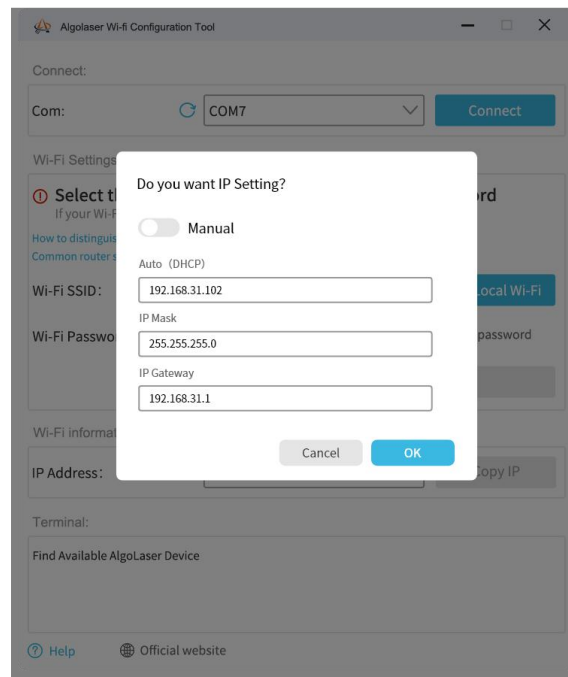


Figure 9

5.4 Obtain Device IP

Once the device is successfully connected, it will automatically obtain the Device's IP address. Click 'Copy IP' to save the IP to the clipboard and paste it to other locations as needed.

5.5 Output Information Area

This area displays information on connected devices, configured networks, and assigned IPs.

5.6 Help Area

5.6.1 Help Guide

Clicking the 'Help' button opens the browser and displays the manual for this tool.

5.6.2 Official Website

Click the 'Official Website' button to open your browser and display the official website.