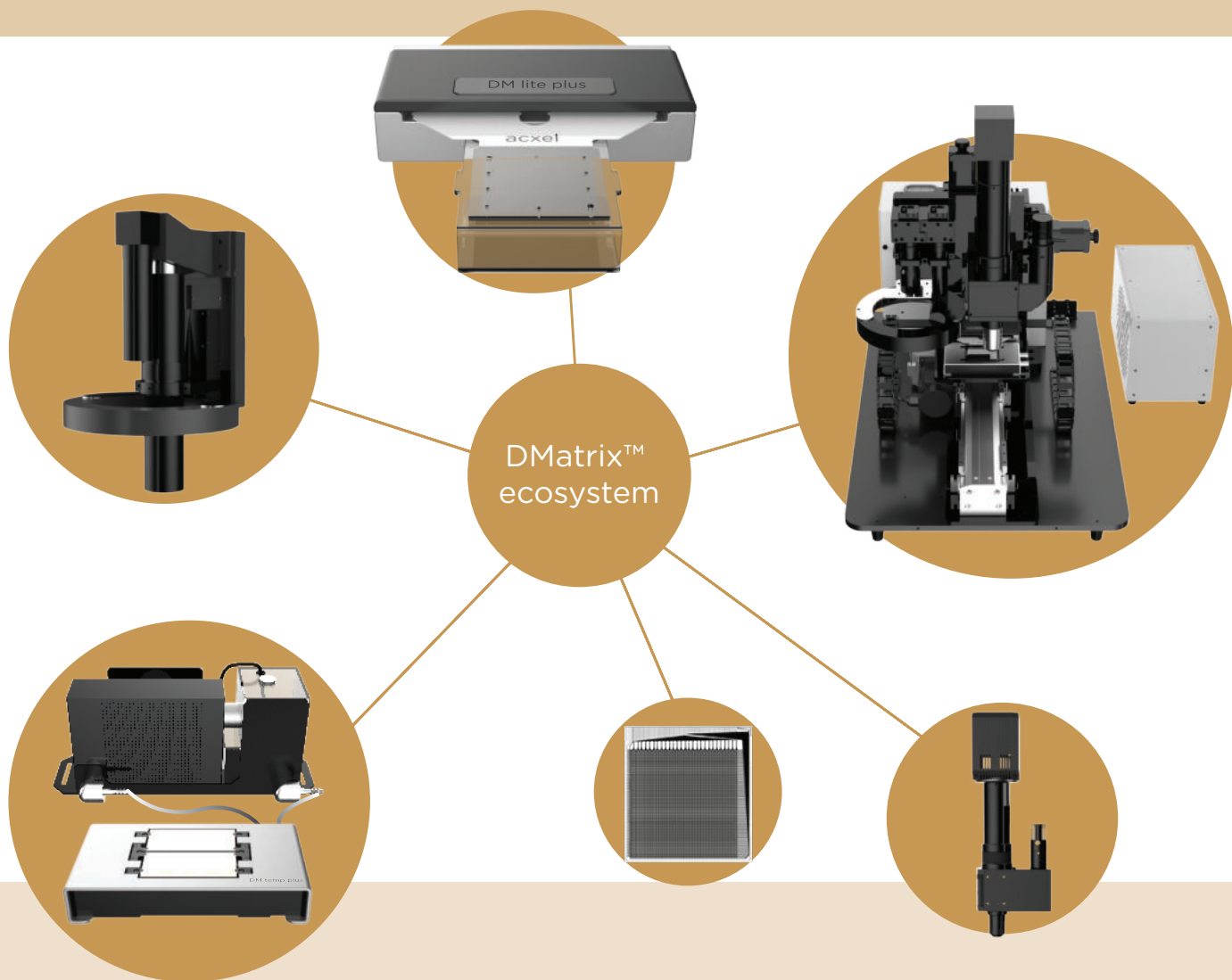


acxel

2024 CATALOGUE

DMatrix™ ecosystem



www.acxel.com

DM sys 2

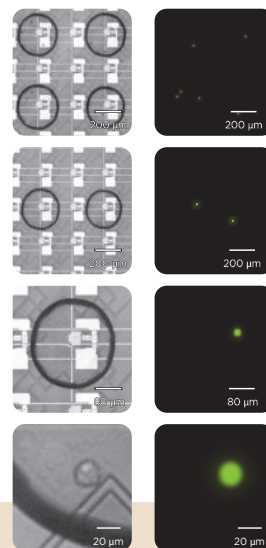
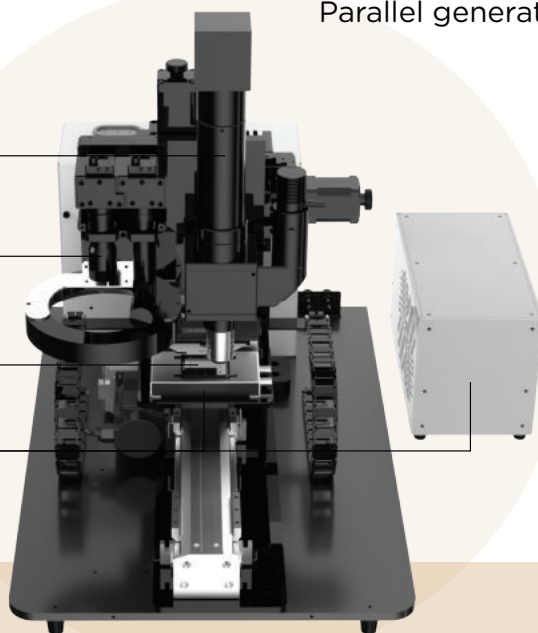
Parallel generation of hundreds of droplets in seconds

DM fl

DM cam

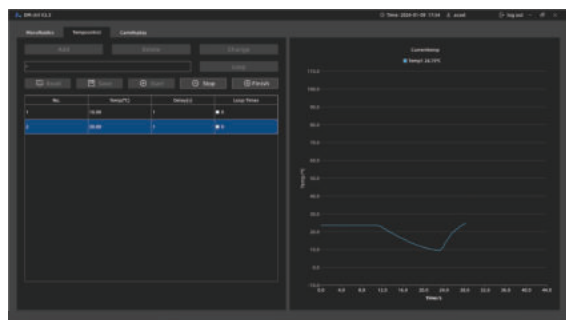
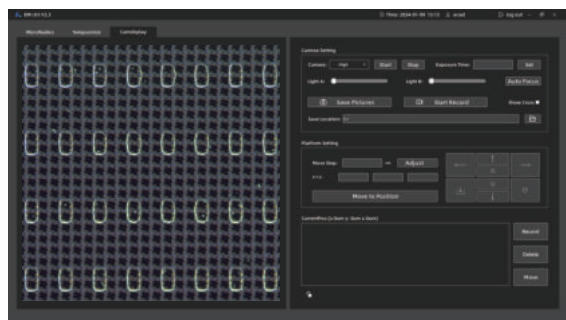
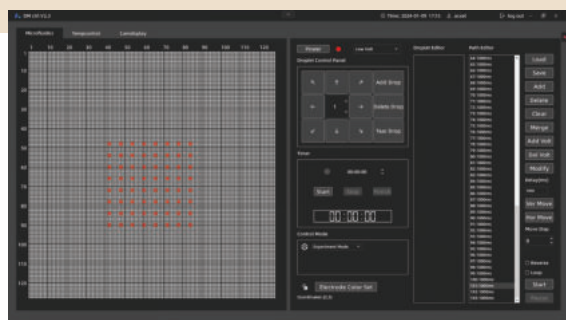
DM lite 16K plus

DM temp plus



Bright Field Dark Field

The DM Sys 2 isn't just a tool - it's a research accelerator for various automated sample prep tasks and complex biochemical experiments. With the DM Ctrl software, it can quickly generate hundreds of microdroplet samples with single cells, allowing easy positioning and control. Users can quickly generate hundreds of microdroplets with single cell precision in seconds.



Overall Dimensions	Weights	Parameters		
		Input Voltage	Temperature Control Range	voltage range
415 mm x 640 mm x 485 mm	35 kg	220 V	4-100 °C	0-60 V

The DM sys 2 seamlessly integrates several functional modules, catering to different sample preparation needs:

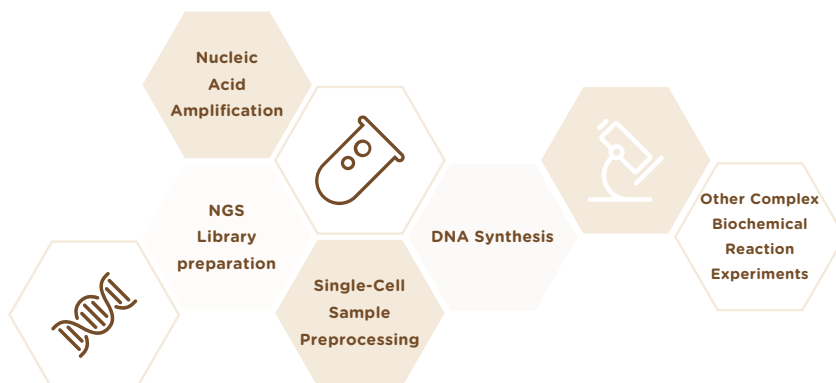
Imaging: Enables real-time visual monitoring, recording and feedback.

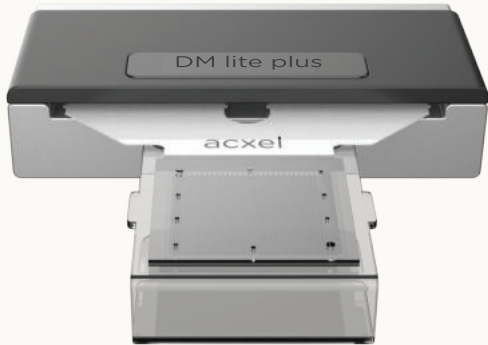
Fluorescence: A high-sensitivity system helps to sort samples by different excitation wave length.

Temperature Control: Provides a wide temperature range from 4-100°C.

Three-Axis Movement: Ensures precise spatial manipulation.

Applications:



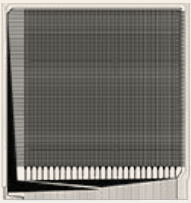


DM lite plus series

Availability: **NOW**

DM lite plus series is a core development board (driver board) of the AMPixel™ biochips. With the DM Ctrl software, it facilitates easy adjustments of drive frame rates and voltage. This series comes with a metal case, safeguards DM lite series from environmental factors and physical damage, ensuring lasting performance, reliability and elegant appearance.

AMPixel™ series biochip



AM16K

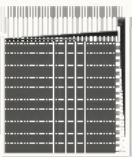
Availability: **NOW**

The powerful AM16K biochip contains 16,384 independently controlled electrodes. This dense electrode array enables precise parallel manipulation of droplets as small as 3 nL and facilitates single-cell manipulation.

User-friendly DIY kit

Availability: **NOW**

TFT substrate



AM16K substrate

FPC



FPC-138PIN

ITO glass



0.7 mm

Double-sided tape

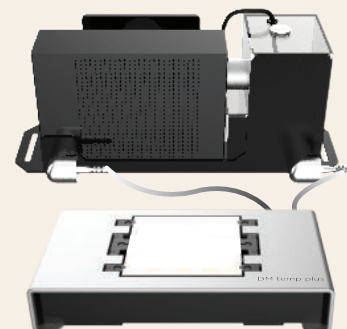


0.05 / 0.1 / 0.2 mm

DM temp plus

Availability: **NOW**

The DM temp plus is designed for direct temperature control of the AMPixel™ series biochips. By utilizing Peltier elements with a water-cooling system, it offers flexible and stable control over a temperature range from 4°C to 100°C.



Biochip Customisation Programme

Custom Glass Products

Welcome to acxel's custom glass services. We offer personalised services with a variety of glass materials and thickness options. Our services include customisation of ITO coatings with different specifications, size customisation and precision drilling to ensure that the custom products align seamlessly with your project. We maintain strict quality control to guarantee glass products with outstanding durability and safety. Our comprehensive and personalised services cater to a variety of needs in experimental functionality.

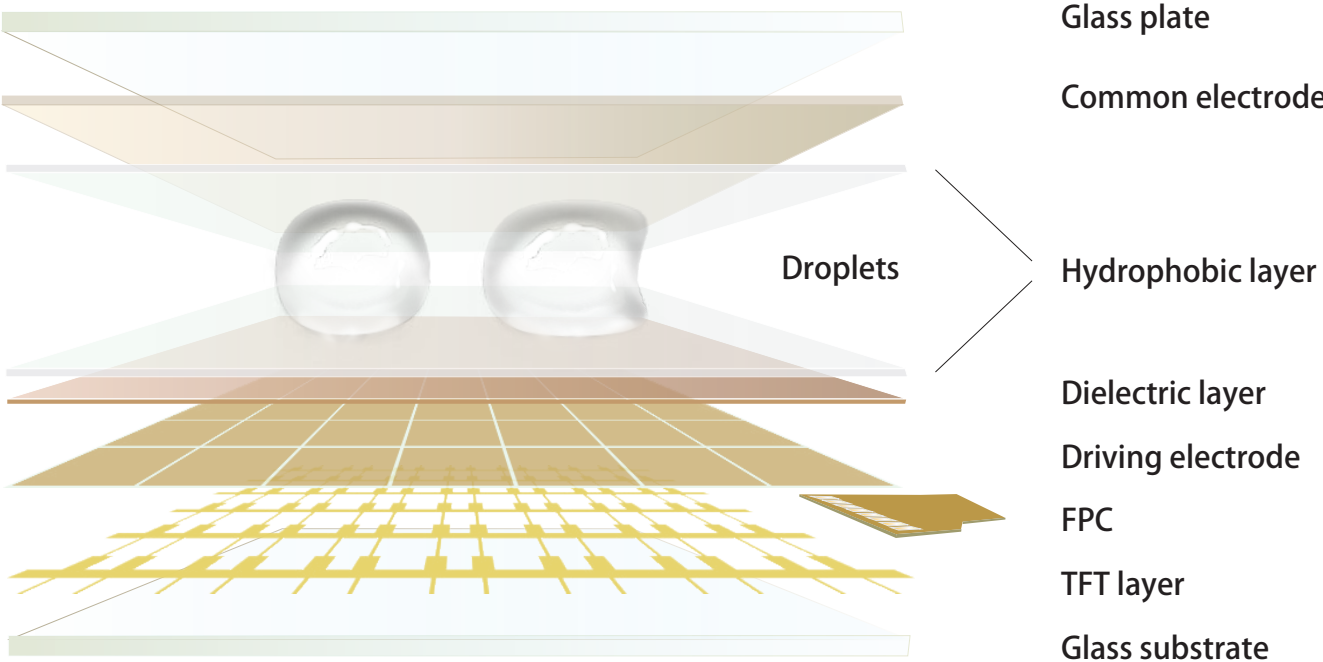
Product	Material	Thickness (mm)	Coating	Sheet Resistance	Note
Corning	Gorilla glass	0.4	\	\	On-demand customisation for size and drilling services
	Gorilla glass	0.5	\	\	
	Gorilla glass	0.7	\	\	
	Gorilla glass	1.1	\	\	
	Gorilla glass	2	\	\	
	Eagle XG glass	0.5	\	\	
Changxin	Soda-lime glass	0.55	ITO (350±30nm)	3-5 Ω / □	
	Soda-lime glass	0.7	ITO (350±30nm)	3-5 Ω / □	
	Soda-lime glass	1.1	ITO (350±30nm)	3-5 Ω / □	
	Borosilicate glass	0.7	ITO (350±30nm)	3-5 Ω / □	
	Borosilicate glass	1.1	ITO (350±30nm)	3-5 Ω / □	

Reagents, Consumables and Accessories

To better meet your needs, we offer a comprehensive service for the reagents, consumables, and accessories required for our complementary products. This service aims to streamline your laboratory work, making it easier for you to obtain the necessary materials. We are committed to providing you with high-quality, reliable product support, facilitating smoother progress in your research endeavours.

	Product	Product No.	Specification
Reagents	Tetronic 90R4	SF-T1-10	10 ml
	Poloxamer 188-F68, 10%	SF-P1-1/10	10 ml
	Pluronic F-127, 10%	SF-P2-10	10 ml
	Tween 20	SF-T2-1/10	10 ml
	Amorphous fluoropolymer (AF)	CS-T1-01	5 g
Consumables	Solvent for AF	CS-T1-02	1 ml
	AF solution, 1%	CS-T1-1/10	100 ml
	Medium oil	CS-C1-01	5 ml
	Medium oil - scp	CS-C2-01	5 ml
	AM4K substrate	CS-S1-01	10 pcs
	AM16K substrate	CS-S1-02	10 pcs
	Accessories	Flexible printed circuit (FPC), 138 pin	AC-F-01
Flexible printed circuit (FPC), 299 pin		AC-F-02	10 pcs
Chip top plate, 0.7mm		AC-P-01	10 pcs
Anti-adsorption sampling tube		AC-T-01	10 cm
Sampling kit		AC-S-01	1 pc
Pipette, 0.1-2.5 uL		AC-P-1/10	1 pc
Pipette, 0.5-10 uL		AC-P-5/10	1 pc
Pipette, 2-20 uL		AC-P-2	1 pc
Pipette, 20-200 uL	AC-P-20	1 pc	

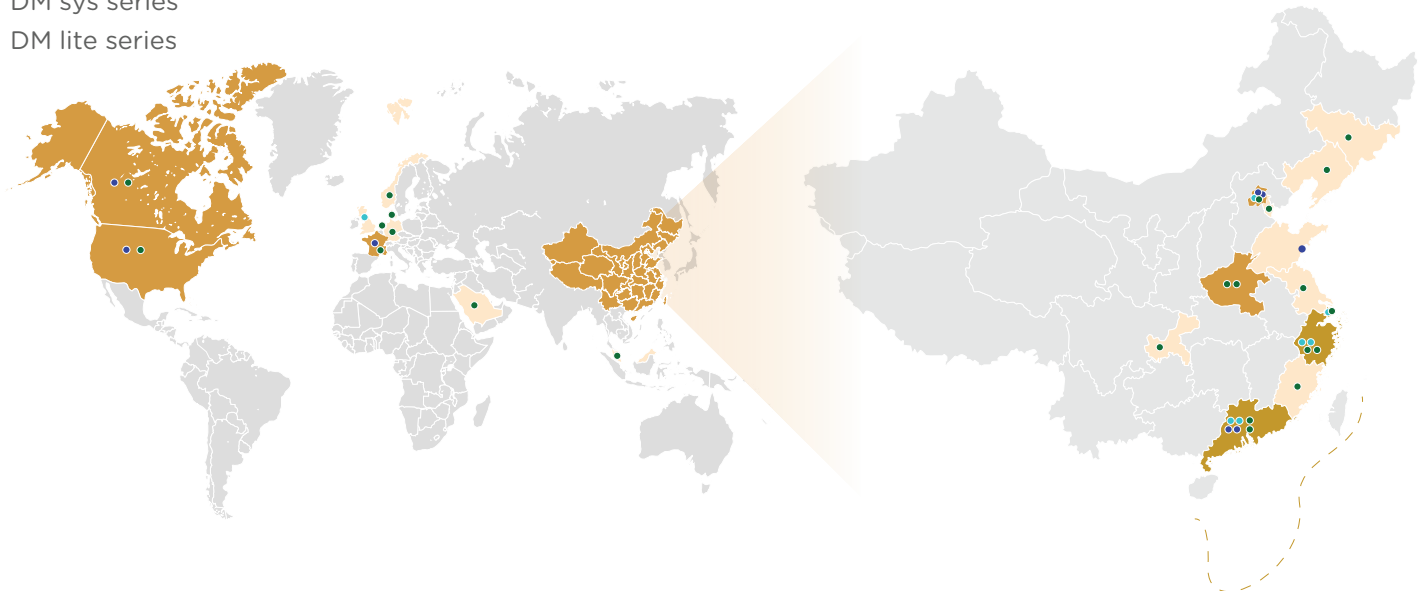
Biochip Customisation Programme



Biochip Customisation Programme

For users who want a particular spec of the biochip including but not limited to the outline, resolution, top plate design, connector type, TFT circuit, driving system, etc. We provide customised services throughout the entire process from biochip design to prototype verification and mass production. All you need to do is just a call or email message, tell us your thoughts, and then leave the rest to us.

- BOXmini™ SCP
- DM sys series
- DM lite series



define the future lab

Follow us



X (Twitter)



store.acxel.com



LinkedIn



WeChat



WeChat Official Accounts



ACXEL Micro & Nano Tech Co., Ltd.
Building B1, Xing Zhong Chuang Centre, Foshan City, Guangdong, China



ACX Instruments Ltd.
St John's Innovation Centre, Cowley Road, Cambridge, CB4 0WS, United Kingdom



contact@acxel.com