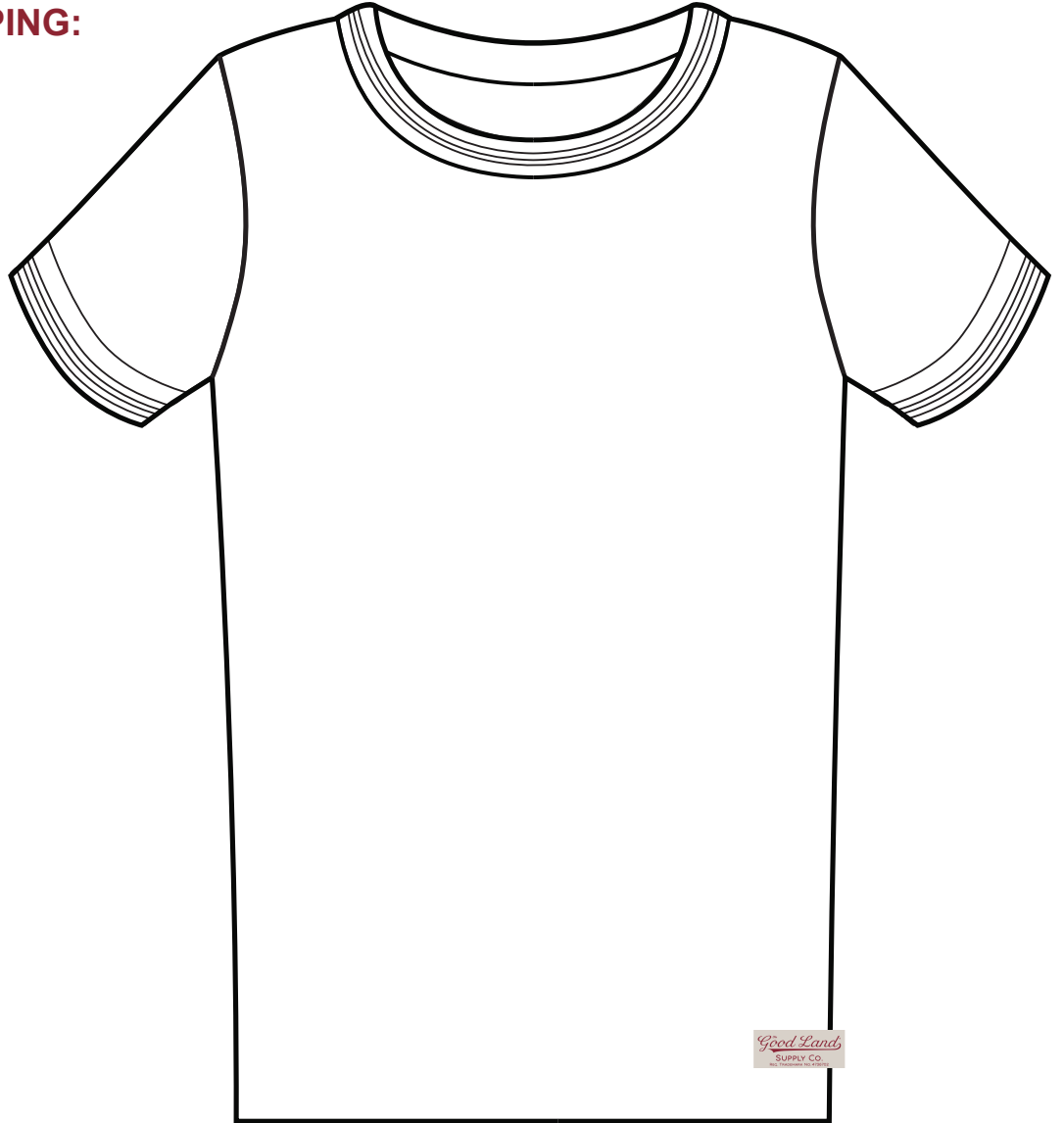


LADIES FRANKIE RINGER

COLLAR & SLEEVE PIPING:
STRETCH FABRIC

BODY:
JERSEY FABRIC

HEM STITCHING:
MATCHES PIPING
& COLLAR COLOR



JERSEY FABRIC & RIB FABRIC

Pink	Ballet Pink	Light Pink	Dusty Pink	Carnation	Coral	Red	Fuchsia	Strawberry	Orange	Rusty	Copper	Chocolate	Cantaloupe	Gold	Light Yellow	Grass	Kelly
Olive	Army	Avocado	Turquoise	Sky	Storm	Aqua	Ocean	Light Navy	Royal	Solid Navy	Lavender	Coconut	Purple	White	Heather Grey	Sugar	Warm Grey
Solid Charcoal	Black	Bright Yellow	Brown	Slate	Ivory	Silver	Forest	Dark Heather Charcoal	Heather Grape	Heather Navy	Heather Wine	Black-wash	Heather Charcoal	Natural	Dark Heather Gray	Chili	Lead