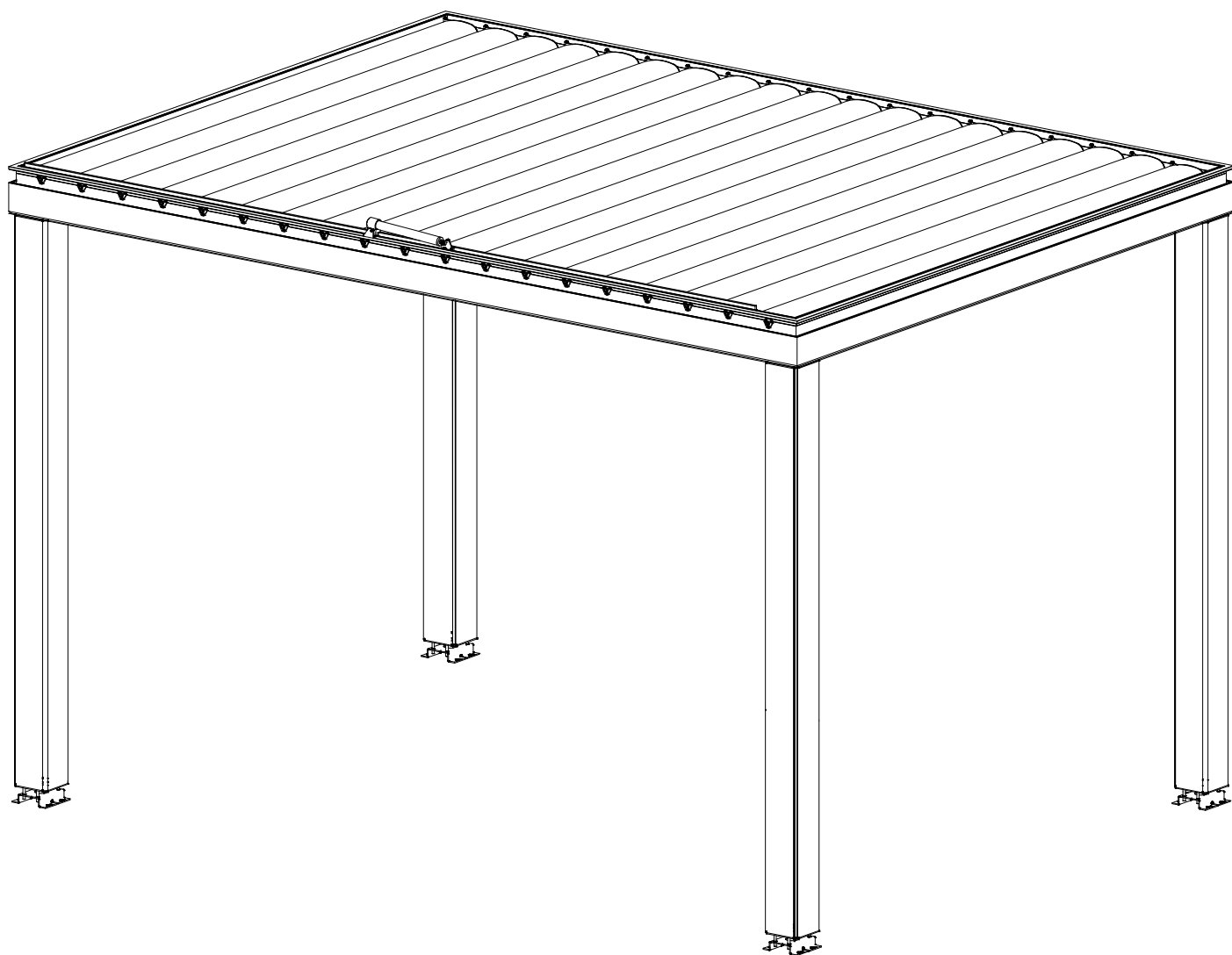


Customize your pergola

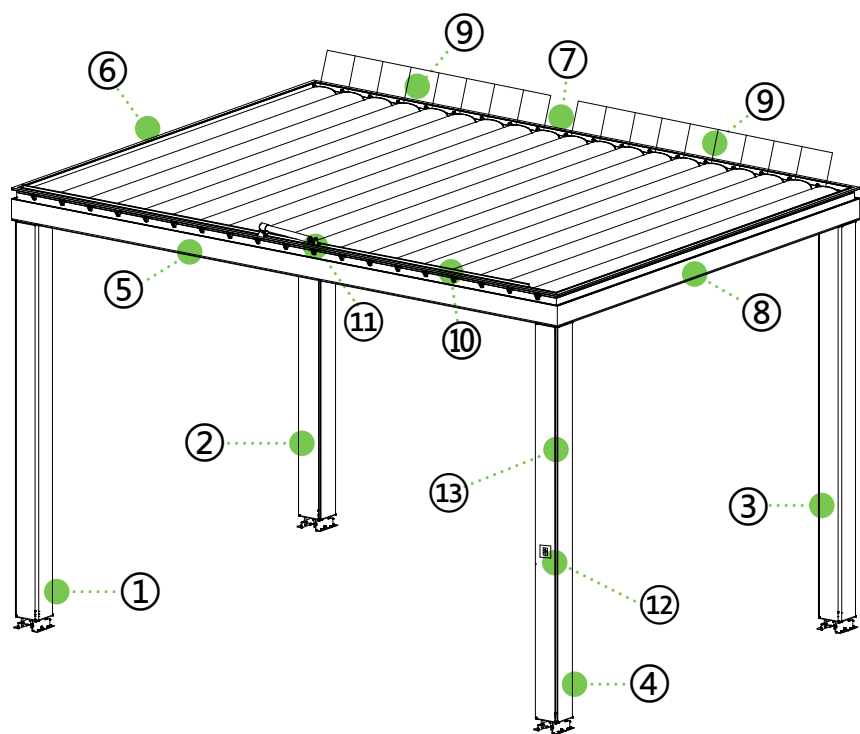
220 MOTORISED PERGOLA INSTALLATION MANUAL



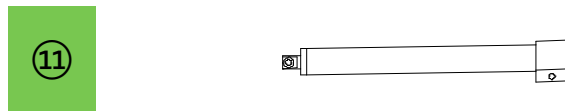
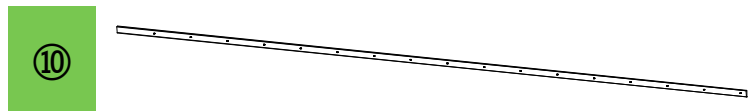
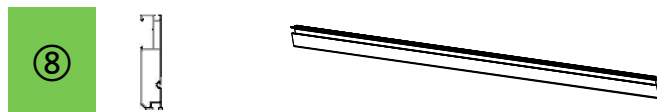
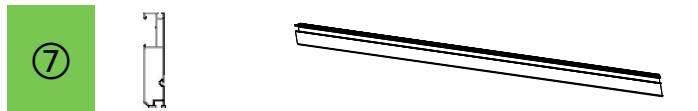
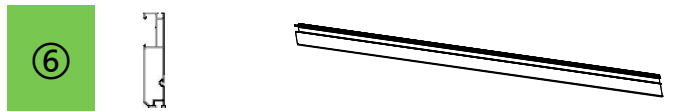
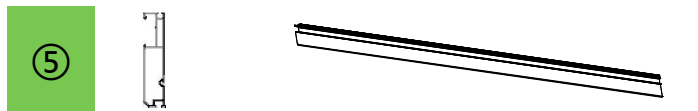
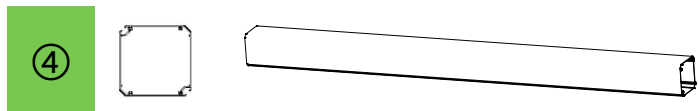
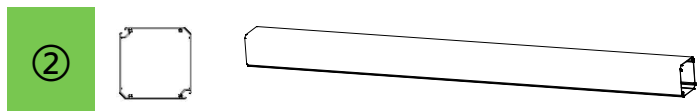
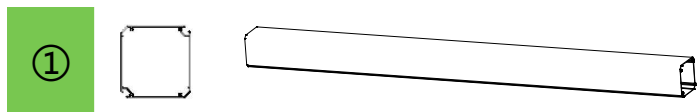
Please read the installation manual carefully to avoid any problems

All the Best!

Profiles



- ① Column
- ② Column
- ③ Column
- ④ Column
- ⑤ Beam
- ⑥ Beam
- ⑦ Beam
- ⑧ Beam
- ⑨ Blade
- ⑩ Transmission Rod
- ⑪ Motor
- ⑫ Switch Panel
- ⑬ Column cover plate



1. Hardware Accessories

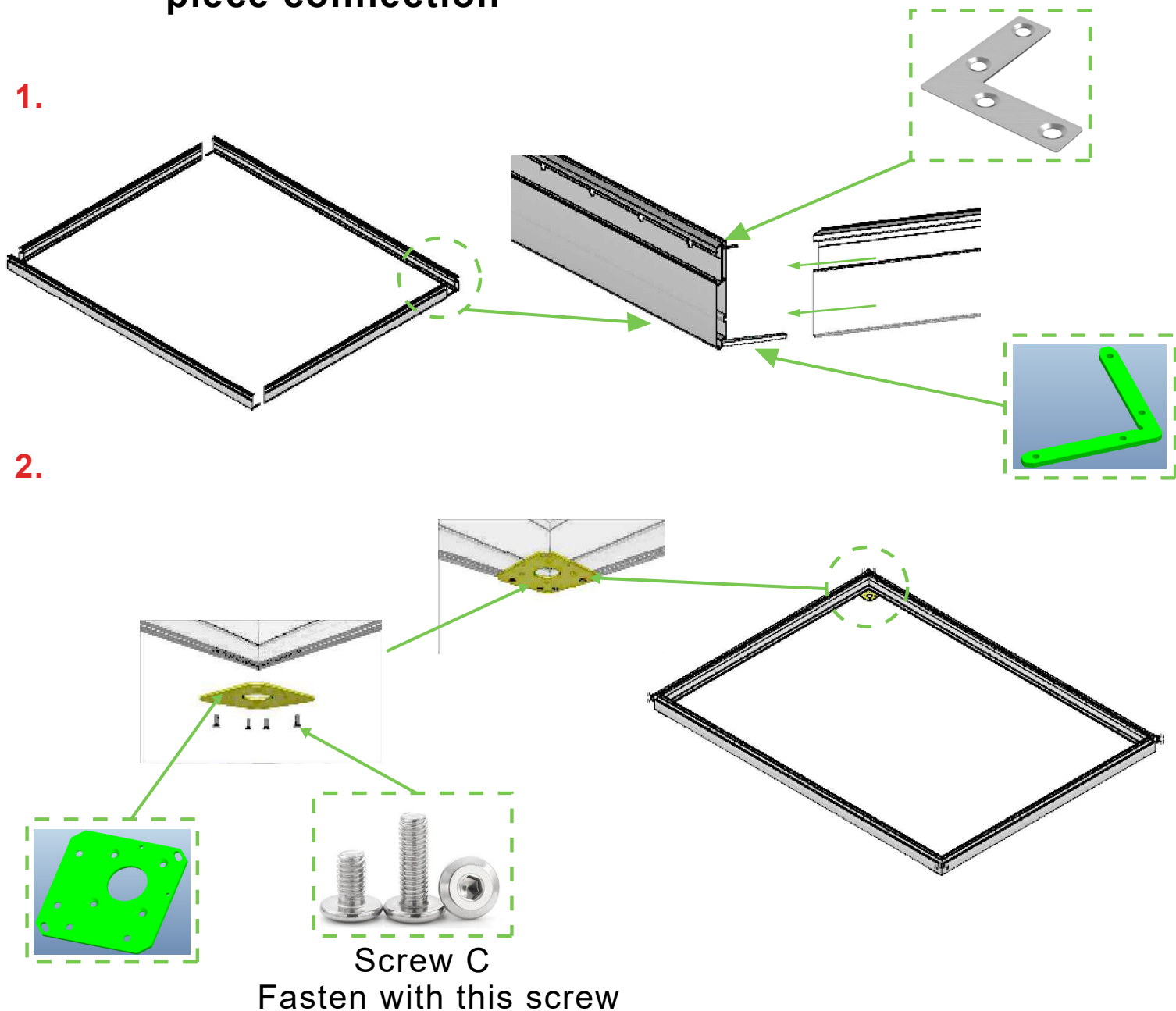
Post Bolts		A	Motor Base Screws		J
Column Bottom Screw		B	Connecting Rod Linkage Screw		K
Column Top Screw		C	Connecting Rod Plug Hitting Screw		L
Column Screw		D	Blade Rotation Axis		M
Sink Iron Angle Screw		E	170 Column Base A		N
Locking Sink Screws		F	170 Column Base B		O
Blade Rotation Axis Fixed Screw		G	170 Column Connecting Plate A		P
Plastic Base Screws		H	170 Column Connecting Plate B		Q
Connecting Rod Plug Hitting Screw Gasket		I	220 Side Beam L Pieces		R

2.Prepare tools & install

*Prepare tools

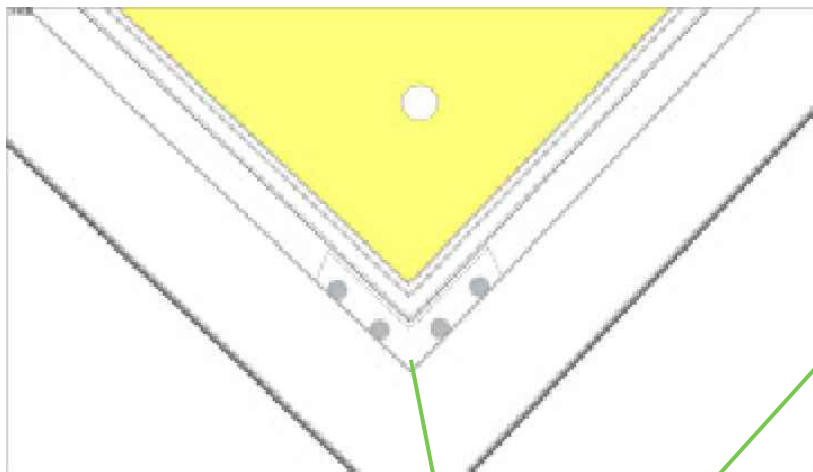
- 1.Hand drill, cross wind drill 2, impact drill, Ø12mm impact drill bit 1, 8mm and 13mm open plate hand each 1 (motor connection blade and pull burst screw fixed with)
- 2.8 inch or 10 inch aluminum cutting machine (cut column cover with) hammer, infrared measuring instrument level ruler. In addition and then according to the site environment must be prepared: scaffolding or man ladder

*Step 1: Assembly of side beams and column connection piece connection



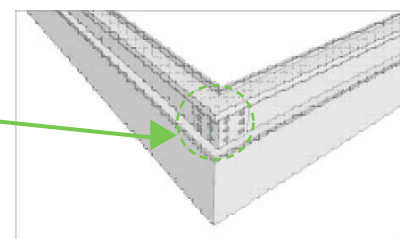
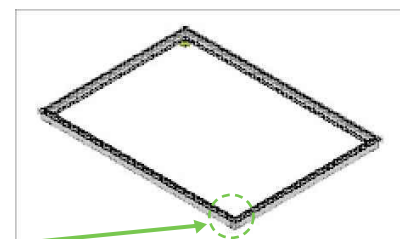
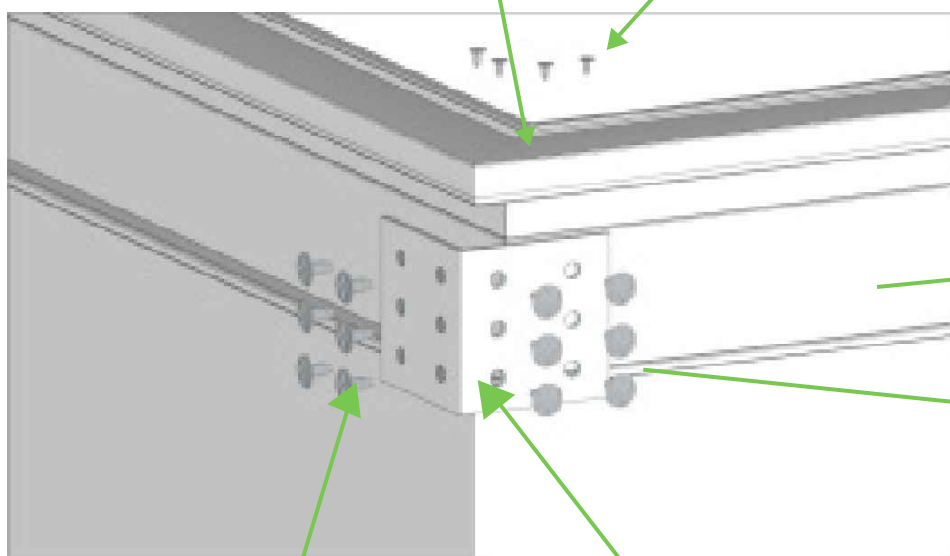
3. Installation step 1

3.

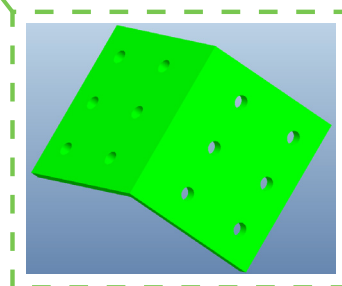


Screw E

Fasten with this screw

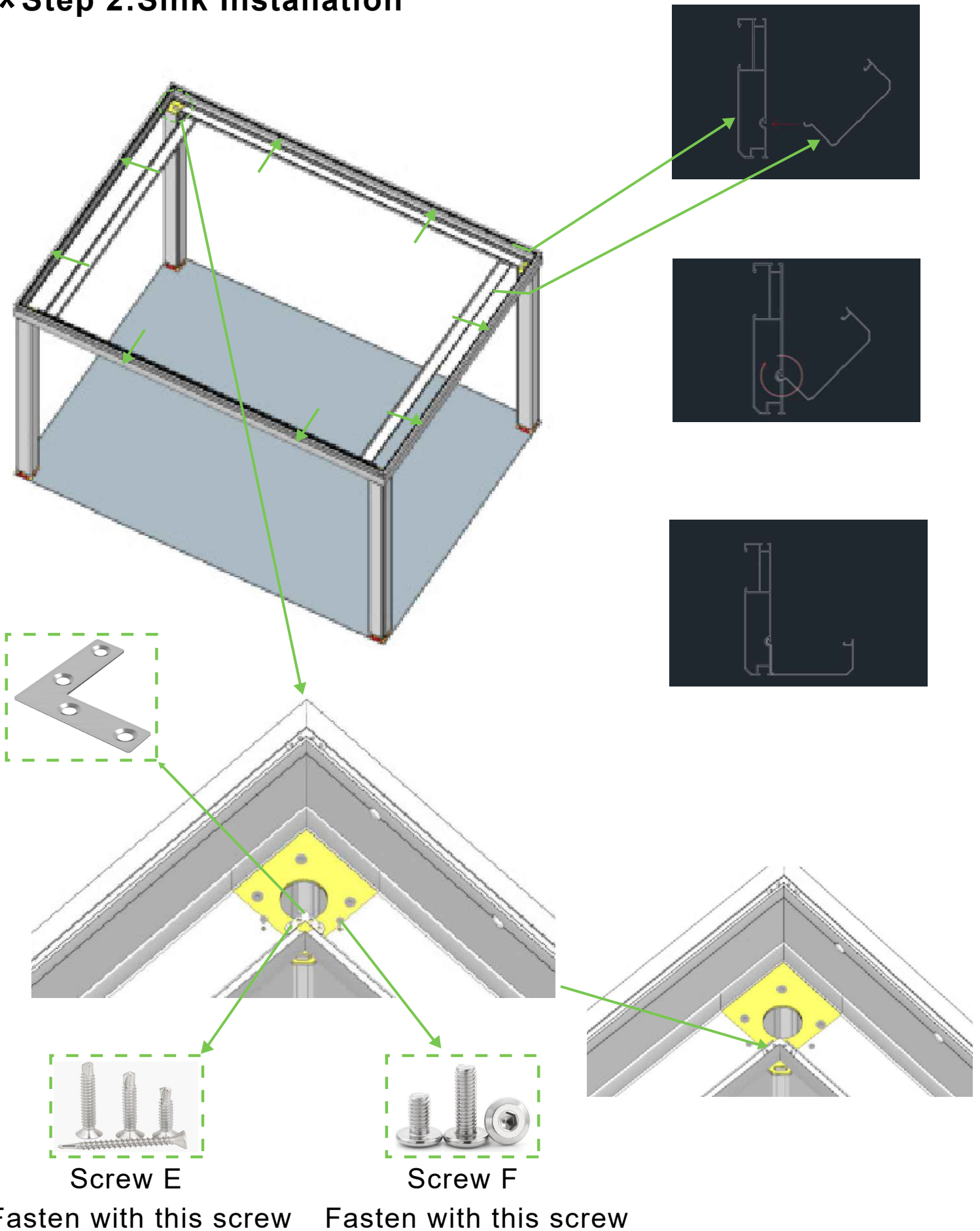


Fasten with this screw



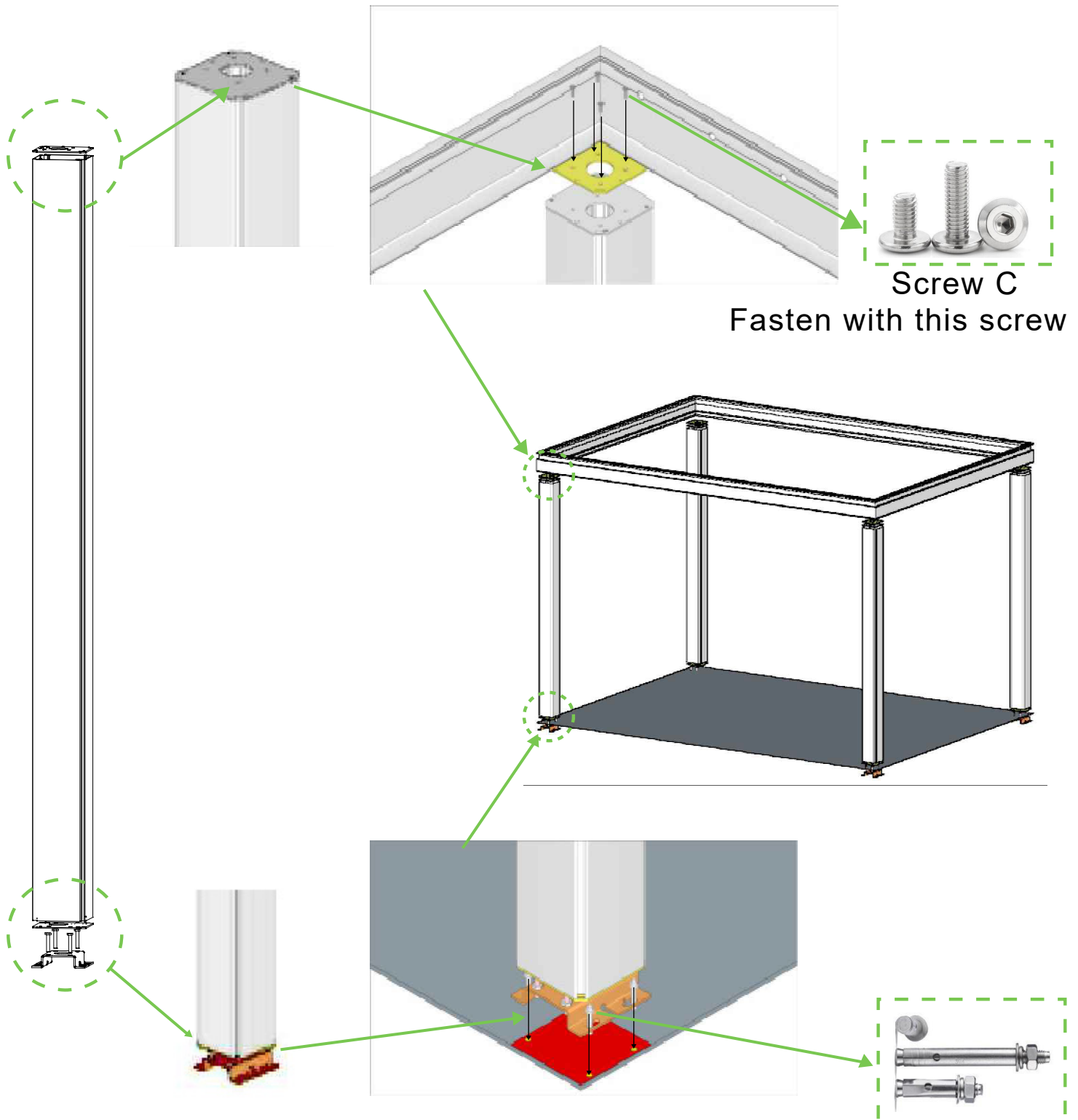
4. Installation step 2

*Step 2: Sink Installation



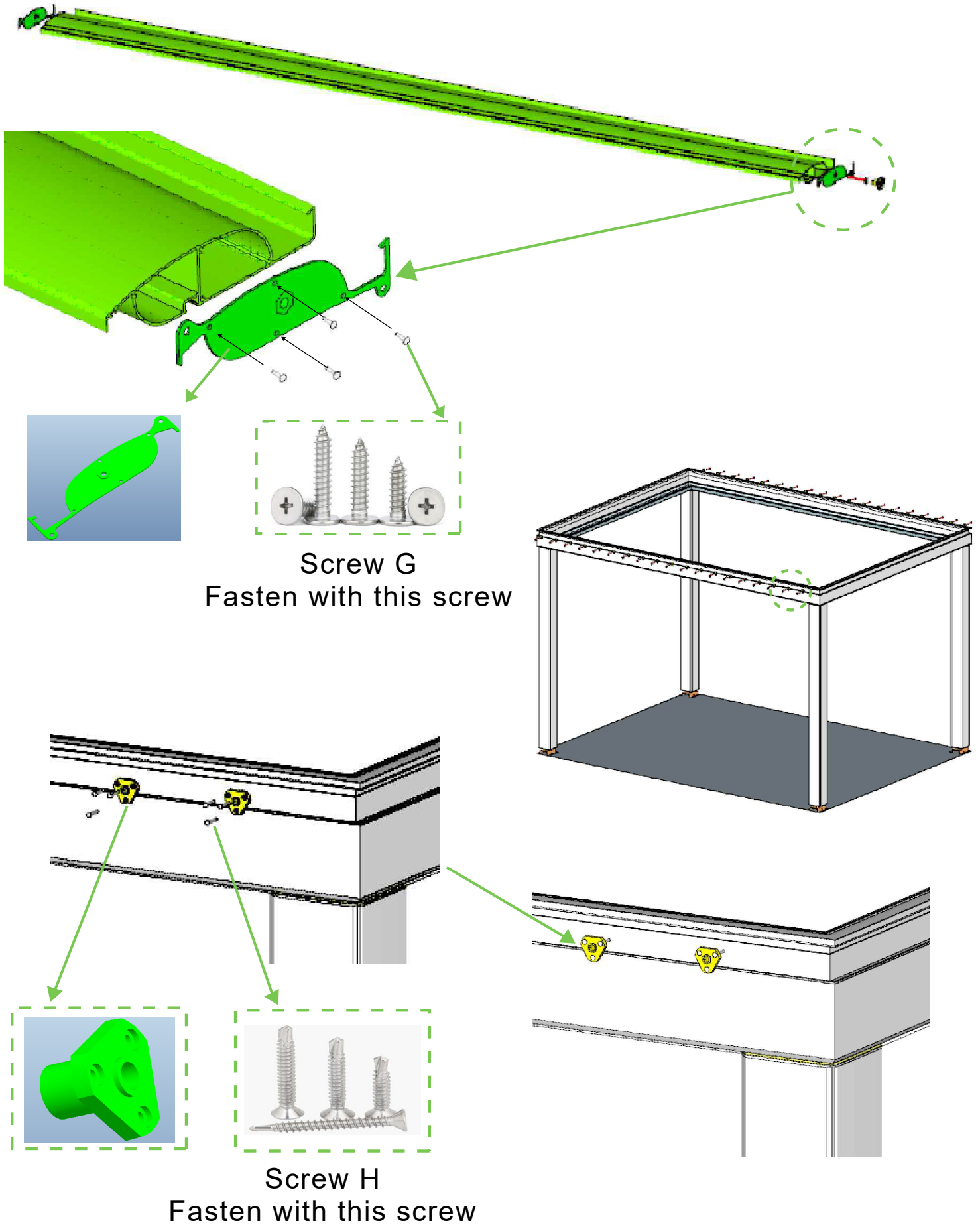
5. Installation step 3

***Step 3: Column and column base and column connector and side beam assembling**



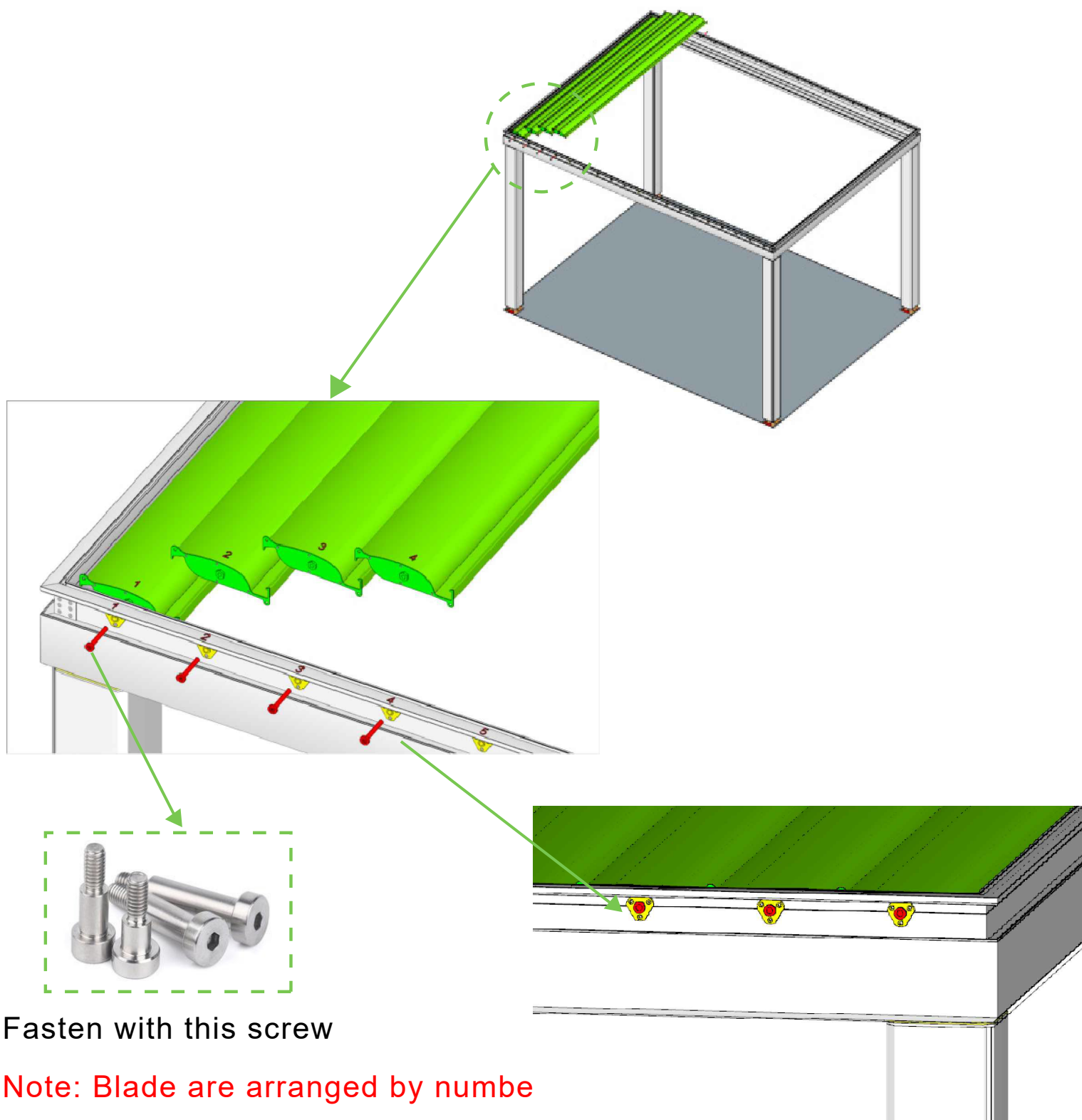
6. Installation step 4

*Step 4: Assembled blades



6. Installation step 5

*Step 5: Blade fixation



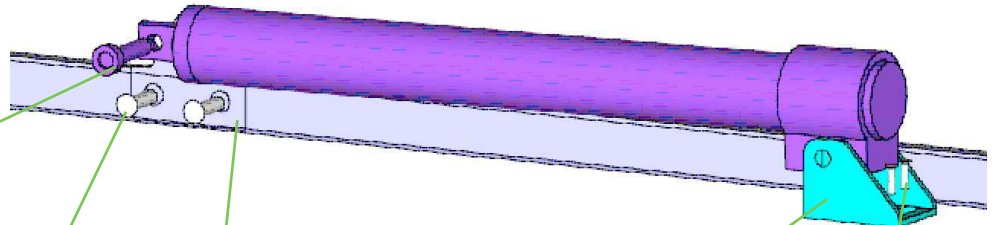
7. Installation step 6

***Step 6: Blade and linkage rod connection fixed**



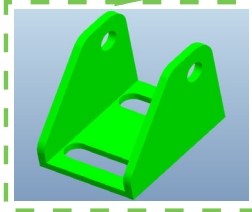
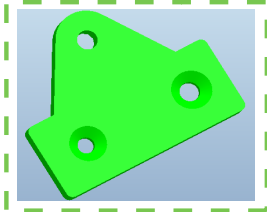
Screw L

Fasten with this screw



Screw K

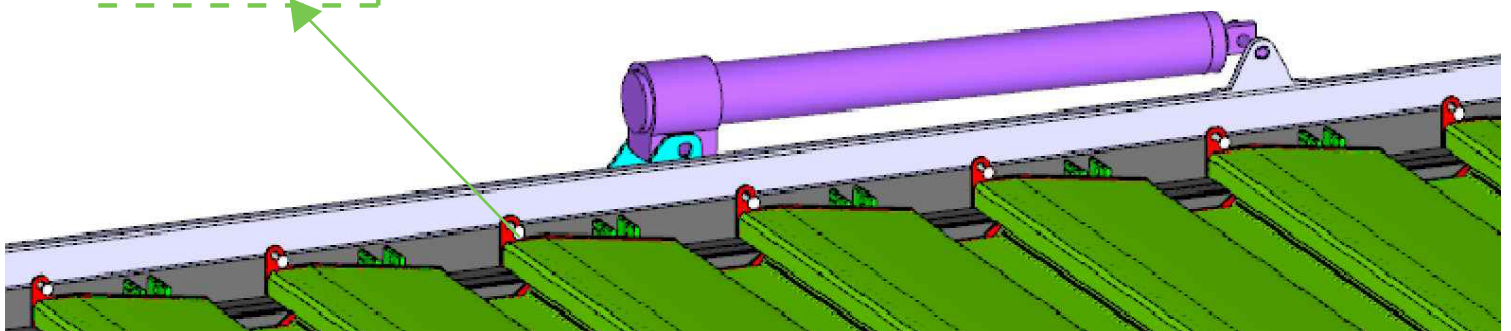
Fasten with this screw



Screw J

Fasten with this screw

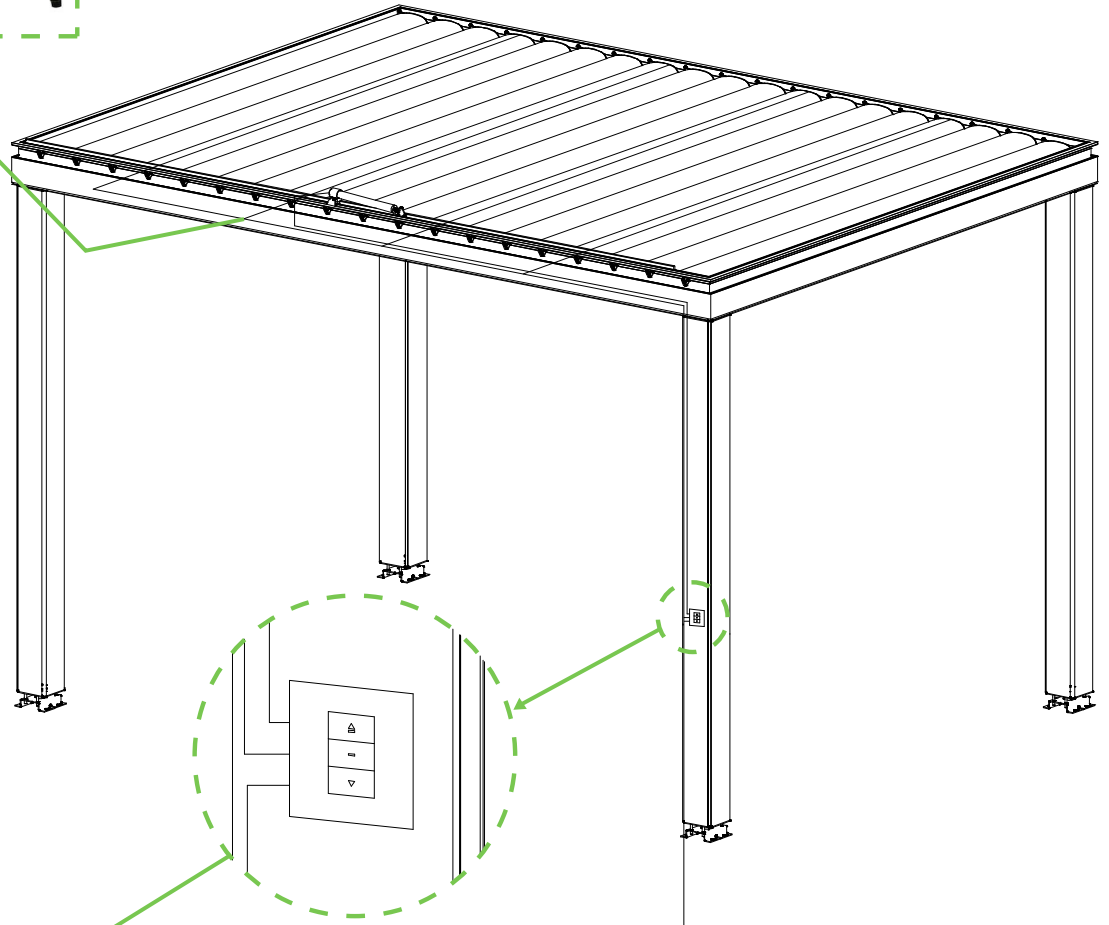
Fasten with this screw



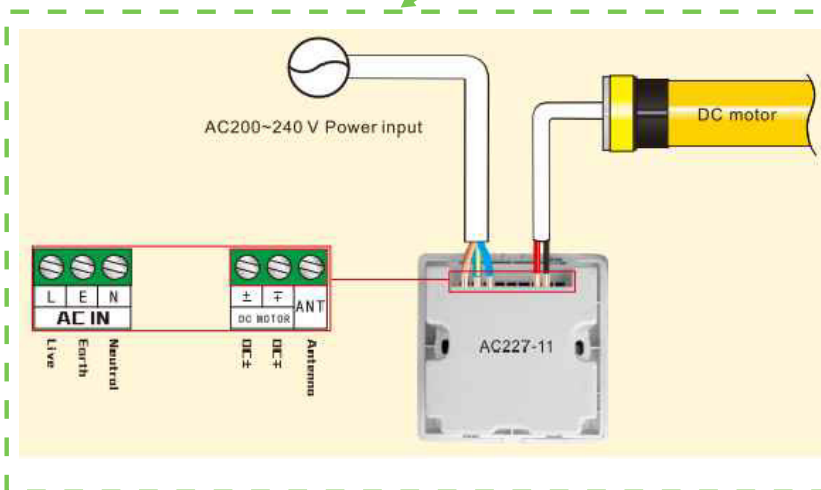
8. Installation step 6

*Step 6: Line connection and commissioning completed

Light band connector



Power supply



Motor controller light with receiver wiring schematic

Completed

