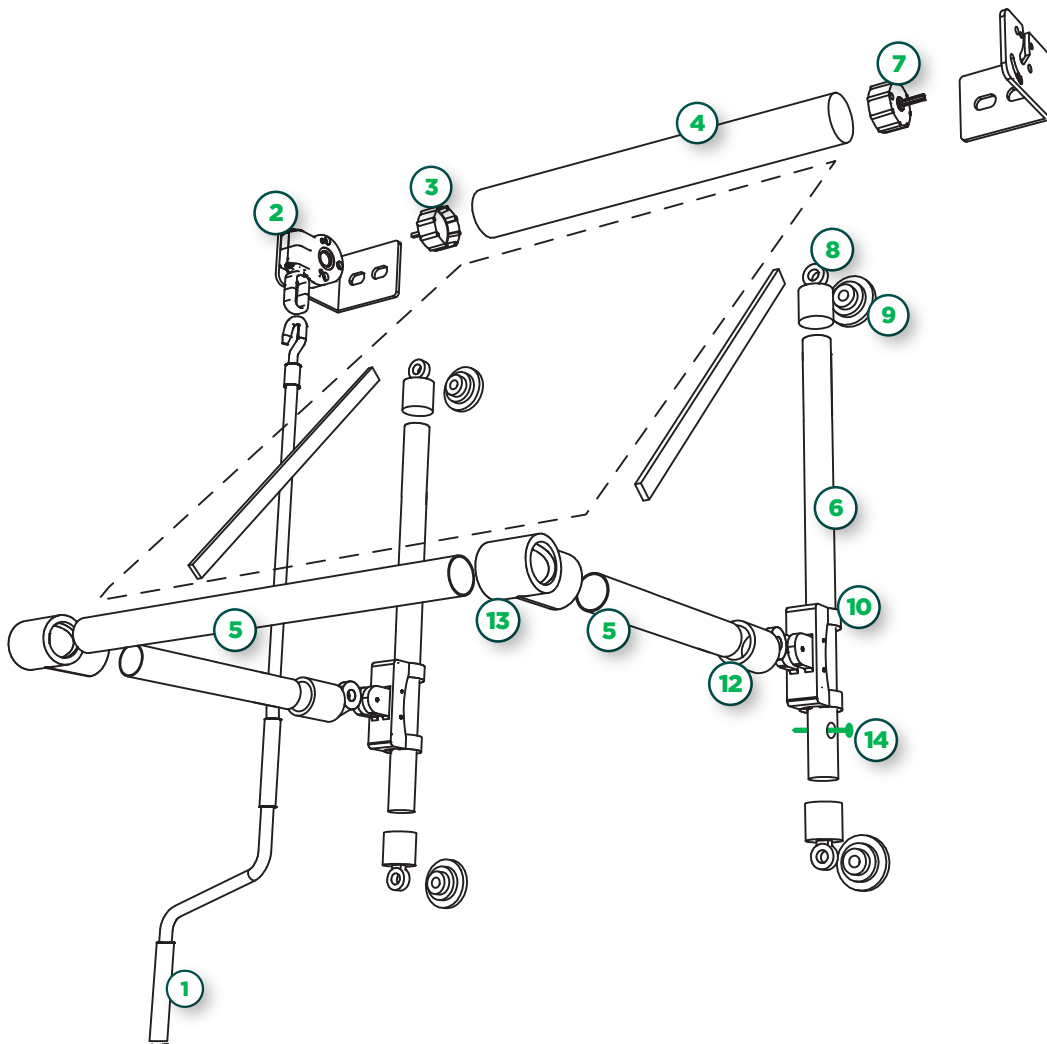




BRAZO CON CORREDERA



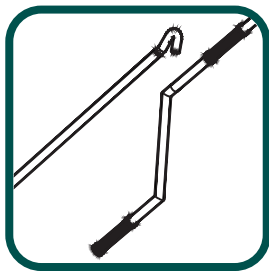
» Brazo con Corredera Despiece



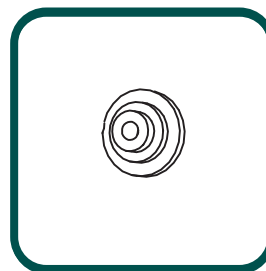
Componentes

- | | | | |
|----------|-------------------------|-----------|--|
| 1 | Manija | 8 | Terminal de coliza |
| 2 | Máquina polifuncional | 9 | Roseta común |
| 3 | Puntera Cuadrada 2" | 10 | Corredera |
| 4 | Caño Galvanizado 2" | 11 | Terminal de brazo |
| 5 | Caño Galvanizado 1 1/4" | 12 | Horquilla T |
| 6 | Caño Galvanizado 1" | 13 | Para darle inclinación al toldo, hacemos una perforación en el caño con un pasante, para que funcione como tope. |
| 7 | Puntera redonda 2" | | |

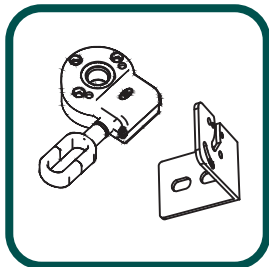
» razo con Corredera Componentes



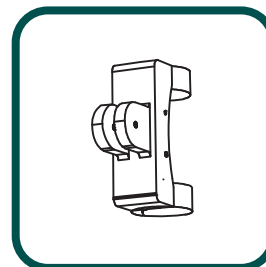
1 Manija



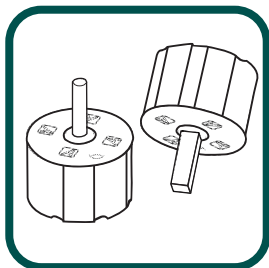
9 Roseta común (x4)



2 Máquina Polifunconal c/escuadra



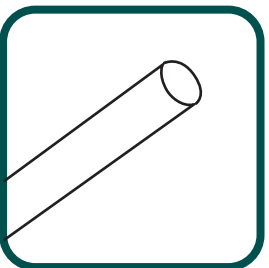
10 Corredera (x2)



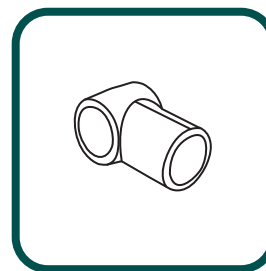
3 Puntera cuadrada
7 Puntera redonda



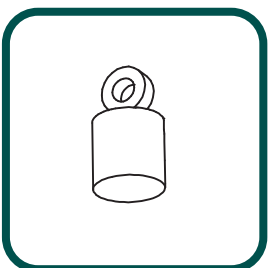
11 Terminal de brazo (x2)



4 Caño galvanizado 2", 1 1/4", 1"



12 Horquilla T (x2)



8 Terminal de coliza (x4)



www.printemps.com.ar