









# 60W LED BALLOON LIGHT KIT

VT-60-G2

**7,800 LM**  
**5,000 ft<sup>2</sup>**



-  HIGH LUMEN OUTPUT OF 7,800 LM
-  CARRY BAGS INCLUDED
-  MULTIPLE MOUNTING OPTIONS INCLUDED
-  6FT / 2-STAGE ADJUSTABLE MAST
-  RF REMOTE DOZENS OF SETTINGS
-  ADAPTER SUPPORTED FOR EASY AND SECURE ATTACHMENT
-  POWER MULTIPLE UNITS BATTERY PACK
-  360 DEGREE GLARE FREE DIFFUSED LIGHT



## ACCESSORIES



## SPECIFICATIONS

Fixture Design	Modular 8 Sided + Top Panel
Total Wattage (W)	60W
Voltage (V)	AC 110-240V
Frequency (Hz)	50/60 Hz
Operating Amps (A)	0.5A
Spec   LED Wattage (W)	Samsung   60W
Luminous Flux (Lumen)	7,800 Lumens
Color Temperature (Kelvin)	5,000K
Color Rendering Index (CRI)	>80
Lamp Life (Hrs)	50,000 Hrs

## DIMENSION & WEIGHT

Diffuser Inflated (L"x W"x H")	14x14x7 (70x70x50 cm)
Fixture Weight	6 lbs (2.72 kg)
Fixture (L"x W"x H")	7x7x10 (17x17x25 cm)
Power Cable	15' ft (457 cm) <small>SJOW 3*18 AWG CORE G US Stnd Plug</small>
Tripod Dimensions (Collapsed)	34 in. (86 cm)
Tripod Dimensions (Extended)	79 in. (200 cm)
Tripod Weight	7.1 lbs (3.2 kg)
Tripod Footprint (L"xW"xH")	31x31x78 (79x79x198 cm)
Ingress Protection	IP44
Safety Certifications	UL, CE, FCC, RoHS

# COMPERATIVE ANALYSIS



## CONVENTIONAL ASTRING LIGHTS

VS

## VOLTERREX 60W LIGHT



500 watts ≈ home diswasher	100%
Yearly fuel cost to power	\$833
8,000 Lumens	
11 mins to install	\$958
Plastic cage	YES
	NO
5 light bulbs	\$233

POWER CONSUMPTION

12% 60 watts ✓

ELECTRIC FUEL COSTS

99% Exponential fuel savings ✓

UNIT ILLUMINATION

7,800 Lumens 360° diffused soft light +only 2% less lumen output

INSTALL LABOR COSTS

\$112 Fast ROI & quick install in just 1 min! ✓

IMPACT CAGE

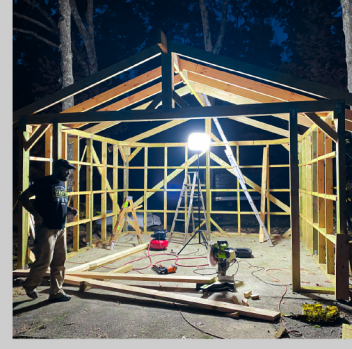
YES 360° metal cage w/rust resistant coating ✓

REMOTE CONTROL

YES Install fixture anywhere or out of reach with remote on/off & 10-100% dimmable ✓

PRICE

\$229 1 light fixture w/c-clamp ✓



## 60W LIGHT KIT POLAR LIGHTING DIAGRAM

Ground Coverage of Illumination: Footcandles/Lux (fc/lx) vs. Distance (ft)



0ft 5ft 7.5ft 12.5ft 15ft

15 fc 150 lx 10 fc 100 lx 5 fc 50 lx 3 fc 30 lx



## CONTACT Volterrex powered by ISM Lighting

866-765-VOLT www.volterrex.com info@ismlighting.com

300 Wampanoag Trail, Riverside, RI 02915

