

LED LIGHT CART

VT-LC-G1

VOLTERREX
Powered by ISM Lighting



LED LIGHT CART

700W KIT | 102,000 LUMENS

VT-LC-G1

Volterrex Light Cart series are ideal for longer term use applications. Our Light Cart is equipped with wheels steering column and stainless steel mast up to 18ft. Light Portable & Lightweight

ECONOMICAL

Save Thousands in Annual Savings vs Conventional Light Tower*

SMART

Remote Control with Dozens of Light Settings

SAFE

ETL, FCC, CE + DOT & OSHA Compliant

FAST

Deploy in Minutes!





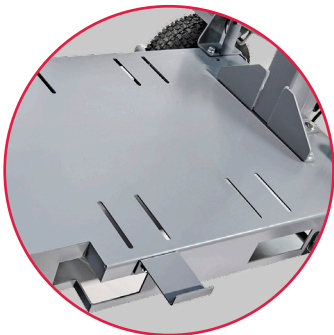
RF REMOTE DOZENS
OF SETTINGS



110V GFCI SWITCH
WITH 3-PIN SOCKET



HAND CRANK
UP/DOWN



FORKLIFT
LIFT SLOTS



DEPLOYABLE
OUTRIGGERS



LED LIGHT CART

700W KIT | 102,000 LUMENS



VT-LC-G1



CONSTRUCTION



FIRE & LAW ENFORCEMENT



UTILITY



EMERGENCY & DISASTER



RENTAL/EVENT

61,000 SQFT OF ILLUMINATION

REFLECTIVE DIFFUSER

REMOTE CONTROL
SEAMLESSLY CONTROL LIGHT BRIGHTNESS



5.8 OPERATING AMPS
LESS ELECTRICITY THAN A DRIP COFFEE MAKER!

110V GFCI SWITCH WITH 3 PIN SOCKET

15FT 4-STAGE STAINLESS STEEL MAST

ANCHOR STRAP SLOT FOR MOUNTING GENERATOR

HAND CRANK FOR EASY DEPLOYMENT

FORKLIFT LIFTING SLOTS

STABILIZER OUTRIGGER

12IN PNEUMATIC TIRE



CONFORMS TO UL STD. 153
CERTIFIED TO CSA STD. C22.2 NO. 250.4



300W SPECIFICATIONS

Fixture Design	4-Modular Panels + 1 Uplight	
Total Wattage (W)	300 W	
Voltage (V)	AC 110-240 V	
Frequency (Hz)	50/60 Hz	
Operating Amps (A)	2.5 A	
Spec LED Wattage (W)	PHILIPS Lumileds 280W	
Luminous Flux (Lumen)	42,000 Lumens	
Color Temperature (Kelvin)	5,700K	
Color Rendering Index (CRI)	>70	
Lamp Life (Hrs)	50,000 Hrs	
Diffuser Inflated (L"x W"x H")	27.5 x 27.5 x 14.2 (70 x 70 x 36 cm)	
Fixture Weight	25 lbs (11 kg)	
Fixture (L"x W"x H")	11.2 x 11.2 x 16.3 (28 x 28 x 41.4 cm)	
Power Cable	25' ft (760 cm)	SJOW 3*14 AWG CORE G US Std Plug
Safety Certifications	UL, CE, FCC, RoHs	
Product Warranty	3-Years	
Ingress Protection	IP65	

700W SPECIFICATIONS

Fixture Design	4-Modular Panels + 1 Uplight	
Total Wattage (W)	700 W	
Voltage (V)	AC 110-240 V	
Frequency (Hz)	50/60 Hz	
Operating Amps (A)	5.8 A	
Spec LED Wattage (W)	PHILIPS Lumileds 680W	
Luminous Flux (Lumen)	102,000 Lumens	
Color Temperature (Kelvin)	5,700K	
Color Rendering Index (CRI)	>70	
Lamp Life (Hrs)	50,000 Hrs	
Diffuser Inflated (L"x W"x H")	27.5 x 27.5 x 19.7 (70 x 70 x 50 cm)	
Fixture Weight	37.5 lbs (17 kg)	
Fixture (L"x W"x H")	11.2 x 11.2 x 25.5 (28 x 28 x 65 cm)	
Power Cable	25' ft (760 cm)	
Safety Certifications	UL, CE, FCC, RoHs	
Product Warranty	3-Years	
Ingress Protection	IP65	

CART DIMENSION & WEIGHT

Mast Dimensions (Collapsed)	5.4ft (165 cm)
Mast Dimensions (Extended)	18ft (550 cm)
Cart Weight (w/out Light Fixture)	170lbs (77kg)
Cart Base Dimension	34W x 48L x 12H in

ACCESSORIES



REMOTE



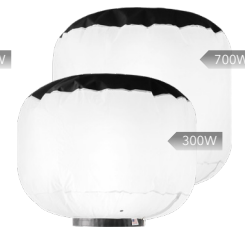
SAFETY CABLE



LIGHT CARRY BAG



WHITE DIFFUSER



REFLECTIVE DIFFUSER



YELLOW & ORANGE



CONTACT

Volterrex powered by ISM Lighting

ISM Lighting, LLC

866-765-VOLT www.volterrex.com

info@ismlighting.com

300 Wampanoag Trail, Riverside, RI 02915

