

# 19,500 LM

LED BALLOON WORK LIGHT KIT

VT-150-G1

 **11,000 ft<sup>2</sup>**



-  HIGH LUMEN OUTPUT OF 19,500LM
-  MULTIPLE MOUNTING OPTIONS INCLUDED
-  RF REMOTE DOZENS OF SETTINGS
-  POWER MULTIPLE UNITS BATTERY PACK
-  CARRY BAGS INCLUDED
-  6FT / 2-STAGE ADJUSTABLE MAST
-  ADAPTER SUPPORTED FOR EASY AND SECURE ATTACHMENT
-  360 DEGREE GLARE FREE DIFFUSED LIGHT

## ACCESSORIES



## SPECIFICATIONS

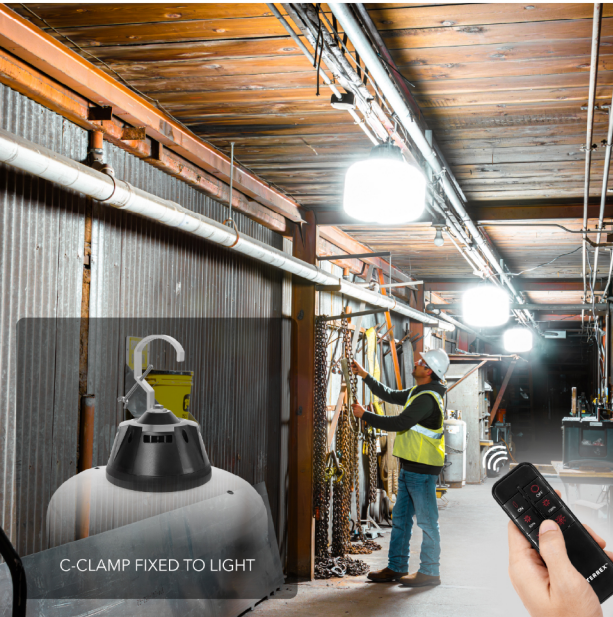
Fixture Design	8-Sided extrusion + Top panel
Total Wattage (W)	150W
Voltage (V)	AC 110-240V
Frequency (Hz)	50/60Hz
Operating Amps (A)	1.25A
Spec   LED Wattage (W)	Samsung   150W
Luminous Flux (Lumen)	19,500 Lumens
Color Temperature (Kelvin)	5,000K
Color Rendering Index (CRI)	>80
Lamp Life (Hrs)	50,000 Hrs

## DIMENSION & WEIGHT

Diffuser Inflated (L"x W"x H")	5.7 x 5.7 x 9.8 (40 x 40 x 25 cm)
Fixture Weight	7.15 lbs (3.24 kg)
Fixture (L"x W"x H")	7 x 7 x 13 (18 x 18 x 33 cm)
Power Cable	15' ft (457 cm) <small>SJOW 3*18 AWG CORE G US Stnd Plug</small>
Tripod Dimensions (Collapsed)	34 in. (86 cm)
Tripod Dimensions (Extended)	79 in. (198 cm)
Tripod Weight	7.1 lbs (3.2 kg)
Tripod Footprint (L"xW"xH")	31 x 31 x 78 (79 x 79 x 198 cm)
Ingress Protection	IP44
Safety Certifications	UL, CE, FCC, RoHs

# EFFORTLESS LIGHTING SETUP

**VOLTERREX**  
Powered by ISM Lighting



C-CLAMP FIXED TO LIGHT



## REMOTE CONTROL

- On/Off
- Brightness adjustment
- Instant settings: 50% and 100%



C-CLAMP

EYE BOLT

CARRY BAG

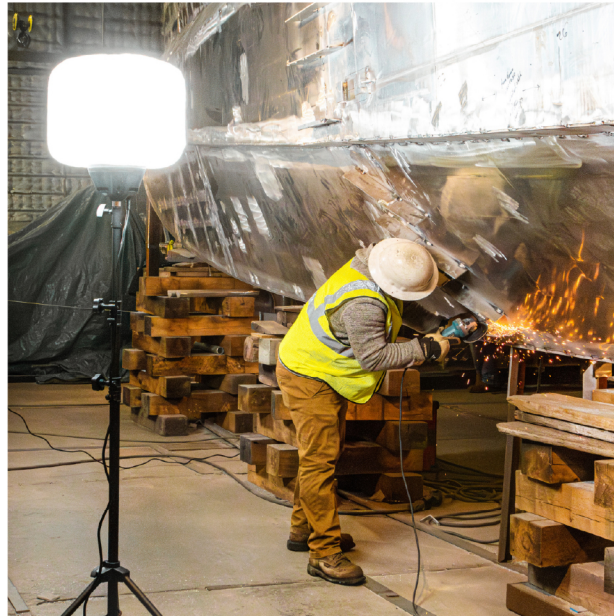
TRIPOD ADAPTER

SAFETY CABLE

REMOTE

TRIPOD

TRIPOD BAG



## POLAR LIGHTING DIAGRAM



QUALITY LIGHT ZONE  
**8,000 ft<sup>2</sup>**  
**50 FT RADIUS, 0.5 FC, 5 LUX**

Comparable to:  
Length of Avg. Garden Hose

up to  
**11,000 ft<sup>2</sup>**

## USE CASES

- Recreation & Backyard Games
- DIY/Home Renovations & Painting
- Events & Outdoor Parties
- Construction & Sitework
- Painting & Drywall

## CONTACT



Volterrex powered by ISM Lighting

866-765-VOLT

www.volterrex.com

info@ismlighting.com

300 Wampanoag Trail,  
Riverside, RI 02915

