



Watches collection

Watch is always a fundamental accessory to build and communicate own style and personality. Affirm your individuality by choosing an unique model for quality and technology.



1 Personalizzazione QUADRANTE
DIAL personalization

Stampe a uno o più colori; possibilità di stampare a tutto quadrante.
Prints with one or more colours; possibility to print overall the dial.

2 Personalizzazione LATO CASSA
CASE'S SIDE personalization

3 Personalizzazione CORONA
CROWN personalization

4 Personalizzazione FONDELLO
CASEBACK personalization

Incisione di loghi, diciture personalizzate per anniversari o eventi, numerazioni progressive per serie limitate.
Engraving of logos, original writing for anniversaries, progressive numeration for limited editions.

5 Personalizzazione CINTURINO
STRAP personalization

6 Personalizzazione FIBBIA
BUCKLE personalization



LADY QUARTZ

Aisha



Case
Metal and leather
Caseback
Snap type, stainless steel
Glass
Mineral
Crown
Stainless steel



Width 30 mm
Thickness 10 mm



Movement
Miyota 7T35



Water Resistant
3 ATM



Bracelet
Metal and leather 30 mm



AH0503GDS



AH0502SLS01



AH0502SLS02



AH0502SLS03

LADY QUARTZ

Andromeda

LADY QUARTZ



Case

Stainless steel, polished

Caseback

Snap type stainless steel

Glass

Mineral

Crown

Stainless steel



Dimensions 21*36,5 mm

Thickness 10,5 mm



Movement

Miyota 2035



Water Resistant

3 ATM



Strap

Leather with croco pattern, 14/12 mm

Buckle

Stainless steel with tongue



0627SS3LWHWH



0627SS3LBKBK

Brezza Lady

Also available in "Gent" version, Ø 40 mm (see Brezza)

LADY QUARTZ



Case
Metal, IPS, polished finishing
Caseback
Snap type, stainless steel

Glass
Mineral

Crown
Stainless steel

Dial
With applied indexes



Diameter 36 mm
Thickness 7,9 mm



Movement
TMI PC20



Water Resistant
3 ATM



Strap
Nato, nylon, 20 mm
Buckle
Stainless steel with tongue



AH0796SLTBLVL



AH0796SLTBLRD



AH0796SLTCERD

Bubble

LADY QUARTZ



Case

Brass with Swarovski stones

Caseback

Snap type, stainless steel

Glass

Mineral



Diameter 35 x 35,5 mm

Thickness 10 mm



Movement

Miyota 2025



Water Resistant

3 ATM



Strap

devil fish skin, 24 mm

Buckle

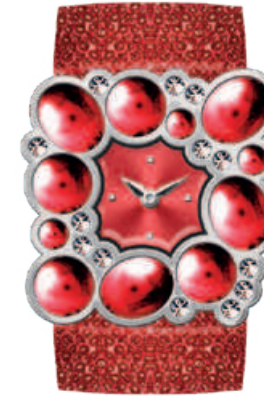
Stainless steel with tongue



BH0650BKL



BH0650BLL



BH0650RDL



BH0650BRL



Candy



Case
Metal and enamel

Caseback
Snap type, stainless steel

Glass
Mineral

Crown
Stainless steel

Dial
Linear brushed



Dimensions 26 x 26 mm
Thickness 8 mm



Movement
TMI PC21



Water Resistant
3 ATM



Bracelet
Metal and enamel, 26 mm

Buckle
Stainless steel

LADY QUARTZ



AH0488SLS10



Carrara

LADY QUARTZ



Case

Stainless steel with polished and brushed finishing

Caseback

Screw type stainless steel

Glass

Mineral

Crown

Stainless steel with blue cabochon

Dial

With applied indexes and 12 crystal stones



Diameter 39 mm

Thickness 9 mm



Movement

Miyota 1L45



Water Resistant

5 ATM



Strap

Padded leather with croco pattern, 18/16 mm

Buckle

Stainless steel with tongue



SH0758BKLBK

Chicwood



Bangle

Natural wood

Caseback

Wood with screws

Glass

Mineral

Crown

Stainless steel



Diameter 22,5 mm

Thickness 10,5 mm



Movement

Miyota 2035



Water Resistant

3 ATM



Bangle width

22,5



0623WU3WIVV



0623WU3WBRBR

LADY QUARTZ

Dada



Case
Rubberized metal

Caseback
Snap type stainless steel

Glass
Mineral

Crown
Stainless steel



Dimensions 39x39 mm
Thickness 10 mm



Movement
TMI PC21



Bracelet
Leather, 20/18 mm

Buckle
Stainless steel with tongue



AH9653WHL



AH9653FXL



AH9653ORL

LADY QUARTZ

Discovery Lady

Also available in "Gent" version, Ø 42,5 mm (see Discovery)

LADY QUARTZ



Case
Stainless steel,
polished finish
Caseback
Screw type stainless steel

Glass
Mineral

Crown
Stainless steel

Dial
With inner ring



Diameter 35 mm
Thickness 9,5 mm



Movement
Miyota GM10



Water Resistant
5 ATM



Strap
Leather with croco
pattern, 18/16 mm
Buckle
Stainless steel with tongue



SH0465WHLWH



SH0465BKL



SH0465WHLRD



SH0465IVL03



SH0465IVL02

Emily



Case
Metal with crystals stones

Caseback
Snap type, stainless steel

Glass
Mineral

Crown
Stainless steel

Dial
Sunray with applied indexes



Dimensions 23x27 mm
Thickness 7,5 mm



Movement
TMI PC21



Water Resistant
3 ATM



Bracelet
Metal with crystals stone



AH0559SLS



AH0559GDS

LADY QUARTZ

Etno-Rock

LADY QUARTZ



Case

Metal, polished finishing

Caseback

Snap type, stainless steel

Glass

Mineral

Crown

Stainless steel

Dial

Linear brushed



Dimensions 20x33,5 mm

Thickness 8,5 mm



Movement

TMI PC21



Water Resistant

3 ATM



Bracelet

Leather with stainless steel studs, 8mm

Buckle

Stainless steel with tongue



AH0508SLLWH

Fanja



Case

Metal, polished finishing

Caseback

Snap type stainless steel

Glass

Mineral

Crown

Stainless steel



Dimensions 19x26,5 mm

Thickness 7,5 mm



Movement

Miyota 2035



Water Resistant

3 ATM



Bracelet

Metal, polished finishing,
15 mm

Buckle

Metal, polished finishing



AH0699WHSL

LADY QUARTZ

Gallipoli Lady

LADY QUARTZ



Case

Metal, polished finishing with crystals

Caseback

Snap type stainless steel

Glass

Mineral

Crown

Stainless steel

Dial

Sunray



Diameter 29 mm

Thickness 9 mm



Movement

Miyota 7T35



Water Resistant

3 ATM



Strap

Padded leather, 14/12 mm

Buckle

Stainless steel with tongue



AH0943SLLSL



AH0943SLLRS



AH0944GDLGD

Gemma

LADY QUARTZ



Case
Metal with crystals

Caseback
Snap type, stainless steel

Glass
Mineral

Crown
Stainless steel

Dial
Sunray



Diameter 23mm width
Thickness 13,5 mm



Movement
TMI PC21



Water Resistant
3 ATM



Bracelet
Metal with charms

Buckle
Stainless steel



AH0552SLSYE



Giglio



Case

Stainless steel, IPRose, polished finishing

Caseback

Snap type stainless steel

Glass

Mineral

Crown

Stainless steel, IPRose

Dial

Radial engraving, with applied indexes with 10 applied crystal stones



Diameter 35 mm

Thickness 10,6 mm



Movement

Miyota 2035



Water Resistant

5 ATM



Strap

Padded leather with croco pattern, 18/16 mm

Buckle

Stainless steel with tongue



SH0742BKLBK



SH0742SLLWH



SH0743SLLBR



LADY QUARTZ

Ginger Neon

LADY QUARTZ



Case
Rubberized metal
Caseback
Snap type stainless steel
Glass
Mineral
Crown
Rubberized metal



Diameter 38 mm
Thickness 10 mm



Movement
Miyota 2025



Water Resistant
5 ATM



Strap
Rubber, 20/18 mm
Buckle
Rubberized metal with tongue



9775ME3RBKWH



9775ME3RCYWH



9775ME3RFXWH



9775ME3RORWH



9775ME3RWHWH



9775ME3RYEWH

Glam



Case

Metal with leather and crystals

Caseback

Snap type, stainless steel

Glass

Mineral

Crown

Stainless steel

Dial

WITH applied indexes



Dimensions 40 mm width

Thickness 5 mm



Movement

Miyota 5Y20



Water Resistant

3 ATM



Bracelet

40 mm width



AH0359WHS01



AH0360WHS03

LADY QUARTZ

Glossy



Case
Plastica
Caseback
Snap type stainless steel
Glass
Mineral
Crown
Stainless steel



Width 47 mm
Thickness 14 mm



Movement
Miyota 2035



Water Resistant
5 ATM



Bracelet
Plastic, 47 mm



PH0399BKP



PH0399VLP



PH0399YEP



PH0399WHPBK



PH0399WHPVL



PH0399WHPYE

LADY QUARTZ

Gummy

LADY QUARTZ



Case
Plastic

Caseback
Stainless steel with screws

Glass
Mineral

Crown
Stainless steel



Dimensions 48,5 x 38 mm
Thickness 12 mm



Movement
Miyota 2115



Water Resistant
5 ATM



Bracelet
Silicon



PH9631BKBK



PH9631BKCY



PH9578GRP



PH9578FXP

Iris



Case
Stainless steel, IPGold or
IPRose, polished finishing

Caseback
Screw type stainless steel

Glass
Mineral

Crown
Stainless steel,
IPGold or IPRose

Dial
Two levels
with applied indexes



Diameter 37 mm
Thickness 10 mm



Movement
TMI VH61



Water Resistant
5 ATM



Strap
Italian leather, with S/S
buckle with tongue,
18/16 mm

Bracelet
Stainless steel, mesh band,
IPGold or IPRose, coulisse
closure, 18/16 mm



SH0788SLS



SH0787SLS



SX0785SLLBK



SX0784SLLBL



SX0784SLLBL

LADY QUARTZ

Judy



Case
Metal

Caseback
Snap type, stainless steel

Glass
Mineral

Crown
Stainless steel

Dial
With inner ring



Dimensions 30x34 mm
Thickness 10,2 mm



Movement
TMI PC21



Water Resistant
3 ATM



Strap
Patent italian leather,
24/22 mm

Buckle
Stainless steel with tongue

LADY QUARTZ



AH0501SLL06



AH0501SLL03



Kyoto



Case
Stainless steel

Caseback
Snap type, stainless steel

Glass
Mineral

Crown
Stainless steel

Dial
With 9 applied crystal stones, date window



Dimensions 34x40 mm
Thickness 9 mm



Movement
Miyota 2035



Water Resistant
3 ATM



Strap
Leather 30/24 mm
Buckle
Stainless steel with tongue



SH0395PRL01RS

LADY QUARTZ

Missy



Case
Stainless steel with crystal

Caseback
Snap type, stainless steel

Glass
Mineral

Crown
Stainless steel

Dial
Sunray / Mother of pearl



Dimensions 26,5 x 34 mm
Thickness 8,5 mm



Movement
Miyota GL30



Bracelet
Stainless steel
Buckle
Stainless steel



SH0272RSS



SH0477PRS

LADY QUARTZ

Novara Lady

Also available in "gent" version, Ø 43 mm (see Novara)

LADY QUARTZ



Case

Metal, polished finishing

Caseback

Screw type stainless steel

Glass

Mineral

Crown

Stainless steel

Dial

With printed indexes and guilloché finishing



Diameter 34.6 mm

Thickness 10.7 mm



Movement

Miyota GM10



Water Resistant

5 ATM



Bracelet

Stainless steel,
with polished and brushed
finishing, 18/16 mm

Buckle

Stainless steel, deployante



SH0808BKS



Parigi



Case

Metal IPS, polished finishing with crystals

Caseback

Stainless steel

Glass

Mineral

Crown

Stainless steel

Dial

Two levels with guilloché finishing



Diameter 38 mm

Thickness 9 mm



Movement

Miyota 2039



Water Resistant

5 ATM



Strap

Eco leather, 20/16 mm

Buckle

Stainless steel with tongue



AH0727SLLRD



AH0727SLLFX



AH0727SLLVL



AH0727SSLIV



AH0727SLLBK



LADY QUARTZ

Romance

LADY QUARTZ



Case
Stainless steel

Caseback
Snap type, stainless steel

Glass
Mineral

Crown
Stainless steel with crystal stone

Dial
With 7 applied crystal stones



Dimensions 36x44 mm
Thickness 10 mm



Movement
Miyota 2035



Water Resistant
3 ATM



Strap
Leather with croco pattern
29/19 mm

Buckle
Stainless steel with tongue



SH0427SLL



SH0425BKL



Samantha

LADY QUARTZ



Case

Metal, with IP black coating polished finishing

Caseback

Snap type, stainless steel

Glass

Mineral, diamond cut

Crown

Stainless steel



Diameter 20 x 23,5 mm

Thickness 9 mm



Movement

TMI PC21



Water Resistant

3 ATM



Strap

Metal, IP black coating, 15 mm

Buckle

Stainless steel, deployante



AH0483SLS



AH0483BKS



Siena

LADY QUARTZ



Case

Stainless steel with brushed and polished finishing

Caseback

Screw-type, stainless steel

Glass

Mineral with lens

Crown

Stainless steel



Diameter 36 mm

Thickness 10,5 mm



Movement

Miyota 2315



Water Resistant
5 ATM



Strap

Stainless steel, 18/16 mm, with polished and brushed finishing

Buckle

Stainless steel, deployante



SH0707WHS



Sintesi Lady

Also available in "Gent" version, Ø 40 mm (see Sintesi)

LADY QUARTZ



Case

Metal, polished finishing

Caseback

Snap type, stainless steel

Glass

Mineral

Crown

Stainless steel

Dial

WITH applied indexes



Diameter 36 mm

Thickness 7,9 mm



Movement

TMI PC20



Water Resistant

3 ATM



Strap

Eco leather, with S/S buckle with tongue, 18/16 mm

Bracelet

Stainless steel, Milanese mesh band, coulisse closure, 18 mm



AH0797SLS



AH0797SLLBK



AH0797SLLBL



AH0797SLLTQ



AH0797SLLRS



AH0797BKS



AH0797BKLBK



AH0797BKLR



AH0797BKLDG



AH0797BKLRD



Sunrise

LADY QUARTZ



Case
Metal and enamel

Caseback
Snap type, stainless steel

Glass
Mineral

Crown
Metal

Dial
WITH applied indexes



Diameter 38 mm
Thickness 9 mm



Movement
TMI PC21



Water Resistant
3 ATM



Strap
Leather, with S/S buckle with tongue, 20/18 mm



AH0496SLL05



AH0497SLL03



Susan

LADY QUARTZ



Case
Metal, polished finishing

Caseback
Snap type, stainless steel

Glass
Mineral

Crown
Metal

Dial
WITH inner ring



Dimensions 36x42 mm
Thickness 8,5 mm



Movement
TMI PC21



Water Resistant
3 ATM



Strap
Leather, with S/S
buckle with tongue,
25/21 mm



AH0500SLL05



Twice

LADY QUARTZ



Case

Metal with polished finishing

Caseback

Snap-type, stainless steel

Glass

Mineral

Crown

Stainless steel

Dial

2 time zones



Diameter 23 x 48 mm

Thickness 8 mm



Movement

2 x TMI PC21



Water Resistant

5 ATM



Strap

Padded imitation leather
16/14 mm

Buckle

Stainless steel with tongue



AH0433SLLWH



AH0433SLLLI



Vicky



Case
Stainless steel

Caseback
Screw type stainless steel

Glass
Mineral

Crown
Stainless steel



Diameter 32 mm
Thickness 9,5 mm



Movement
Miyota GM10



Water Resistant
3 ATM



Bracelet
Leather, 16/14 mm

Buckle
Stainless steel



SH0516WHLBK



SH0516WHLRD

LADY QUARTZ

Vieste



Case

Stainless steel, polished and brushed finishing

Caseback

Screw type stainless steel

Glass

Mineral with lens

Crown

Stainless steel

Dial

With applied indexes and luminos



Diameter 36 mm

Thickness 10,5 mm



Movement

Miyota 2315



Water Resistant

5 ATM



Bracelet

Stainless steel, with polished and brushed finishing, 18/16 mm

Buckle

Stainless steel, deployante



SH0707BKS



SH0707CES



SH0707RSS



SH0707SLS

LADY QUARTZ

Volterra 36



Case
Stainless steel,
IP Rose Gold,
with polished finishing

Caseback
Snap type stainless steel

Glass
Mineral

Crown
Stainless steel

Dial
With applied indexes



Diameter 36 mm
Thickness 5,5 mm



Movement
Miyota GL20



Water Resistant
3 ATM



Strap
Padded leather with S/S
buckle with tongue,
18/16 mm

NATO strap
Nylon, with S/S buckle
with tongue, 18 mm

Bracelet
Stainless steel,
Milanese mesh band,
coulisse closure, 18 mm



SH0730SLLBK



SH0730WHLBR



SH0729WHTBLWH



SH0729WHTBLVL



SH0729WHTBLRD



SH0729WHTCERD



SH0729WHTCEWH



SH0729SLS



SH0755SLS



SH0732WHLBR



SH0731WHTGERD



SH0731WHTBLRS



SH0731WHTCERS



SH0807SLS



SH07545SLLWH



LADY QUARTZ

Wendy

LADY QUARTZ



Case
Metal

Caseback
Snap type, stainless steel

Glass
Diamond cut mineral

Crown
Stainless steel



Dimension 28 x 30 mm
Thickness 9 mm



Movement
TMI PC21



Water Resistant
3 ATM



Bracelet
Metal and glass 30 mm



AH0553RSS



AH0553BLS



AH0553BKS



AH0554FXS



AH0553VLS



AH0553GES



AH0553RDS



Rosa

Also available in "Gent" version, Ø 43 mm (see Locarno)

LADY QUARTZ



Case

Stainless steel, IPRose, polished finishing

Caseback

Stainless steel

Glass

Mineral, domed

Crown

Stainless steel, IPRose

Dial

Guilloché pattern with applied indexes



Diameter 34 mm

Thickness 10,5 mm



Movement

ETA 902.101



Water Resistant

5 ATM



Strap

Leather, saffiano texture, with S/S buckle with tongue, 16/14 mm

Bracelet

Stainless steel, Milanese mesh band, coulisse closure, 16/16 mm



SC0798SLS



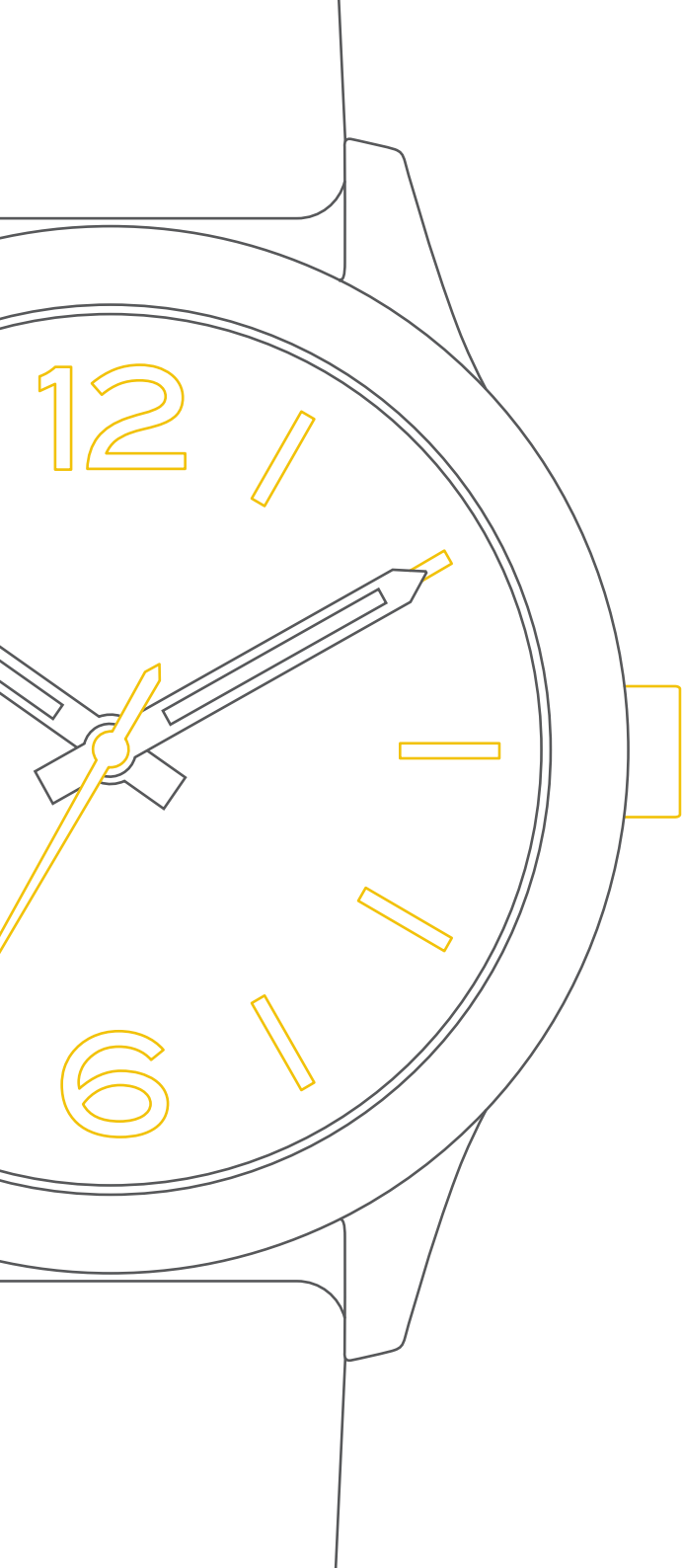
SC0799SLS



SC0798SLLRD



SC0799SLLIV



ECO-FRIENDLY

Eden

ECO-FRIENDLY



Case

Natural wood

Caseback

Natural wood with screws

Glass

Mineral

Crown

Stainless steel

Dial

Natural wood with applied indexes



Diameter 40 mm

Thickness 11 mm



Movement

Miyota 2035



Strap

Apple skin, with S/S buckle with tongue, 18/16 mm

Bracelet

Natural wood with S/S buckle with tongue, 18/18 mm



Maple wood



WH56651VWIV

Apple skin



WH56651VLGE



WH56651VLTQ



WH56651VLR5



WH56651VLBL

Sandal wood



WH5665BRWBR



WH5665BRLGE



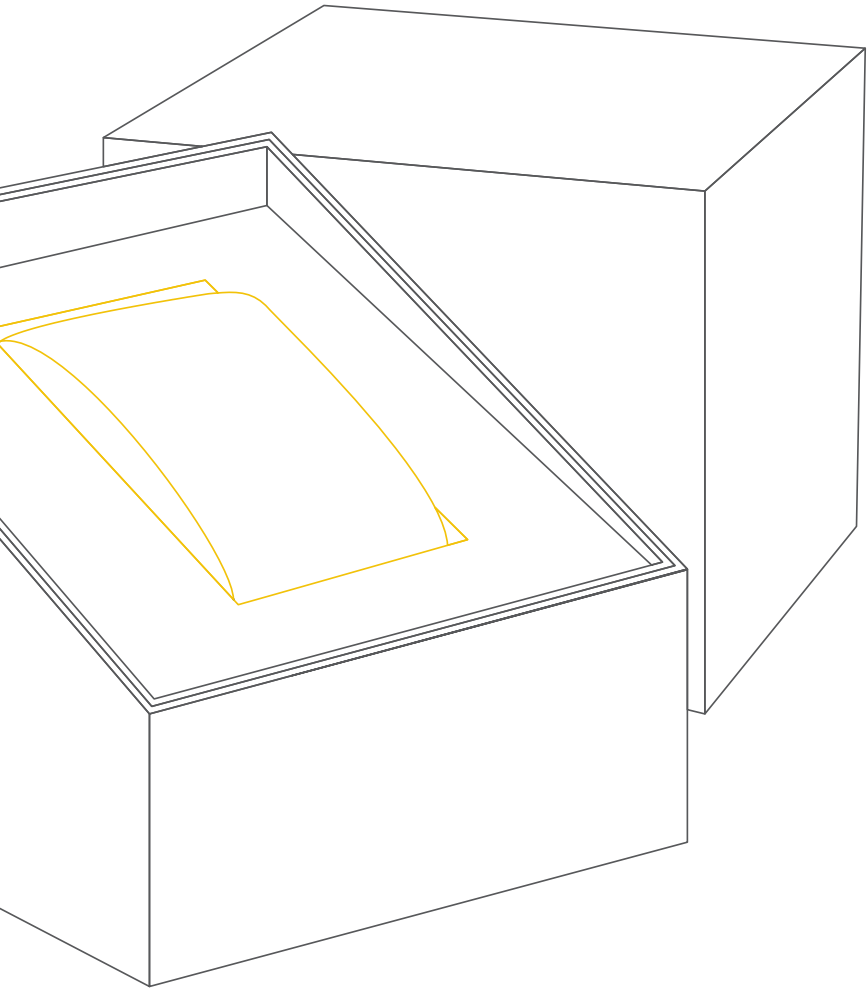
WH5665BRLDG



WH5665BRLRD



WH5665BRLOR



PACKAGING
& DISPLAY

Ghost



Dimension
80 mm × 80 mm; H80 mm



Material
Trasparent plastic



BP08

Leporello



Dimension
76 mm × 68 mm; H20 mm



Material
Paper



LEPORELLO

Origami



Dimension
100 mm × 100 mm; H80 mm



Material
Paper



PBC02LM

Avana



Dimension
90 mm × 90 mm; H93 mm



Material
Cardboard



AVANA

Frame



Dimension
90 mm × 90 mm; H110 mm



Material
Plastic



FRAME

Sliding



Dimension
84 mm × 154 mm; H45 mm



Material
Tin



PNM08SM

Cubica



Dimension
105 mm × 105 mm; H75 mm



Material
Tin



BLA07

Cilindrica



Dimension
Ø 102 mm; H74 mm



Material
Tin



BLA08

Gift



Dimension
75 mm × 290 mm; H40 mm



Material
PU



AL08

Scrigno



Dimension
120 mm × 120 mm; H85 mm



Material
PU



AQ08 - white

Set



Dimension
94 mm × 328 mm; H27 mm



Material
Paper



SET

Slipcase



Dimension
50 mm × 260 mm; H26 mm



Material
Paper



SLIPCASE

Prince



Dimension
140 mm × 290 mm; H65 mm



Material
Wood



PBL02LE

Lusso



Dimension
140 mm × 140 mm; H100 mm



Material
Wood



PBL02LM

Stage



Dimension
400 mm × 385 mm; H300 mm



Material
Enameled wood and EVA



ESP004

Fold



Dimension
210 mm × 102 mm; H125 mm



Material
Polycarbonate with
transparent pocket



ESP005

Cristallo



Dimension
270 mm × 340 mm; H420 mm



Material
Polycarbonate



PACKAGING & DISPLAY