

Instructions for the

## Gonorrhoea STI Rapid Test

### Step 1: Setting up the test

Wash your hands with soap and warm water.

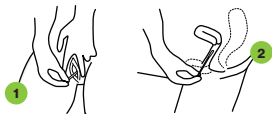
Open the packaging and lay the contents out on a clean surface:

- A** Extraction Tube (filled with Buffer A)
- B** Plastic Vial (filled with Buffer B)
- C** Test card
- D** Two swabs (2 swabs for testing with a vagina; 1 for testing with a penis)

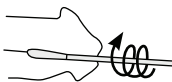


### Step 2: Swabbing to collect the sample

**If testing with a vagina:** use one swab to wipe the opening to your vagina. Then insert the second swab into your vagina for half a minute, carefully removing to avoid contact with any external surfaces.



**If testing with a penis:** insert one swab into the urethra of the penis. Gently rotate, allowing the swab to remain inserted for a few seconds after rotation. Carefully remove the swab, avoiding contact with any external surfaces.



### Step 3: Adding your sample to the Extraction Tube



Tear the silver foil top off the Extraction Tube, filled with Buffer A.



Put the swab into the Extraction Tube, rotating the swab against the Tube about 10 times and no less than 15 seconds.



Twist the top off the Plastic Vial, filled with Buffer B.



Add the contents to the Extraction Tube.



Again, rotate the swab against the Tube about 10 times and no less than 15 seconds.



Hold the swab firmly through the Extraction Tube and break it at the breakpoint.



Keeping the swab head in the tube, close the lid of the Extraction Tube and shake vigorously.

## Step 4: Adding the Sample Buffer to the Test Card

Hold the Extraction Tube vertically and squeeze two drops of solution into the Sample Well on the Test Card, making sure there are no air bubbles.



## Step 5: Reading the results

Read the results within 15-20 minutes. Do not read results after 20 minutes.

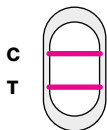
**Negative result:** if one pink band appears next to "C", this indicates a negative result.

**Positive result:** if one pink band appears next to "C" and one pink band next to "T", this indicates a positive result.

**Invalid test:** if one pink band appears next to "T", or if no coloured bands appear, this indicates an invalid test.



**Negative**



**Positive**



**Invalid**



**Invalid**