

Ettie

EttieKits® **STI Rapid Tests**

Instructions for the Multi-Kit

EttieKits® STI Rapid Test **Multi-Kit contains:**

- Chlamydia Test Kit
- Gonorrhoea Test Kit
- Syphilis Test Kit
- Herpes-2 Test Kit
- 2 x Extra Lancets

Good on you for getting on top of your sexual health.

**Here's how to take the
EttieKits® STI Rapid Tests.**

Ready? Let's go!

Instructions for the

Chlamydia STI Rapid Test

Step 1: Setting up the test

Wash your hands with soap and warm water.

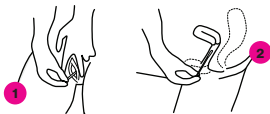
Open the packaging and lay the contents out on a clean surface:

- A** Extraction Tube (filled with Buffer A)
- B** Plastic Vial (filled with Buffer B)
- C** Test card
- D** Two swabs (2 swabs for testing with a vagina; 1 for testing with a penis)

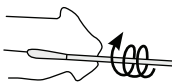


Step 2: Swabbing to collect the sample

If testing with a vagina: use one swab to wipe the opening to your vagina. Then insert the second swab into your vagina for half a minute, carefully removing to avoid contact with any external surfaces.



If testing with a penis: insert one swab into the urethra of the penis. Gently rotate, allowing the swab to remain inserted for a few seconds after rotation. Carefully remove the swab, avoiding contact with any external surfaces.



Step 3: Adding your sample to the Extraction Tube



Tear the silver foil top off the Extraction Tube, filled with Buffer A.



Put the swab into the Extraction Tube, rotating the swab against the Tube about 10 times and no less than 15 seconds.



Twist the top off the Plastic Vial, filled with Buffer B.



Add the contents to the Extraction Tube.



Again, rotate the swab against the Tube about 10 times and no less than 15 seconds.



Hold the swab firmly through the Extraction Tube and break it at the breakpoint.



Keeping the swab head in the tube, close the lid of the Extraction Tube and shake vigorously.

Step 4: Adding the Sample Buffer to the Test Card

Hold the Extraction Tube vertically and squeeze two drops of solution into the Sample Well on the Test Card, making sure there are no air bubbles.



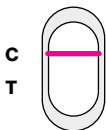
Step 5: Reading the results

Read the results within 15-20 minutes. Do not read results after 20 minutes.

Negative result: if one pink band appears next to "C", this indicates a negative result.

Positive result: if one pink band appears next to "C" and one pink band next to "T", this indicates a positive result.

Invalid test: if one pink band appears next to "T", or if no coloured bands appear, this indicates an invalid test.



Negative



Positive



Invalid



Invalid

Instructions for the

Gonorrhoea STI Rapid Test

Step 1: Setting up the test

Wash your hands with soap and warm water.

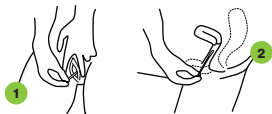
Open the packaging and lay the contents out on a clean surface:

- A** Extraction Tube (filled with Buffer A)
- B** Plastic Vial (filled with Buffer B)
- C** Test card
- D** Two swabs (2 swabs for testing with a vagina; 1 for testing with a penis)

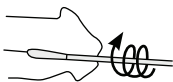


Step 2: Swabbing to collect the sample

If testing with a vagina: use one swab to wipe the opening to your vagina. Then insert the second swab into your vagina for half a minute, carefully removing to avoid contact with any external surfaces.



If testing with a penis: insert one swab into the urethra of the penis. Gently rotate, allowing the swab to remain inserted for a few seconds after rotation. Carefully remove the swab, avoiding contact with any external surfaces.



Step 3: Adding your sample to the Extraction Tube



Tear the silver foil top off the Extraction Tube, filled with Buffer A.



Put the swab into the Extraction Tube, rotating the swab against the Tube about 10 times and no less than 15 seconds.



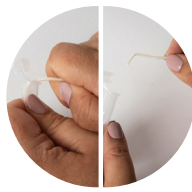
Twist the top off the Plastic Vial, filled with Buffer B.



Add the contents to the Extraction Tube.



Again, rotate the swab against the Tube about 10 times and no less than 15 seconds.



Hold the swab firmly through the Extraction Tube and break it at the breakpoint.



Keeping the swab head in the tube, close the lid of the Extraction Tube and shake vigorously.

Step 4: Adding the Sample Buffer to the Test Card

Hold the Extraction Tube vertically and squeeze two drops of solution into the Sample Well on the Test Card, making sure there are no air bubbles.



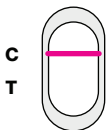
Step 5: Reading the results

Read the results within 15-20 minutes. Do not read results after 20 minutes.

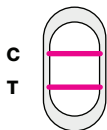
Negative result: if one pink band appears next to "C", this indicates a negative result.

Positive result: if one pink band appears next to "C" and one pink band next to "T", this indicates a positive result.

Invalid test: if one pink band appears next to "T", or if no coloured bands appear, this indicates an invalid test.



Negative



Positive



Invalid



Invalid

Instructions for the

Syphilis STI Rapid Test

Step 1: Setting up the test

Open the packaging and lay the contents out on a clean surface:

- A** Alcohol Pad
- B** Buffer Solution
- C** Lancet
- D** Test Card
- E** Plastic Dropper



Step 2: Wash and prep

Wash your hands with soap and warm water (note: it's easier to collect a sample from warm hands).

Use the Alcohol Pad to clean your preferred finger for sample collection.

Step 3: Using the lancet to do the finger-prick



Gently twist the blue cap off the orange base of the lancet.



Discard the blue cap as you won't need that anymore.



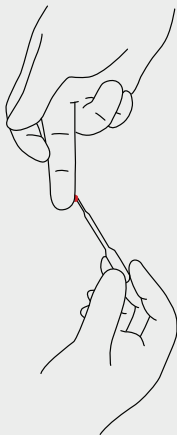
Line up the orange base of the lancet against your chosen finger and press firmly. The tiny needle inside the lancet is spring-loaded and will activate once in contact, puncturing the skin, after which it will retract back into the orange base for you to dispose of safely.

Note: We have supplied you with a second lancet in case it activates in error and is unable to be used.

Step 4: Using the Plastic Dropper to collect the blood sample

Holding the finger downward, apply gentle pressure beside the point of the puncture and wipe away the first drop of blood with the Alcohol Pad. Allow a new drop of blood to form. If blood flow is inadequate, gently massage your finger at the finger base.

Take the Plastic Dropper and touch it to where blood is forming. Squeeze it gently and then release it to suction up around three drops of blood.





Step 5: Adding your blood sample to the Test Card

Squeeze the Plastic Dropper containing your blood sample into the Sample Well on the Test Card.



Step 6: Adding the Sample Buffer to the Test Card

Squeeze one drop of Sample Buffer into the Sample Well on the Test Card.

Step 7: Reading the results

Read the results within 15-20 minutes. Do not read results after 20 minutes.

Negative result: if one pink band appears next to “C”, this indicates a negative result.

Positive result: if one pink band appears next to “C” and one pink band next to “T”, this indicates a positive result.

Invalid test: if one pink band appears next to “T”, or if no coloured bands appear, this indicates an invalid test.



Negative



Positive



Invalid



Invalid

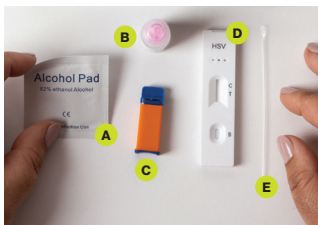
Instructions for the

Herpes-2 Virus STI Rapid Test

Step 1: Setting up the test

Open the packaging and lay the contents out on a clean surface:

- A** Alcohol Pad
- B** Buffer Solution
- C** Lancet
- D** Test Card
- E** Plastic Dropper



Step 2: Wash and prep

Wash your hands with soap and warm water (note: it's easier to collect a sample from warm hands).

Use the Alcohol Pad to clean your preferred finger for sample collection.

Step 3: Using the lancet to do the finger-prick



Gently twist the blue cap off the orange base of the lancet.



Discard the blue cap as you won't need that anymore.



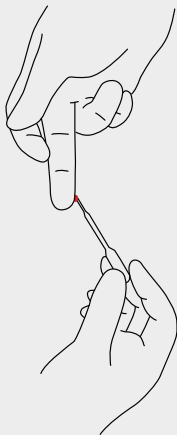
Line up the orange base of the lancet against your chosen finger and press firmly. The tiny needle inside the lancet is spring-loaded and will activate once in contact, puncturing the skin, after which it will retract back into the orange base for you to dispose of safely.

Note: We have supplied you with a second lancet in case it activates in error and is unable to be used.

Step 4: Using the Plastic Dropper to collect the blood sample

Holding the finger downward, apply gentle pressure beside the point of the puncture and wipe away the first drop of blood with the Alcohol Pad. Allow a new drop of blood to form. If blood flow is inadequate, gently massage your finger at the finger base.

Take the Plastic Dropper and touch it to where blood is forming. Squeeze it gently and then release it to suction up around three drops of blood.





Step 5: Adding your blood sample to the Test Card

Squeeze the Plastic Dropper containing your blood sample into the Sample Well on the Test Card.



Step 6: Adding the Sample Buffer to the Test Card

Squeeze one drop of Sample Buffer into the Sample Well on the Test Card.

Step 7: Reading the results

Read the results within 15-20 minutes. Do not read results after 20 minutes.

Negative result: if one pink band appears next to “C”, this indicates a negative result.

Positive result: if one pink band appears next to “C” and one pink band next to “T”, this indicates a positive result.

Invalid test: if one pink band appears next to “T”, or if no coloured bands appear, this indicates an invalid test.



Negative



Positive



Invalid



Invalid

If you received a positive result for any of the tests you've just taken, please consult a medical professional who will provide you with advice and treatment.

Visit [**ettie.co.nz**](https://ettie.co.nz) for more information and FAQs, and email us at [**hello@ettiekits.co.nz**](mailto:hello@ettiekits.co.nz) if you have any feedback for the team behind EttieKits®.

Regular testing is a good idea if you want to keep on top of your sexual health. Order your next EttieKits® STI Rapid Test Multi-Kit at [**ettie.co.nz**](https://ettie.co.nz)



