

October 2022

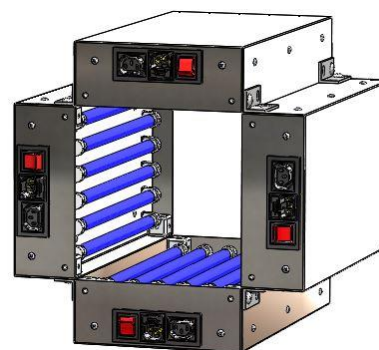
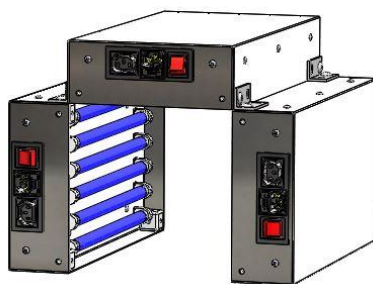
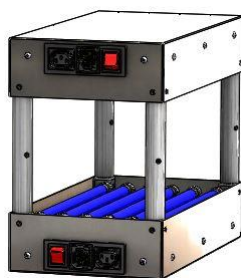
LUZCHEM EXPOSURE PANELS EXPO-02

Luzchem's exposure panel EXPO-02 is a cost-effective and flexible solution for ultraviolet and visible irradiation. This modular lighting panel is an incredibly versatile exposure tool.



Configurations:

The EXPO-02 is equipped with six 8WT5 lamp positions, controlled by a single switch. Hardware is available to form a variety of configurations, mounting up to six panels. Compatible with LZC series Luzchem lamps.



Luzchem Research, Inc.

Toll free 1-800-397-0977
Phone: (613) 749-2442
Fax: (613) 749-2393
E-mail: sales@luzchem.com

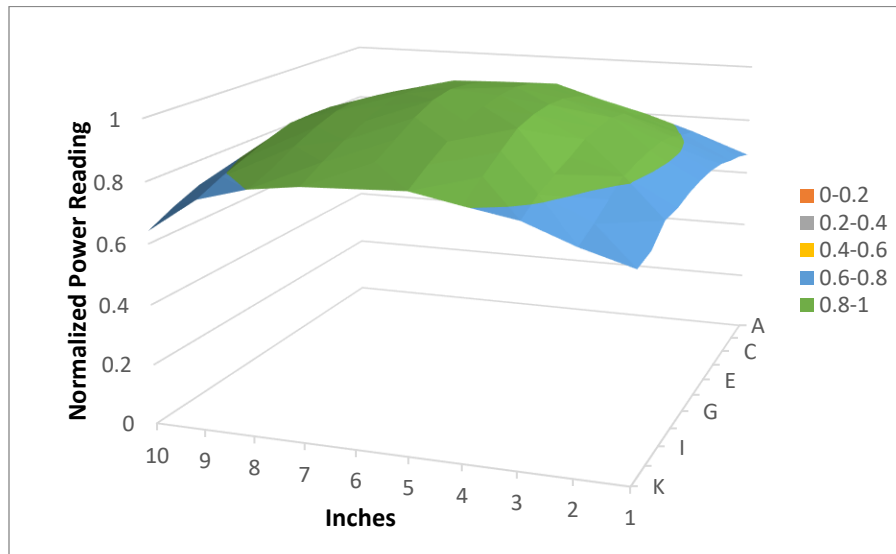
5509 Canotek Road
Unit 12
Ottawa, Ontario K1J 9J9, Canada
www.luzchem.com

Flexibility:

The Expo panel's design allows for virtually infinite flexibility. Each expo panel has 1/4-20 threaded connecting cubes for mounting panels together, on legs or for other fitting applications.

Distribution / Homogeneity:

Luzchem's EXPO panels offer a large irradiation area of approximately 8x12 inches, with variations within +/-10%.



Normalized Measurements ~9.5 inches LZC-VIS lamps

Applications:

Applications include, but are not limited to:

- organic photochemistry
- photobiology
- photodegradation
- photostability
- ultraviolet curing
- photocatalysis
- contact imaging
- disinfection
- bacterial sterilization
- accelerated aging

Toll free 1-800-397-0977
Phone: (613) 749-2442
Fax: (613) 749-2393
E-mail: sales@luzchem.com

Luzchem Research, Inc.

5509 Canotek Road
Unit 12
Ottawa, Ontario K1J 9J9, Canada
www.luzchem.com

Unit Specifications:

Dimensions:	<i>External:</i> 8.22" wide, 15.18" long and 3.04" tall (20.9 x 38.6 x 7.7 cm) <i>Emissive area:</i> approximately 8" x 15"
Weight:	9 lbs. / 4.1 kg
Power Rating:	110/220 VAC, 50/60 Hz cycle, 3 Amp
Housing Material:	<i>External:</i> Stainless Steel <i>Internal (behind lamps):</i> Reflective Aluminum Alloy
Operating Ambient Temperature:	10 °C to 35 °C
Panel Temperature:	The panel has a safety shut-off which will cut power if the temperature exceeds 60 C
Humidity:	Must be between 0% and 95% (non-condensing)

Safety

Ultraviolet radiation causes skin and eye damage. Users must exercise proper care to protect themselves and those in the area from UV radiation. Luzchem suggests the use of our UV-Shield for use with all UV lamps. Users are responsible for providing adequate ventilation if experiments produce unsafe gases.

Toll free 1-800-397-0977
Phone: (613) 749-2442
Fax: (613) 749-2393
E-mail: sales@luzchem.com

Luzchem Research, Inc.

5509 Canotek Road
Unit 12
Ottawa, Ontario K1J 9J9, Canada
www.luzchem.com

Compatible Lamps (sold separately):

LZC-Fluorescent		LZC-LED	
Part number	Description	Part number	Description
LZC-UVC	UVC	LZC-LBL	Blue LED
LZC-UVB	UVB	LZC-LGR	Green LED
LZC-355	UVA	LZC-LAM	Amber LED
LZC-VIS	Visible	LZC-LRD	Red LED
LZC-420	420 nm	LZC-LCW	Cool White (~6000 K)
		LZC-LWW	Warm White (~3000 K)

Features:

Feature	Specifications
ON/OFF switch	<ul style="list-style-type: none"> A single toggle switch controls all six lamps
Panel-to-Panel Power	<ul style="list-style-type: none"> IEC C13 inlet and IEC C14 outlet allow users to chain multiple Expo panels (panel-to-panel cable, sold separately)
Building cubes	<ul style="list-style-type: none"> Four ¼" -20 tapped mounting cubes, allowing easy installation of posts or other hardware. (sold separately)
Included UV protecting goggles	<ul style="list-style-type: none"> One pair of UV-cutting safety goggles (400nm)

Luzchem Research, Inc.

Toll free 1-800-397-0977
 Phone: (613) 749-2442
 Fax: (613) 749-2393
 E-mail: sales@luzchem.com

5509 Canotek Road
 Unit 12
 Ottawa, Ontario K1J 9J9, Canada
www.luzchem.com

Accessories:

Luzchem offers a variety of accessories for use with your EXPO-02 panel.

- **LZC-TIM-E:** An external digital shut-down timer designed to optimize length exposure length with a programmed shut-off time
- **UV-SHEILD:** A free-standing U-Shaped, UV cutting panel used to protect users and areas of use against skin or eye injuries when using UV light in the lab. Luzchem recommends the UV-Shield for use with any ultraviolet lamps.
- **LZC-PM:** A sensor and handheld meter for measuring and monitoring illuminance and irradiance. Calibration factors are available for most LZC series lamps.
- **Sample Accessories:** Luzchem offers portable devices such as
 - a. merry-go-rounds (carousel) for test tubes
 - b. portable turntables for flat samples
 - c. magnetic stirrers for flask-ware
 - d. environmental chamber
- **Interconnection kits:** Allowing users to assemble multiple panels into our most popular configurations.

Luzchem Research, Inc.

The logo for Luzchem Research, Inc. features a stylized blue wave graphic that curves under the company name.

Toll free 1-800-397-0977
Phone: (613) 749-2442
Fax: (613) 749-2393
E-mail: sales@luzchem.com

5509 Canotek Road
Unit 12
Ottawa, Ontario K1J 9J9, Canada
www.luzchem.com