



Source Measure Unit USB Drivers

Installation Guide

Manual version 2.0.A

Contents

- 1. Windows 8 and 10 2
- 2. Windows 7 3
- 3. Revision History..... 6

1. Windows 8 and 10

- 1. Connect the unit to the computer using a USB cable.
- 2. On computers running Windows 8 and 10, the drivers will be installed automatically.
 - I. The unit will appear in the Device Manager under the Ports (COM & LTP) section as USB Serial Device (COM9) as shown in Figure 1.1.

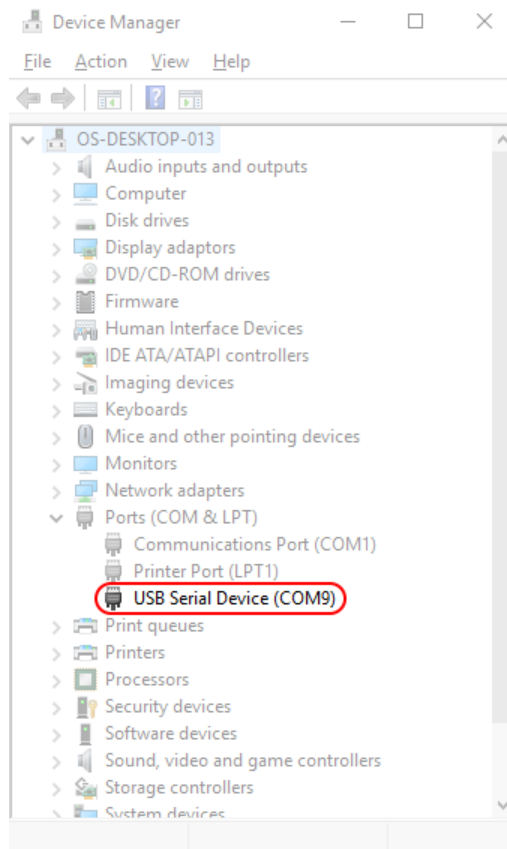
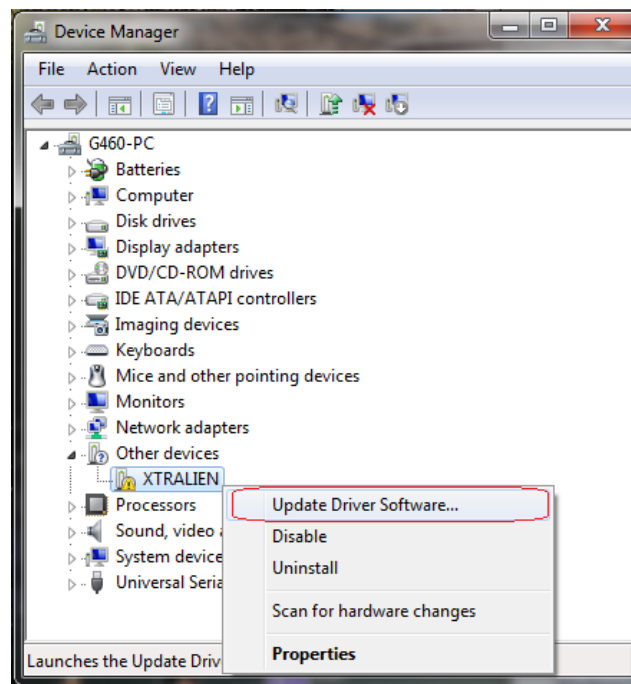


Figure 1.1: Ossila Source Measure Unit in the Device Manager.

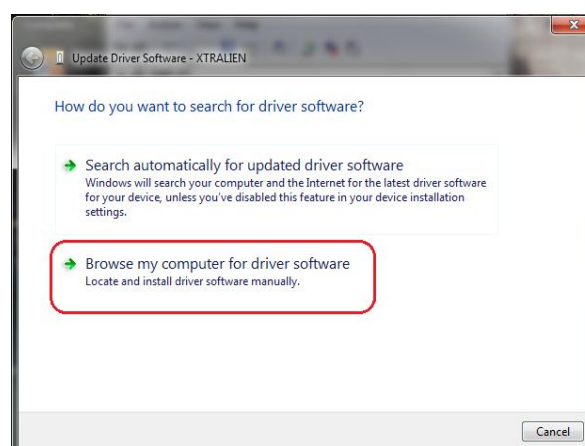
2. Windows 7

On computers running Windows 7 32/64 bit the unit will appear under the “Other devices” section as “XTRALIEN”. The USB drivers should be installed by running the 32bit or 64bit installation file found on the USB memory stick that is provided with the unit. Sometimes, the unit will be detected under the “Other devices” section after installing the USB drivers. In such cases, the USB driver needs to be installed manually through the following steps:

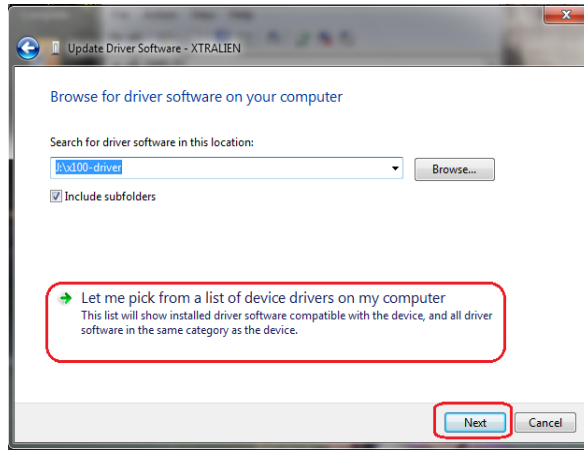
1. Right click on **XTRALIEN** under the “Other devices” section and choose “Update driver software”.



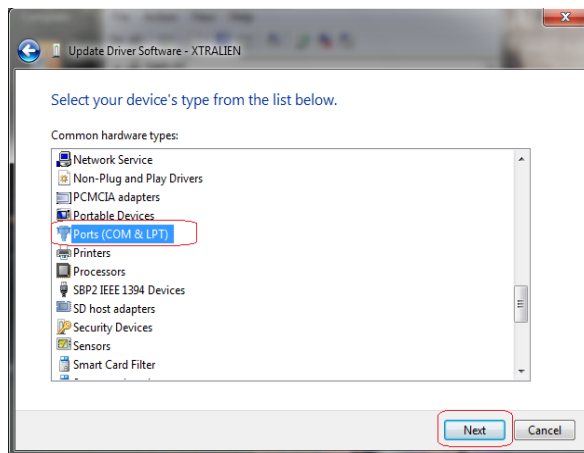
2. Click on the “Browse my computer for driver software” option.



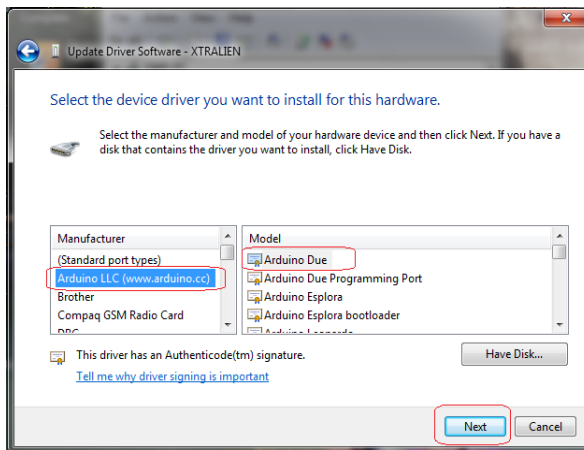
3. Select “Let me pick from list of device drivers on my computer”, then click next.



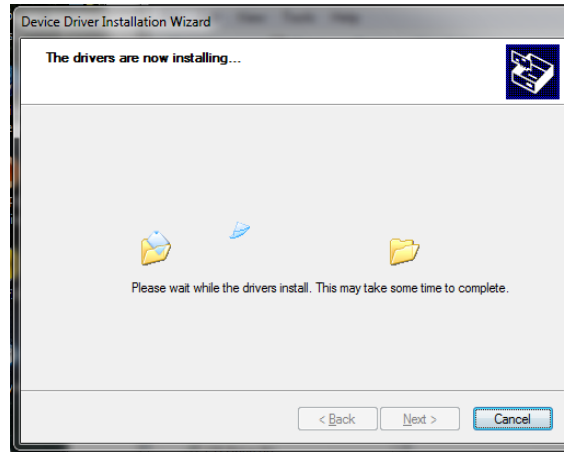
4. Select "Ports (COM & LPT)" then click next.



5. Select "Arduino LCC" from the manufacturer list and "Arduino Due ..." from the model list.



6. Wait for the device driver installation wizard to finish the installation.



7. If the installation has been successful, the unit will appear as **Arduino Due (COM x)** under the "Ports" section of the device manager as in Figure 2.1.

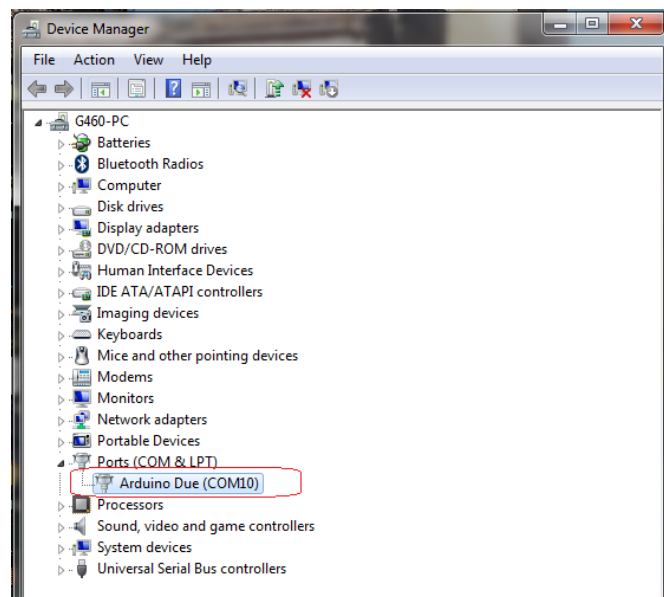
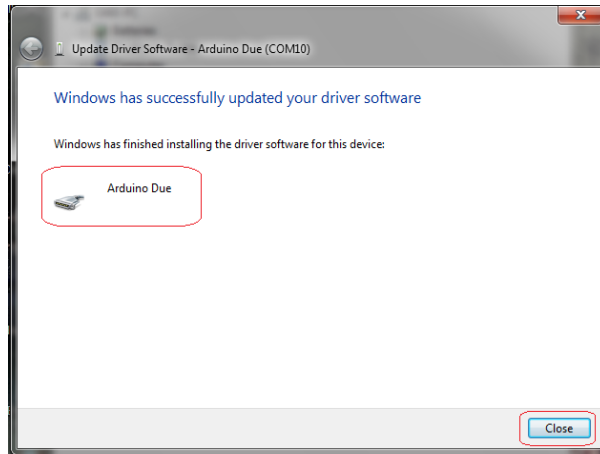


Figure 2.1: Ossila Source Measure Unit in the Device Manager after successful USB driver installation on Windows 7.

3. Revision History

Rev	Date	Description
A	Oct 2018	Initial version