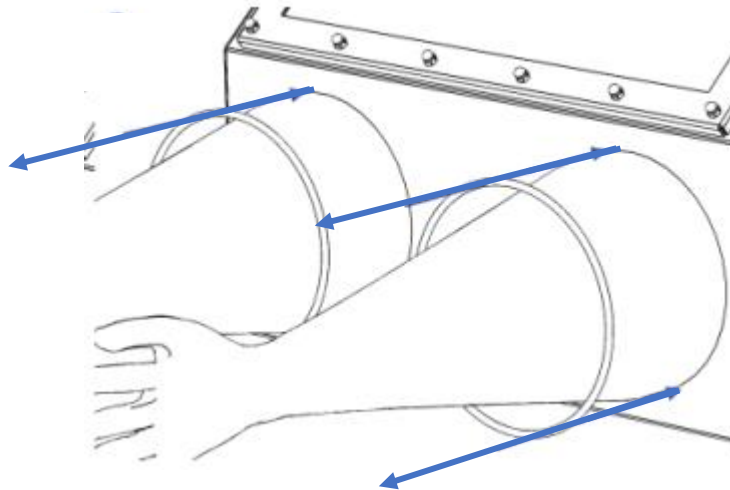


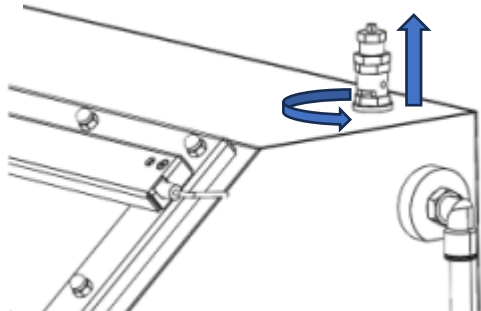
Preparing your Glove Box for Return

- Remove the gas inlet and outlet pipes.
- Wipe the inside surface of the glovebox to remove any contaminants.
- Remove both glove O-rings and gloves.

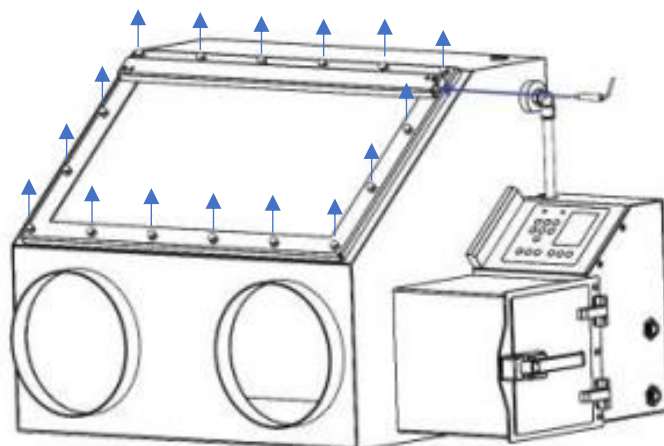


- Remove the glass window – steps below and Figure 1.0.
 1. Remove the pressure relief valve.
 2. Unscrew and remove all the domed nuts and spring washers around the metal window frame.
 3. Remove the metal frame and top gasket.
 4. Remove the glass window.
 5. Replace the top gasket and metal window frame.
 6. Use four domed nuts (one on each corner) to secure the frame to the case.

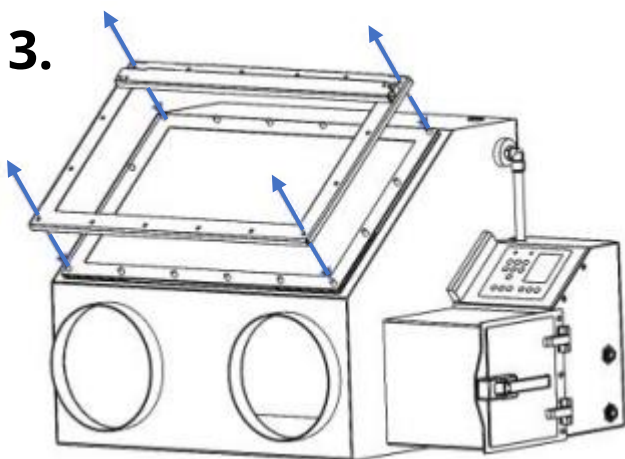
1.



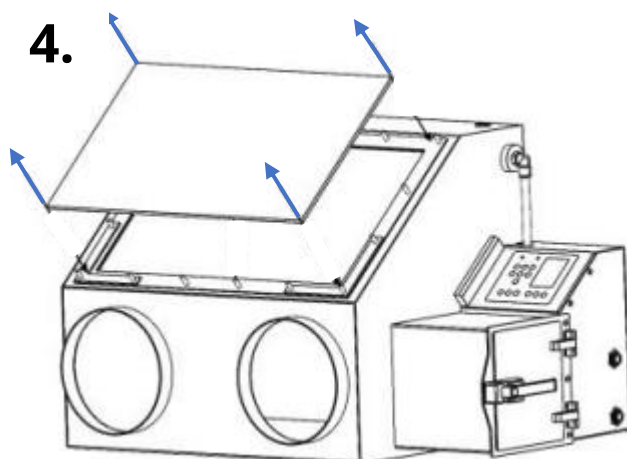
2.



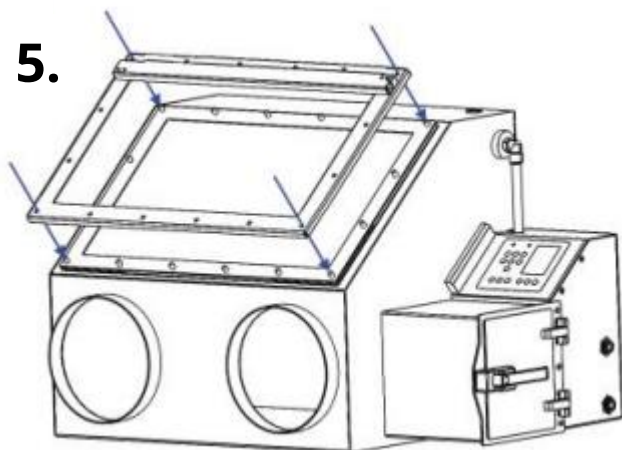
3.



4.



5.



6.

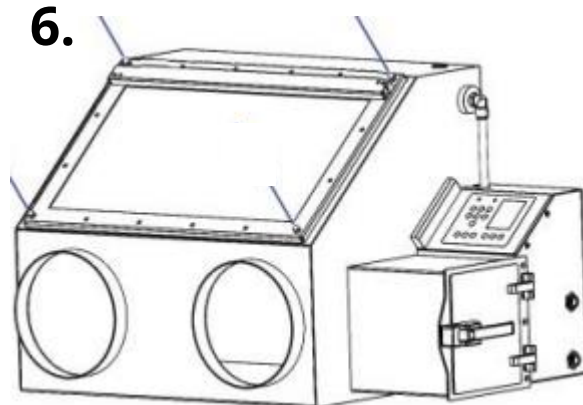


Figure 1.0 Removing the window.

Packing the box

7. Place the items listed below into the Ossila branded accessories box (if available). If not use a suitable sized sealable bag or box.

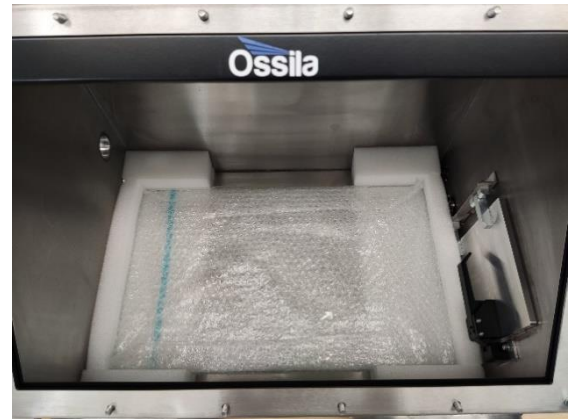
Items to be returned:

- Glove Box
 - Power Supply
 - Power Cable
 - 1 x Pack of domed nuts and spring washers
 - 2 x Butyl rubber gloves
 - 2 x O-rings
 - 1 x Pressure relief valve
-
8. Wrap the glass window in bubble wrap or suitable protective material to protect it from breaking during shipping.
 9. If you have all the original packaging pack the glove box, glass and accessories - Figure 1.1. If you do not have the original packaging, see Figure 1.2 for how to pack your glove box.

Note: The glass should be held securely with no movement.



- Place the foam pieces inside the bottom edges of the unit.



- Place the bubble-wrapped glass into the recess.



- Place the foam piece on top of the glass.



- Push the Accessories Box into the foam window, resting on the glass.

Figure 1.1 Packing the glass and accessories.



- Place the foam piece into the bottom of the box.



- Use a two person lift to lower the unit into the box.



- Place the foam pieces into the box, as shown above.
- Use tape to seal along the centre of the box as well as adding additional tape to the sides and across the middle of the box.



- I. Use a suitably sized strong cardboard shipping box (suitable for > 40 kg) which provides space between the outer box and the unit. Tape along the centre of the box, as well as adding additional tape to the sides and across the middle of the box.



- II. Add a layer of packaging void fill (or similar packing material) to the base of the box.
- III. Use a two person lift to lower the unit into the box.
- IV. Place the wrapped glass window flat inside the glove box case, place the accessories bag/box on top of the wrapped glass.
- V. Use void fill (or similar packaging material) to fill the empty space inside the shipping box – ensure the glove box is protected well.
- VI. Seal the top of the box as in the above image.

Figure 1.2