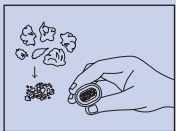
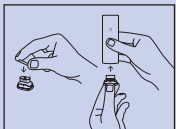


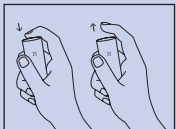
First Session



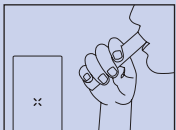
- 1 Flower: Grind material and pack tightly into oven.



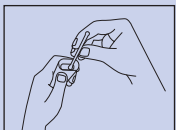
- 2 Concentrates: Remove oven screen. Open concentrate chamber lid. Place material within circle. Close lid, and place insert into oven.



- 3 Press and release mouthpiece to power on your PAX PLUS.

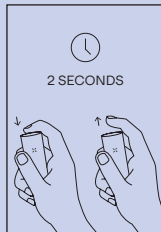


- 4 Wait for "X" to turn green. Enjoy. Remember: sip don't rip.



- 5 Use included maintenance kit to clean device every 3-5 uses. Visit pax.com/support for tips.

Experience Modes



With device powered on, long-press mouthpiece for 2 seconds and release.

Use short presses to cycle through Experience Modes.

To select a Mode, long-press mouthpiece again or simply shake your PAX PLUS.



STEALTH MODE

Produces minimal vapor; dims LEDs and vibration settings for discreet sessions.



EFFICIENCY MODE

Conserves material for longer lasting sessions.



FLAVOR MODE

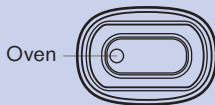
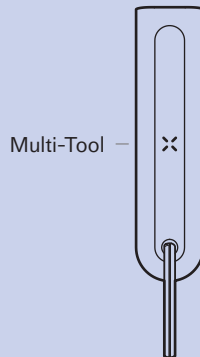
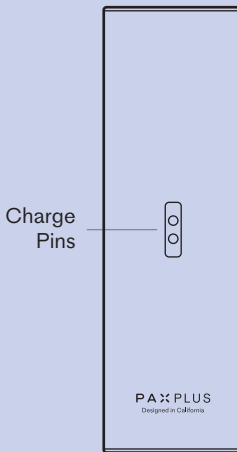
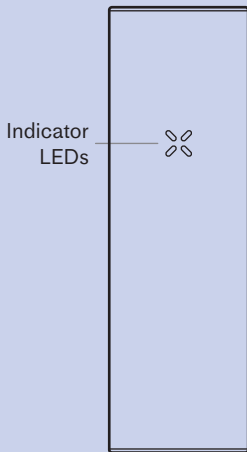
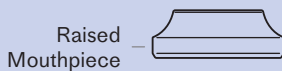
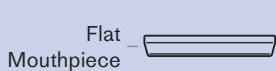
Delivers a balance of flavor and vapor throughout your sessions.



BOOST MODE

Provides maximum vapor production, ideal for concentrates.

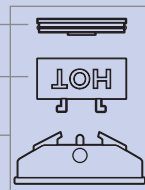
Device Anatomy



Chamber Lid & O-Ring

Concentrate Chamber

Concentrate Insert



Read all the safety information included before using this device.