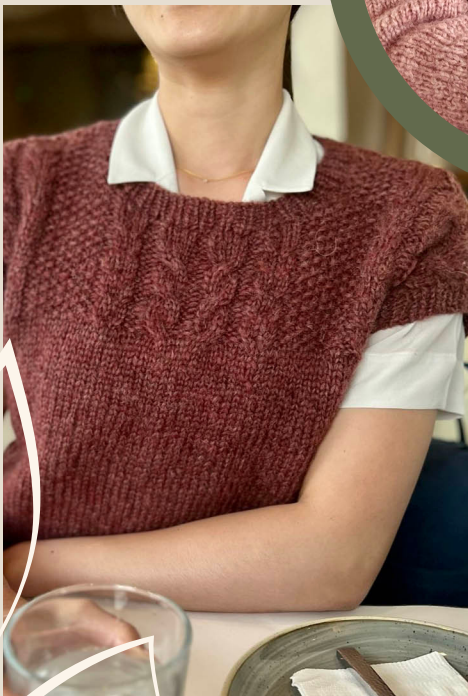


MATTHEW PULLOVER

by Aimee Sher



*A menswear-
inspired gansey
with a simple
cable and seed
stitch texture to
bring it into the
modern age.*



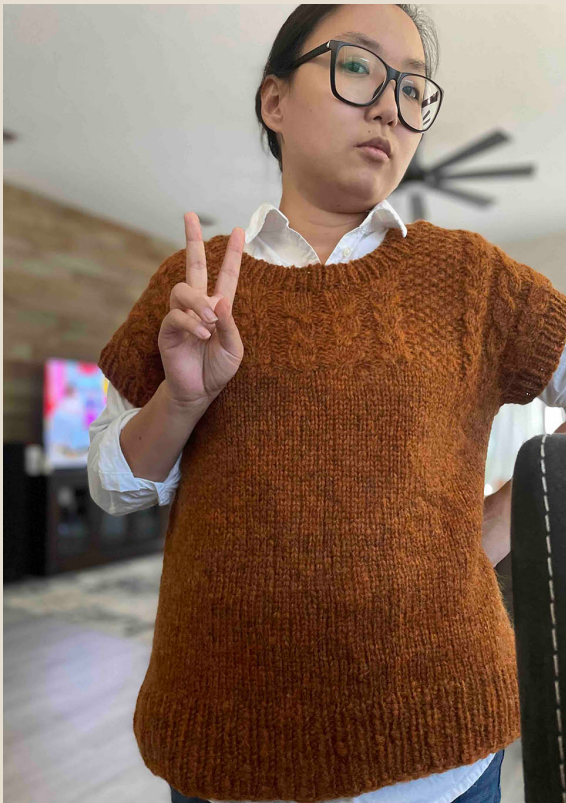
Top Left: Jess
Top Right: Megan knit Size B
Center: Shreya knit Size D
Bottom Left: Sharon knit Size B
Bottom Right: Kristen knit Size E



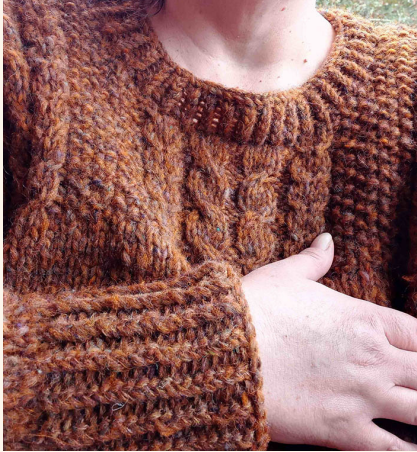


Stephanie knit Size D





- Top Left:** PM knit size C
- Top Middle:** Annie knit Size B
- Top Right:** Patty knit Size F
- Bottom Left:** Yen knit Size B
- Bottom Right:** Sebastian knit Size H



Mariana knit Size F



Kathryn knit Size E with 2" bust darts



Alice knit Size A



Kristina knit Size C



Brianna knit size H



Top Right: Jonna knit Size E
with 1" bust darts
Top Left: Katie knit Size B
Bottom Left: Serena knit
Size A





Becky knit Size E





Irene knit Size C with 2" bust darts

Purchase Now



[Website](#)

[Ravelry](#)