

**ProGear**

*ALL-NEW*

*The* **PROFESSIONAL**  
**TopSide Creeper**

**Assembly and Usage Instructions**



The ProGear TopSide Creeper provides safe and productive access to the engine compartment. The new ProGear model is wider, reaches higher and can access more of the vehicle due to the unique I-Base Design.

2800 Bryan Road; Van Buren, AR 72956

T 479-474-3460 F 479-431-6875

## Parts



Padded Deck Hinge Pins



Cable Management Pigtails

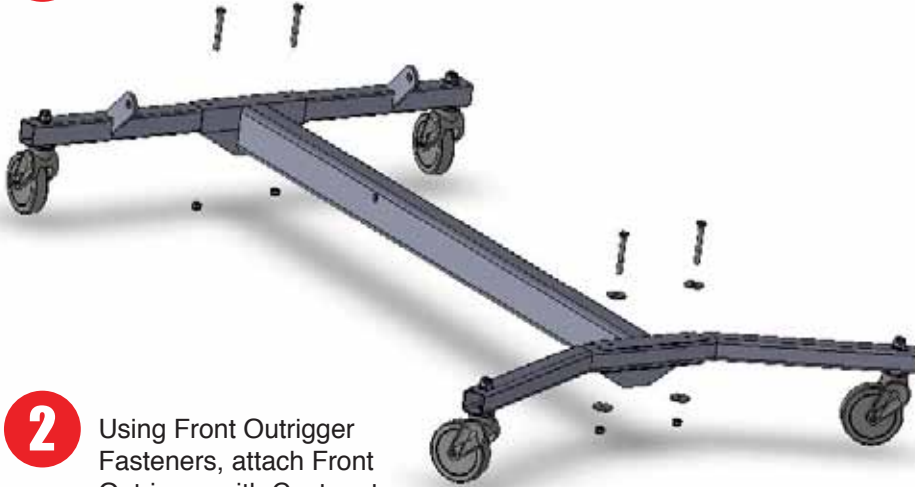


Rear Outrigger Fasteners



## Assembly

- 1 Using Rear Outrigger Fasteners, attach Rear Outrigger with Casters to the I-Base bracket that is closest to the Triangle Brace pin hole



- 2 Using Front Outrigger Fasteners, attach Front Outrigger with Casters to the other end of the I-Base. Make sure that the outriggers angle away from the I-Base. Be sure to use the fender washers as shown here.



- 3 Using Ladder Assembly Fasteners, attach the Lower Ladder Section onto the steel "ears" of the rear outrigger.



## Assembly

- 4** With the Lower Ladder Section folded down, slide the Upper Ladder Section into the channels of the Lower Ladder Section. Slide it all the way in.



- 5** Assemble the cable management system by first threading the stop-nut onto the threaded end of the Pigtail.

Next thread the pigtails into the two connection points on the right side of the ladder. Thread in at least six turns.

Once satisfied with the placement of the Pigtails tighten the stop-nut against the threaded connector.

## Usage

### Adjusting the Height

Picture 1



Picture 2



Pivot the ladder section straight up and down as in Picture 1. Make sure the Triangle Brace is also hanging straight up and down.

Adjust the sliding Upper Ladder Section to the desired height. Locate the height adjustment hole as shown in Picture 2.

Pivot the ladder section forward. Make sure the locking tab at the top of the Triangle Brace slots into the height adjustment hole.

Pin the bottom of the Triangle Brace to the I-Beam as shown in Picture 3.

Picture 3



### **IMPORTANT**

It is very important that you secure the base with the locking pin. Without the locking pin the ladder sections could collapse.

## Usage

### Adjusting the Deck

The ProGear Topside Creeper folds flat and compact for easy storage. The padded deck can also be secured in two locations. The traditional location as seen in Picture 1 and the upright location as shown in Picture 2.

The traditional setup allows safe and productive access to the topside of an engine compartment. The upright position provides access to the sides and top of taller vehicles and aircraft for body work, cleaning and many other tasks.

To secure the deck rotate to the desired position and slide the pin through the deck hinge.

Picture 1



Picture 2

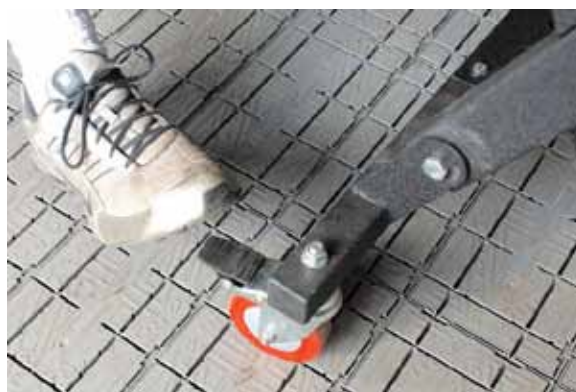


### Locking the Casters

The ProGear Topside Creeper features locking casters that allow the user to exert leverage on the job below.

To lock the casters simply step on the locking mechanism on the front of the caster as shown here.

To unlock kick the lever up and you are off and rolling.



### Cable Management

ProGear Cable Management keeps cables and hoses clear from your work. Easily secure by rotating around the Pigtail.



## Safety and Maintenance

---

# For Your Safety PLEASE READ CAREFULLY

**THIS IS NOT A LADDER. THIS IS A TOOL TO REACH THE TOPSIDE OF ENGINES FOR MAINTENANCE.**

### INSPECTION

Inspect upon receipt and before each use. Never climb on the Topside Creeper if damaged, bent or broken.

Make sure all joints, nuts and bolts are tight. Make sure locking pin is securely in place before climbing.

Keep the Topside Creeper clean, from grease, oil and other slippery material. Make sure shoes are clean;. Do NOT wear leather soled shoes.

Never make temporary repairs of damaged or missing parts.

### PROPER SETUP

Make sure the Triangle Brace is pinned to the I-Beam before using the ProGear Topside Creeper.

Make sure the padded deck Hinge Pins are fully inserted through both sides of the hinge.

### PROPER USE

**DO NOT USE THE PROGEAR TOPSIDE CREEPER** if you tire easily or are subject to fainting spells or if you are using medicine or alcohol or are physically handicapped.

Face the Topside Creeper when climbing up or down. Keep body centered between side rails and use both hands while climbing.

Never stand on the Topside Creeper deck.

Do no overload the Topside Creeper. It is designed for only one person use.