

STEEL PIPE NIPPLES

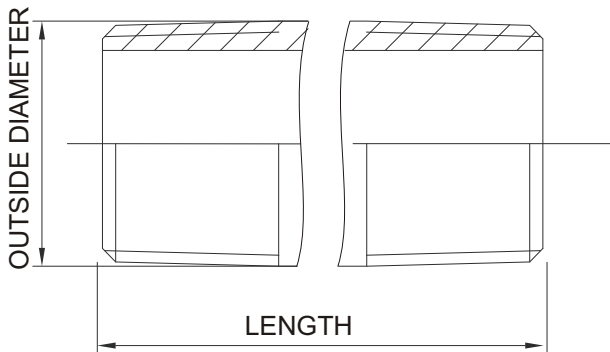


Material: ASTM A53/A106/A333
 Sch. 40 ERW (Welded) Grade 'A' Pipe
 Sch. 80 Seamless grade 'B' Pipe

Dimensions: ASTM A733

Threads: ASME B1.20.1 NPT

Most but not all products represented in this document are FM Approved.
 For listing/approval details and limitations, please contact your Sales Representative or visit <https://www.approvalguide.com>



Size	O.D.	Length Close	Steel Pipe Nipples																							
IN	IN	IN	Nipples Length																							
1/8	0.405	0.750	1 1/2	2	2 1/2	3	3 1/2	4	4 1/2	5	5 1/2	6	7	8	9	10	11	12	18	24	30	36	48	60	72	
1/4	0.540	0.875	1 1/2	2	2 1/2	3	3 1/2	4	4 1/2	5	5 1/2	6	7	8	9	10	11	12	18	24	30	36	48	60	72	
3/8	0.675	1.000	1 1/2	2	2 1/2	3	3 1/2	4	4 1/2	5	5 1/2	6	7	8	9	10	11	12	18	24	30	36	48	60	72	
1/2	0.840	1.125	1 1/2	2	2 1/2	3	3 1/2	4	4 1/2	5	5 1/2	6	7	8	9	10	11	12	18	24	30	36	48	60	72	
3/4	1.050	1.375	1 1/2	2	2 1/2	3	3 1/2	4	4 1/2	5	5 1/2	6	7	8	9	10	11	12	18	24	30	36	48	60	72	
1	1.315	1.500	1 1/2	2	2 1/2	3	3 1/2	4	4 1/2	5	5 1/2	6	7	8	9	10	11	12	18	24	30	36	48	60	72	
1 1/4	1.660	1.625		2	2 1/2	3	3 1/2	4	4 1/2	5	5 1/2	6	7	8	9	10	11	12	18	24	30	36	48	60	72	
1 1/2	1.900	1.750		2	2 1/2	3	3 1/2	4	4 1/2	5	5 1/2	6	7	8	9	10	11	12	18	24	30	36	48	60	72	
2	2.375	2.000		2	2 1/2	3	3 1/2	4	4 1/2	5	5 1/2	6	7	8	9	10	11	12	18	24	30	36	48	60	72	
2 1/2	2.875	2.500			2 1/2	3	3 1/2	4	4 1/2	5	5 1/2	6	7	8	9	10	11	12	18	24	30	36	48	60	72	
3	3.500	2.675				3	3 1/2	4	4 1/2	5	5 1/2	6	7	8	9	10	11	12	18	24	30	36	48	60	72	
4	4.500	2.875				3	3 1/2	4	4 1/2	5	5 1/2	6	7	8	9	10	11	12	18	24	30	36	48	60	72	
6	6.625	3.125					3 1/2	4	4 1/2	5	5 1/2	6	7	8	9	10	11	12	18	24	30	36	48	60	72	