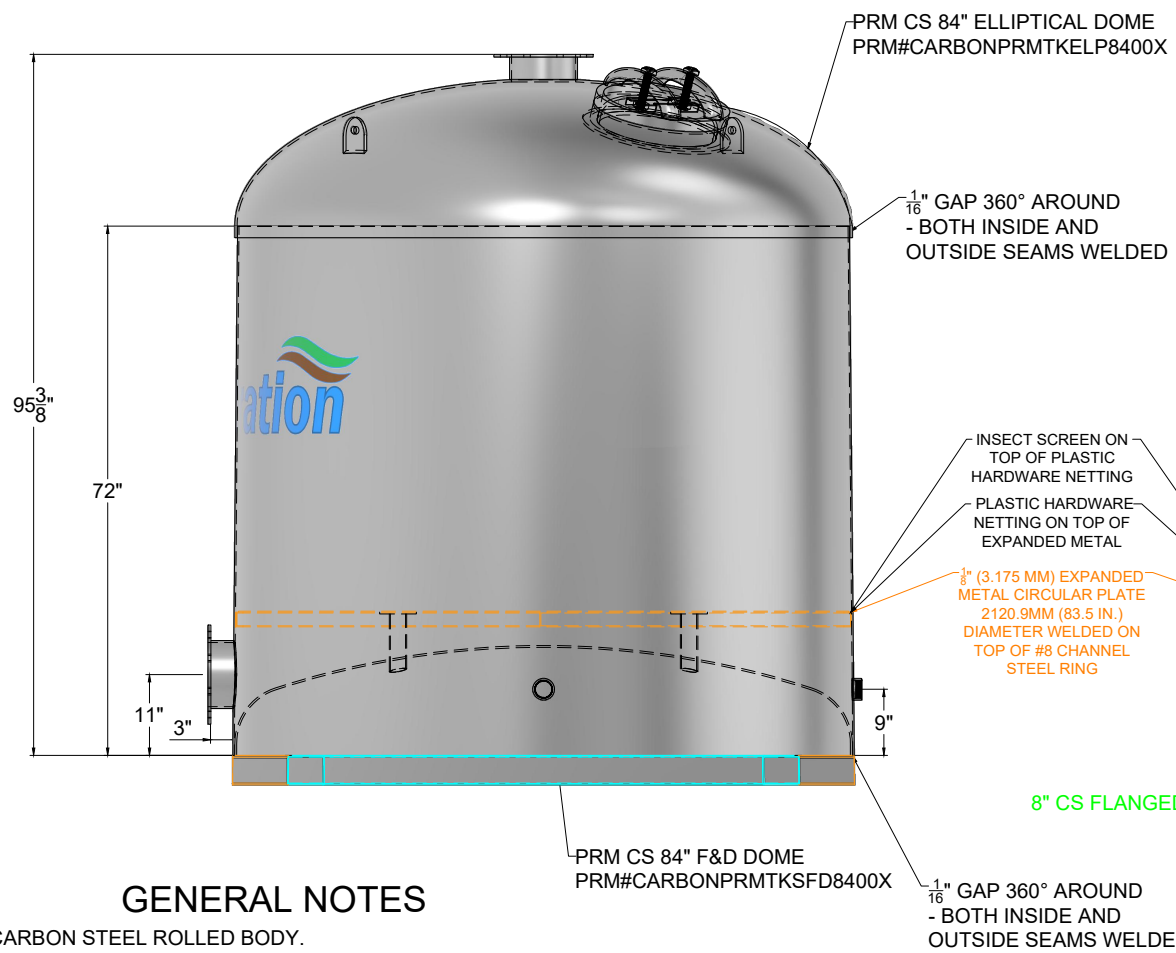
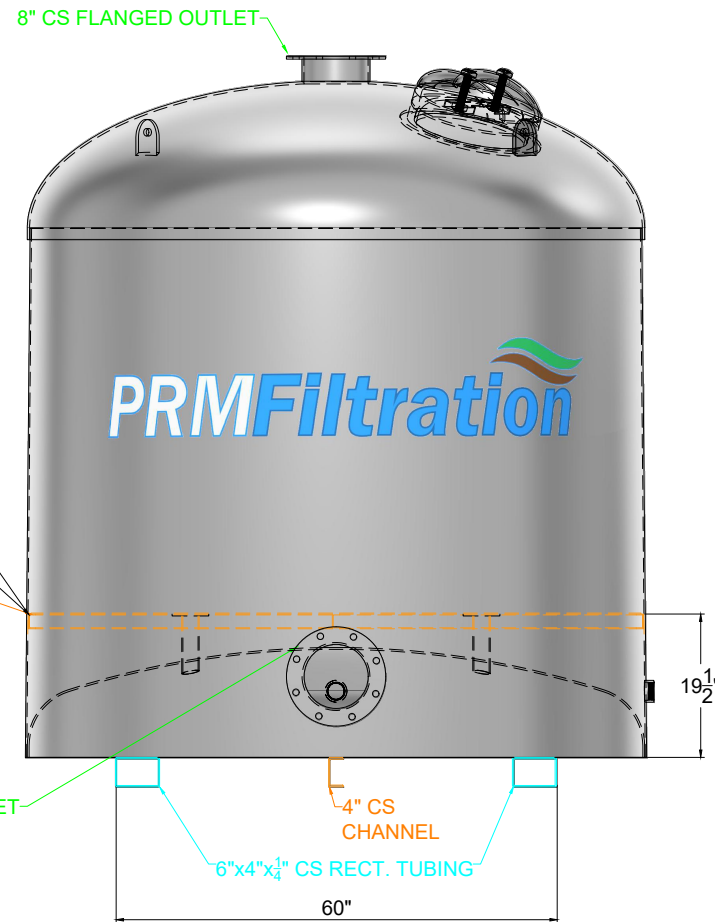


RIGHT ELEVATION DETAIL



FRONT ELEVATION DETAIL



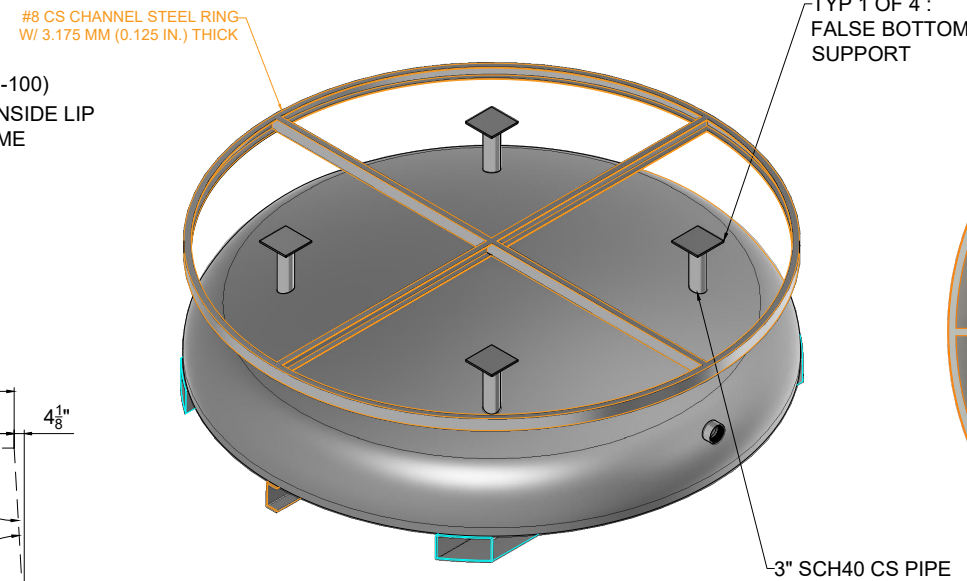
ISOMETRIC DETAIL



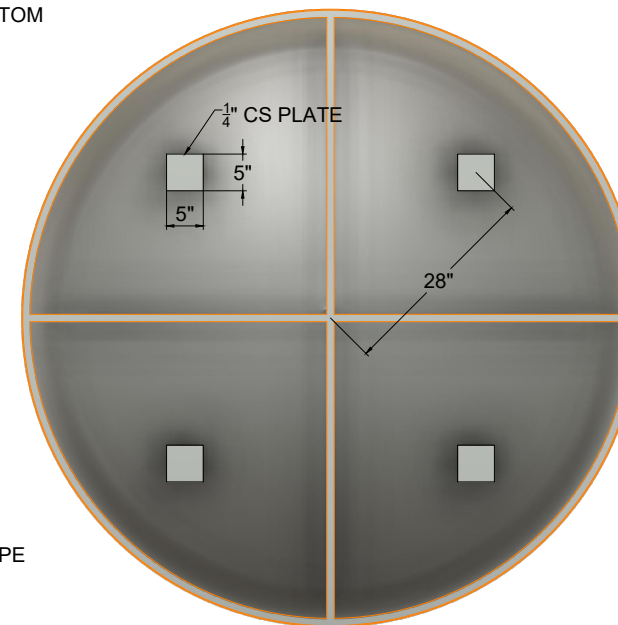
GENERAL NOTES

- 3/16" CARBON STEEL ROLLED BODY.
- 3" FLANGES ON INLET AND OUTLET SIZED AS SHOWN (150# BOLT PATTERN).
- 2" CARBON STEEL ROLLED CHANNEL RING TO FIT THE ID OF THE VESSEL.
- 2" CARBON STEEL CHANNEL FOR CROSS BRACING TO SUPPORT THE EXPANDED METAL FLOOR.
- PAINT AS FOLLOWS:
 - PRIMER: EPOXY PRIMER (HBE-400)
 - BATTLESHIP GREY ACRYLIC URETHANE FINISH (AUE-100)
- SHELL DIMENSION BELOW PROVIDES 1/16" GAP BETWEEN INSIDE LIP OF UPPER DOME AND OUTSIDE SURFACE OF LOWER DOME
- MODEL LINK: <https://a360.co/3pc4mdd>

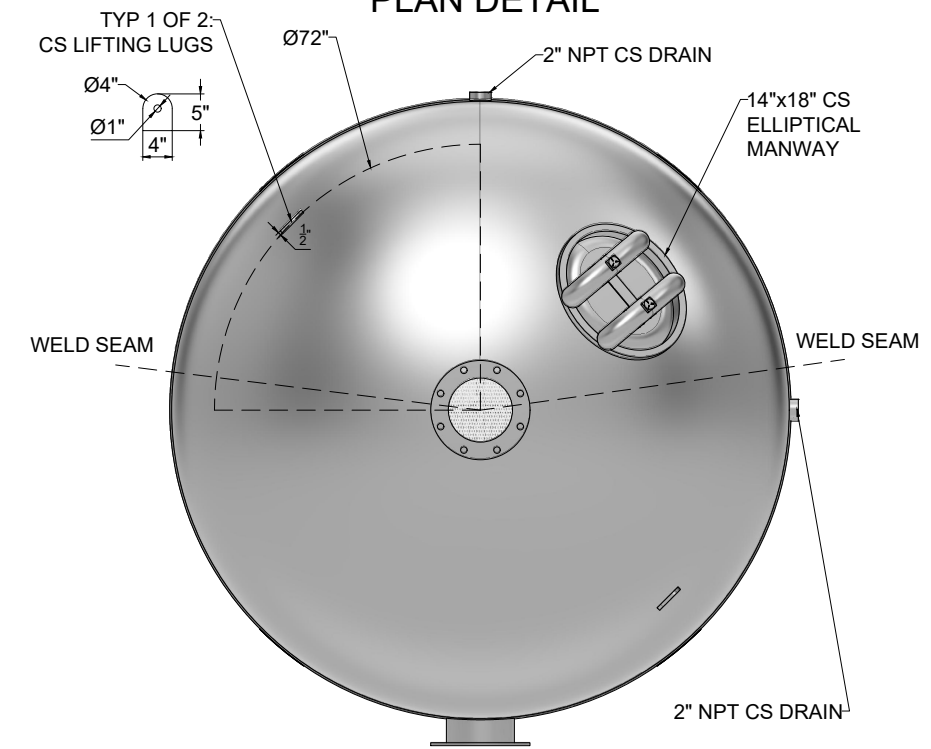
FALSE BOTTOM SUPPORT ISOMETRIC DETAIL



FALSE BOTTOM SUPPORT PLAN DETAIL



PLAN DETAIL



SHELL FLAT DETAIL
SCALE 1:3

