

MONITORING & ALERTING

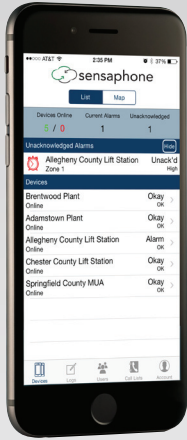
HOW LONG BEFORE YOU KNOW SOMETHING IS WRONG?

COUNTLESS INDUSTRIES DEPEND ON SENSAPHONE FOR THE MOST COMPREHENSIVE REMOTE MONITORING SOLUTIONS AVAILABLE. WHEN YOU NEED TO BE ABSOLUTELY SURE A REMOTE SITE IS STABLE, SECURE, AND MONITORED AROUND THE CLOCK, THERE'S NO SUBSTITUTE FOR CERTAINTY.



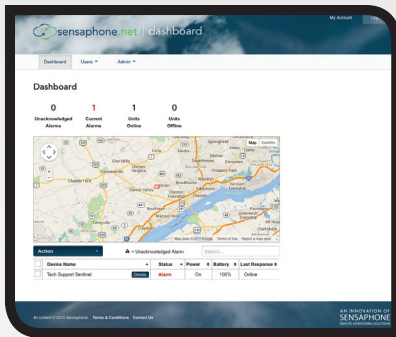
CLOUD-BASED MONITORING... WITH MODBUS CAPABILITIES

- **Supervised** internet connection assures the Sentinel Pro is online and monitoring at all times
- **Manage** an unlimited number of devices from one account
- **Monitor** up to 64 Modbus registers and 12 digital or analog status conditions
- **Receive** an e-mail, phone call, or text message when an alarm is detected
- **Real time** status updates available
- **Included** battery backup
- **Cellular** coverage available from AT&T and Verizon



ENVIRONMENTAL MONITORING FOR THE MOBILE AGE

The cloud-based Sentinel Pro allows you to monitor remote facilities and environments and check critical conditions of your sensitive commodities with the same degree of certainty you've come to expect from Sensaphone. It takes the burden out of managing your system by giving you access to your readings from anywhere using a simple, powerful web-based interface and mobile app. If there's a disruption, you'll be the first to know. Alerts can be sent straight to your mobile device—keeping you updated and giving you peace-of-mind wherever you are.



IN THE CLOUD

The Sentinel system stores all sensor readings in the cloud, which provides unlimited information storage. Multiple devices can be managed from one account using intuitive web-based management tools. Enhanced data logging capabilities allow users to print, graph or export accurate historical records. The Sentinel Pro system also can produce event reports and deliver them daily via e-mail, as well as generate an audit trail of all user data activities, edits or deletions. The device is Ethernet based, but it is available with a cellular option for locations that do not have Internet access.



TECHNICAL SPECS

Inputs: Twelve hard-wired inputs accept NO/NC dry contacts, temperature sensors, and 4-20mA

Temperature sensing range: -109° to 168°F (-85° to 76°C)

Outputs: Two relay outputs rated at 30 VAC/VDC 1 Amp, manual or automatic switching

Modbus®: Up to 64 registers can be monitored, supports Modbus RTU RS485 and Modbus TCP

Communication: 10/100 BASE-T with SSL encryption (HTTPS)
RS485 Two-wire with termination option,
9600 - 115,200 bps

User Interface: Sensaphone.net website,
Sensaphone App (iPhone & Android)

Alarm Delivery & Datalogging:
Voice calls, text messaging, email -
flexible scheduling and customization
Datalogging - All Inputs & Modbus
registers, 1 min to 1 month sampling,
cloud storage

Power & Battery Backup: Powered by
12VDC power supply with internal 8-hour
battery backup included.

Physical: Rugged metal enclosure, 6.8" x
6.3" x 1.7" (173 x 76 x 43 mm), 1.5 lbs. (680
gm)

Operating Temperature: 32-122° F
(0-50° C)



SENSAPHONE® 901 TRYENS ROAD • ASTON, PA 19014
PH: 888-369-4781 • F: 610-558-0222 • WWW.SENSAPHONE.COM