

RT-6039 300 CFM Biogas Flare



PRM rental flare extraction system for landfill and biogas applications.

Features:

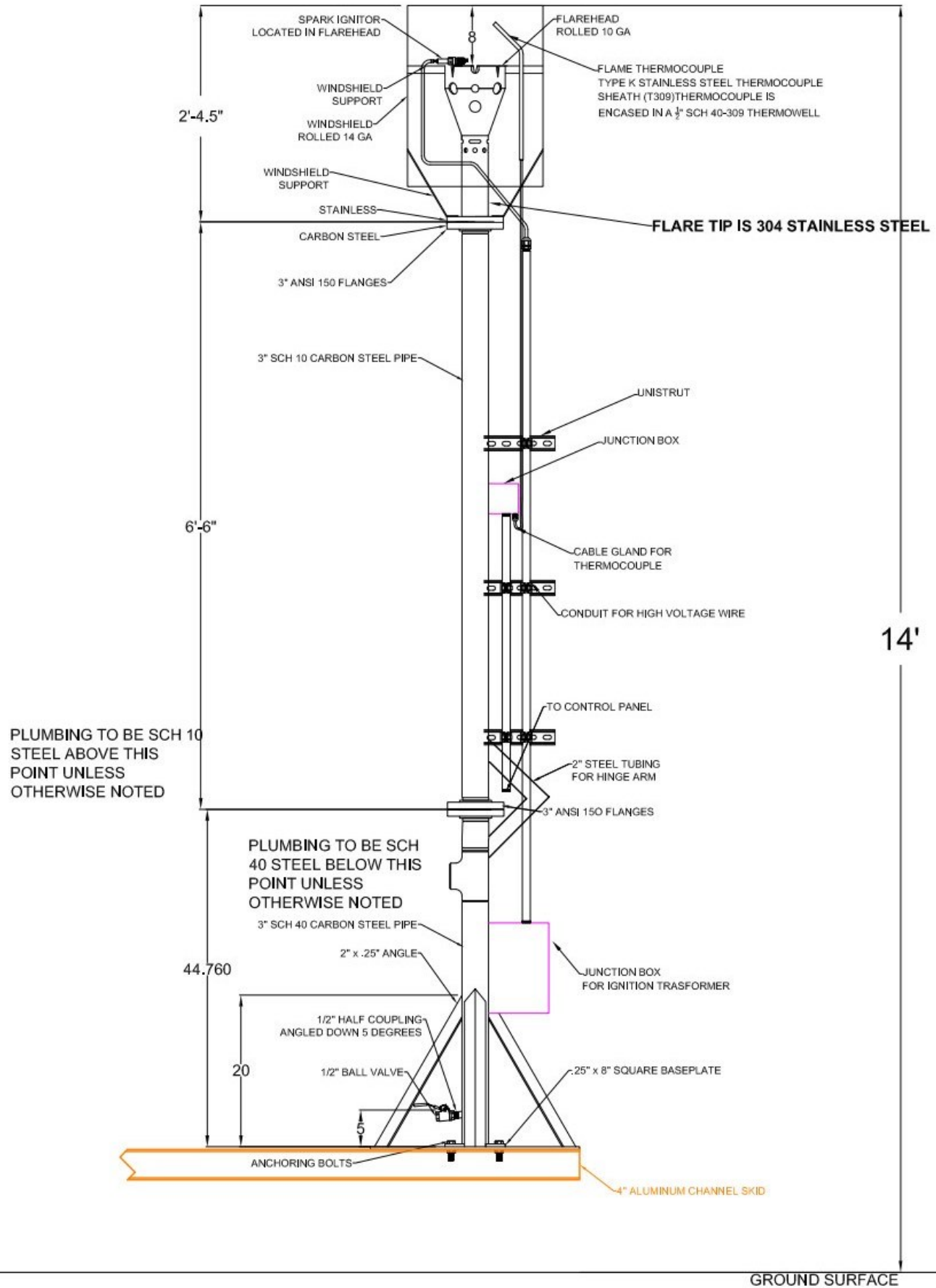
- 300 CFM Candlestick Utility Flare rated for 10:1 turndown, mounted on skid with hinge for raising flare onsite or lowering for transport 304 Stainless Steel
- Gast LFG Regenerative Blower
- Stainless Steel Wind Shroud for High Temperature Stability
- ASME B16.5-2003 Design
- PRM MS-80 Moisture Separator
- High Energy Gas Assist Ignition Package with thermocouple for temperature control and monitoring
- UL Listed System Control Panel
- Destruction Efficiency >98%
- Fully factory assembled and tested
- Designed to meet state and federal emission standards for Landfill Gas disposal required in EPA 40CFR , 60.18.
- Flares are designed in accordance with AP-42 standards
- 5' x 8' Aluminum Channel Skid



**Short or Long Term Lease Options or
Purchase Available!**

Contact PRM for Details

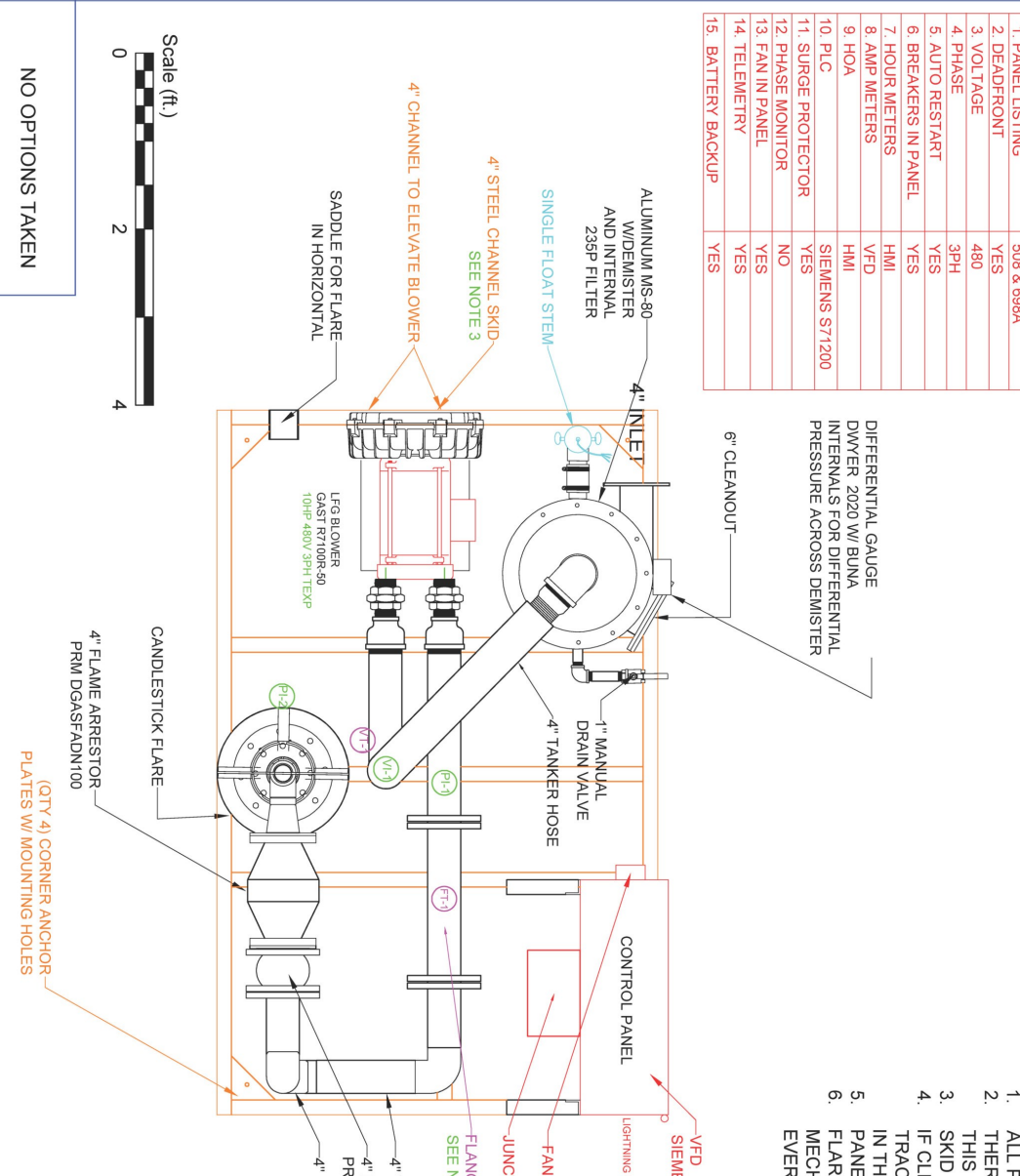
(888-TREAT-IT) • www.prmfiltration.com • sales@prmfiltration.com



CONTROL PANEL

1. PANEL LISTING	508 & 698A
2. DEADFRONT	YES
3. VOLTAGE	480
4. PHASE	3PH
5. AUTO RESTART	YES
6. BREAKERS IN PANEL	YES
7. HOUR METERS	HMI
8. AMP METERS	VFD
9. HOA	HMI
10. PLC	SIEMENS S71200
11. SURGE PROTECTOR	YES
12. PHASE MONITOR	NO
13. FAN IN PANEL	YES
14. TELEMETRY	YES
15. BATTERY BACKUP	YES

8' x 5' SKID PLAN DETAILS



- ### GENERAL NOTES
1. ALL PROCESS PIPING SHALL BE AT LEAST 18" FROM CONTROL PANEL
 2. THERE ARE ROUGHLY 5 PIPE DIAMETERS OF STRAIGHT PIPE PRIOR TO THIS THERMAL MASS FLOWMETER, AND 4 PIPE DIAMETERS AFTER SKID IS EPOXY-PRIMED AND URETHANE-COATED
 3. IF CLIENT NEEDS WINTERIZATION, CLIENT SHOULD CONSIDER HEAT TRACING THE BOTTOM OF THE TANK ONSITE. PRM COULD ALSO DO THIS IN THE SHOP AS A CHANGE ORDER.
 4. PANEL IS OUTDOOR-RATED COATED CARBON STEEL
 5. FLARE STACK IS HINGED AND REQUIRES ADEQUATE PERSONNEL AND/OR MECHANICAL LIFTING TO BE RAISED OR LOWERED. UNIT SHOULD ONLY EVER BE OPERATED BY PROPERLY TRAINED PERSONNEL.

PRM PARTS LISTS

PRM PARTS	DESCRIPTION	PRM #
VI-1	150"-0" WC SS VACUUM GAUGE	PGCNBTY63065210HG
PI-1	0-150" WC SS PRESSURE GAUGE	PGCNBTY630151150PSI
PI-2	0-80" WC PRESSURE GAUGE	PGCNBTU63045280WC
VT-1	0-30" HG VACUUM TRANSMITTER	PT100030HGX
FT-1	THERMAL MASS FLOWMETER	FMPHILEMON400164824VDC



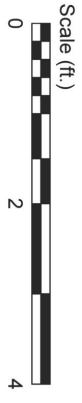
Product Recovery Management Inc.
This information is proprietary and confidential.
No copies or reproductions allowed without the
express written consent.

CLIENT: PRODUCT RECOVERY MANAGEMENT
200 20th ST
BUTNER, NC 27599

PROJECT TITLE: RENTAL FLARE SKID

SHEET TITLE: PLAN VIEW OF SKID

QUOTE NUMBER	PROJECT NUMBER	NO. OF REVISIONS	DATE	DRAWING NUMBER
6/06/2019	WO-5597	0 ORIGINAL	02/05/19	M-1
	RIVERO	2		



NO OPTIONS TAKEN