

## RT-5848 Rental AS/SVE Trailer

### SVE and Air Sparge Extraction System - 8.5' x 20' enclosed trailer

#### SVE Capabilities:

- ZZ6M Rotary Lobe Vacuum Blower
- 338 SCFM @ 143" WC
- 20 HP 230V 3ph TEFC motor

#### Air Sparge Capabilities:

- Rietschle DLR-401 Rotary Claw Compressor
- 212 SCFM @ 19 psig
- 25 HP 230V 3ph TEFC motor
- (17) 1" Sparge Legs with Rotameters

#### Controls:

- NEMA 4/12 UL Listed 3rd Party Certified Control Panel
- PLC Controller with wireless connectivity and remote login
- SCADA full remote system control with data and event logging

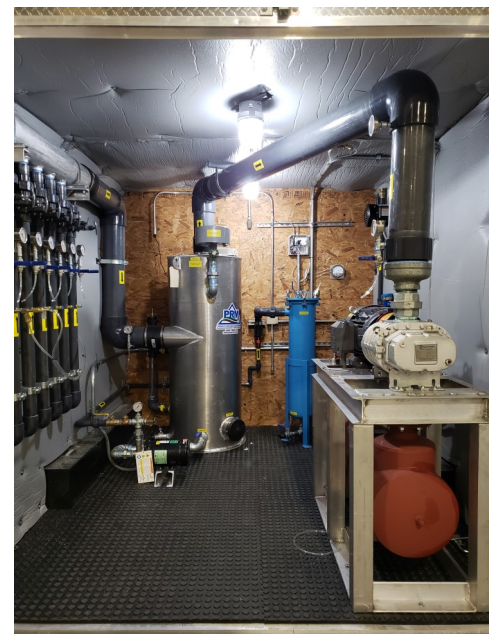
#### System Rating:

- 120/240V, 3 phase, 200 Amps

#### Vapor Phase Carbon Vessels:

- PRM VP-55 Vapor Phase Carbon Vessels

Interior of Process room rated for Class 1,  
Division 2 Hazardous Locations



Short or Long Term Lease Options or  
Purchase Available!

(888-TREAT-IT) • [www.prmfiltration.com](http://www.prmfiltration.com) • [sales@prmfiltration.com](mailto:sales@prmfiltration.com)

