

RT-5191 Rental AS/SVE Trailer

SVE and Air Sparge Extraction System - 8.5' x 16' enclosed trailer

Features:

- SVE Capabilities: 875 SCFM @ 61" WC
- AS Capabilities: 70 SCFM @ 20 PSI
- System Rating: 120/230 V, 3 phase, 200 Amp, UL Listed System
- Acoustically Insulated for Noise Control

Controls

- NEMA 4 control panel
- PLC Controller with wireless connectivity and remote login
- Interface with full SCADA remote system control and data and event logging

SVE Package

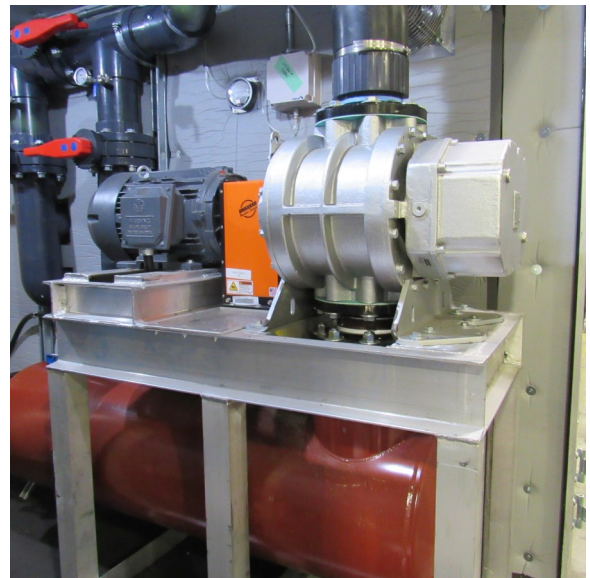
- Eurus ZZ7M Rotary Lobe Vacuum Blower
20HP Hazardous Location Motor rated for >875 SCFM @ 61" WC
- MS-200 Aluminum Moisture Separator
- (5) 2 Inch Legs with control valve, vacuum gauge, sample port, mounted on header pipe
- Carbon bypass manifold so blower can pull through carbons

Air Sparge System

- Rietschle DLR 100 Rotary Claw Compressor rated for 65 SCFM @ 20 PSI
- Integrated Inlet Filter Silencer
- Heat Exchanger plumbed inline
- (5) 1 Inch Sparge Legs with check valves, pressure gauges, control valves, and rotameters

Carbon Units

- (4) VP-55 Vapor Carbon Vessels
- 800 lbs. of GAC



**Short or Long Term Lease Options or
Purchase Available!**

Contact PRM for Details

**8.5' x 16' TANDEM AXLE TRAILER
ENTIRE SYSTEM IS
THIRD PARTY CERTIFIED**

