

PRM offers the VP Series Square Footprint Carbon Vessel which fit nicely into a trailer or enclosure without wasted space. These units include a false bottom and distributor screen to allow for more even distribution and lower pressure drops.

VP-500 Square Vessel:

36" x 36" Wide x 60" Tall

500 lbs 4 x 10 Carbon

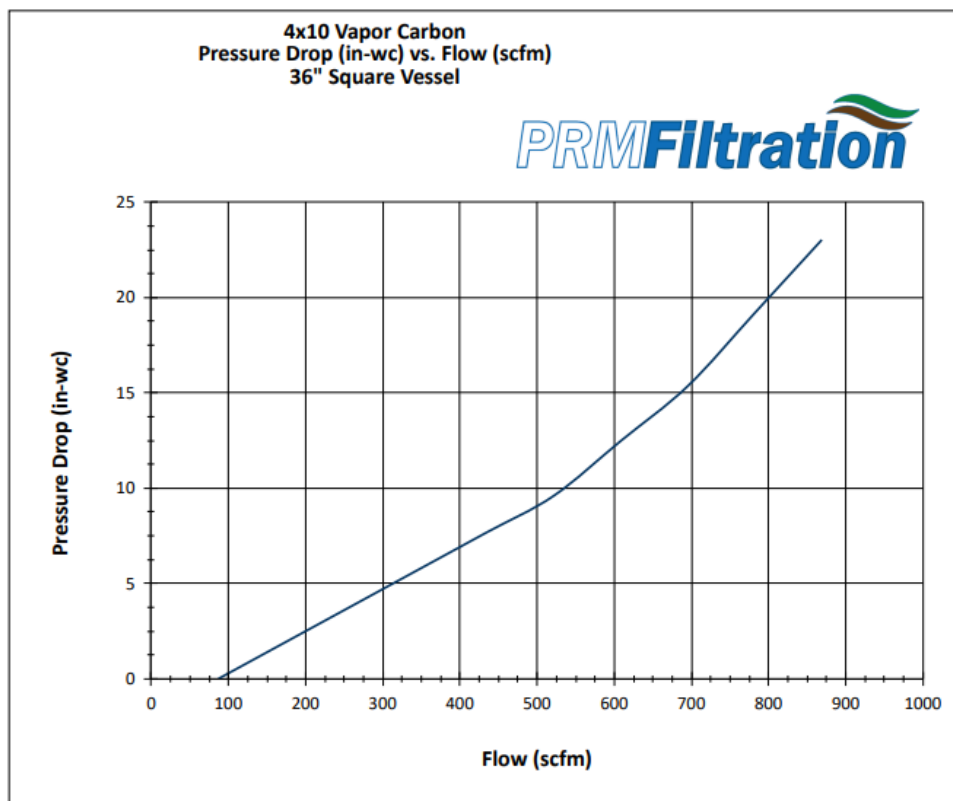
100-500 scfm Flow

4 inch Inlet/Outlet

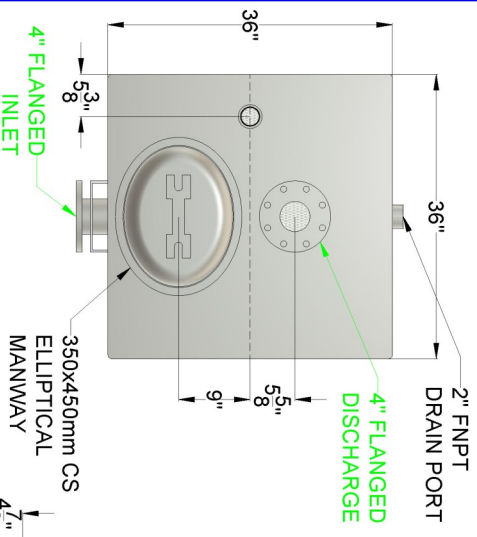


- Carbon Steel Construction
- False bottom allows for even distribution, lower pressure drop, and no channeling
- 18" Bolted Lid on top of vessel allows for easy carbon access and change-out
- Epoxy Primer with Polyurethane Top Coat
- Forklift Pockets for easy mobility

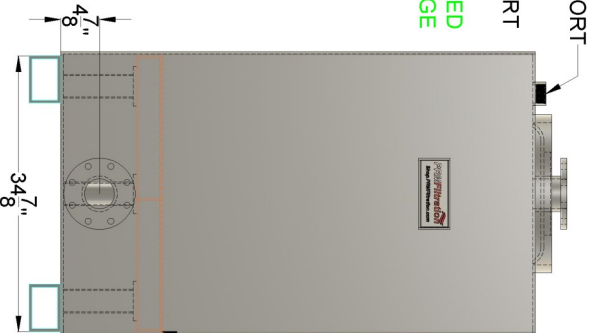
PRM Part # MEDIAFILTKVP500X



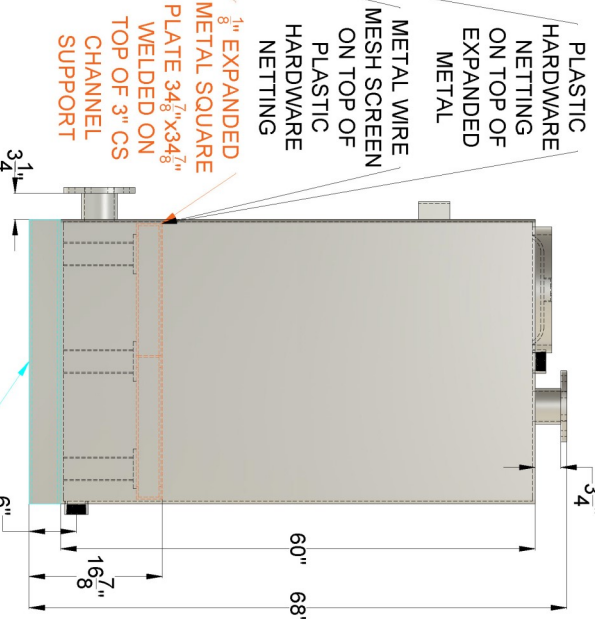
PLAN DETAIL



FRONT ELEVATION DETAIL



RIGHT ELEVATION DETAIL



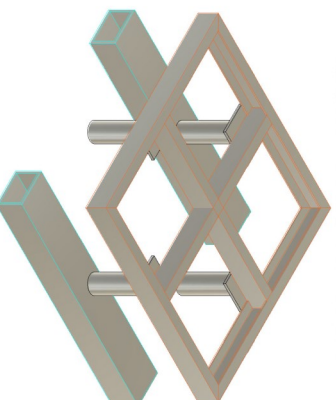
ISOMETRIC DETAIL



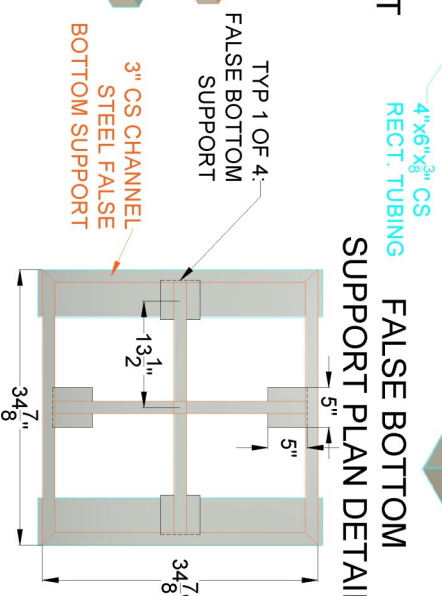
GENERAL NOTES:

1. 8mm THICK CARBON STEEL BODY.
2. 3" FLANGES ON INLET AND OUTLET SIZED AS SHOWN (150# BOLT PATTERN).
3. 3" CARBON STEEL CHANNEL SUPPORT TO FIT THE SQUARE ID OF THE VESSEL.
4. 3" CARBON STEEL CHANNEL FOR CROSS BRACING TO SUPPORT THE EXPANDED METAL FLOOR.
5. PAINT AS FOLLOWS:
 - 5.1. PRIMER: EPOXY PRIMER
 - 5.2. POLYURETHANE TOP COAT
6. FOUR SUPPORTS AT THE BOTTOM, WELDED WITH A 10mm STEEL PLATE AND A Ø76mm SCH 20 STEEL PIPE.
7. MODEL LINK: <https://a360.co/3Gsd1AP>

FALSE BOTTOM SUPPORT ISOMETRIC DETAIL



FALSE BOTTOM SUPPORT PLAN DETAIL



Product Recovery Management Inc.
This information is proprietary and confidential. No copies or reproductions allowed without the express written consent of Product Recovery Management Inc.

SHEET TITLE

SQUARED VP-500

DATE

08/15/2025

DRAWN BY

CCG

NO.	REVISION	DATE	NO.	REVISION	DATE
1			1		
2			2		
3			3		
4			4		
5			5		
6			6		
7			7		
8			8		
9			9		
10			10		
11			11		
12			12		

DRAWING NUMBER

D-1