

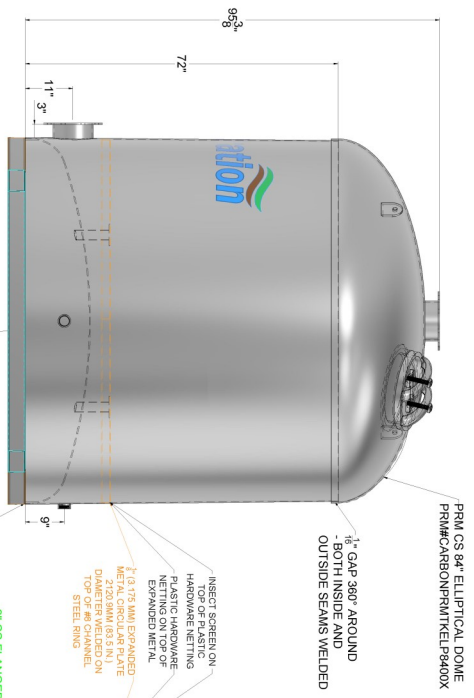
VP-5000 Carbon units are used on remediation systems to treat vapor emissions with minimal backpressure. Units are designed to prevent channeling and are sized to maximize carbon effectiveness. Typical applications are treating the off gas from remediation of VOCs, chlorinated solvents, or industrial sites with similar applications.

- 96" x 84" Vessel, Carbon Steel Shell, 8MM
- 84" elliptical dome lid, Q235B Carbon Steel, 8MM thick, cold formed
- 12" x 16" elliptical manway with bolt down cover
- 8 inch Inlet/Outlet ANSI 150# Flanged Connection
- Max. Working Pressure 14.9 PSIG
- 2 Inch FNPT Vent Port
- 2 Inch FNPT Drain Port
- (2) Lifting Lugs
- Epoxy Inside Coating
- Epoxy Primer Outside Coating with top coat of polyurethane with UV protection
- Holds 5,000 pounds +/- media (carbon and other media sold and shipped separately) based on 28 lbs. per cubic foot density
- False bottom allows for even distribution, lower pressure drop, and no channeling
- Forklift Pockets for easy mobility



**WARNING!** Any vessel that is entered for service must be done so with proper PPE, permits and all required safety precautions. Carbon and possibly other medias may deplete oxygen from the vessels in circumstances when wetted. Clients and/or owners/operators are responsible for all safety provisions. PRM is not be liable for property damage, injury or death under any circumstances.

RIGHT ELEVATION DETAIL



FRONT ELEVATION DETAIL



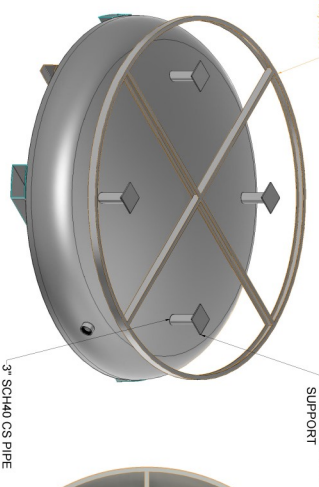
ISOMETRIC DETAIL



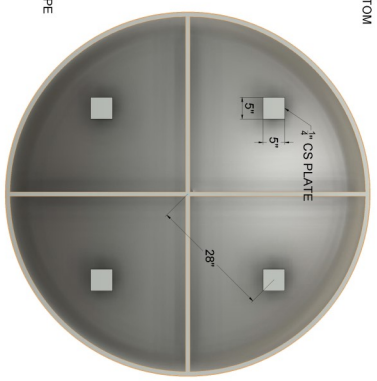
GENERAL NOTES

1. 1/8" CARBON STEEL ROLLED BODY.
2. 3/8" FLANGES ON INLET AND OUTLET SIZED AS SHOWN (150# BOLT PATTERN).
3. 2" CARBON STEEL ROLLED CHANNEL RING TO FIT THE ID OF THE VESSEL.
4. 2" CARBON STEEL CHANNEL FOR CROSS BRACING TO SUPPORT THE EXPANDED METAL FLOOR.
5. PAINT AS FOLLOWS:  
5.1. PRIMER: EPOXY PRIMER (HBE-400)  
5.2. BATTLESHIP GREY ACRYLIC URETHANE FINISH (AUE-100)
6. SHELL DIMENSION BELOW PROVIDES 1/8" GAP BETWEEN INSIDE LIP OF UPPER DOME AND OUTSIDE SURFACE OF LOWER DOME
7. MODEL LINK: <https://a390.co/dp/qd4mnd>

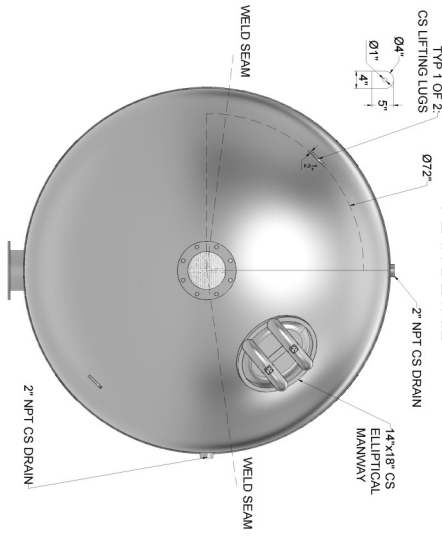
FALSE BOTTOM SUPPORT ISOMETRIC DETAIL



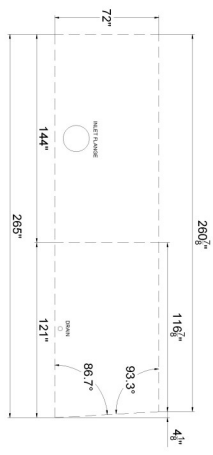
FALSE BOTTOM SUPPORT PLAN DETAIL



PLAN DETAIL



SHELL FLAT DETAIL  
SCALE 1:3



	Product Recovery Management Inc.	CLIENT:	PRM	PROJECT TITLE:	HI-VAC VP-5000	SHEET TITLE:	HI-VAC VP-5000 DETAILS	QUOTE NUMBER:	02/7/24	PROJECT NUMBER:	NDW	NO.	REVISION	DATE	DRAWING NUMBER:	D-1
	<p>This information is proprietary and not to be distributed or used without the express written consent of Product Recovery Management, Inc.</p>															

