

PRM Carbon Systems - ASME HP- 500



The HP Series Carbon units are used for water treatment for VOCs and other contaminants. Typical treatment would be for groundwater, storm water, wastewater treatment, or industrial sites with similar applications. These units are ASME stamped and certified for higher flow rates and include ABS Water Diffuser Internals.

APPLICATIONS:

- Remediation of contaminated water streams

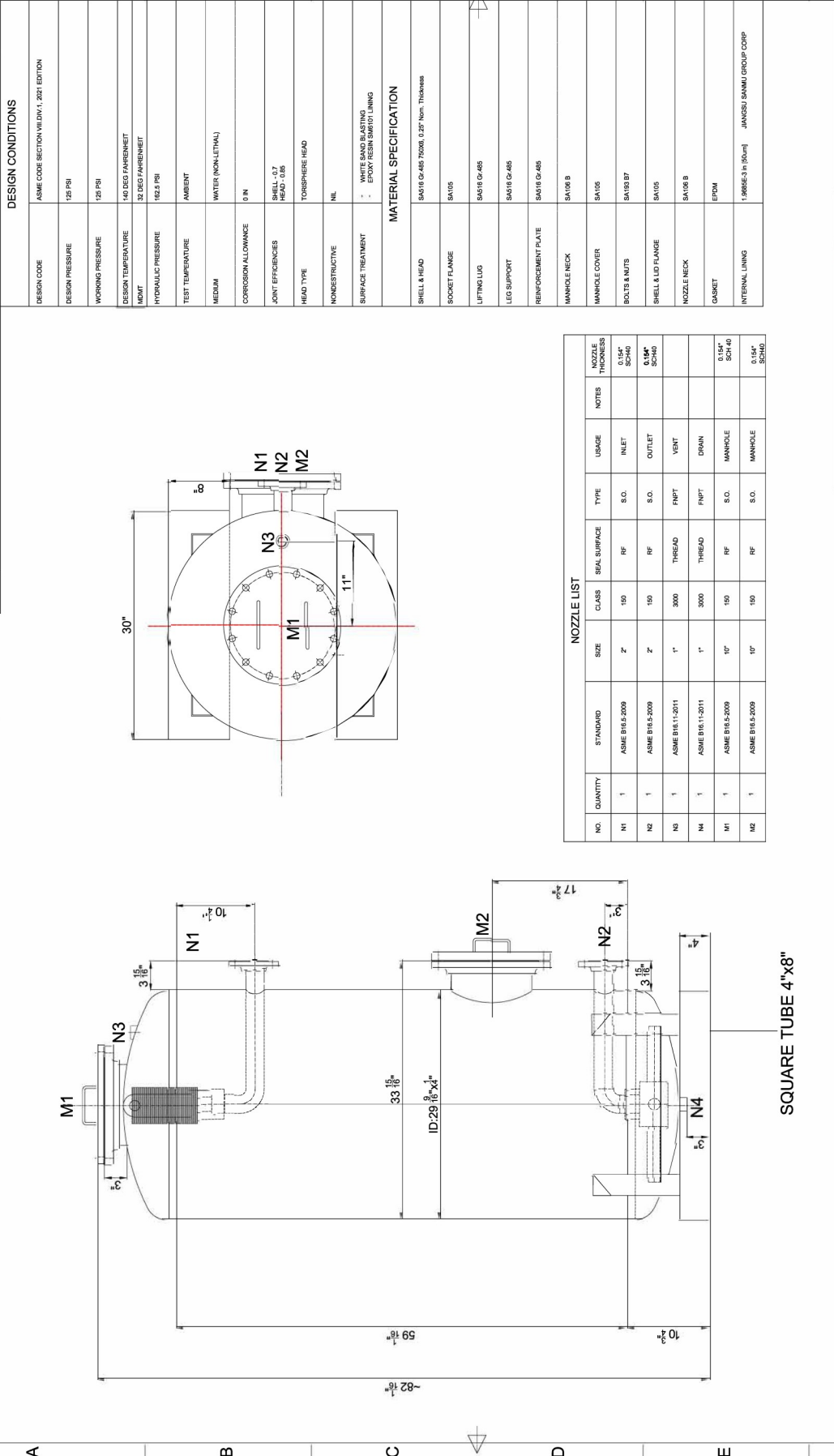
STANDARD SPECIFICATIONS:

- 30"D x 82"H Sandblasted 6MM Carbon Steel Vessel
- High Quality UV Resistant Epoxy Painted Exterior
- Epoxy Resin SM6101 Lining Interior
- 10 Inch 150# Flanged Manhole with Cover
- 2 Inch 150# Flanged Inlet/Outlet
- 1 Inch Drain Port
- Design Working Pressure: 125 psig
- EPDM Gasket
- 4" x 8" Square Tube Runners
- Carbon Steel Base with Fork Pockets
- Holds approximately 500 lbs. of GAC media



PRM PART # CARBONTKHP500ASMEX

888-TREAT-IT • www.prmfiltration.com • sales@prmfiltration.com



NOZZLE LIST

NO.	QUANTITY	STANDARD	SIZE	CLASS	SEAL SURFACE	TYPE	USAGE	NOTES	NOZZLE THICKNESS
N1	1	ASME B16.5-2008	2"	150	RF	S.O.	INLET		0.154" SCH50
N2	1	ASME B16.5-2008	2"	150	RF	S.O.	OUTLET		0.154" SCH50
N3	1	ASME B16.11-2011	1"	3000	THREAD	FNPT	VENT		
N4	1	ASME B16.11-2011	1"	3000	THREAD	FNPT	DRAIN		
M1	1	ASME B16.5-2008	10"	150	RF	S.O.	MANHOLE		0.154" SCH40
M2	1	ASME B16.5-2008	10"	150	RF	S.O.	MANHOLE		0.154" SCH50

PRM Filtration

ASSM.

PROJECT: FILTER HOUSING
 PHASE: DETAIL DESIGN
 DWG. No.: 700-2F

SCALE: 1:1
 AREA: 7
 DISCIPLINE: 8

WORK No.:
 PREPARED: []
 APPROVED: []

DUTIES: []
 SIGNATURE: []
 DATE: []

PAGE 1 OF 1

SQUARE TUBE 4"X8"