

Air Sparge/ SVE System



Absolute Quality is our Goal... Genuine Service is our Habit!

We've done all the hard work for you! PRM provides the highest quality Remediation systems in the industry, and this prepackaged AS/SVE System is functionally designed to perform for the life of your project.

Features:

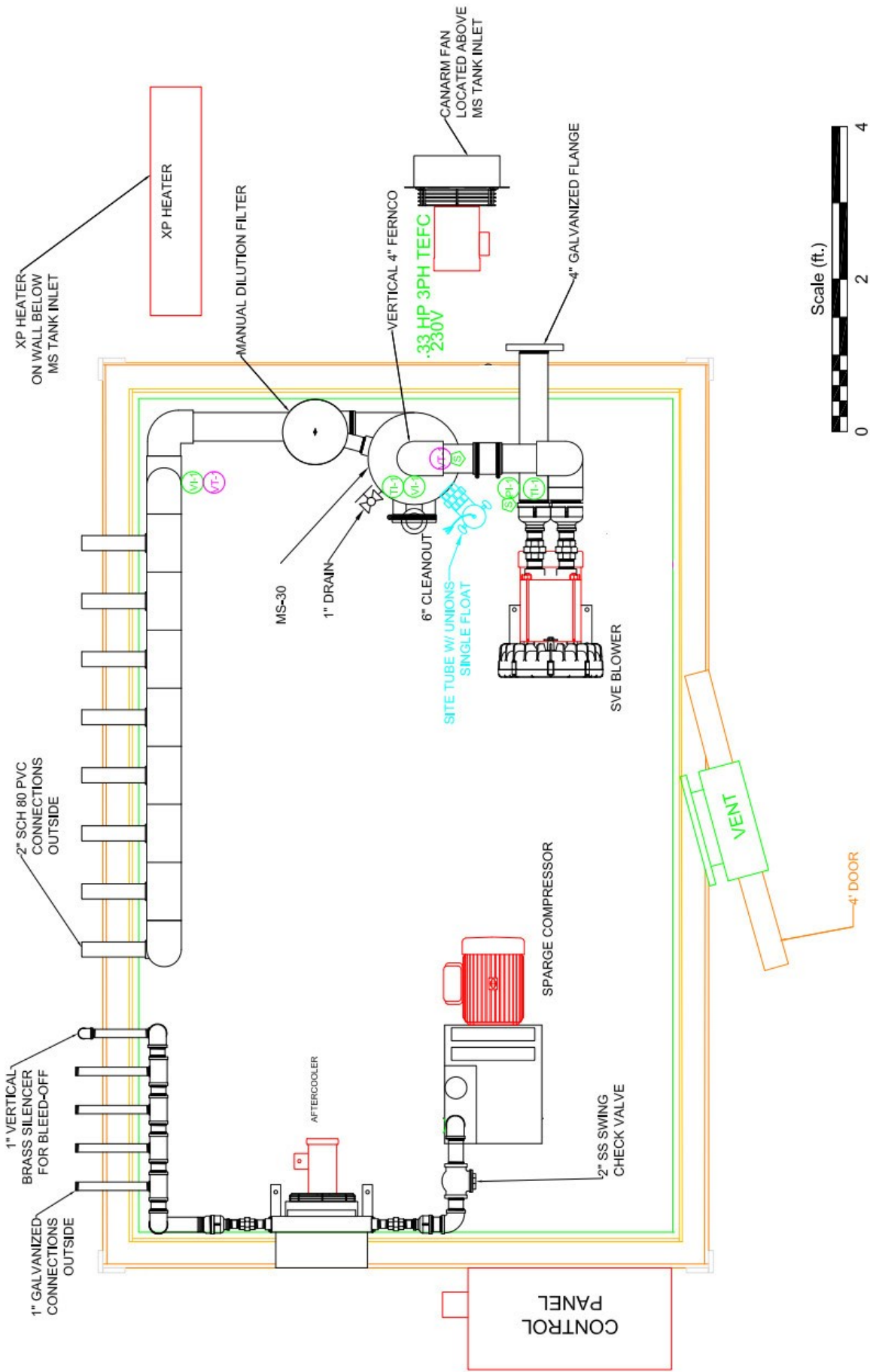
- 8' x 12' insulated building
- NEMA 4 Control Panel; UL 508A and 698A Certifications
- SVE System:
 - Gast 6 hp Regenerative Blower, 230V, 3 ph, XP motor (Flow ~180 cfm @ 55"WC vacuum)
 - Sch 80 PVC Inlet Manifold with 15 legs
- PRM MS-30 Moisture Separator, 15 gallon water capacity, Aluminum or Steel construction with clear site tube and float stem level controls
- Air Sparge System:
 - DTA-60 rotary vane compressor, 5 hp, 230V, 3 ph, TEFC motor, 25 cfm @ 15 psi. Steel Sparge Manifold with 4 legs. Discharge Heat Exchanger



Product Recovery Management, Incorporated
(888) TREAT-IT

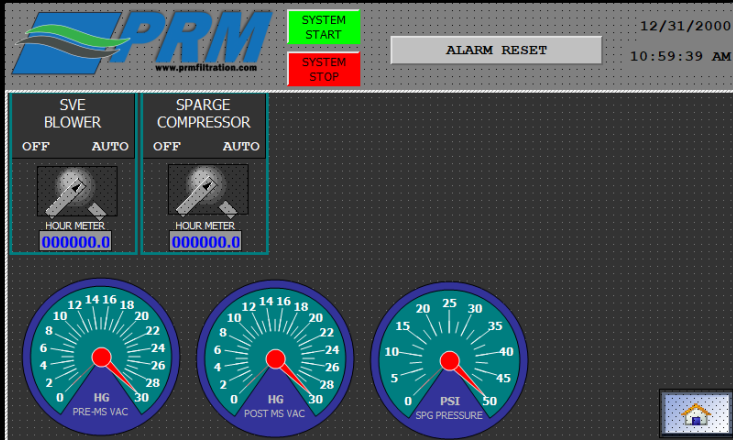
888-873-2848 • 919-957-8890 • www.prm-net.com • sales@prmfiltration.com
Butner, NC • Webster, NY • Lakeland, FL

8' x 12' BUILDING



SIEMENS

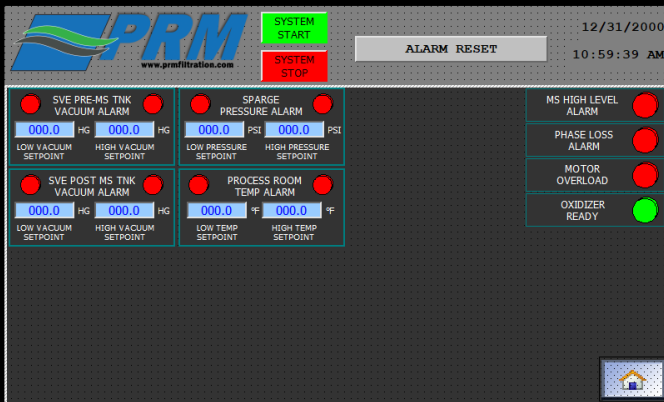
SIMATIC HMI



TOUCH

SIEMENS

SIMATIC HMI

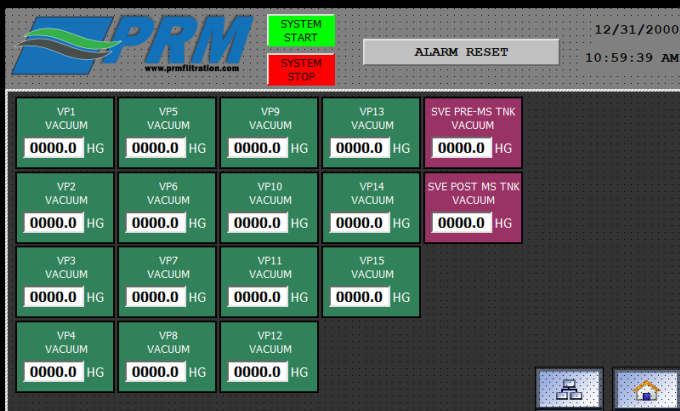


TOUCH

- Main System Control Panel
 - NEMA 4 3rd Party Listed Industrial Control Panel, mounted on building exterior with:
 - Siemens S7-1200 PLC with 7" HMI
 - All lights and switches are virtual on the PLC
 - Includes datalogging of all data
 - Option for telemetry adder to allow remote monitoring, data access, and alarm notification
 - Motor starter with thermal overload for both Air Sparge and SVE
 - Intrinsically safe relays provided
 - Cyber Power 825VA UPS and surge protector
 - Basic lightning protection
 - 3 phase power line monitor with feedback to PLC
 - Distribution block and Circuit Breakers for all system components.
 - Control panel mounted and pre-wired to all equipment

SIEMENS

SIMATIC HMI



TOUCH



- SVE System: GAST R6P355R-50 regenerative blower, 6 hp 230V, 3 ph, XP motor, Flow will be ~ 180 cfm@55"wc vacuum.
 - Vacuum transmitter on inlet for low vac alarm and operating vacuum datalogging
 - Inlet temp gauge and sample port
 - Discharge includes sample port, temp gauge, pressure gauge.
- Moisture Separator PRM MS-30, ~15 gallon water capacity. Unit consists of aluminum or carbon steel construction w/ manual drain.
 - Steel MS tank has a UV resistant powder coat on exterior and a triple interior layer of an epoxy powder coat that is specifically designed for corrosion resistance.
 - Internal 231P filter inside of MS tank
 - Centrifugal inlet design with bolt down lid and 6" cleanout.
 - 2" clear PVC sight tube w/ union connections
 - SS 1 float stem for H/L indication and alarm
 - Automatic vacuum relief valve provided
 - Vacuum transmitter for operating well vac as well as alarms
 - 2" manual dilution valve with silencer provided
 - 0-30 in-Hg liquid filled vacuum gauges prior to blower and MS tank
 - Sample ports located prior to MS and between MS and blower , MS has 1" manual drain valve

- Air Sparge System: Gardner Denver DTA-60 rotary vane compressor, 5 HP, 230V, 3 phase, TEFC motor, 25 cfm @ 15 psi
 - Integral inlet air filter
 - Pressure gauge and transmitter to report to PLC
 - Pressure relief/regulating valve
 - Check valve
 - Manual air bleed off valve
 - Discharge Heat exchanger, sized for 100 scfm
 - Discharge line after heat exchanger plumbed to the 4 leg manifold and has pressure gauge and temperature gauge
- Air Sparge Manifold: 2" x 1" Steel manifold with 4 legs
 - 1" brass or SS ball valve
 - Pressure transmitter
 - options for rotameters and pressure gauges



Product Recovery Management, Incorporated
(888) TREAT-IT

888-873-2848 • 919-957-8890 • www.prm-net.com • sales@prmfiltration.com
 Butner, NC • Webster, NY • Lakeland, FL



- System Enclosure
 - 8' x 12' Insulated Wood Frame Building with 4' door
 - Pressure treated skid runners and can sit on ground, stone, or concrete.
 - (2) Hazardous location LED light fixtures mounted on ceiling
 - Hazardous location exhaust fan with thermostat for process room.
 - Door and wall vents for proper airflow
 - 1800 W hazardous location thermostatically controlled heater.
 - Anchor points on each corner of the enclosure.
 - Acoustic insulation provided on interior walls and ceiling as well as dampers for the vents and fan/aftercooler discharges



Product Recovery Management, Incorporated
(888) TREAT-IT

[888-873-2848](tel:888-873-2848) • [919-957-8890](tel:919-957-8890) • www.prm-net.com • sales@prmfiltration.com
[Butner, NC](#) • [Webster, NY](#) • [Lakeland, FL](#)