

# DURAPOST URBAN COMPOSITE PANEL



## DESCRIPTION

New for 2022, DuraPost's Urban slatted composite panels provide a contemporary feel, while keeping a timeless, authentic timber finish that will enhance your garden. This cutting-edge panel has been developed with a focus on style, without compromising the strength and longevity of the fence. These maintenance-free composite slatted panels are a reliable and sustainable option, manufactured from a blend of rice husk that is a natural waste from rice crops and recycled HDPE. The rails are manufactured from galvanised steel, nano-coated then powder coated to produce a durable weather resistant product. The slatted panel system consists of 6 boards and 2 horizontal U-shaped rails.

**These boards may be fitted vertically or horizontally.**

MATERIALS	PERCENTAGE
Rice Husks	45-55%
Recycled HDPE	25-35%
Mould-Inhibitor	≤10-20%
UV-Stabilizing Ingredient	≤10-20%

## SUSTAINABILITY

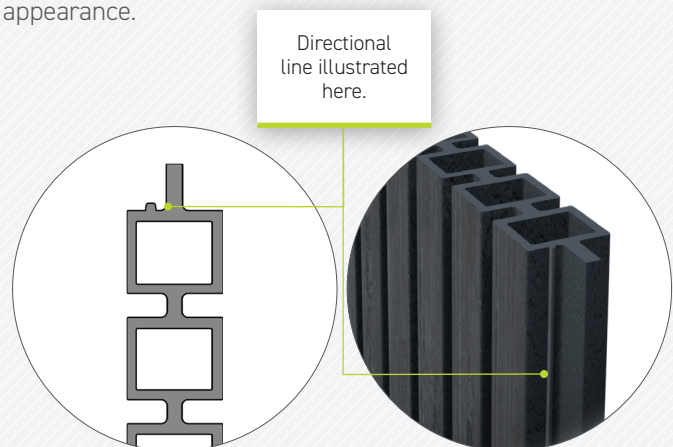
Sustainability is a large part of the design of this product, utilizing the natural by-product from rice crops, and recycled HDPE.

Rice husks are the hard protective coverings of rice grains which are separated from the grains during the milling process. Rice husk is an abundantly available by-product in all rice producing countries.

## DIRECTIONAL GRAIN

During the manufacturing process, DuraPost Urban boards have a raised wood grain effect added onto each face. The grain direction is opposite on each side of the board and can look inconsistent if laid in different directions.

A raised moulding line has been added onto the tongue-edge (top) of each board (as shown in the image below). When building your fence panel, make sure that each board has the line on the same side. This ensures that the raised wood grain effect has a uniform direction giving a consistent appearance.



## WHAT YOU NEED TO BUILD AN URBAN PANEL

Each bay: 1 x pack of rails, and 3 x packs of panels.

DESCRIPTION	PRODUCT CODE	WEIGHT
DURAPOST URBAN 6FT SLATTED COMPOSITE PANEL (PACK OF 2)   GREY	B835183A	25 kg
DURAPOST URBAN 6FT SLATTED COMPOSITE PANEL (PACK OF 2)   BROWN	B835183B	25 kg
DURAPOST 6FT SLATTED COMPOSITE PANEL (PACK OF 2)   NATURAL	B835183G	25 kg
DURAPOST RAILS FOR SLATTED COMPOSITE PANEL (PK2)   ANTHRACITE GREY	B835000A	5.45 kg
DURAPOST RAILS FOR SLATTED COMPOSITE PANEL (PK2)   SEPIA BROWN	B835000B	5.45 kg
DURAPOST RAILS FOR SLATTED COMPOSITE PANEL (PK2)   OLIVE GREY	B835000G	5.45 kg

## STORAGE

Store the packs of composite boards in a flat dry areas off the floor. They may be stacked on top of each other but they must be evenly supported underneath to prevent bending.

## DURABILITY TESTED

DuraPost has been durability tested to EN 1794-1-2018. Testing carried out a 1800mm x 1800mm bay, using 2.4m DuraPosts, set 600mm into the ground.



For more information on the DuraPost fence post, see 'DuraPost Specification Sheet.'

## DURAPOST POWDER COATING

**Powder coating is mainly used for the coating and protection of metals. Polyester powder coating is a type of coating that is applied as a free-flowing dry powder.**

Unlike conventional liquid paint which is delivered via an evaporating solvent, powder coating is typically applied electro-statically and then cured under heat or with ultraviolet light.

The powder is a thermoset polymer, which is used to create a hard finish that is tougher than conventional paint.

Polyester Powder Coatings offer durable decorative finishes in a wide range of colours, textures and gloss levels. They are formulated to provide maximum corrosion resistance, colour stability and gloss retention. They are suitable for interior and exterior use and entirely T.G.I.C free (triglycidyl isocyanurate crosslinkers).

All items are coated in accordance with BS-13438.

Our powders have certificated industry standard approval which are available on request.

# DuraPost®

BY BIRKDALE

## FINISHES

### RAILS

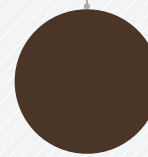
#### RAILS:

**Anthracite Grey**  
(RAL 7016)

**Sepia Brown**  
(RAL 8014)

**Olive Grey**  
(RAL 7002)

**Jet Black**  
(RAL 9005)



### BOARDS

#### PANELS:

**Grey**

**Brown**

**Natural**



### Pre-Treatment

To ensure the best adhesion for coatings, all products undergo an eight-stage extensive pre-treatment process.

As part of this process DuraPost use the premier brand for surface technology and process solutions that create competitive advantages across the industrial manufacturing marketplace.

Trusted for reliability, sustainability and proven results, our processes deliver superior operational efficiency.

DuraPost use the latest conversion coating technologies that perform well on all standard substrates of steel, zinc and aluminium. They significantly reduce the environmental impact, while their corrosion performance meets metal finishing specifications for powder coated metal substrates.

### Tested

All powder coatings are salt spray test to 1,000 hours to BS 3900F4, impact resistance to BS 3900E3, scratch resistance to BS 3900E2, and humidity minimum 1,000 hours to BS3900F2.

WE'RE ALWAYS OPEN AT  
[birkdalesales.com](http://birkdalesales.com)

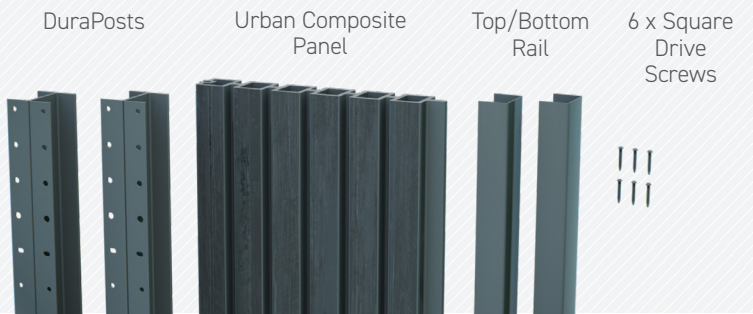
**Tel:** 0345 450 9000 **Fax:** 0345 450 9085  
**Email:** [mail@birkdalesales.com](mailto:mail@birkdalesales.com)

# DURAPOST URBAN COMPOSITE PANEL



## PARTS REQUIRED FOR 1 PANEL

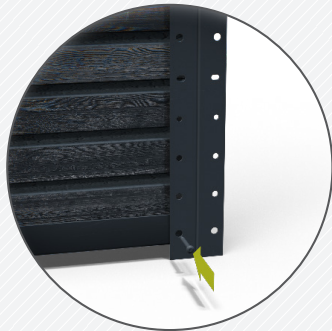
- 2 x DuraPost Fence Posts
- 1 x Set of Rails (Top/Bottom)
- 3 x Packs of Urban Slatted Panels
- 6 x Square Drive M4 x 30mm Screws (SQ2)



## 01 SET POSTS USING BOARD

1. Set the posts in the ground, using a horizontal Urban board to gauge the distance.

2. Fix the bottom rail and the first Urban board in place. The base of the bottom rail should be 1830mm from the top of the posts or the top of the top rail location.

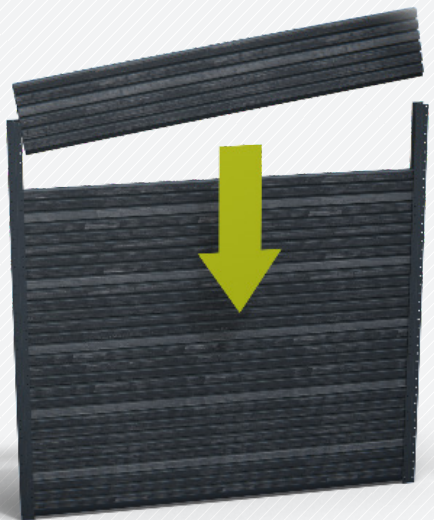


It is important to fix through the rail and the board simultaneously, otherwise the board will not be able to slot fully into the recess.

## 02 FIT COMPOSITE BOARDS

1. Place the boards so that the tongue and groove ends are connected tightly together.

2. Place the top rail in place and fix either end with the self-drilling screws provided.



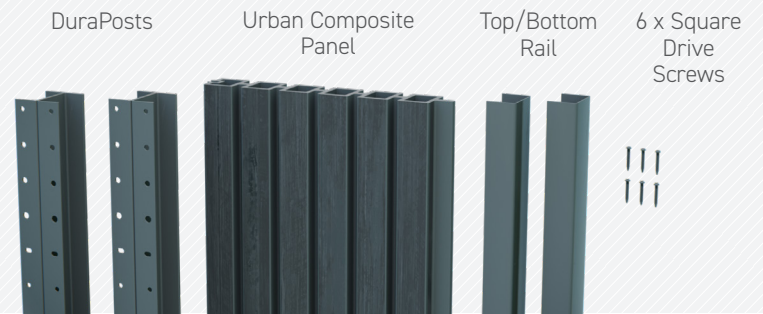


# DURAPOST URBAN COMPOSITE PANEL



## PARTS REQUIRED FOR 1 PANEL

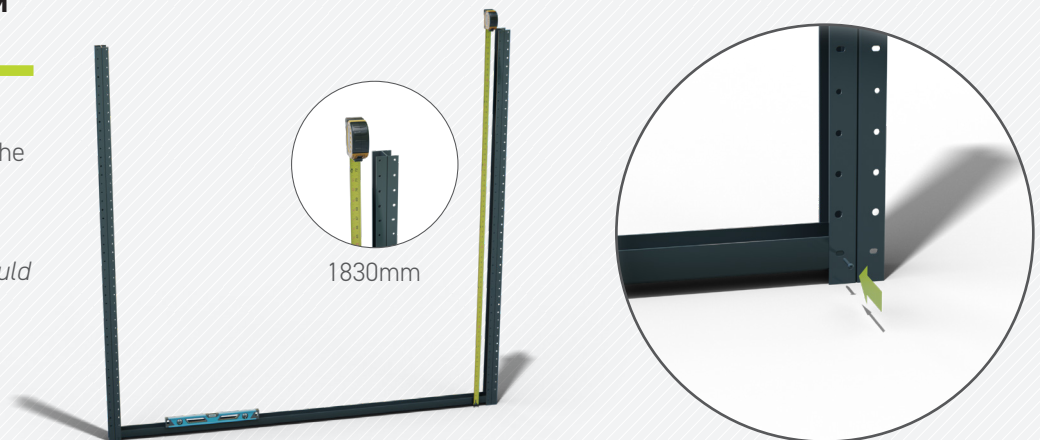
- 2 x DuraPost Fence Posts
- 1 x Set of Rails (Top/Bottom)
- 3 x Packs of Urban Slatted Panels
- 6 x Square Drive M4 x 30mm Screws (SQ2)



## 01 SET POSTS USING BOTTOM RAIL TO GAUGE

1. Set the posts in the ground, using the bottom rail to gauge the distance.

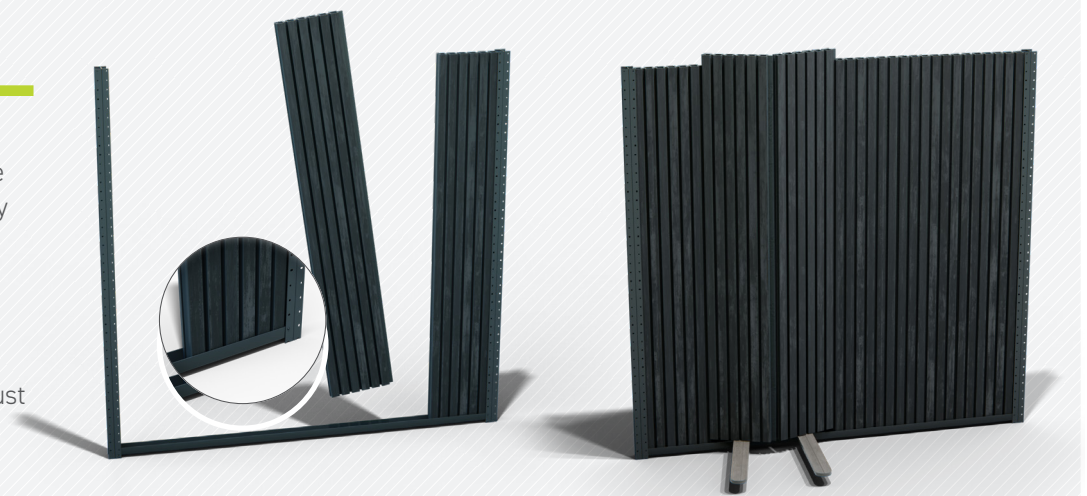
*The base of the bottom cross rail should measure 1805mm from the top of the top rail.*



## 02 FIT COMPOSITE BOARDS

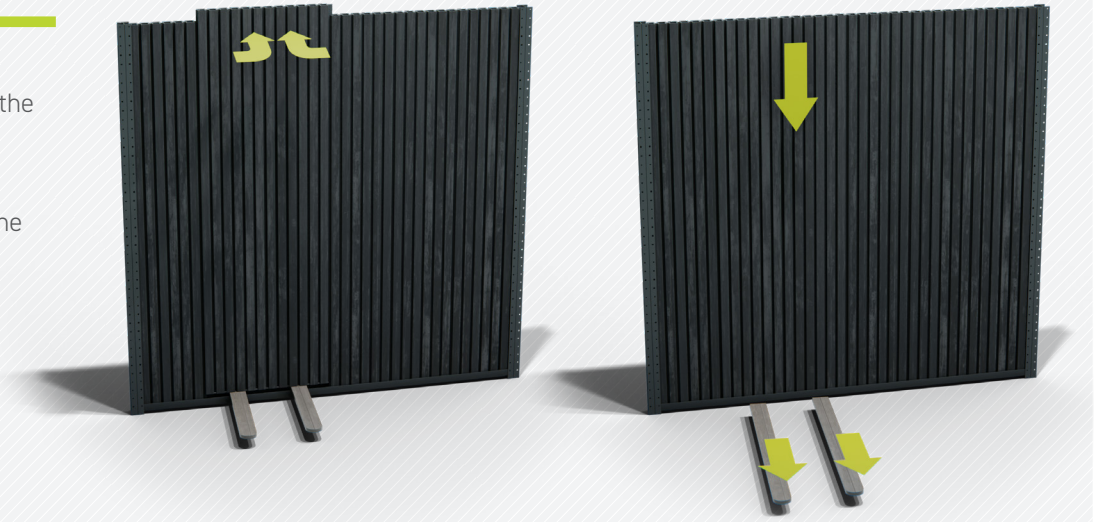
1. Place the boards so that the tongue and groove ends are connected tightly together.

2. Rest the last two boards above the rail, angled outwards so that the tongue and groove are lined up and just touching.



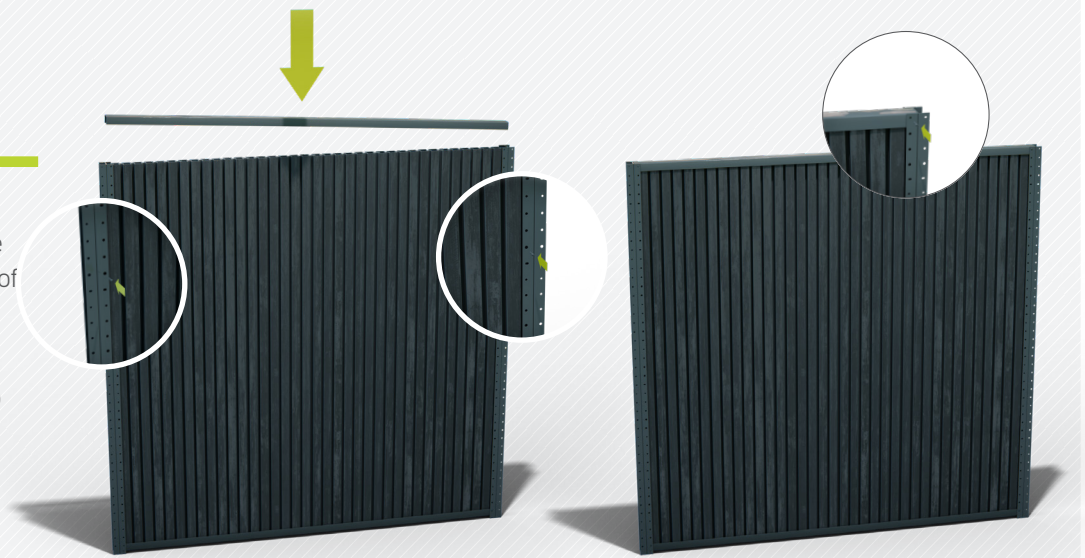
### 03 SECURE LAST TWO BOARDS

1. Push the boards inwards so that the tongue and groove clicks together.
2. Pull out the supports and allow the boards to slide into the bottom rail.



### 04 FIT TOP RAIL

1. With the composite boards in place the top rail can be fitted onto the top of them.
2. Fix through the DuraPosts and into the rail at either end.



### 05 (OPTIONAL) FIX SIDES WITH ADDITIONAL SCREWS

1. You may put additional fixings along the edge boards for further strength.

