

DURAPOST BOLT-DOWN



DESCRIPTION

Constructed from S275 grade hot rolled steel, the DuraPost Bolt-down post supports enable the fixing of DuraPosts to solid surfaces, suitable for fixing into masonry or concrete surfaces (not tarmac).

RECOMMENDED USES

Bolt-downs are commonly used in driveways at roughly 1200mm fence heights, or in compounds where the closer corners provide additional strength for taller posts. They may also be used on top of brick walls if the brickwork is strong enough and in good condition, or on raised deck/hard standing areas. For fences between 1200mm and 1800mm, use 8061508 for the additional strength.

8070001 should not be used for posts that will have a gate hung from them.

FINISH

The DuraPost Bolt-down has been hot dip galvanised to standard BS EN ISO 1461: 2009.



For more information on the DuraPost fence post, see 'DuraPost Specification Sheet.'

PRODUCTS

DESCRIPTION	PRODUCT CODE
DURAPOST BOLT DOWN 150MM GALV 5MM BASE (Supplied with 3 Hex Head Self-Drill fixings).	8061501
DURAPOST BOLT DOWN 150mm GALV 8MM BASE (Supplied with 3 Hex Head Self-Drill fixings).	8061508
DURAPOST CORNER POST BOLT DOWN 125MM GALV	8070001

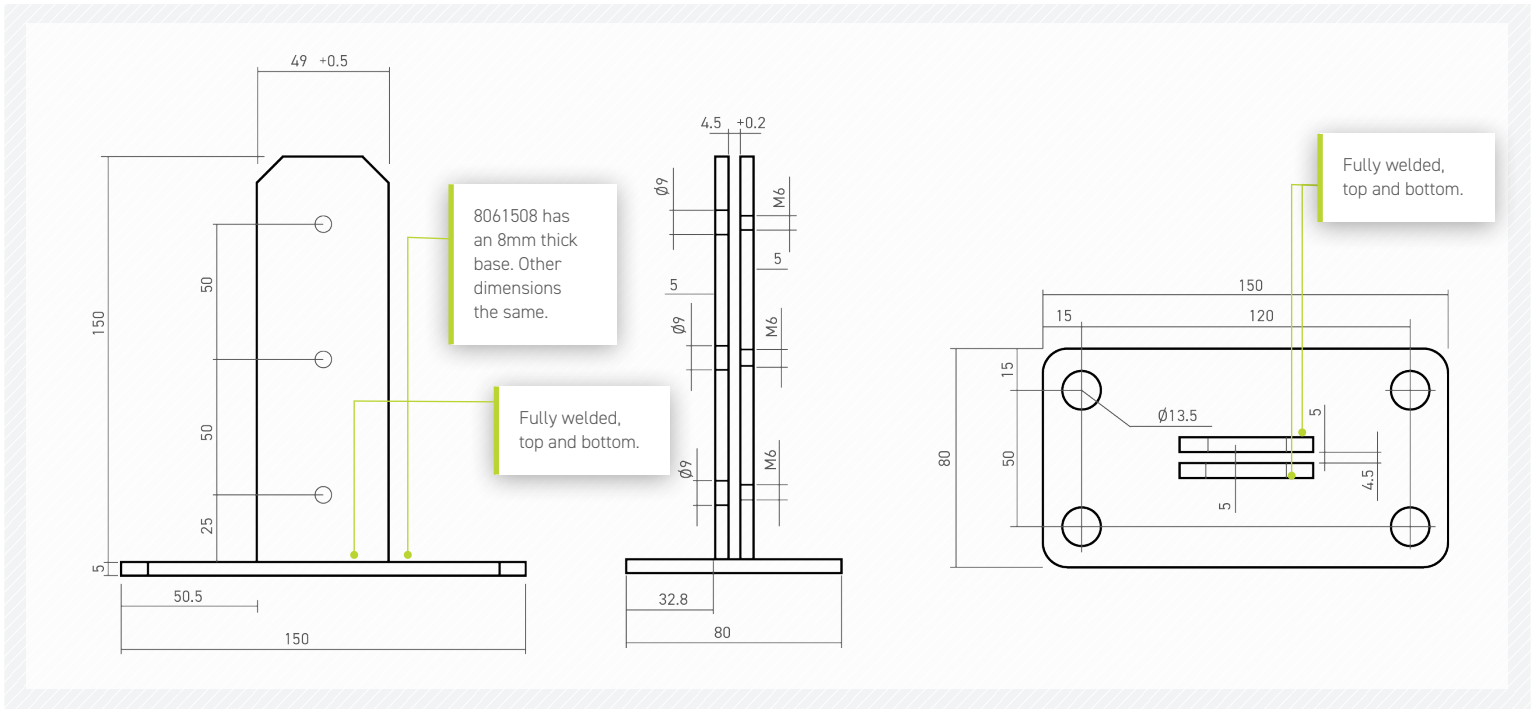
The standard DuraPost Bolt-down is welded top and bottom for greater strength and support. 8061508 is the same but with an 8mm base for further stability and strength. The Corner Post Bolt-down provides the same functionality as the previous two products, to be used with the DuraPost Corner-post.

Galvanised



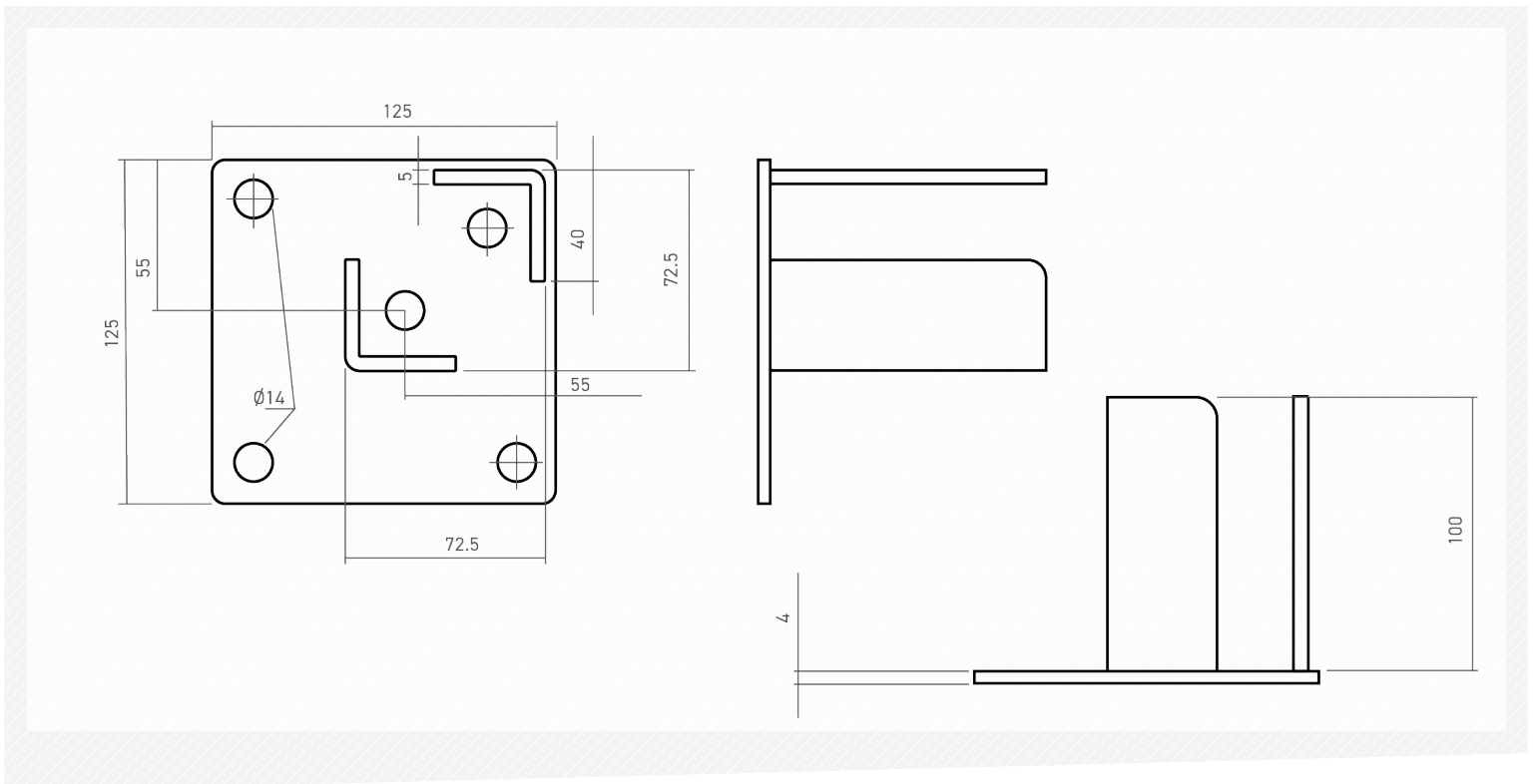
DIMENSIONS

8061501



DIMENSIONS

8070001



DURAPOST BOLT-DOWNS

PARTS REQUIRED

(For fitting 8061501 & 8061508)

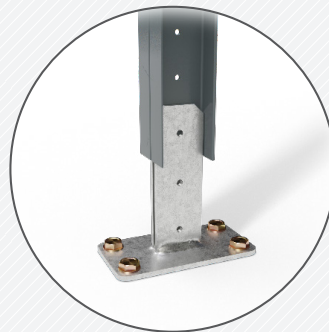
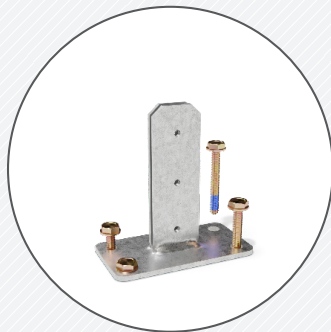
- 1 x Bolt-down
- 4 x 100mm M10 Masonry Bolts
- 3 x 25mm 5.5 SiteMate Hex Head Self-Drilling Screws (supplied with Bolt-Down)

8061501
Bolt-Down

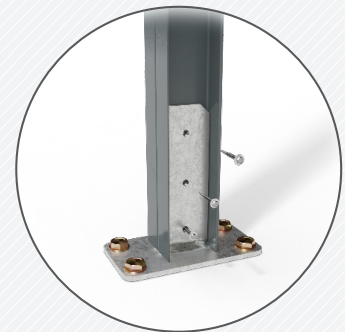
90101002
100mm M10
Masonry Bolts



1. Fix Bolt-down in desired location. Pre drill masonry with hammer drill.



2. Place DuraPost onto Bolt-down and fix through with hex head self-drilling screws.



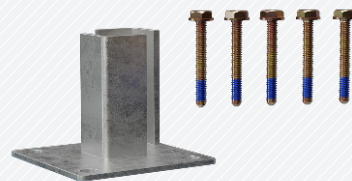
PARTS REQUIRED

(For fitting 8070001)

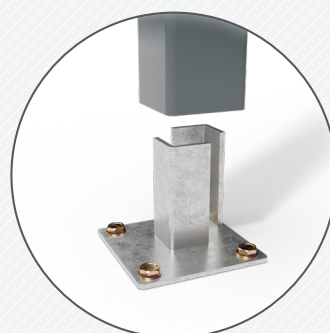
- 1 x Bolt-Down
- 5 x 100mm M10 Masonry Bolts
- 2 x 25mm 5.5 SiteMate Hex Head Self-Drilling Screws (Supplied wit Bolt-Down)

8061501
Bolt-Down

90101002
100mm M10
Masonry Bolts



1. Fix Bolt-Down in desired location. Pre drill masonry with hammer drill.



2. Place Corner-post onto Bolt-down and fix through with hex head self-drilling screws. 2 screws have adequate strength.

