



# MACHO Body Trimmer



## Safety instructions

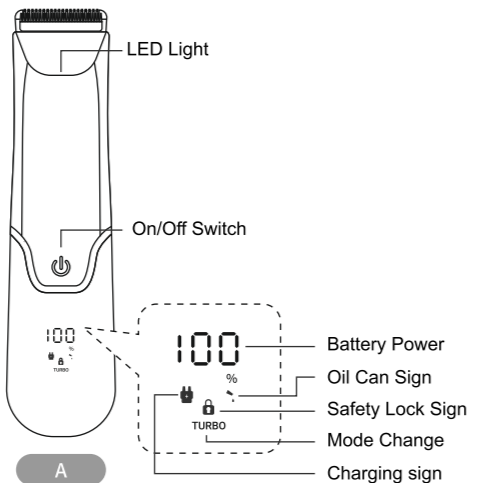
Please read all the instructions before using the trimmer and keep this manual in good care for future references.

### WARNING:

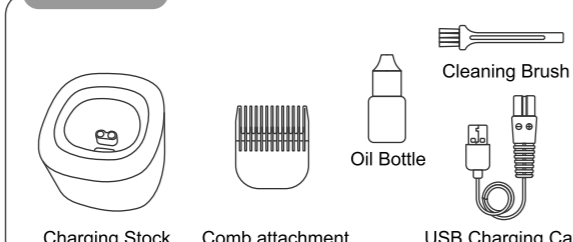
To reduce the risk of electrical shock, burns, fire or injury:

- Keep the power adapter away from water or wet surfaces and do not clean it with water.
- Do not submerge the trimmer in the water.
- Do not charge it with a power connection of over 220V, as it may lead to an electrical shock or a fire.
- Do not damage the charging cord. Do not cut, bend, stretch or twist it.
- Do not place weight or any pressure on the charging cord.
- Do not use the charging cord if it is damaged.
- Do not reach for the trimmer if it is connected to the charging cord and has fallen into the water. Unplug immediately.
- Unplug and remove the charging cord from the trimmer before cleaning it.
- Keep the trimmer, the charging cord and all the attachments away from heated surfaces.
- Always check the blades and the guard before using the trimmer. Do not use the trimmer if the blades or the guard are damaged as it may lead to an injury.
- Keep the charging cord dry at all times. Do not handle/use it with wet hands.
- Do not try to modify, disassemble or repair the trimmer by yourself.
- Do not attempt to open the trimmer to remove/replace the built-in rechargeable battery.
- After charging, please pull out the plug immediately. Long charging sessions will cause battery loss.
- Only use the charging cord and accessories that came with the trimmer.

## Trimming system checklist



### Accessories



## Before use

Before using the trimmer for the first time, charge it for 1-2 hours for optimal performance:

1. Connect the charging cord to the trimmer. Plug it into an electrical outlet. The trimmer can be charged with or without the charging dock.
2. Place the trimmer into the charging dock. The indicator light turns on when the trimmer is charging.

**Always check the trimmer and all the accessories properly before you use it. Do not use the product or any accessory if it is damaged, as this may cause injury. Always replace a damaged part with a new and original part.**

1. Use the trimmer for its intended household purposes only and as described in this manual.
2. For hygienic reasons, the trimmer should only be used by one person.
3. Trimming is easier when the skin and hair are dry.

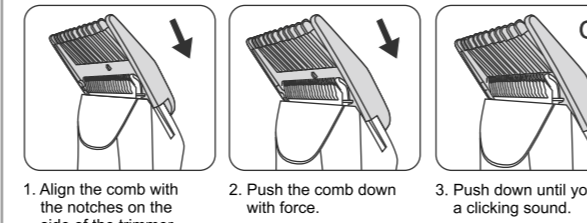
### Note:

This product is waterproof. It is suitable for use in the bath or shower and for cleaning under the tap. For safety reasons, the trimmer should only be used without a cord.

## How to Use:

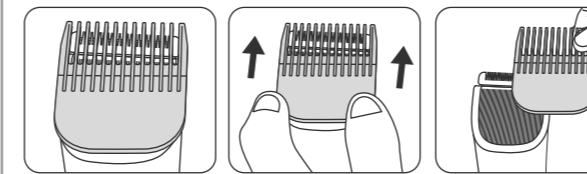
1. Select the comb attachment that best fits your personal grooming needs.
2. Align the comb side rails with the slots of the trimmer head. Secure comb by sliding downward, away from blade head. (NOTE: a clicking sound means the comb attachment is secure and ready for use).
3. The trimmer has two speed modes. Press the switch once for normal speed, press again to switch to high speed.
4. Long press the switch for three seconds to turn On/Off the LED light.

## Attaching the Comb:



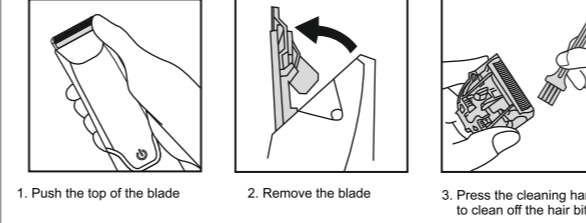
1. Align the comb with the notches on the side of the trimmer.
2. Push the comb down with force.
3. Push down until you hear a clicking sound.

## Removing the Comb:

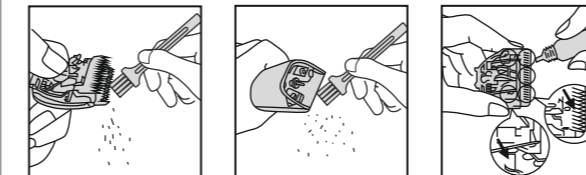


1. Grasp the ends of the comb with your hands.
2. Pull the comb out in the direction of the arrow.
3. Removal is complete.

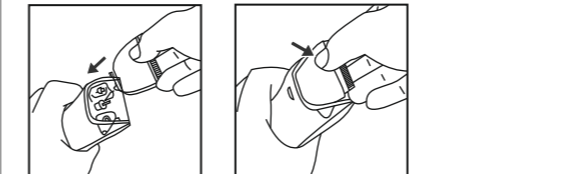
## Attaching the Comb:



1. Push the top of the blade
2. Remove the blade
3. Press the cleaning handle to clean off the hair bits



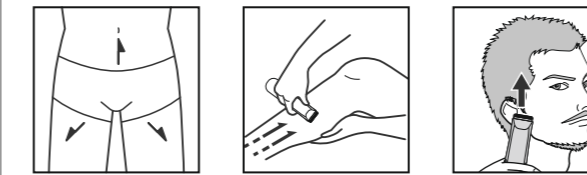
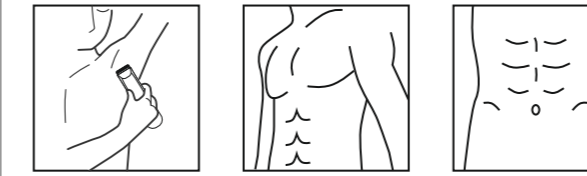
4. Press the cleaning handle to clean off the hair bits
5. Clean off the hair bits from the trimmer.
6. Put one drop in each arrow head



7. Match the bottom of the blade with the trimmer
8. Place the top of the blade into the trimmer

## Trimming:

Body parts you can trim:



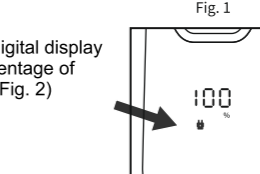
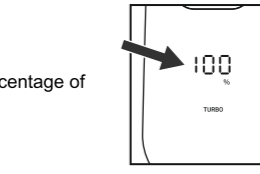
### Trimming Tips:

- Do not use the trimmer head on sensitive areas without the guard attachment.
- If you are trimming for the first time, be careful. Do not move the product too fast. Make smooth and gentle movements.
- Since all hairs do not grow in the same direction, you may want to try different trimming directions (i.e. upwards, downwards, or across). Practice is best for optimum results.
- Always make smooth and gentle movements and make sure the surface of the guard always stays in contact with your skin.
- For body trimming, make sure hair is clean and dry as wet hair tends to stick to the body and when trimming sensitive areas, always use the trimming comb attachment.
- Trim against the direction of your hair growth for optimal performance.
- Turn off and clean the trimmer after each use.

## Charging Instructions - A Type:

### Battery Status Indications:

The digital display will show the percentage of the battery remaining. (Fig. 1)



When the trimmer is charging, the digital display will always be on, showing the percentage of battery in blue and the plug in red. (Fig. 2)

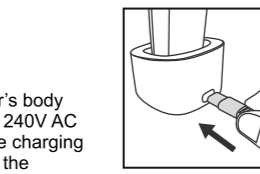
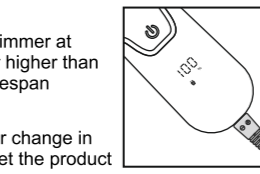
### Charging:

Charging, recharging or using the trimmer at temperatures below 40°F (4.5°C) or higher than 95°F (35°C) adversely affects the lifespan of the battery.

If the trimmer is subjected to a major change in temperature, pressure or humidity, let the product acclimatize for 30 minutes before use.

Make sure the trimmer is turned off.

Insert the USB cord into the trimmer's body and put the power plug in any 110V 240V AC outlet or insert the USB cord into the charging dock and put the trimmer's body on the charging dock.(Fig. 4)



## Cleaning, Care & Maintenance:

### NOTE:

Always clean the trimmer and the attachments regularly to ensure maximum performance and a proper operating duration.

### CLEANING ATTACHMENTS WITH WATER

1. Remove the attachments.
2. Rinse ONLY the attachment under warm running water. DO NOT use hot water as this might cause damage.

### CLEANING ATTACHMENTS WITH BRUSH

1. After removing the attachments first, thoroughly brush and blow out hair clippings from the blades, attachments, and top of the power handle.

## Specification

Charging Adaptor	5V 1000mA
	110V/240V 50/60Hz
	Power 5W
Charging Method	USB charging
Charging Time	About 1.5 hours
Use Time	About 60 minutes

### Warranty Support, Scan the QR Code



## Troubleshooting:

Q: WHAT IF THE BLADES DON'T MOVE WHEN TURNED ON?

A: The blades may be dirty or clogged. Clean and lubricate the trimmer as described previously.

Q: WHAT IF THE TRIMMER DOESN' T WORK AT ALL WHEN TURNED ON?

A: The trimmer might simply need charging. Follow instructions for charging as described previously. Should charging prove unsuccessful, contact OUR customer service via email support@igear.asia for assistance.

Q: WHAT IF THE TRIMMER FAILS TO HOLD A CHARGE?

A: Fully discharge the trimmer by using it until it completely stops working. Next, follow recharging instructions described previously. If time between the recharging cycles fails to increase, the battery might require replacement. Contact our customer service for assistance.

## Warranty

Warranty period: 1 Year  
In case of consumer complaints:  
Customer Care - +91 9372667193  
Email: support@igear.asia  
(Between 10am to 5pm, Mon-Fri)  
www.igearworld.com

Warranty Support, Scan the QR Code

