

Design With Confidence



ABOUT ALUMIRO

Alumiro is a Canadian company manufacturing high-quality aluminum windows and doors in Toronto, Canada. We build these products for residential, commercial, and industrial applications across North America. Our owners have over thirty years experience in the window, door and construction businesses and we work closely with every client on their designs, confident that we can bring their creative projects to life with our innovative and excellent craftsmanship.

MANUFACTURED IN CANADA

- Our products are manufactured in Ontario, Canada
- We meet or exceed all North American building standards
- We can provide service within 48 hours on all products and accessories
- Our top-of-the-line hardware is from ROTO North America and comes with a 10-year warranty.

All Alumiro's Windows and Doors Come with Powder Coated Aluminum Frames with a Thermal Break, 6mm Tempered Glass, Argon Gas and Low-E Coating

OUR VISION

Alumiro will use only the highest quality materials and state of the art manufacturing processes to ensure that our products are durable, efficient and sustainable. We work with local, national and international partners to build the most modern and innovative window and door systems.

OUR MISSION

To work closely with each client from conception and development through to the production, assembly and installation stages to provide total support making sure they achieve their objectives.

About Alumiro	Page 2
Curtain Wall Systems	Pages 3 - 6
Window Wall Systems	Pages 7 - 9
Large Fixed Windows	Page 10
Motorized Control Systems	Page 11
NEW 'Slim Slide' Profiles	Page 12
Certifications	Page 13
Glass Railing System	Pages 14 - 15

Let's do something special together!



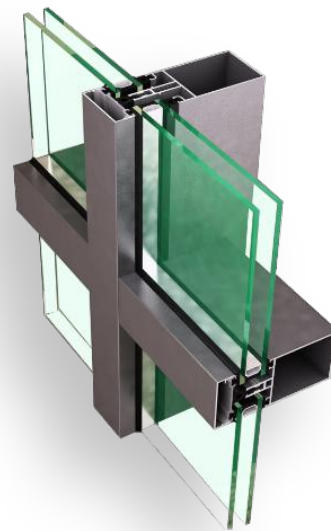
CURTAIN WALL FC 50 CURTAIN WALL SYSTEM

Alumiro Mfg.

FRAMELESS



FRAMED



Unlimited creative freedom and maximum light

Alumiro's FC 50 is a façade system that offers unlimited design freedom and allows maximum light to enter the space. FC 50 offers a solution towards the use of big, heavy and thick glass panes. FC 50 can support up to 700 kg (1543.24 lbs) in various glass support configurations. Even more glass weight can be offered in tailored solutions.

The system is available in several design and glazing variants, like steel beam look, standard pressure plates, structurally glazed and structurally clamped solutions. Specified levels of fire-resistance, burglar proof classes and thermal insulation, down to $U_f = 0.56W/m^2K$, are provided by different technical variants.

In addition to that, dedicated opening types can also be seamlessly integrated; a parallel opening window, a top hung window, a hidden vent tilt and turn window.

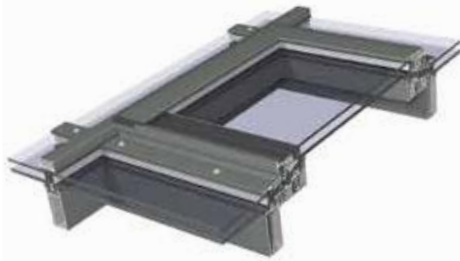
The FC 50 stands for an extensive range of profiles, gaskets, accessories and tools. It was developed for easy fabrication and installation. The extensive range of FC 50 profiles meets all requirements of contemporary architecture. For thermal performance, the system offers the use of triple glazing and makes the system even applicable for passive houses or low energy buildings.

Description of Opening Types:



1. Top Hung Window - THW:

The Top Hung Window allows for the integration of large opening spans which can be operated manually or automatically. The design choice between the solution with glazing bead or structural silicone glazing (SSG) characterises the appearance of the façade. This THW can be integrated in the overall strategy of the building's Smoke and Heat Exhaust Ventilation Systems (SHEVS).



2. Parallel Opening Window - POW:

A parallel Opening Window provides ultimate airflow for small or tall windows. This results in natural ventilation, improving the indoor air quality, thermal comfort and healthy indoor climate for building users. Aesthetically, this parallel way of opening gives a uniform impression: the reflection of the building remains the same for opened or closed vents. An additional advantage of the opening types is that it improves ventilation without creating unwanted access to the building (e.g., night ventilation). The POW can be used for big openings, operated both manually or automatically and is suited to be integrated in Smoke & Heat Exhaust Ventilation Systems. The glazing of the window can be done with glazing beads or with structural sealed glazing (SSG).

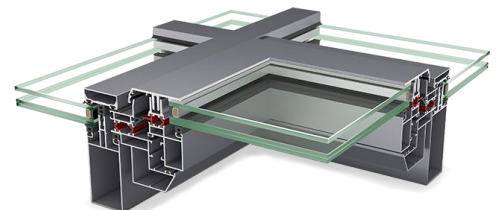


3. Hidden Vent - Tilt & Turn Window - HV-T&T:

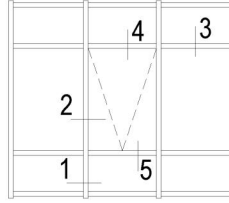
A special type of Inward Opening Window also known as the Hidden Vent is a structurally sealed glazing solution which can be applied in a standard Curtain Wall façade or in a structurally clamped façade. The main advantage is that the exterior does not differ from a fixed glazing panel in the façade, thereby not affecting the façade geometry. From the inside, this system uses a half mullion, resulting in minimal visible with. Water tightness is assured using a central gasket.

4. Attic Window - AW

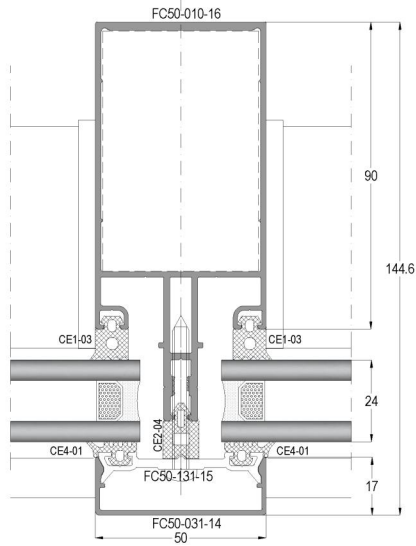
The Attic Window meets today's standards to provide a perfect water-tight and high insulating solution for glass roofs. Different glazing options are available for glazing: wither a cost efficient glazing bead version for standard glass, or a more aesthetic version with stepped glass. Both glass variants can be combined to create a zero water threshold on the bottom side to allow inclinations down to 5°. The superior High Insulation variant assures an increased insulation by using additional gaskets and smart insulation strips including low-e foil. A motorized version is especially convenient in roof windows in hard -to-reach places.



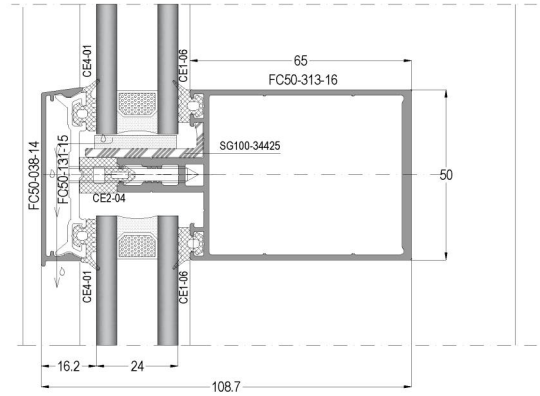
FC50-AS1 24mm Cam / 24mm Glass



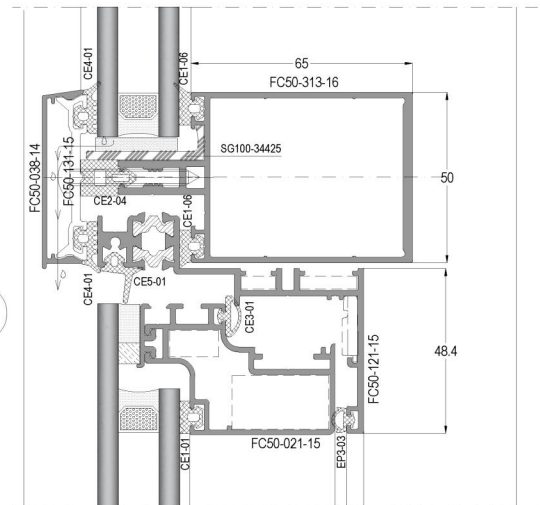
1



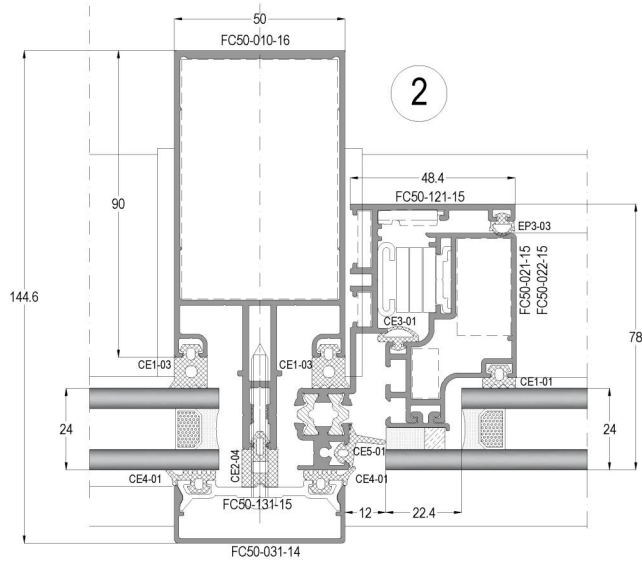
3



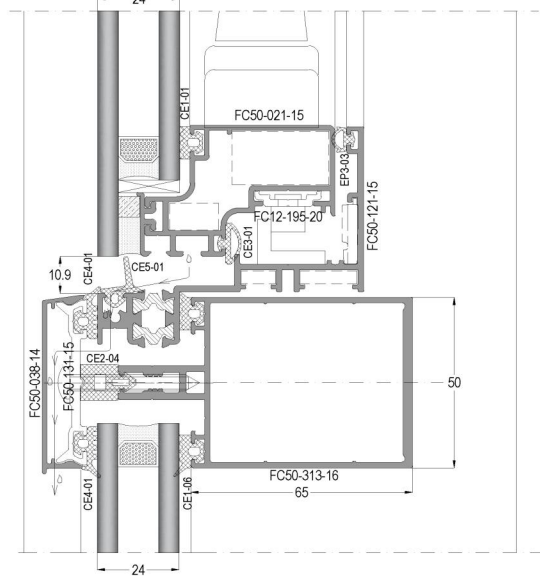
4



2



5





WINDOW WALL

Alumio Mfg.

Window Walls from Alumiro can be made up of sections with an aluminum frame surrounding them or one piece of glass which could cover one wall entirely. The wall on this project designed by Arcadis IBI Group, used a Window Wall instead of a Curtain Wall satisfying the architects requirements plus reducing costs by 30%.

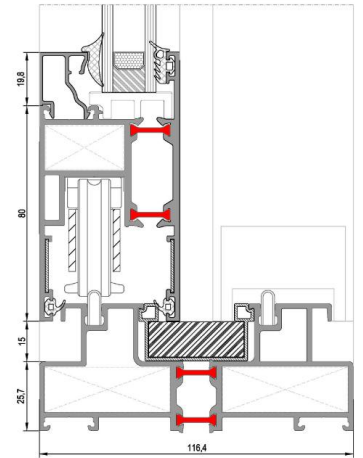
These walls could also use internal grilles to suggest 'squares' of glass panels, they can be made up of fixed windows, opening windows (tilt & turn, casement, push out), or various door configurations



Alumi^o Sliding Door System



Alumi^o's **Insulated Lift & Slide Door System** is an insulated sliding system. Its chasing depth is minimum 116mm, sash depth is minimum 52mm, and its Wall thickness is 1,8/2mm. There are lift and slide and simple slide options. There are reinforced profile options which allows you to use with casing, single, double and triple rail and high sash construction. This system is wind and waterproof and hermetically sealed.

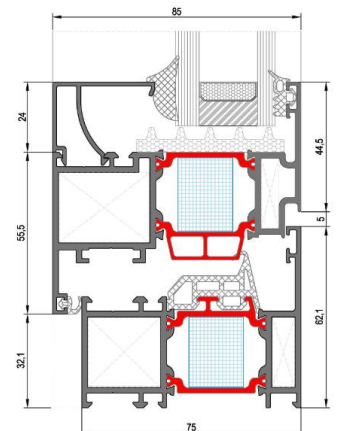


Alumi^o Window System



Alumi^o's window system is an insulated system available in various styles. It is a heat insulated aluminum window system with high heat and static performance.

It has a 75 mm case depth, 85 mm wing depth; 2 mm and 1.4 mm wall thickness profile options are available. It has a 34 mm heat barrier.





Alumi^o's **Casement Windows** offer top to bottom unobstructed views, structural integrity and wide-open ventilation. They are hinged on the side so the sash swings outward, either left or right depending on your needs.

Our **Awning Windows** have a sash that swings out and upwards and are hinged at the top. Our Awning windows open to 45 degrees from the bottom letting air circulate freely while providing a protective shield to keep rain out.



Tilt and Turn Windows are the most versatile when it comes to ventilation and fresh air. They offer two opening positions: one where you can tilt your window inside, or just rotate it so that there is an exposed panel for easy cleaning access.



Our **Push Out Casement Windows** provide old-world style with simple operation – just pull the lock handle up and push the window out. Stainless steel hinges allow this window to open to 60°.



LARGE FIXED WINDOWS - BIGGER IS BETTER



Large windows can be a clear one piece of thermal glass with sizes of 7.32 m wide (24 ft) by 2.44 m high (8.0 ft) and custom sizes up to 9.5 m wide (31.17 feet) and up to 3.0 m high (9.84 feet) achievable.

We are constantly researching and adopting the latest technologies, materials and design trends with the aim to introduce leading-edge products that offer enhanced functionality, improved design, efficiency and superior aesthetics.

We work closely with each client from conception and development stages through to production, assembly and installation stages to provide total support.



MOTORIZED CONTROL SYSTEMS

Motorizing/automation as an option can further enhance accessibility and comfort. Alumi can integrate a customized wireless system application into our motorized openers. They could be part of a security system, a timed operational system to open in the morning and close in the evening or detecting weather and programed to close in rain or high winds, etc.

Electric motorized openers are worth the cost for anyone looking for ease of use or for improving energy efficiency, safety, and security at home. Alumi can integrate a customized wireless system application into our motorized openers to make everything work the way you need and this can be integrated with home devices such as Google Nest, Alexa, Siri, etc.



Ease of Use

- Electric motorized openers make it easier to open and close out of reach windows where manual winding gear may require a ladder or a long bar.
- They can make our ten or twelve foot high patio sliding doors operate effortlessly.
- Alumi uses either electric or pneumatic chain, gear or belt driven systems depending on the job. Chained actuators work better for vertical windows as they operate on a chain instead of a rod. Folding arm actuators are best on side-hinged windows, making hard-to-reach windows a breeze.

Automation Capabilities

- The smart home could use geolocation to shut and lock the windows from anywhere when someone is not at home. You could set them to open at a certain time to optimize airflow and keep the house cool or open the windows on your summer home to air it out before you arrive.

Energy Efficiency

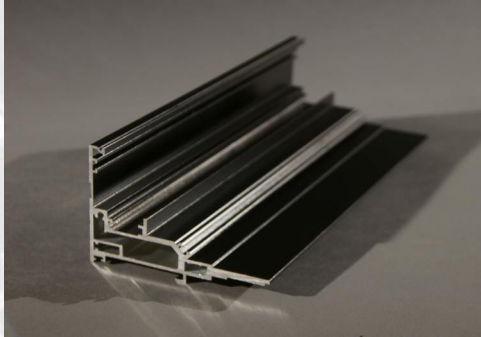
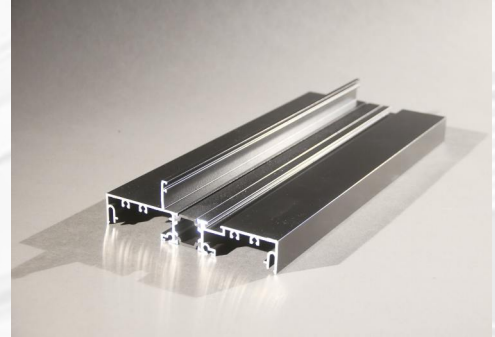
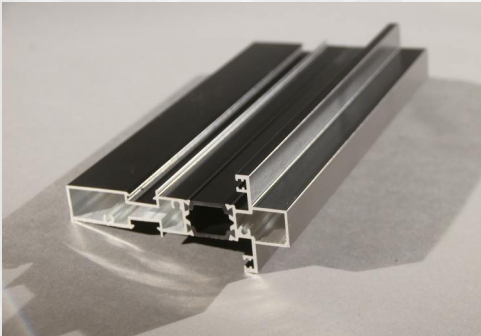
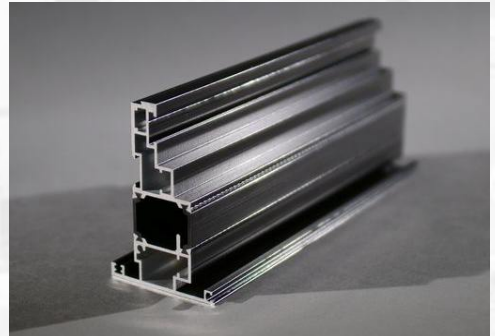
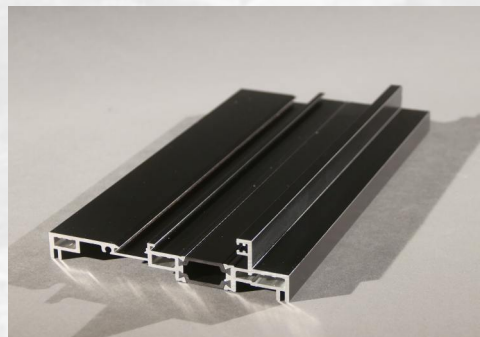
- Electric motorized openers are a fantastic way to save money on energy. You can use smart home technology to open and close any combination of windows at once if the house is getting too cold or too warm. These can even link up to a smart thermostat or temperature sensors around the home.

Safety and Security

- Motorized openers provide an extra level of safety and security. You can close and lock all windows at once in case you are worried about intruders.

NEW SLIM SLIDE PROFILES

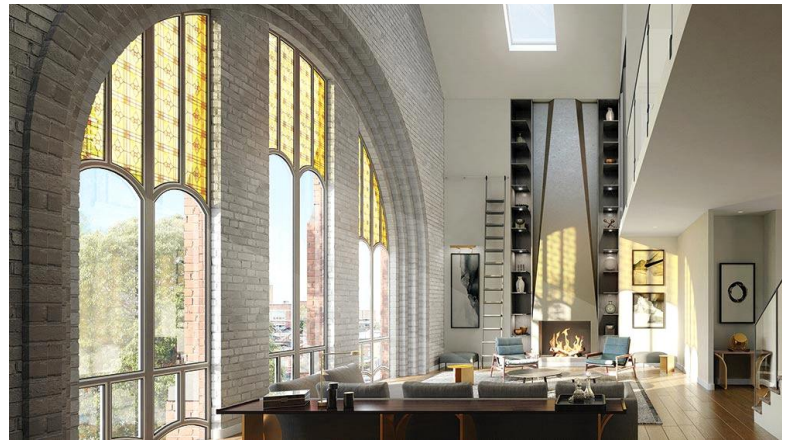
Alumiro has created a series of new 'Slim Slide' profiles that greatly reduce the size of the frame allowing a more modern slim look as well as allowing more light into the space.

**CASEMENT / AWNING ADAPTOR****WINDOW WALL FRAME****MULLION / TRANSOM****AWNING / CASEMENT SASH****FIXED / CASEMENT / AWNING FRAME**



HERITAGE & MODERN MEET

Alumi is Manufacturing and installing all the windows and doors for this Heritage project.



ALUMIRO'S CERTIFICATIONS

An EPDM rubber strip in our aluminum window and door profiles designed for North American weather conditions creates a thermal break making them highly thermally efficient. They are tested for wind, air, water and structural performance and certified by NFRC (National Fenestration Rating Council) and AAMA (American Architectural Manufacturers Association).

TESTED IN ACCORDANCE WITH:

CW / AW / AAMA / WDMA / CSA 101 / I.S.2 / A440-11 / A440s1-17

CW/AW TESTED:

Casement / Awning Windows
Fixed Windows
Swing Door
Sliding Door

NFSA Tested

Energy Star Certified:

Casement / Awning Windows
Fixed Windows
Swing Door
Sliding Door (XX)



GLASS RAILING SYSTEM

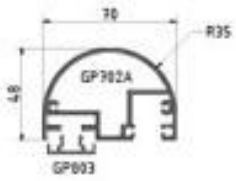
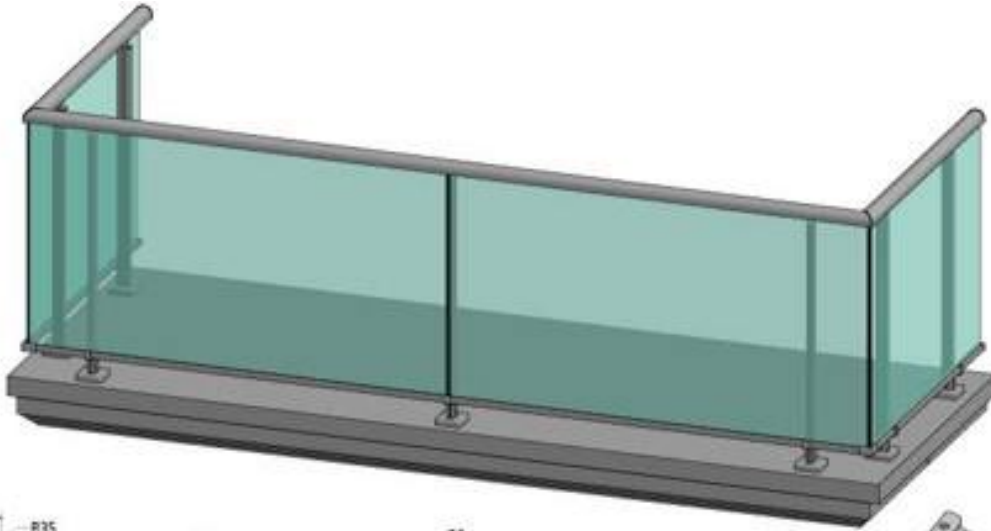
Alumi'o Mfg.

In general, glass railing systems are used in places where security is required and provide both security and a decorative look.

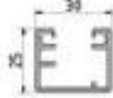
Alumi'o's glass railing system is your solution for unobstructed views! The simple, sleek modern design allows you to make a statement without taking away from the beauty outside. Combining high-quality stainless-steel components with tempered glass panels, this stylish and on-trend glass railing provides long-lasting safety and durability. Enjoy your outdoor view to its full potential!



Outdoor space should reflect your style and your personality, Alumi'o makes sure we fulfill all your requirements offering several choices of bottom railing mounts



GC11FL



GP311A



GP524



GP527



GS702



GS901A



GS318B1



GY318



GP526A



GP702L



GP702R



GT311



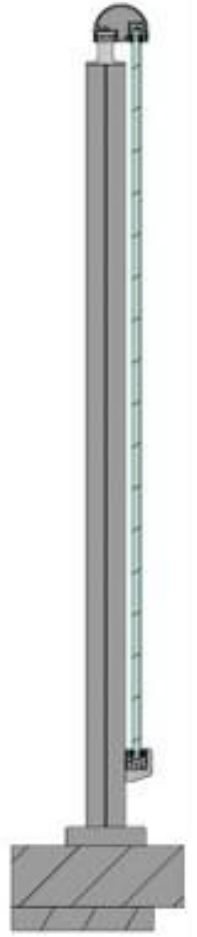
GV318



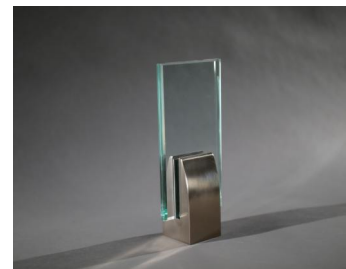
GV311A



GP526



Choice of Bottom Railing Mounts



Serving all of North America



Alumio Mfg.
150 Pony Drive, Newmarket, ON L3Y 7B6
www.alumiro.com P: 905.298.9321