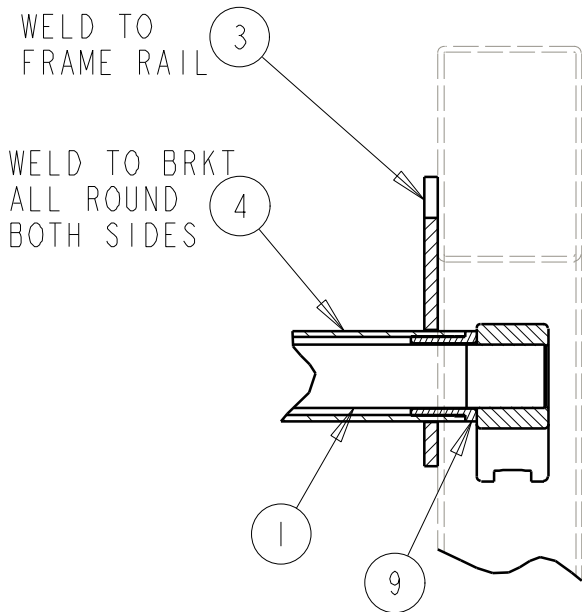
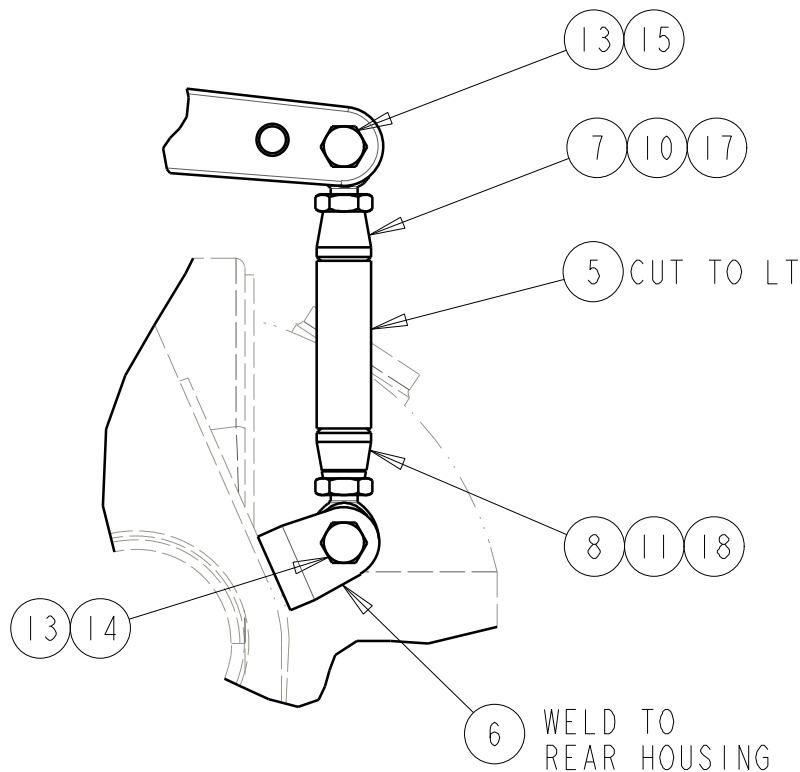
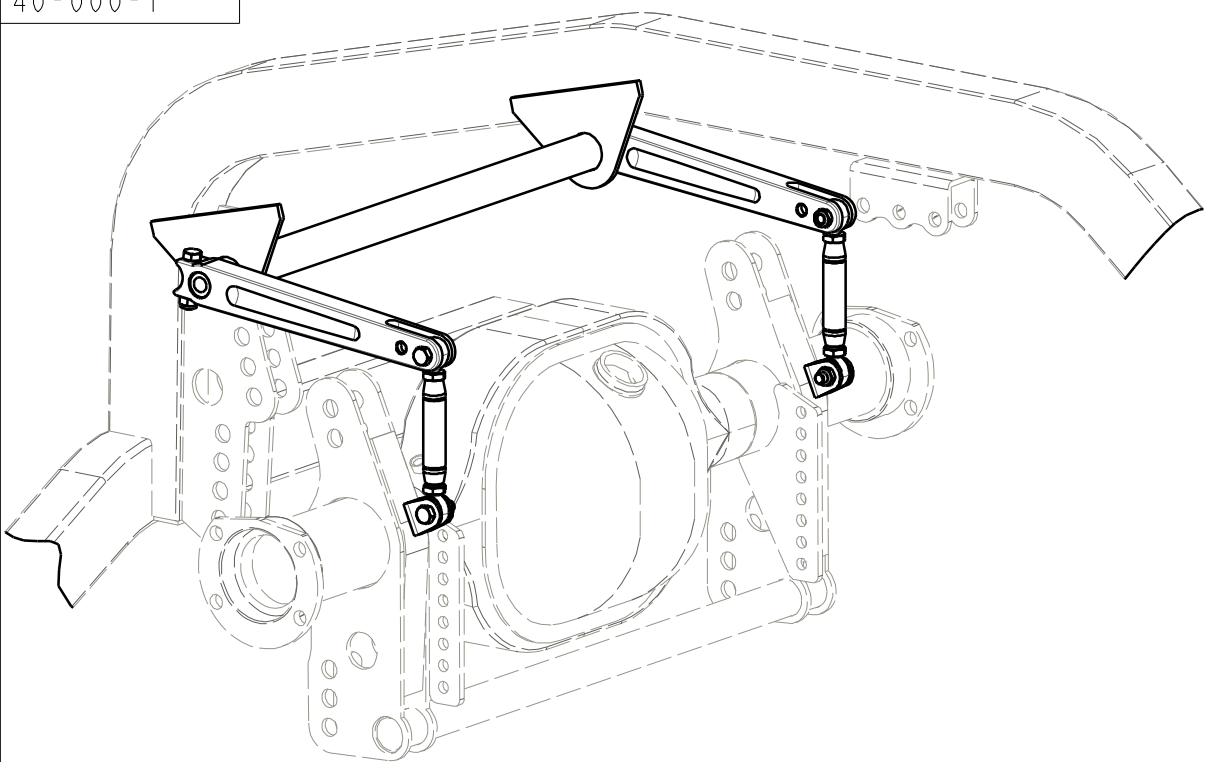
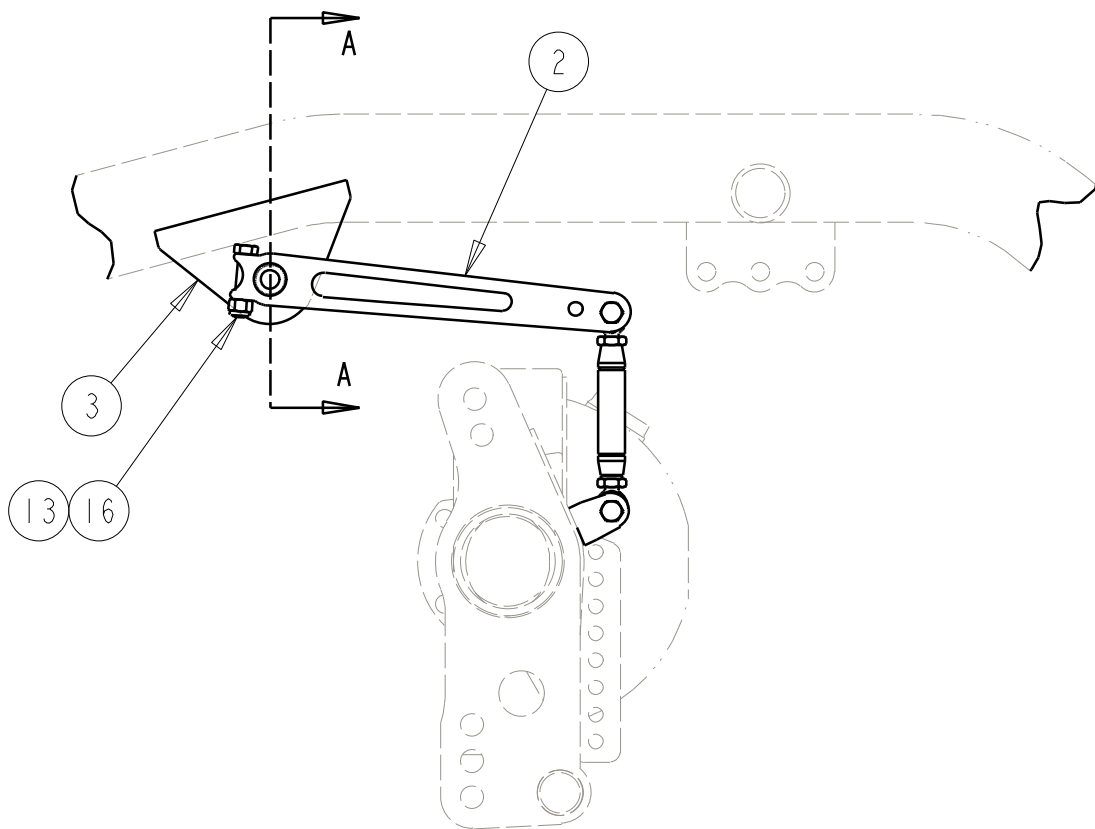


40-000-1



SECTION A-A
SCALE 0.375



NOTE:

1. EITHER HOLE IN ARM CAN BE USED TO ATTACH LINK. THE SHORTER THE EFFECTIVE LENGTH OF THE ARM THE STIFFER THE ANTI ROLL BAR WILL BE.
2. TACK WELD ANTI ROLL BAR KIT IN PLACE AND CHECK CLEARANCE BETWEEN ARMS AND FRAME & ARMS AND 4-LINK BRACKETS ON REAR.
3. DETERMINE LENGTH OF LINK TUBES WITH THE SUSPENSION AT RIDE HEIGHT. ROD ENDS SHOULD HAVE ABOUT SIX THREADS SHOWING WITH JAM NUTS IN PLACE.
4. INITIAL ADJUSTMENT OF LINKS IS TO BE DONE WITH CAR IN RACE TRIM, 4-LINK PRE-LOADED AND SUSPENSION AT RIDE HEIGHT. LINKS SHOULD BE NEUTRAL WITH NO LOAD (BOLT SHOULD SLIP IN AND OUT). PRE-LOADING THE ANTI ROLL BAR CAN BE DONE BY LENGTHENING THE RIGHT SIDE LINK.

BILL OF MATERIALS

ITEM	QTY	PART No.	DESCRIPTION
1	1	40-000-02	23.5" TORSION BAR
2	2	40-007-01	TORSION BAR ARM
3	2	40-007-04	BRACKET - TORSION BAR SUPPORT
4	1	1250X083CMX.....	TORSION BAR OUTER TUBE
5	1	750X058CMX12	LINK TUBE (CUT TO LT)
6	2	60-312	ROD END CLEVIS
7	2	63-080	THREADED TUBE END
8	2	63-081	THREADED TUBE END, LH
9	2	40-007-03	TORSION BAR BUSHING
10	2	64-106	3/8 RHM STD ROD END
11	2	64-306	3/8 LHM STD ROD END
12	2	65-132	3/8 NYLOCK NUT
13	4	65-143	3/8 NYLOCK HALF NUT
14	2	65-024	3/8 X 1" BOLT
15	2	65-025	3/8 X 1 1/4" BOLT
16	2	65-027	3/8 X 1 3/4" BOLT
17	2	65-112	3/8 JAM NUT
18	2	65-113	3/8 LH JAM NUT

S & W RACE CARS
11 MENNONITE CHURCH RD
SPRING CITY, PA 19475

0	27OCT05	JEB	INITIAL RELEASE
REV	DATE	DRN	DESCRIPTION
TOLERANCES: FRACTIONS ±1/32 2 PLC DEC ±0.01 3 PLC DEC ±0.005 ANGLES ±0.5°			ANTI ROLL BAR KIT 40-000 THRU 40-007 GENERAL ARRANGEMENT
MAT'L:			
PART No: 40-000-INST			DRW No: 40-000 - 1