

40-725-1

INSTALLATION INSTRUCTIONS

1. RAISE AND SUPPORT CAR UNDER THE FRAME AND REAR HOUSING SO THAT THEY DO NOT MOVE WHEN THE CONTROLL ARE IS REMOVED.

2. REMOVE & INSTALL ONE LOWER CONTROL ARM AT A TIME. USE CATION THE LOWER CONTROL ARM HAS A LOAD ON IT FROM THE SPRING. PLACE A JACK UNDER THE BACK OF THE LOWER CONRTROLL ARM. REMOVE THE REAR BOLT AND LOWER THE JACK. REMOVE THE FRONT BOLT AND CONTROLL ARM.

3. ASSEMBLE & INSTALL ONE NEW LOWER CONTROL ARM. SET THE LENGTH OF THE CONTROL ARM THE SAME AS THE CENTER DISTANCE OF THE STOCK ARM. THE OD OF THE STEEL SLEEVE & THE SIDES OF THE POLY BUSINGS SHOULD HAVE A SMALL AMOUNT OF PRE-LUBE APPLIED TO THEM. THE NEW CONTROLL ARM SHOULD BE INSTALLED IN THE OPPOSITE ORDER IT WAS REMOVED: ATTACH FRONT, PLACE SPRING ON ARM, JACK ARM INTO PLACE, INSTALL REAR BOLT. FOR EASE OF INSTALATION SCREW THE SPRING SEATS ALL THE WAY DOWN. DO NOT TIGHTEN BOLTS AT THIS TIME.

4. REPEAT STEPS 2 & 3 FOR THE OTHER SIDE.

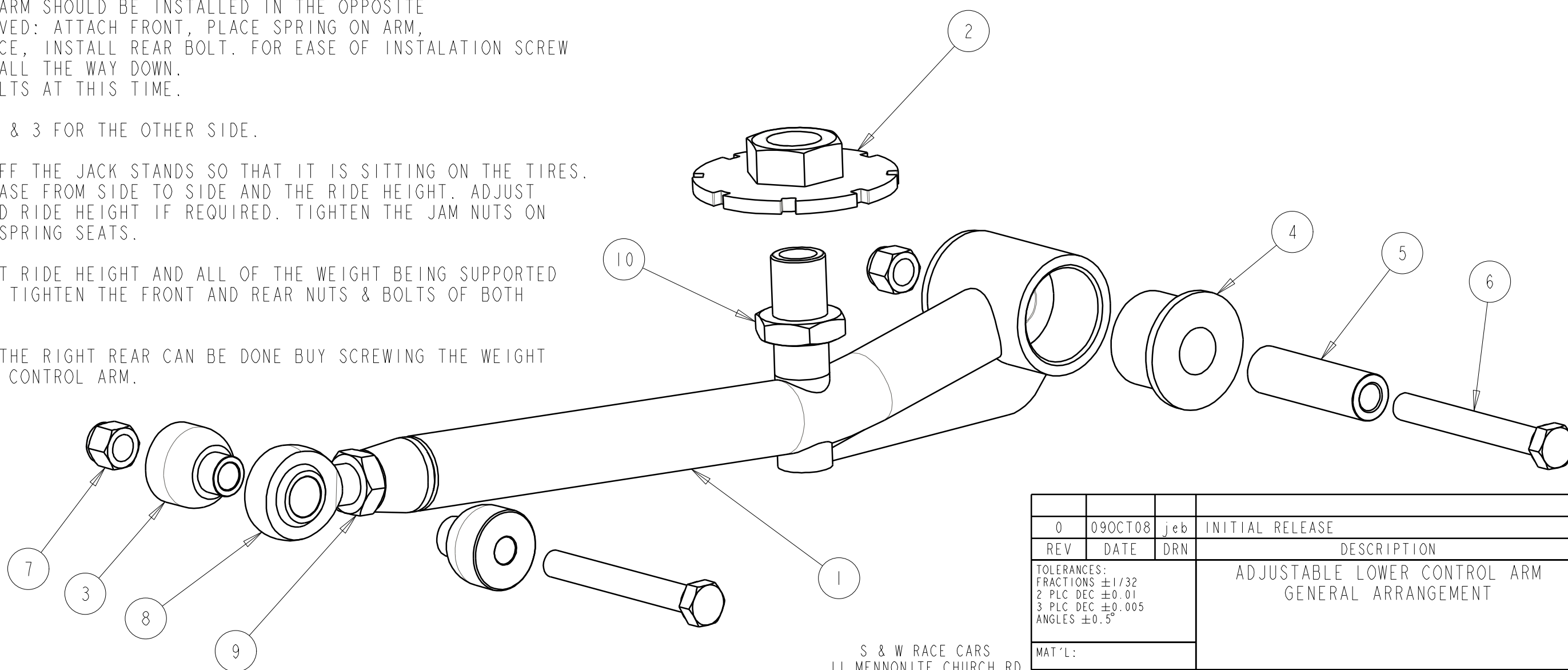
5. TAKE THE CAR OFF THE JACK STANDS SO THAT IT IS SITTING ON THE TIRES. CHECK THE WHEEL BASE FROM SIDE TO SIDE AND THE RIDE HEIGHT. ADJUST THE WHEEL BASE AND RIDE HEIGHT IF REQUIRED. TIGHTEN THE JAM NUTS ON THE ROD ENDS AND SPRING SEATS.

6. WITH THE CAR AT RIDE HEIGHT AND ALL OF THE WEIGHT BEING SUPPORTED BY THE SUSPENSION TIGHTEN THE FRONT AND REAR NUTS & BOLTS OF BOTH CONTROL ARMS.

NOTE: PRELOADING THE RIGHT REAR CAN BE DONE BUY SCREWING THE WEIGHT JACKER UP ON THAT CONTROL ARM.

BILL OF MATERIALS

ITEM	QTY	PART No.	DESCRIPTION
1	2	40-725-01	ADJ LOWER CONTROL ARM WELDMENT
2	2	40-725-02	ADJ SPRING PLATE
3	4	40-725-03	ROD END SPACER
4	4	40-721-03	POLY BUSHING
5	2	40-721-02	STEEL SLEEVE
6	4	65-052	1/2 X 4" LG BOLT
7	4	65-135	1/2 NYLOCK NUT
8	2	64-112	3/4 X 3/4 RHM ROD END
9	2	65-120	3/4 JAM NUT
10	2	65-125	1-8 JAM NUT



S & W RACE CARS  
11 MENNONITE CHURCH RD  
SPRING CITY, PA 19475

0	09OCT08	jeb	INITIAL RELEASE
REV	DATE	DRN	DESCRIPTION
TOLERANCES: FRACTIONS ±1/32 2 PLC DEC ±0.01 3 PLC DEC ±0.005 ANGLES ±0.5°			ADJUSTABLE LOWER CONTROL ARM GENERAL ARRANGEMENT
MAT'L:			
PART No: 40-725			DRW No: 40-725 - 1