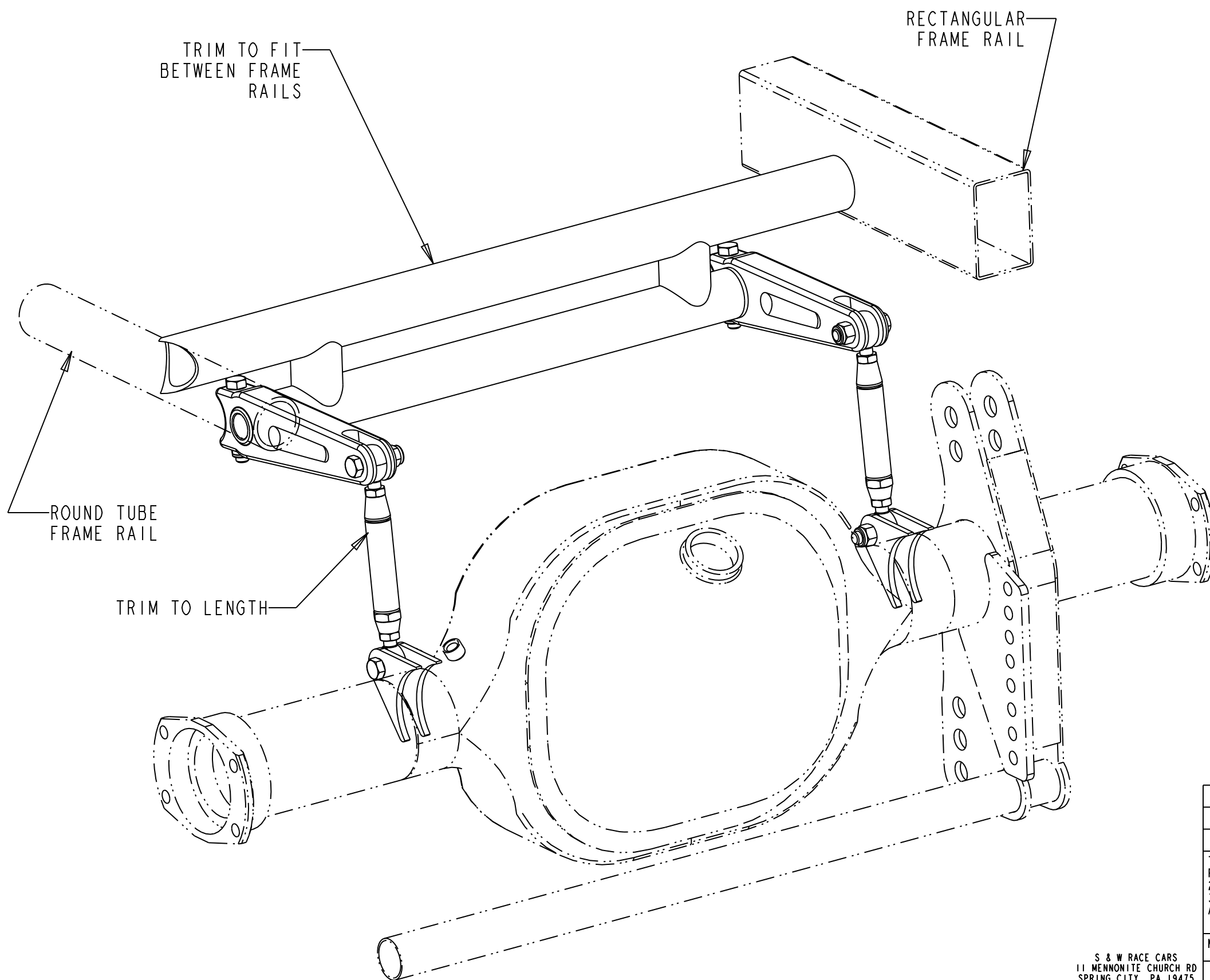


40-090-1

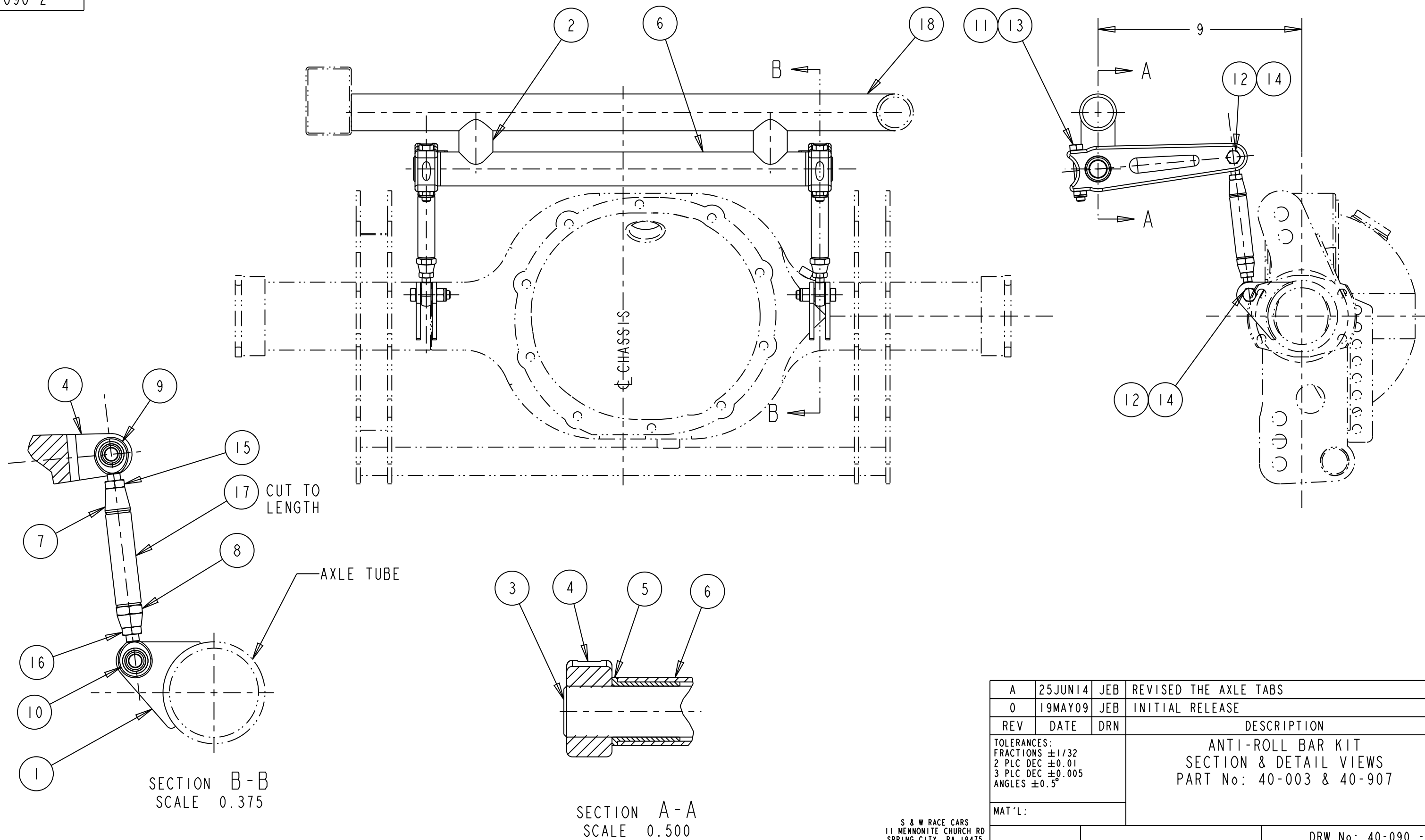


BILL OF MATERIALS

ITEM	QTY	PART No.	DESCRIPTION
1	4	60-348	AXLE TUBE BRKT
2	2	40-907-02	TUBE STUB
3	1	40-900-XX	TORSION BAR
4	2	05-015	6" X 1 1/8" TORSION ARM
5	2	40-902	TORSION BAR BUSHING
6	1	1500X095CMX..	TORSION BAR TUBE
7	2	63-080	THREADED TUBE END
8	2	63-081	THREADED TUBE END, LH
9	2	64-106	3/8 RHM STD ROD END
10	2	64-306	3/8 LHM STD ROD END
11	2	65-143	3/8 NYLOCK HALF NUT
12	4	65-026	3/8 X 1 1/2" BOLT
13	2	65-029	3/8 X 2 1/4" LG BOLT
14	4	65-132	3/8 NYLOCK NUT
15	2	65-112	3/8 JAM NUT
16	2	65-113	3/8 JAM NUT, LH
17	2	750X058CMX12	3/4"Ø X 0.058 TUBING
18	1	1625X134	1 5/8"Ø X 0.134 TUBING

A	25JUN14	JEB	REVISED AXLE TUBE BRKT'S
0	19MAY09	JEB	INITIAL RELEASE
REV	DATE	DRN	DESCRIPTION
TOLERANCES: FRACTIONS ±1/32 2 PLC DEC ±0.01 3 PLC DEC ±0.005 ANGLES ±0.5°			ANTI-ROLL BAR KIT GENERAL ARRANGEMENT 40-090, 40-091, 40-092, 40-097 & 40-614
MAT'L:			
		PART No:	DRW No: 40-090 - 1

S & W RACE CARS
 11 MENNONITE CHURCH RD
 SPRING CITY, PA 19475



A	25JUN14	JEB	REVISED THE AXLE TABS
0	19MAY09	JEB	INITIAL RELEASE
REV	DATE	DRN	DESCRIPTION
TOLERANCES: FRACTIONS $\pm 1/32$ 2 PLC DEC ± 0.01 3 PLC DEC ± 0.005 ANGLES $\pm 0.5^\circ$			ANTI-ROLL BAR KIT SECTION & DETAIL VIEWS PART No: 40-003 & 40-907
MAT'L:			
			DRW No: 40-090 - 2

S & W RACE CARS
 11 MENNONITE CHURCH RD
 SPRING CITY, PA 19475