

TABASSUM MUGHAL



Wild Tribal Orchid

COLLECTION '23

Wild Tribal

Orchid

The word 'Orchid' is written in a large, bold, purple serif font. The letters are filled with a solid purple color. Behind the letters, there is a cluster of orchid flowers. The flowers are primarily purple with white and red accents. The petals are large and delicate, with some showing a mix of colors. The center of the flowers is a vibrant red with yellow and white patterns. The background is white, making the purple and colors of the flowers stand out.

Exotic hues, exquisite silks and glossy finishing touches awaits with bold embroideries. Draped shalwars with daring embroidery with creative ribbon and applique work to give a funky luxury feel.

FUSHA TRIBE







ELU



LILAC

STYLING









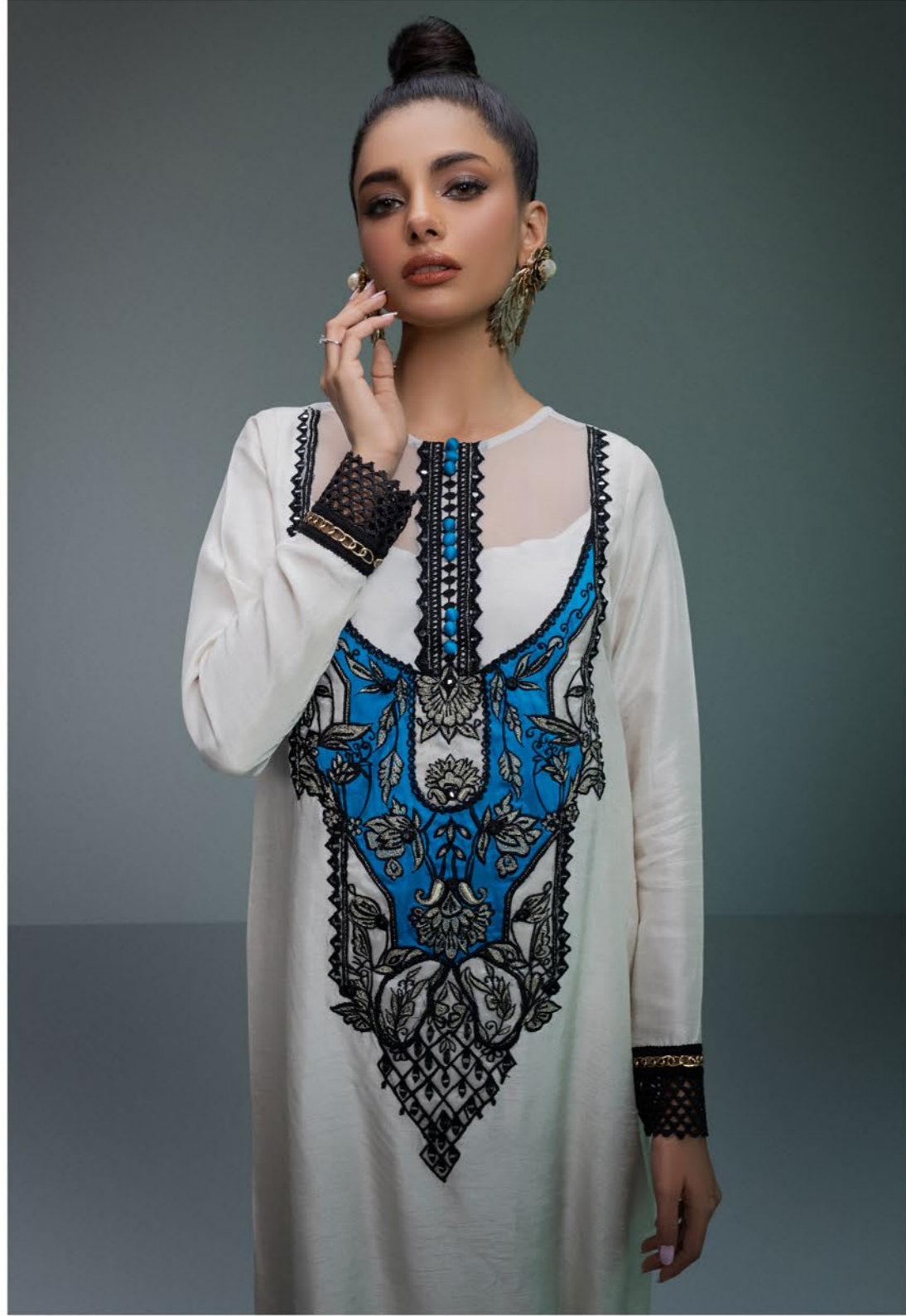


MIRA



ANGELITE







DAUK

AUK







ZUNI







YAYANA

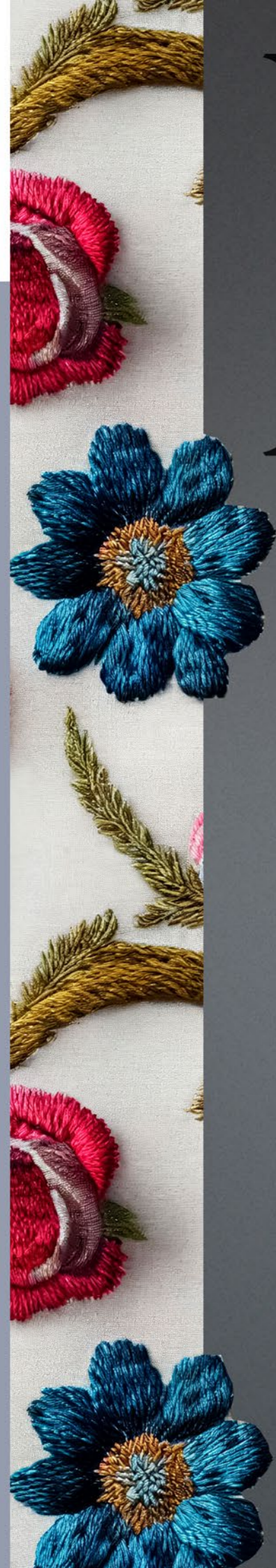






RENDS SEPTMBER

MOLIA





NORA





HAANA





WANA







