

IRONZON SMART DOOR LOCK

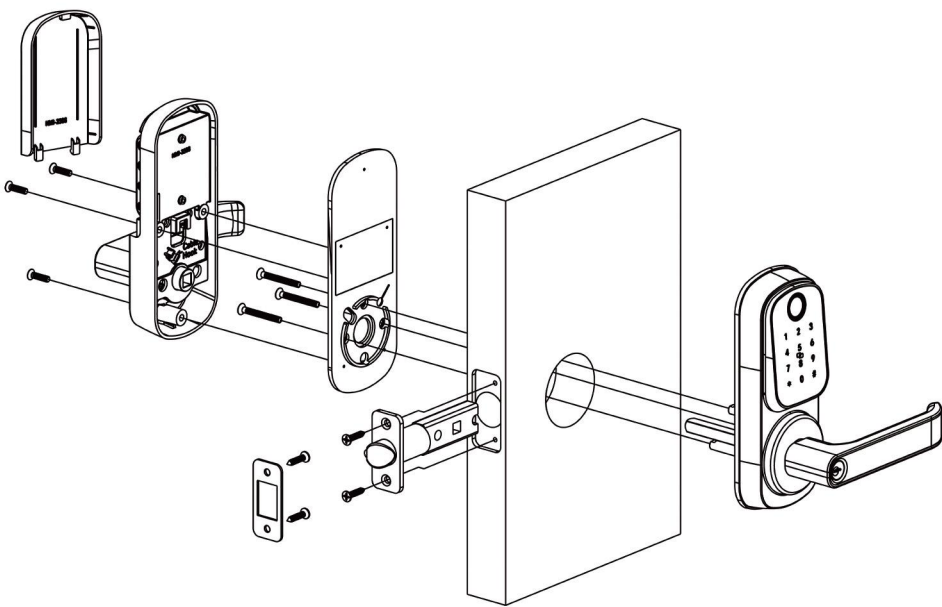
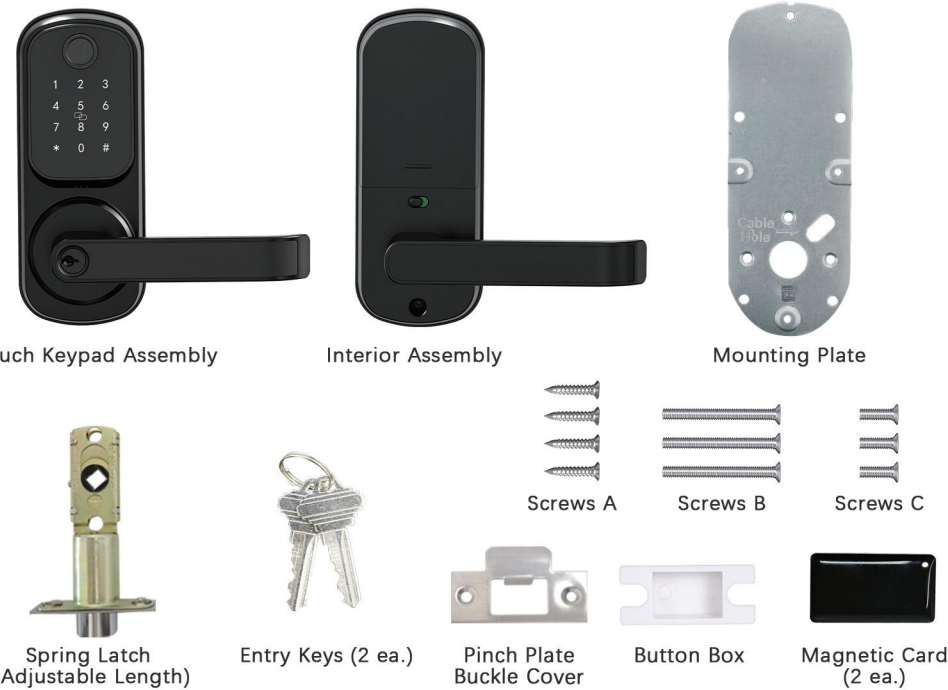


Installation Video

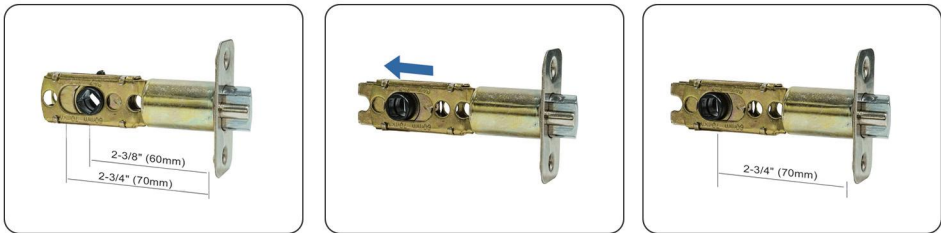
Please watch this video first
and use this manual as a guide.



Packing List



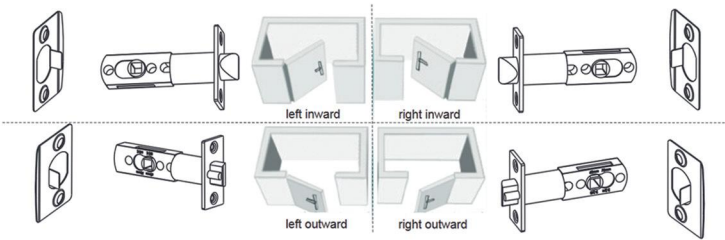
STEP 1: Adjust Latch Length



The length of the latch can be adjusted from 60mm(2-3/8") to 70mm(2-3/4") to accommodate two different distances from the door hole to the door side.

Hold the square hole of the latch and pull it outward until it can no longer be pulled.

Now the latch length is adjusted to 70mm(2-3/4").



⚠ Note: Pay attention to the direction of the Spring Latch and Pinch Plate Buckle Cover when you installing.

STEP 3: Adjust Lock Handle Direction

3.1 Exterior handle direction

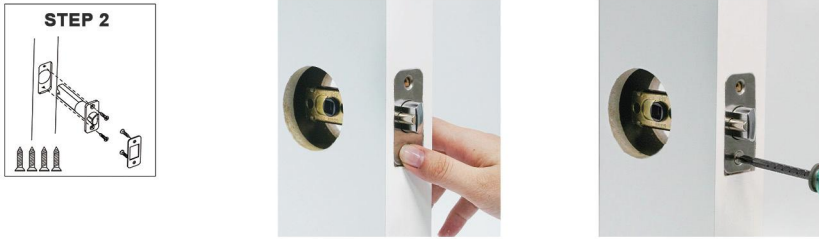


⚠ Note: To change the direction of the handle.



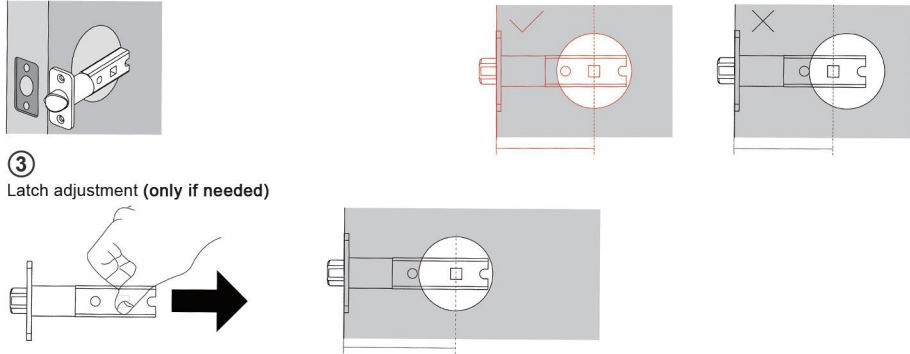
Turn the handle while pulling the spring **outward**, and then release the spring when the handle is in the correct position.

STEP 2: Install the Latch and Adjust the Backset of Latch (if needed)



① Hold the latch in front of the door hole, with the latch face flush against the door edge.

② If the latch holes are centered in the door hole, no adjustment is required. Proceed to step 2. If latch holes are NOT centered, adjust latch. See "Latch Adjustment."



3.2 Interior handle direction



⚠ Note: To change the direction of the handle.



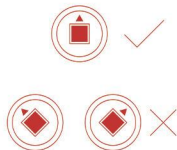
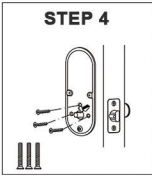
Remove the battery cover and screws

Remove the back panel and adjust the handle

Reinstall screws

STEP 4: Install Front Panel

①



IMPORTANT! Ensure the "△" on lock spindle is facing upside before put the spindle through the square hole. Incorrect orientation will cause lock to fail.

②



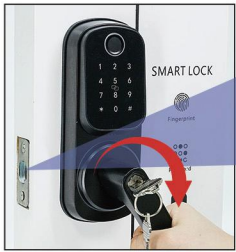
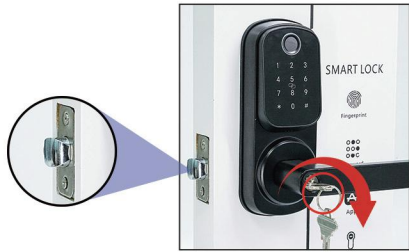
STEP 5: Connect Wire Connector



STEP 6: Install Back Panel



Step 7: Insert the Key and Test the Installation



Install Our Lock on Top (only if needed)



! If the distance is a problem, you can put the door lock on the upper position.

FCC

This equipment has been tested and found to comply with the limits for a Class B digital device, pursuant to part 15 of the FCC Rules. These limits are designed to provide reasonable protection against harmful interference in a residential installation. This equipment generates, uses and can radiate radio frequency energy and, if not installed and used in accordance with the instructions, may cause harmful interference to radio communications. There is no guarantee that interference will not occur in a particular installation. If this equipment does cause harmful off and on, the user is encouraged to try to correct the interference by one or more of the following measures.

- Reorient to relocate the receiving antenna.
- Increase the separation between the equipment and receiver.
- Connect the equipment into an outlet on a circuit different from that to which the receiver is connected.
- Consult the dealer or an experienced radio /TV technician for help.

Warning: Changes or modification to this device, not expressly approved by us could void the user 's authority to operate the equipment.

Reset Method

①



Press and hold the reset button for 5 seconds.

②



Enter "000" + "#".

③



The reset is successful.

! After successful installation, please restore factory Settings immediately to avoid APP connection problems.

After-Sales Service

If you have any problem during installation or operation, please contact us.

Our E-mail is support@ironzon.com