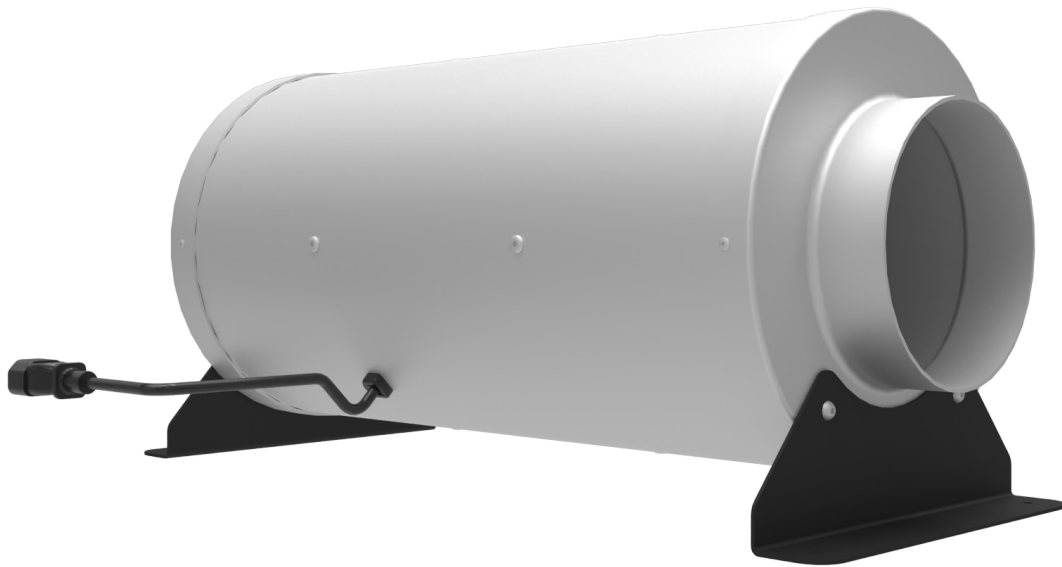




Mistral-150

[DT-M-150]

Silenced inline 150mm fan module with brushless EC motor and Mistral Commander interface



DT AIRFLOW

MISTRAL-150 [DT-M-150]

Silenced inline 150mm fan module with brushless EC motor and Mistral Commander interface

DT Mistral-150 is a silenced inline 150mm fan module with an advanced brushless EC motor and featuring a special interface to enable full monitoring and control by the Mistral Commander. The DT-M-150 delivers up to 550 cubic meters per hour of airflow.

PRODUCT HIGHLIGHTS:

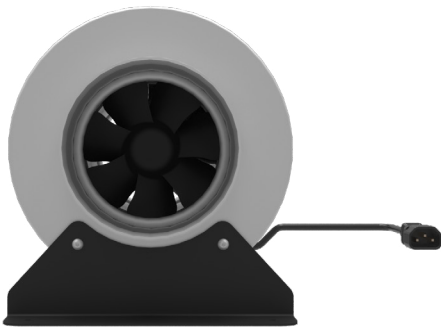
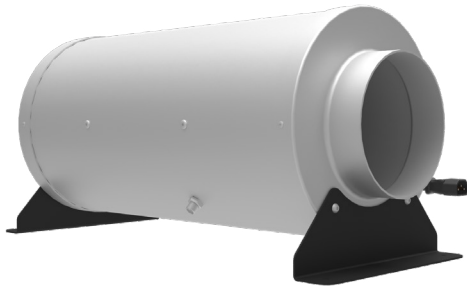
- EC Silenced Fan
- Mistral Commander control interface
- 550 Cubic M per hour
- Supplied with Acoustic Ducting



Mistral-150

[DT-M-150]

Silenced inline 150mm fan module with brushless EC motor and Mistral Commander interface



The silenced Mistral-150 mounting plate includes **isolation fittings to minimise vibration** and is supplied with 6m of perforated acoustic ducting to ensure the quietest possible air movement solution.

The M-150 contains an advanced **brushless EC Motor with Mistral Commander Interface**. The interface enables full reporting of fan speed and accurate speed control between 0-100% of full output. This enables M-150 to only operate when required for maximum efficiency.

The M-150 delivers up to **550 cubic meters per hour of airflow** and is ideal for applications with a heat load up to 2500 BTU/hr.

TECHNICAL SPECIFICATION:

- Inlet duct size – 150mm [6"]
- Outlet duct size – 150mm [6"]
- Weight – 5.2kg [11.46lbs]
- Supplied with:
 - 2 x 3m 150mm [6"] acoustic flexible duct



Scan the QR code or follow the link info.displaytechnologies.co.uk/DT-M-150 for full product information.