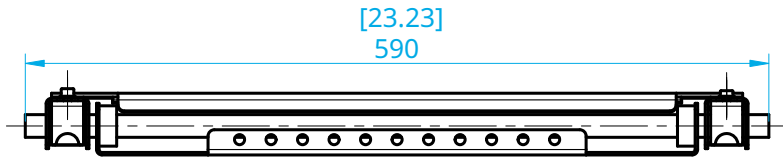
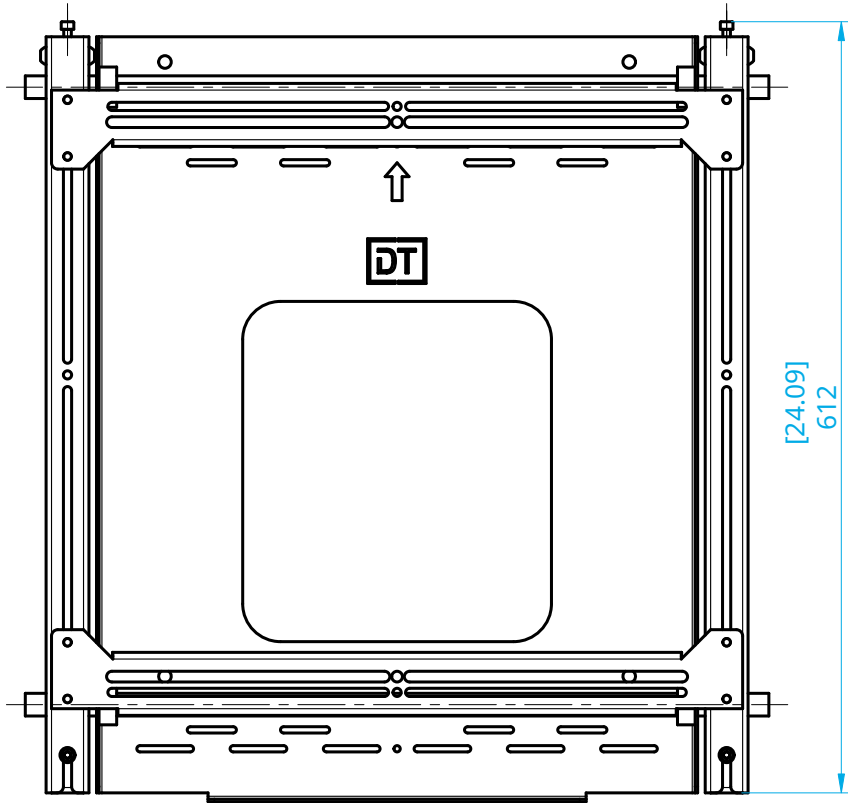


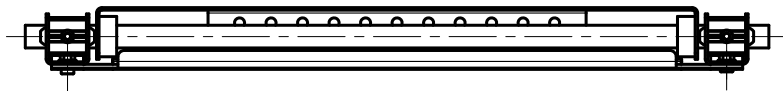
		Display Technologies Ltd www.displaytechnologies.co.uk info@displaytechnologies.co.uk		SIZE A4	TITLE DT-CM FIXED PROJECTOR CEILING MOUNT	
				SCALE 1:4		
APPROVAL SIGNATURE		Approval Date		UNLESS OTHERWISE SPECIFIED, DIMENSIONS ARE IN MILLIMETERS		QUOTE REF. DT-CM
				ALL DRAWINGS ARE SUBJECT TO CHANGE AS WE CONTINUALLY DEVELOP OUR PRODUCTS WHICH FROM TIME TO TIME WE WILL RELEASE AS PART OF OUR CONTINUAL IMPROVEMENT PROCESS. DRAWINGS ARE SUBJECT TO OUR NORMAL MANUFACTURING TOLLERANCE.		DATE 2022-05-20



Back



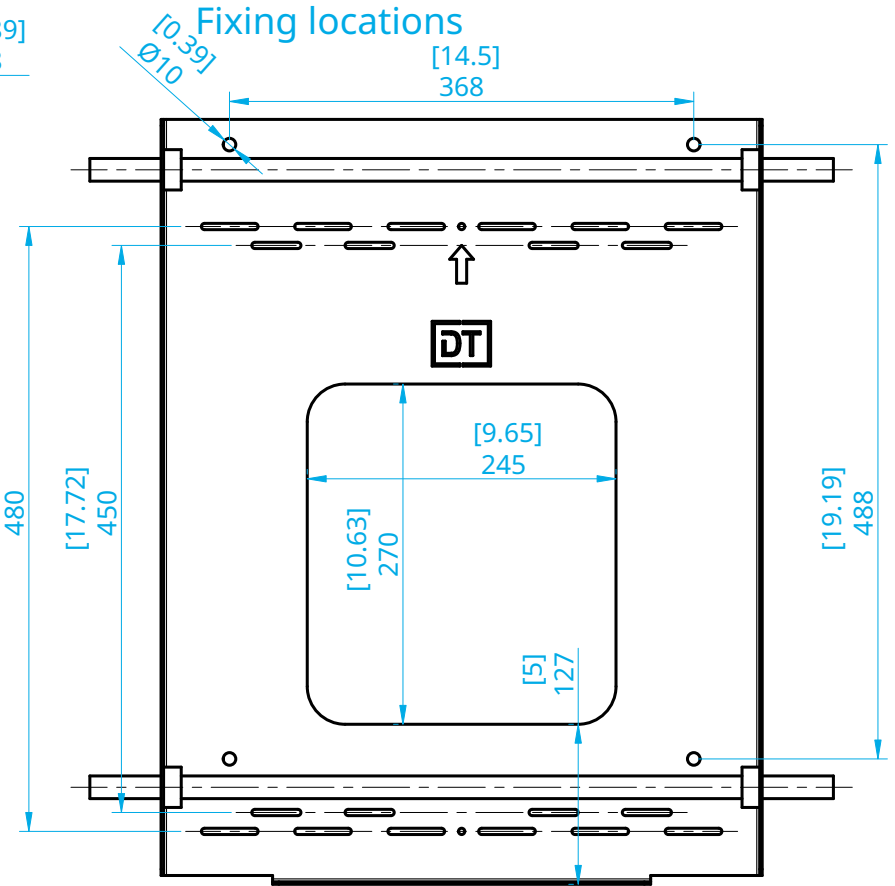
Bottom



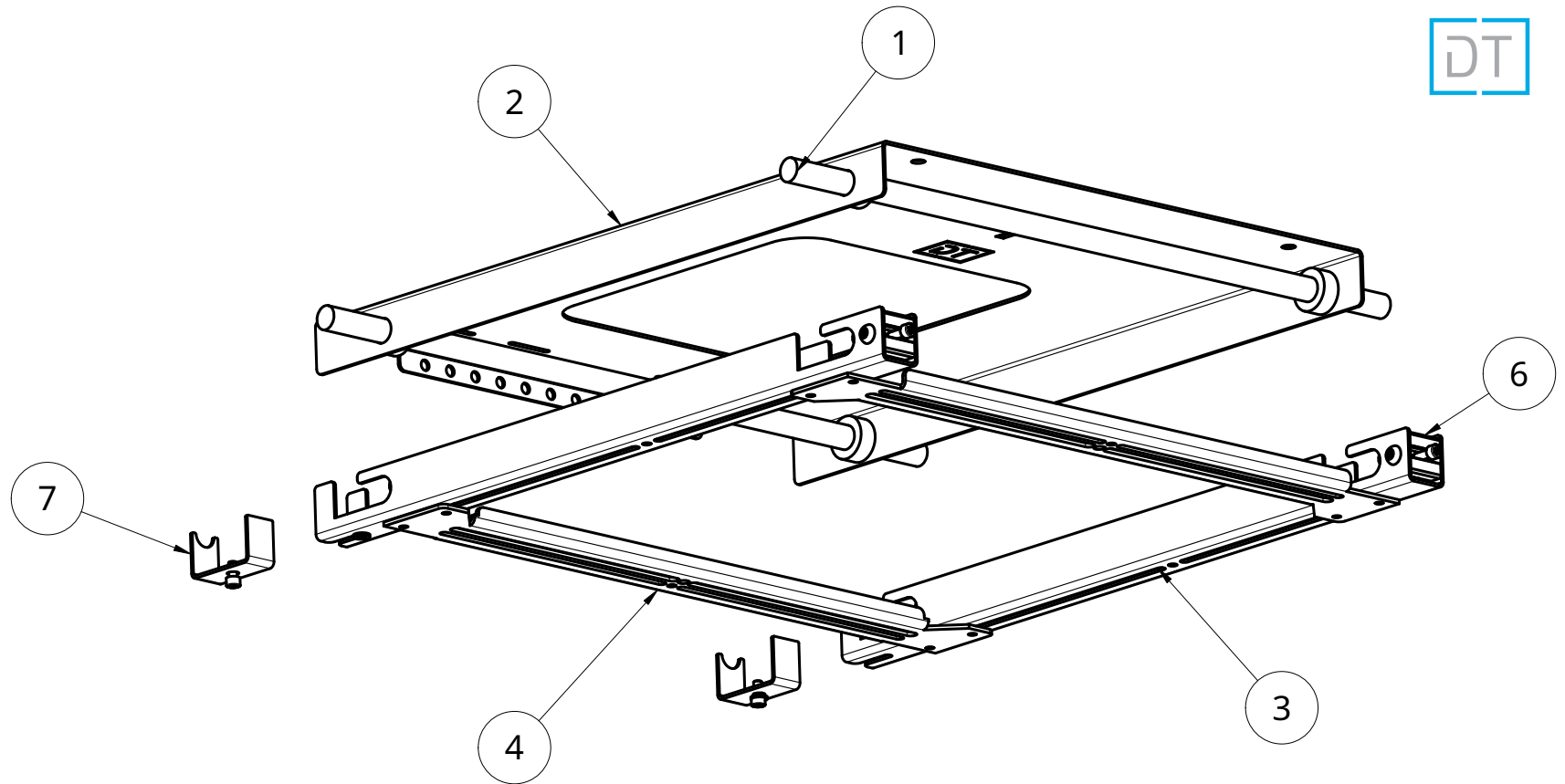
Top



Left



Back Plate Only



Item	Description
1	Hanging Shaft
2	Back Fixing Plate
3	Hanger
4	Projector Mount
5	Hanger
6	30x30 - 30mm
7	Lock Plate

Notes	
Max Projector Weight	50kg [110lbs]
Max Projector Fixing Dimensions	454mm x 454mm [17.87" x 17.87"] M8
Rotation Ajustment	+/- 5 degrees
DWG NO.	DT-CM/3
SIZE	A4
SCALE	1:5
SHEET	3 of 4
REV.	C1

Packaging

Type	Cardboard Box
Recyclable	Yes
Gross Weight	16kg [35.28lbs]
Product Net Weight	10.3kg [22.7lbs]



Dimensions

