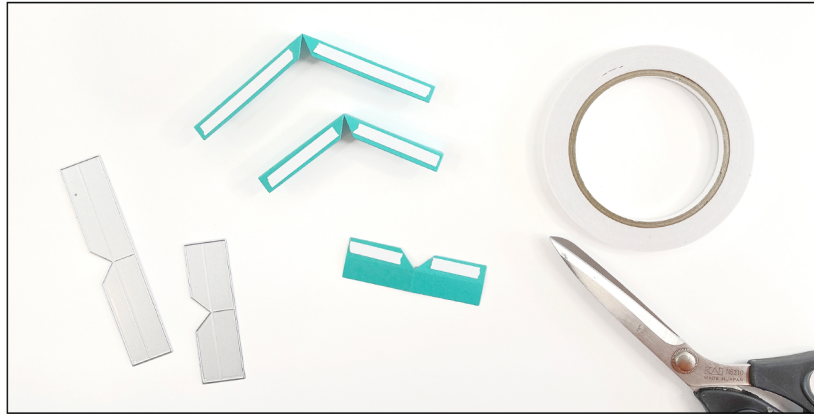
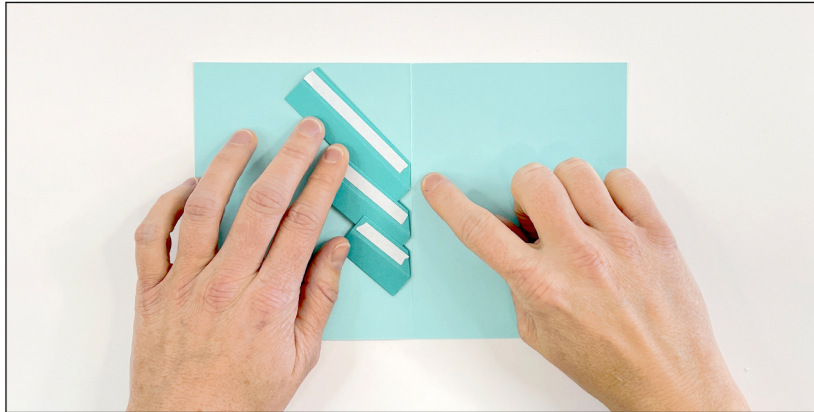


POP-UP BASE DIES INSTRUCTIONS



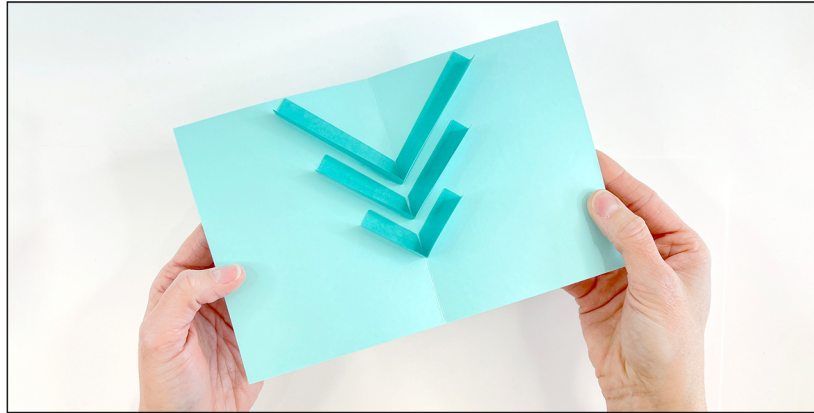
1. Die cut the pop-up base pieces. Fold along the score lines to create a v-shape. Add $\frac{1}{4}$ " double-sided tape along the tabs.



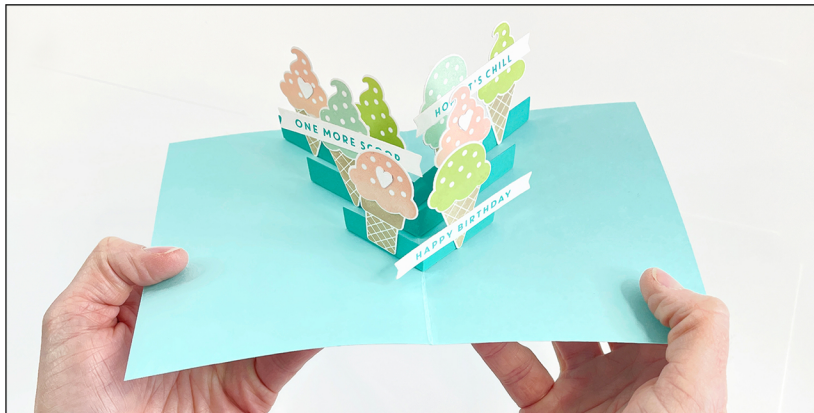
2. Starting with the back piece, fold it in half and align it parallel to the score line of the card. Take off the tape backer and adhere to the left side of the card. Repeat the same steps for the other pop-up base pieces staggering them about $\frac{1}{4}$ ".



3. Make sure all three pop-up pieces are folded in half. Take the tape backer off of the top side of each piece and close the card, adhering the pieces to the right side of the card.



4. Open the card and now you have the base for your pop-up card.



5. Add any stamps and dies to the base pieces to create a pop-up card.
(Shown here with Birthday Scoops Stamps & Dies).