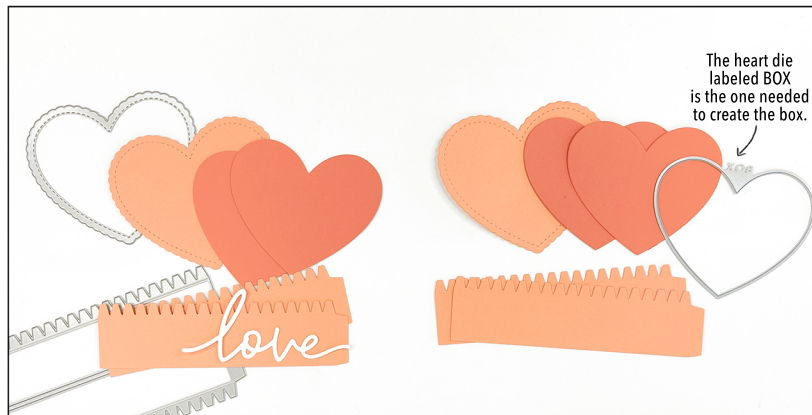
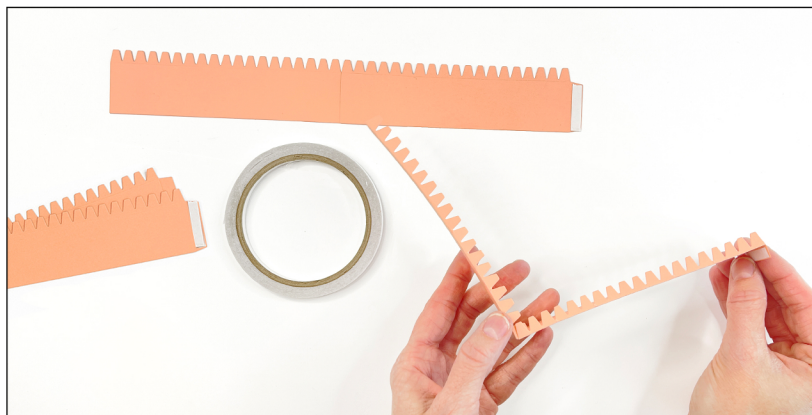


HAPPY HEART BOX INSTRUCTIONS



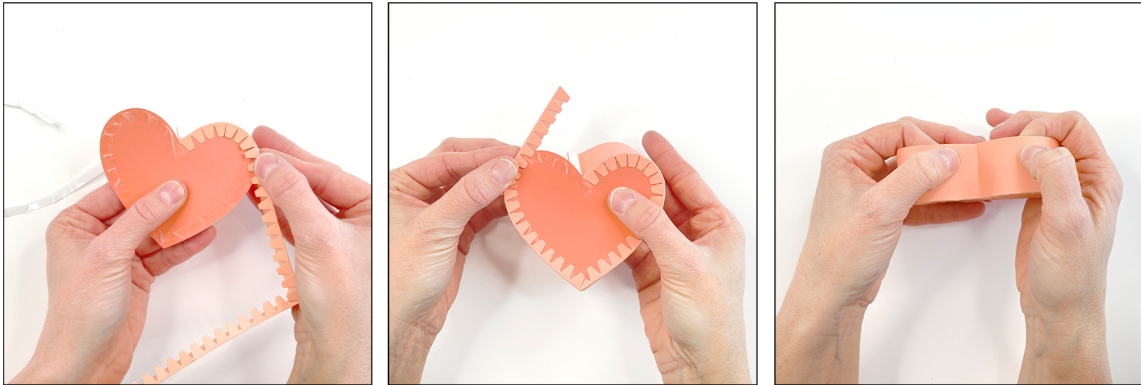
1. Die cut all the pieces. The lid and the bottom are cut from the same dies. You will need one set of die-cuts for the lid and one set for the bottom. One set includes: 1 scallop heart, 2 box hearts, and 2 side walls.



2. Place tear tape on the tabs of both side wall pieces. Adhere the side wall pieces together using one of the tabs. Fold the side wall on the score line where you just adhered them together to form a V shape. Fold all the teeth at the score line. Fold the remaining tab the opposite direction towards the outside.



3. Apply tear tape along the edge of the heart. Get as close as you can to the edge. Press down firmly to make sure the tape is secure. This doesn't need to look pretty, it will be covered up after the side walls are attached.



4. Peel off the adhesive backing. Place the tab side of the wall in the center of the heart and fold the teeth over onto the adhesive and press firmly. Follow the heart all the way around and finish by securing the end of the wall on the tab.



5. Apply adhesive to the bottom of the heart. Position it along the stitching on the scallop heart. Press firmly to adhere.



6. Repeat the same steps for the bottom of the box. The two pieces will slide together to form the heart box. Use stamps, dies and other embellishments to decorate the lid of the box. Fill with a treat or small gift and give to a friend!