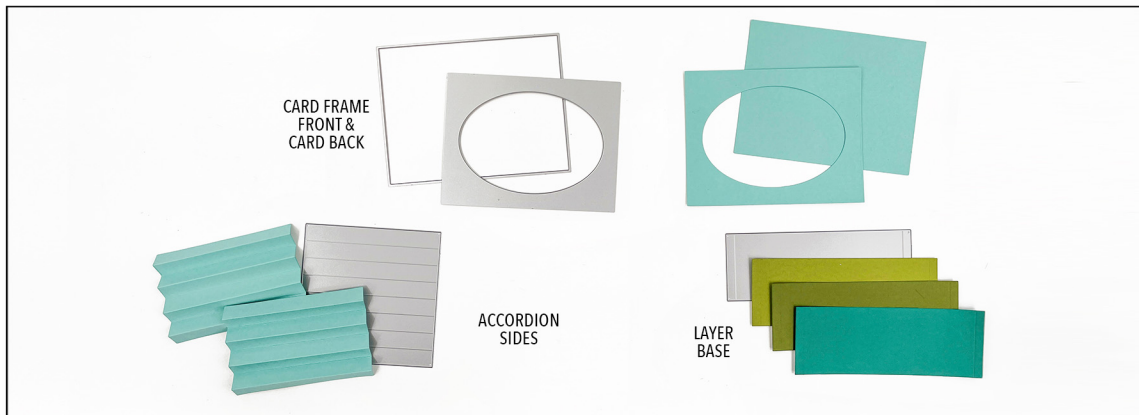
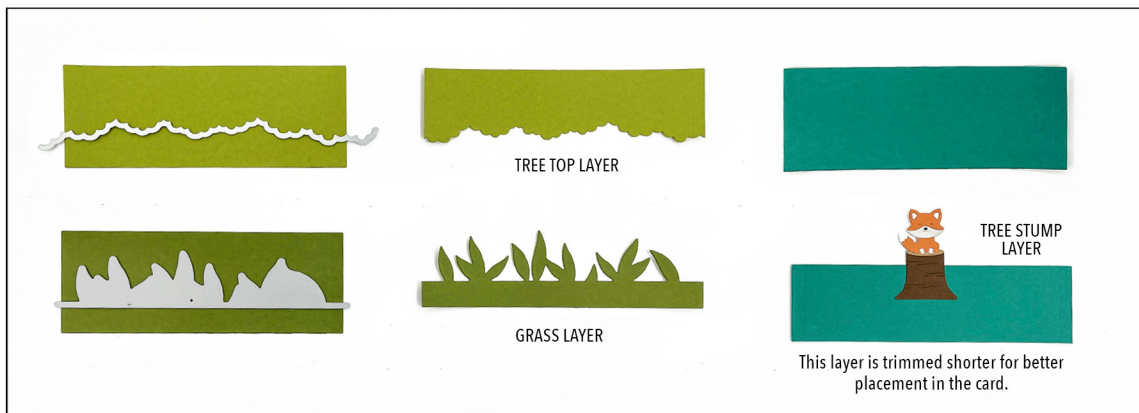


# ACCORDION CARD BASE DIES

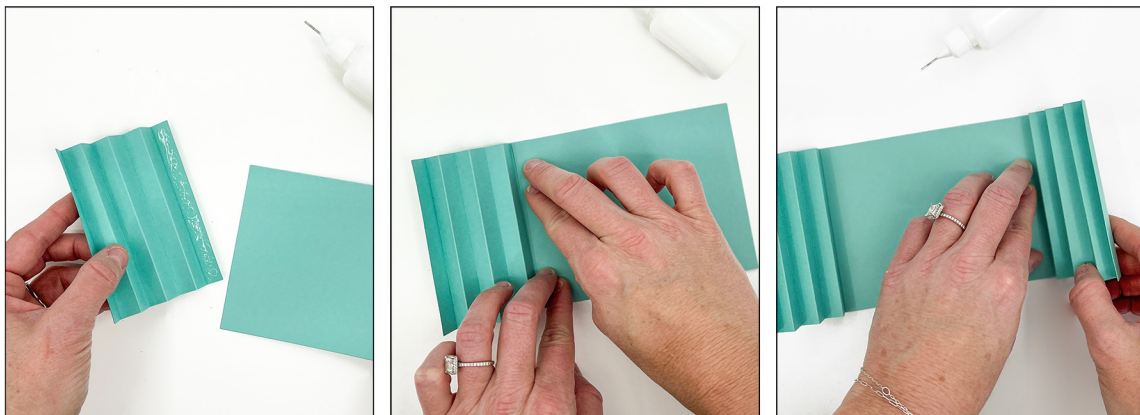
## INSTRUCTIONS



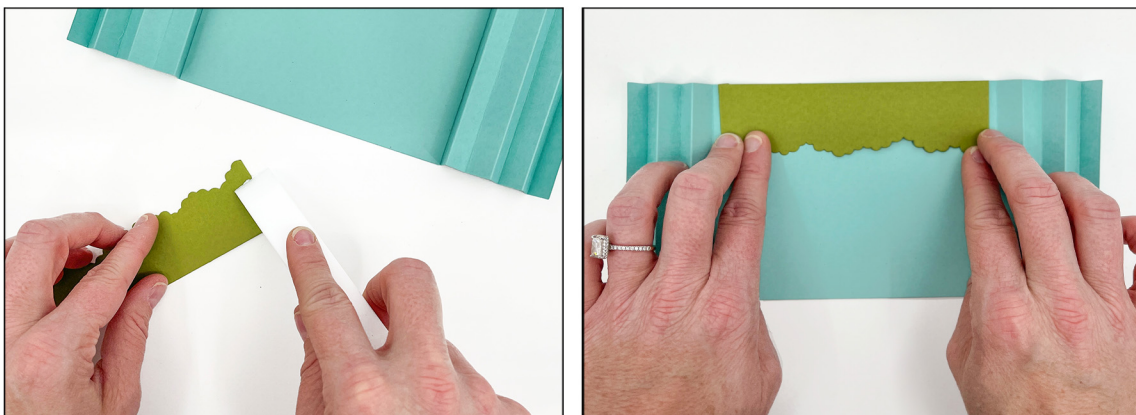
1. Die cut all the pieces. Use the rectangle and oval frame dies together to cut the card frame front. Use just the rectangle die to cut the card back. Cut two accordion sides and fold on score lines. Cut as many layer base pieces that are needed for your card.



2. Use the edge dies to cut the layer base die-cuts. Trim the layer base pieces as needed to achieve various height levels on the card. You can also adhere images directly to the layer base die-cut. The dies pictured are from the Accordion Woodland Dies.



3. Apply glue to the last tab of the accordion side. Line up and adhere to the card back. Repeat the process with the second accordion piece on the other side.



4. Fold the tabs of the tree-top layer piece. Apply glue to the tabs. Press down the first set of accordion folds and align the tree-top layer to the top of the card and adhere to the folds. Adhere both sides at the same time so that the tree top layer remain flats.

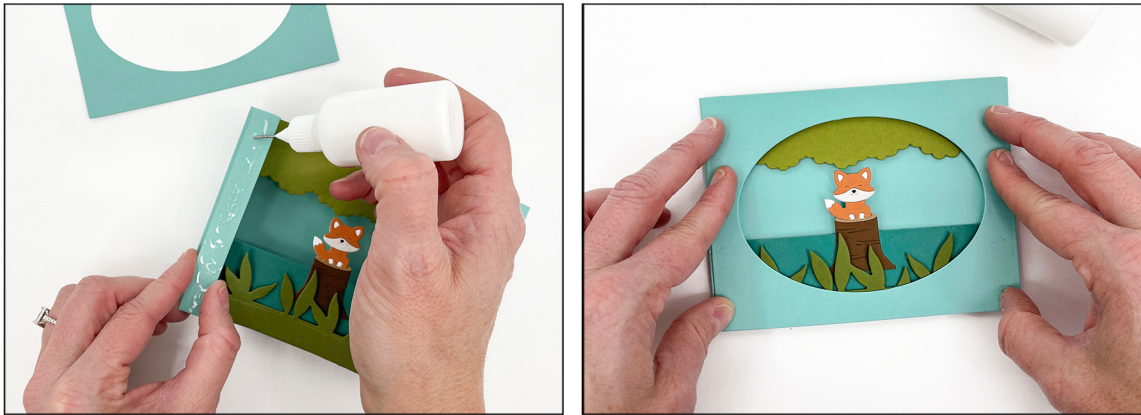


5. Fold the tabs of the stump layer piece and add glue. Press down the next set of accordion folds. Align the tree stump layer with the bottom of the card and adhere both sides at the same time. Be sure to hold the folds down tight during this process so that all the layers remain flat when the card is pushed down and opened.

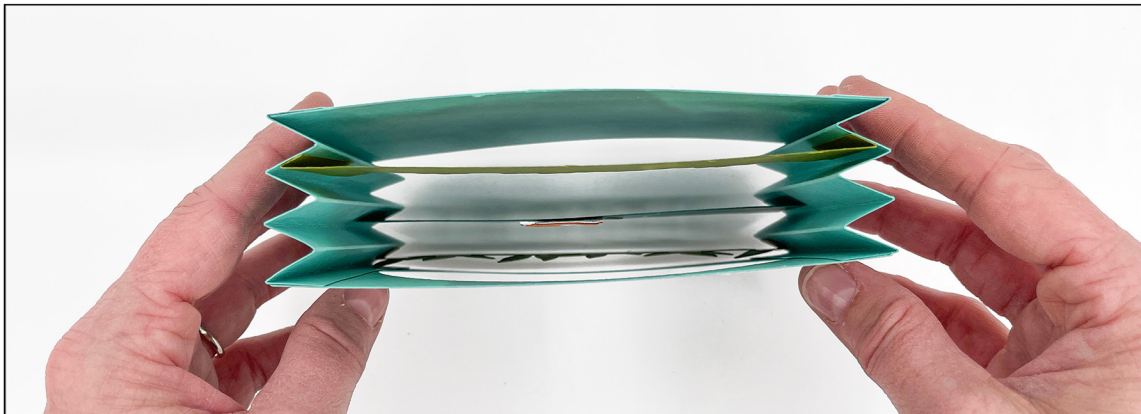


6. Press down the next set of accordion folds and repeat the same steps above for the grass layer.





7. Apply glue to the remaining tabs. Adhere the oval frame front piece to the tabs by pressing down both sides at the same time. Be sure to hold down all the folds tightly when doing this so that the structure of the accordion card remains even.



8. This is the top view of the accordion card. You'll see the layers are straight. By holding everything tight when gluing it together, it prevents the layers from buckling and the card will fold down and open easily.



9. The basic construction of the accordion card is complete. The Accordion Birthday and Accordion Woodland bundles were specifically designed with this card base in mind. However, you can also use any existing products to create an accordion card.