

Care & Maintenance Guide



Step 'n Wash



Taking Care of Your **Step 'n Wash**

3 simple steps

Ensure your Step 'n Wash is in good working order for your visitors.

By performing regular maintenance and replacing certain parts when needed, your Step 'n Wash can provide a boost for many years to come.



Cleaning

Thanks to its stainless steel construction, cleaning is a breeze. Use any stainless steel cleaner on the Step 'n Wash, and use a mild soap or cleaner to clean the rubber tread and product label.

Inspection

Step 'n Wash units should be inspected on a weekly basis. Pull the step down and ensure it stops at a horizontal level. Ensure the hex bolts on the side supports and lock nuts on the floor anchors are secure.

Replacement Parts

Customers typically replace the internal gas spring, external rubber tread, and product label every 2 - 3 years. The following pages contain instructions on how to quickly and easily replace these parts.

With these simple steps, you'll keep your Step 'n Wash in excellent condition, ensuring the safety of your guests!

Gas Spring

(shock, strut, cylinder, or piston)

Step 'n Wash

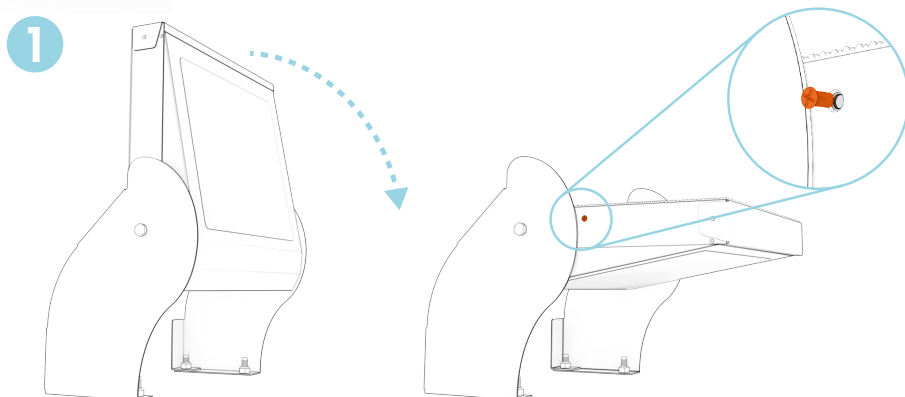
The gas spring is what helps Step 'n Wash retract to the upright position when not in use.

If your Step 'n Wash is stuck in the down or horizontal position, the gas spring must be replaced.

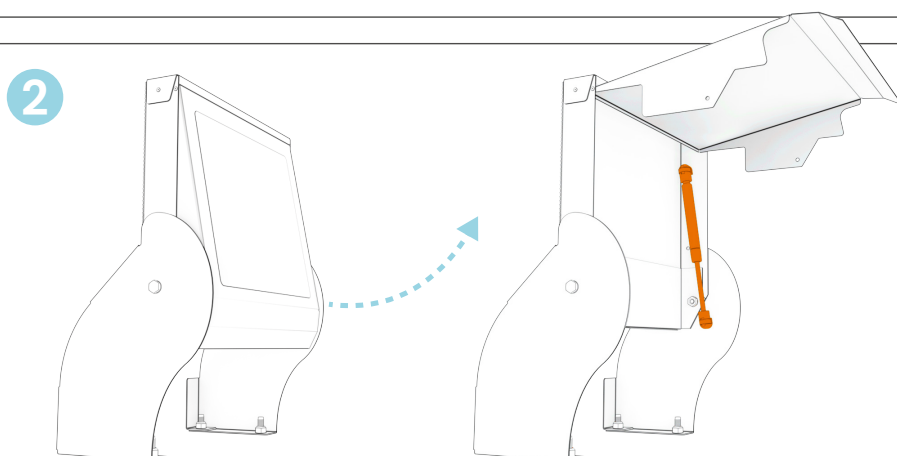
Luckily, it's a quick replacement!

How to:

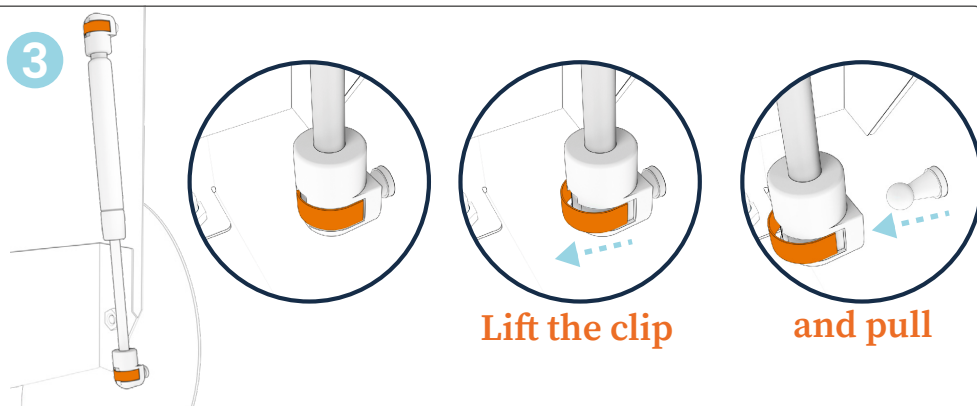
Pull the step down and remove the **small screws on both sides** using a Phillips head screwdriver.



Place the step in a vertical position again and **lift the step cover** to access the **gas spring**.



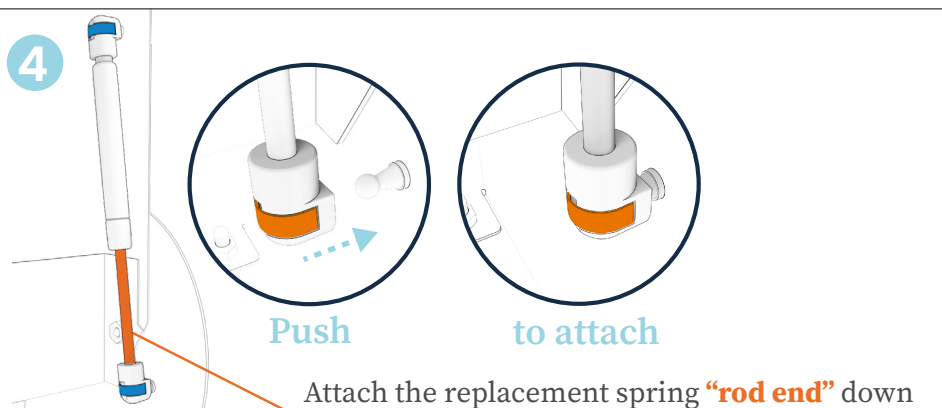
Use a small flathead screwdriver to **lift the clips on each end** of the gas spring, and pull the spring to remove.



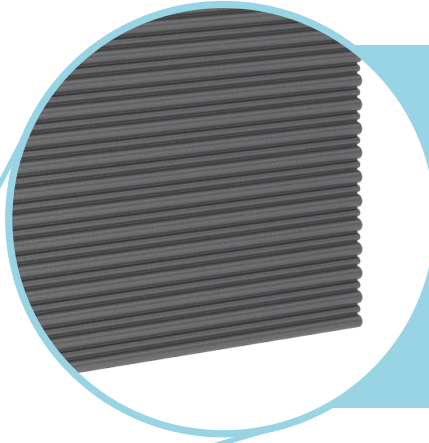
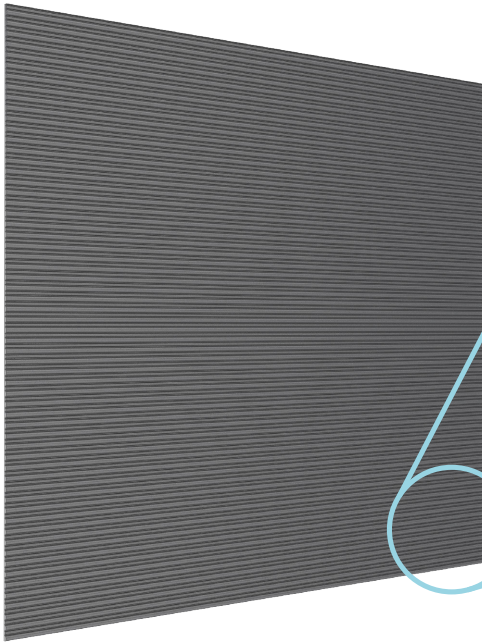
Attach the replacement spring "**rod end**" **down**.

Close the step cover **2** and insert the screws that were removed. **1**

Ensure that the step self-retracts.



Rubber Step Tread



The channels provide increased grip even when wet, ensuring a **safe handwashing experience** for your guests.

After 2 - 3 years

of use, the rubber step tread can begin to wear out.

Replace the rubber tread when it begins to show signs of wear, especially at the front edges of the step.



Remove the existing tread by simply pulling it off. Peel off the paper from the adhesive backing on the replacement tread and apply it to the step.

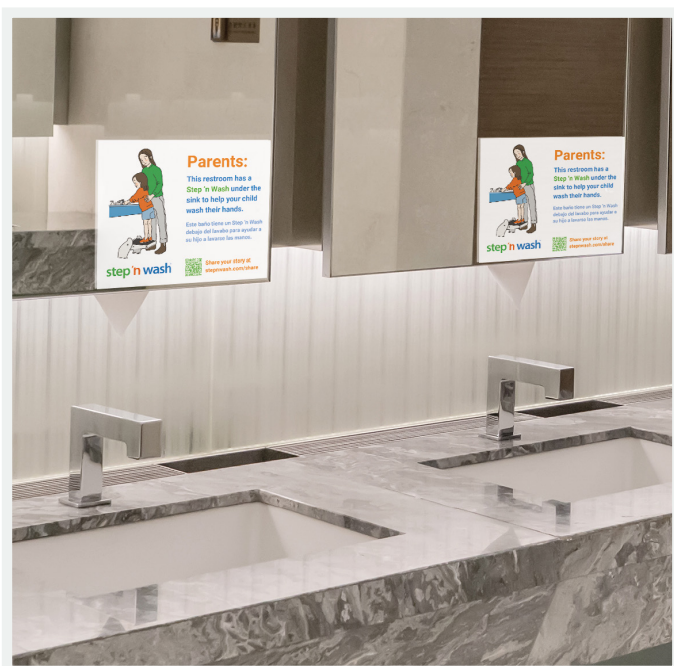
Care & Maintenance

Step 'n Wash



Product Label

If your product label is damaged, you can order a new one directly from Step 'n Wash



Mirror Sticker

If your mirror sticker is missing or damaged, you can order a new sticker directly from Step 'n Wash

