

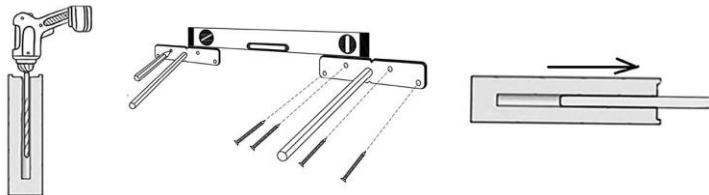
FLOATING SHELVES

INSTALLATION INSTRUCTIONS

PLEASE NOTE: Since we do not know where your studs are located, we are unable to pre-drill any holes for the hardware. Thank you!



- STEP 1 Mark a level line across the wall where the piece will be hung. *It is recommended that you mount brackets to at least 1 stud.*
- STEP 2 Mark where your studs are located on the wall.
- STEP 3 Prep your shelf by drilling 2 holes (1/2") and just deep enough to fit the bracket. We recommend adding a piece of tape to your drill bit so you know where to stop! *(This is not done ahead of time because we have no way of knowing where your studs will be located for your particular application.)*
- STEP 4 Screw bracket(s) into appropriate locations.
- STEP 5 Slide shelf/mantel over the brackets.
- STEP 6 Check for level and adjust accordingly.



Includes 2 Brackets with screws. Please use common sense! We recommend you contact a local professional for additional mounting help if you are not familiar with the needed tools!



Modern Timber Craft
401 E 4th St, Building 20
Bridgeport, Pennsylvania 19405

(866) 999-6635
info@moderntimbercraft.com
www.moderntimbercraft.com